

BOSS PRODUCTS  
A Division of Northern Star Industries, Inc.  
P.O. Box 787 Iron Mountain MI 49801-0787  
[www.bosspow.com](http://www.bosspow.com)

**2000 - 2006 TOYOTA TUNDRA  
SPORT DUTY UNDERCARRIAGE  
MOUNTING INSTRUCTIONS  
(PART NO. LTA05250)**

***DRIVEN TO BE THE BEST***

MSC05268-3

# **WARNING**

Many newer trucks are now equipped with air bags. DO NOT under any circumstances disable, remove or relocate any sensors or other components related to the operation of the air bags.

For recommended vehicle models refer to the Boss Snowplow Application Chart and Selection Guide.

To comply with Federal Regulations and to assure a safe vehicle, the Front Gross Axle Weight Rating (FGAWR), Rear Gross Axle Weight Rating (RGAWR), and the Gross Vehicle Weight Rating (GAWR) must not be exceeded at any time.

Due to the variety of equipment that can be installed on this vehicle, it is necessary to verify that the Front Gross Axle Weight Rating (FGAWR), Rear Gross Axle Weight Rating (RGAWR), and the Gross Vehicle Weight Rating (GAWR) are not exceeded at any time. This may require weighing the vehicle and adding ballast as necessary. It may also limit payload capacity of the vehicle. It is the operator's responsibility to verify that these ratings are not exceeded.

## **2000 - 2006 TOYOTA TUNDRA SPORT DUTY UNDERCARRIAGE MOUNTING INSTRUCTIONS**

The mounting procedure outlined below covers the 2000 - 2006 Toyota Tundra trucks. You will need to refer to the illustrations and familiarize yourself with each of the undercarriage components and their relative position to each other. Then proceed as follows:

1. Begin by removing the bolts holding the skid plate to the bottom of the bumper and the rear cross member. Remove the skid plate. Some vehicles are equipped with an additional skid plate that wraps up in front of the bumper. This skid plate must be removed also.
2. Remove the bolts connecting the tow hook, tie down brackets, and skid plate brackets (Refer to Figure 1) to the bottom of the frame. The bolts and tow hook will be used in the undercarriage installation.
3. Assemble Driver Side Push Beam Support Plate (62B) to the bottom of the driver side frame rail. Begin by installing the bolts removed in Step 2 into the two holes in the bottom of Driver Side Push Beam Support Plate (62B). Tighten these two bolts. Next, drill the inside and outside frame wall for the upper hole in Driver Side Push Beam Support Plate (62B). Install one ½"-13 X 4-1/2" Hex Head Bolt (D) and one ½"-13 Lock Nut (B) in the drilled hole. Tighten this bolt.
4. Repeat Step 3 on the passenger side frame rail. Include the tow hook over Passenger Side Push Beam Support Plate (62A). The skid plates, tie down brackets, and skid plate brackets (See Figure 1) will no longer be used but should be retained in case the undercarriage is ever removed.
5. Install Push Beam Assembly (62) between Push Beam Support Plates (62A & 62B) using eight ½"-13 X 1-1/2" Hex Head Bolts (A) and eight ½"-13 Lock Nuts (B). For Light Duty Plow applications, the center of the receiver hole in Push Beam Assembly (62) should be 14-1/2" from the ground. Leave hardware finger tight.
6. Assemble Angle Bracket (75) to the back of Push Beam Assembly (62) using four ½"-13 X 1-1/2" Hex Head Bolts (A) and four ½"-13 Lock Nuts (B). Leave hardware finger tight.

7. Assemble the rear portion of Angle Bracket (75) to the truck's cross member using two Nut Plates (101), two ½" Split Lock Washers (C) and two ½"-13 X 1-1/2" Hex Head Bolts (A). Nut Plates (101) must be inserted into the cross member through the large hole in the rear of the cross member.
8. Tighten all hardware beginning at the rear of Angle Bracket (75) and working forward.

Installation Notes:

- A. Use Headlight Adapter Kit MSC04599.
- B. Check for hood swing clearance with the plow attached to the truck. The grill is attached to the hood on the 2000 -2006 Toyota Tundra which can cause interference between the grill and the plow lights/light bar. If there is interference, move the light bar to the forward mounting position. See owner's manual for further details.

# 2000 - 2006 TOYOTA TUNDRA SPORT DUTY UNDERCARRIAGE INSTALLATION PROCEDURE

REF. NO.	DESCRIPTION	PART NO.	QTY.
62	Push Beam Assembly, Sport Duty	PBA05253	1
62A	Push Beam Support Plate, Passenger Side	PBA05255	1
62B	Push Beam Support Plate, Driver Side	PBA05254	1
75	Angle Bracket	LTA05260	1
101	Nut Plate	LTA05264	2
	FASTENER KIT, TUNDRA, 2000 - 2006	HDW05266	1
Includes:			
A	1/2" - 13 x 1- 1/2" Hex Head Bolt	HDW01728	14
B	1/2" - 13 Hex Head Lock Nut	HDW01748	14
C	1/2" Split Lock Washer	HDW01732	2
D	1/2" - 13 x 4-1/2" Hex Head Bolt	HDW01778	2

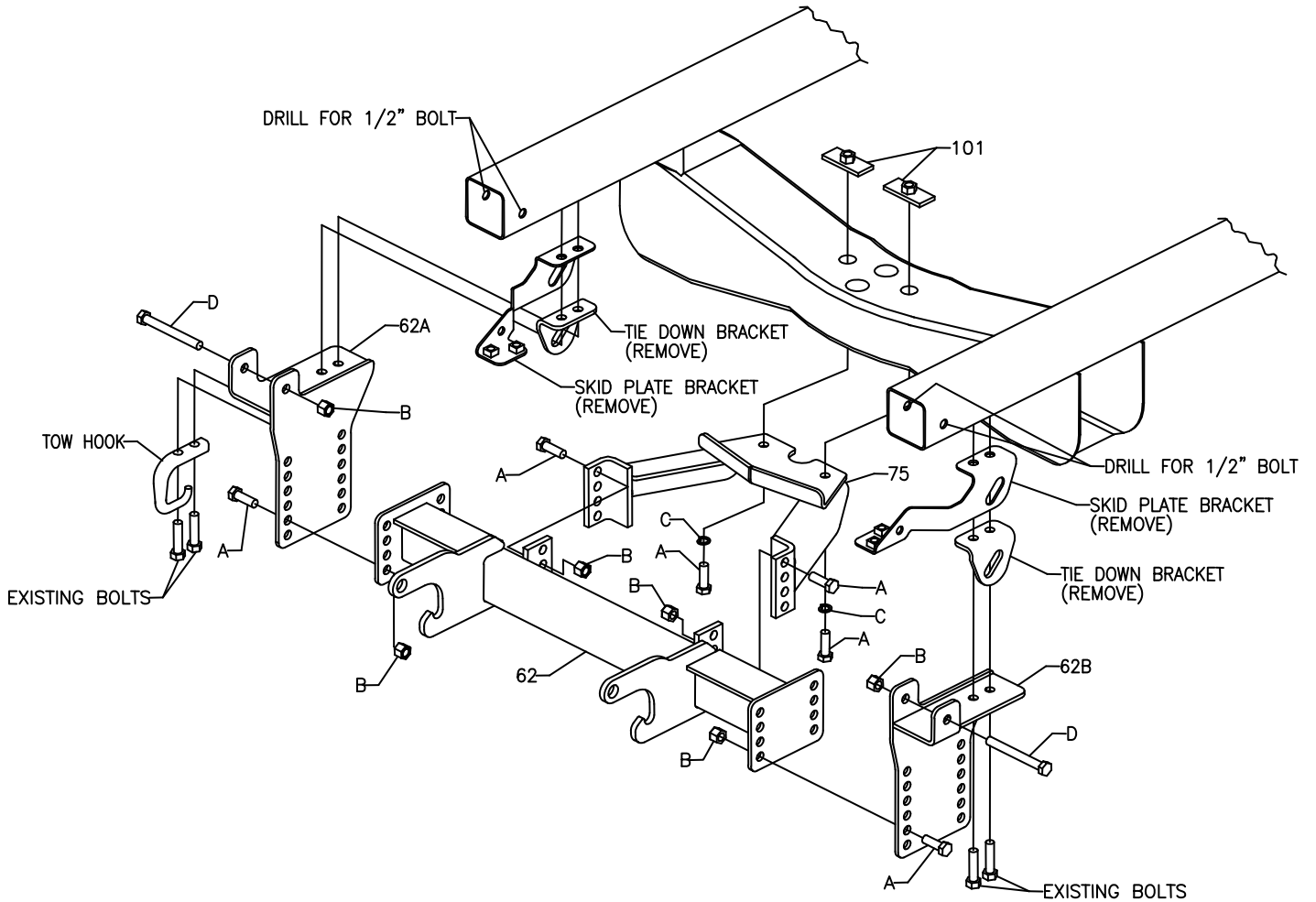


Figure 1

G10297

## RECOMMENDED PUSHBEAM HEIGHT

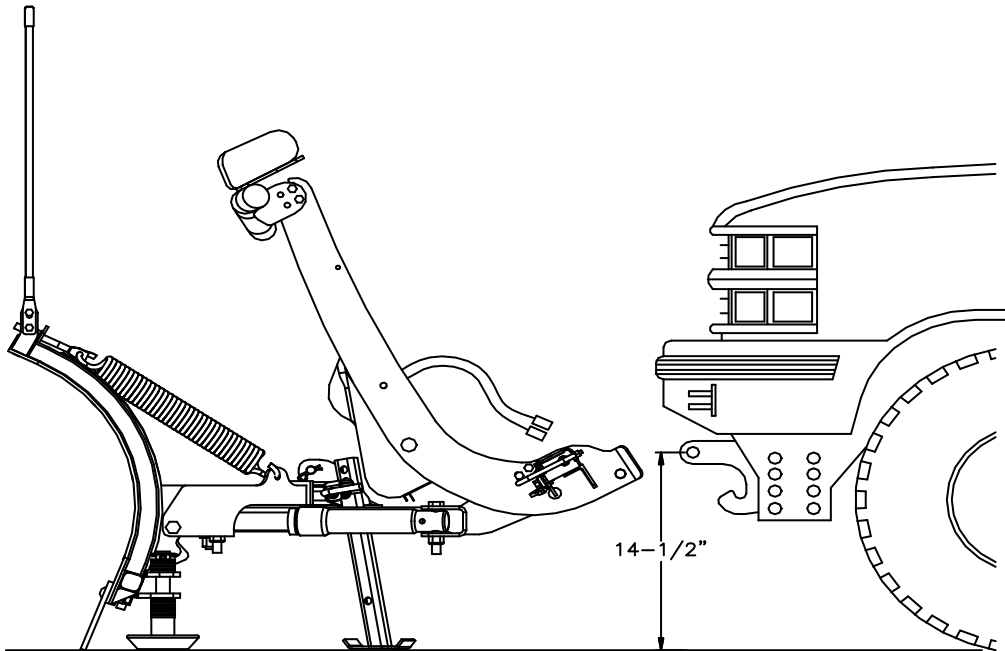


Figure 2

G10299

## GUIDE TO RECOMMENDED ASSEMBLY TORQUE



DIAMETER / PITCH	GRADE 5	GRADE 8	GRADE 8.8	GRADE 10.9
1/4-20	6	9		
5/16-18	14	19		
3/8-16	23	33		
7/16-14	38	53		
1/2-13	56	80		
9/16-12	82	116		
5/8-11	113	159		
3/4-10	201	283		
M10 X 1.25			36	
M10 X 1.5				49
M12 X 1.75				71
M14 X 2.0				80

ALL TORQUE VALUES ARE IN FOOT-POUNDS (FT.-LB.)

Figure 3

G10410

\* The torque values listed above are based on dry, coated bolts, variables such as oil, or other lubrications may appreciably alter these values and must be taken into consideration.

**NOTE:** IT IS IMPORTANT THAT ALL FASTENERS BE PROPERLY TORQUED TO ASSURE A SAFE OPERATING PLOW.