

GENERAL INFORMATION

CAUTION: Always disconnect battery before beginning installation.

DO NOT BURN holes or **WELD** vehicle frame. This may cause frame failure.

After first use, re-tighten all mounting bolt connections to specified torque. All mounting bolt connections to be checked periodically for tightness.

Locknuts are furnished **DO NOT** tighten bolts and nuts until installation is complete (unless otherwise specified), then be sure to tighten all attaching parts per specified torque chart.

NOTE: It is important that the Meyer harness, all wires from the Meyer light switch, and all other electrical wires be routed around hot or moving engine parts, and any sharp metal. Protection must be provided to guard against wire damage at these points. All excess or loose wires must be neatly secured using wire ties.




Check contents against the parts list to determine all are correct and included, and also to familiarize yourself with them.

SAFETY PRECAUTIONS should be used when **Hydraulic Unit is in OPERATION** and plow is in a **RAISED** position. **Lower plow to ground when vehicle is PARKED.**

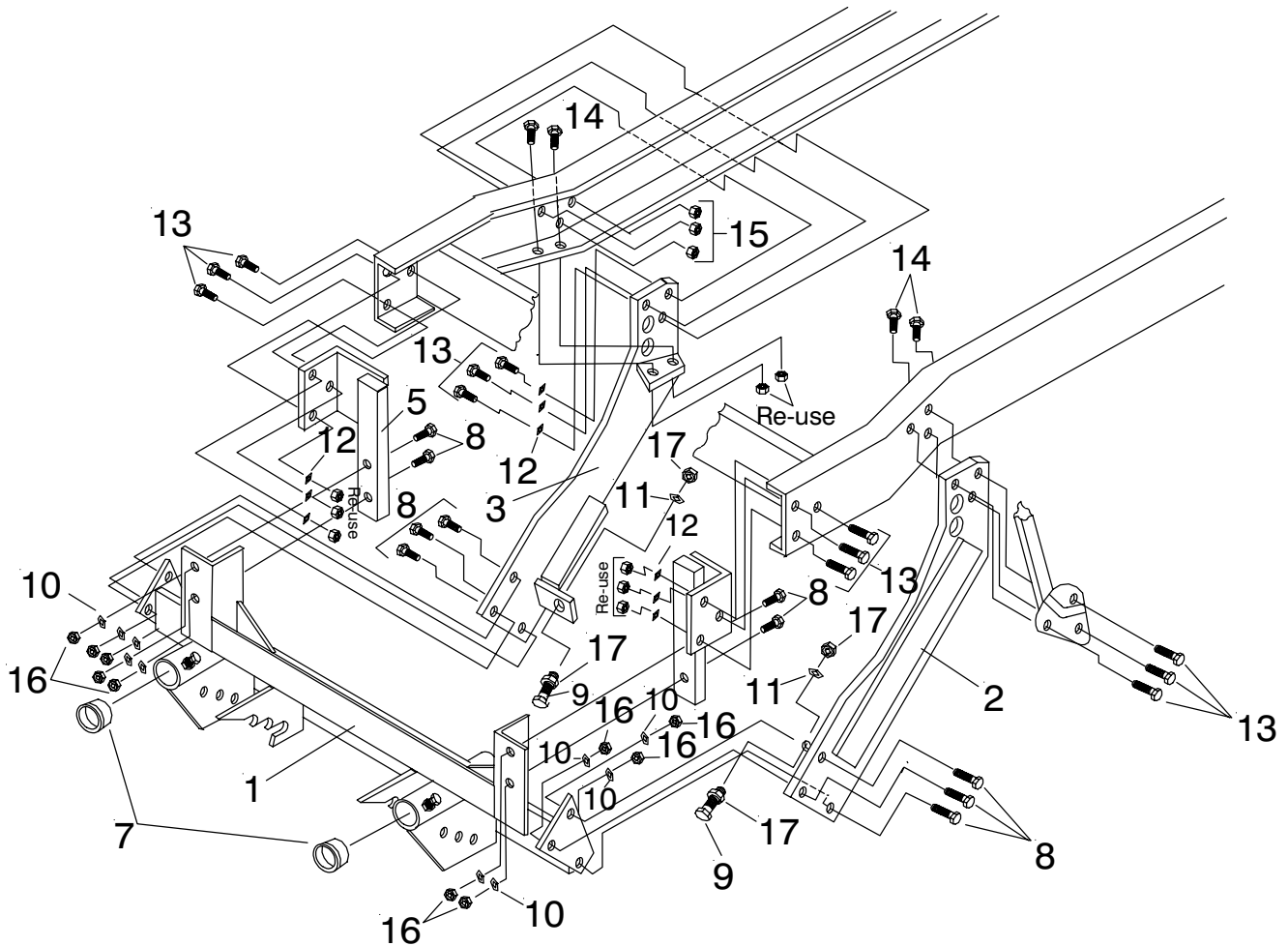
OVERHAUL and **SERVICE INFORMATION** are covered on separate instructions.

Follow these instructions explicitly. Warranty does not apply to a Meyer product which has been negligently or improperly assembled or installed.

TORQUE CHART FOOT LBS.

Bolt Nut Size	Gr. 	Gr. 	Gr. 
1/4 - 20	2	4 - 5	
5/16 - 18		9 - 11	
3/8 - 16		17 - 20	
7/16 - 14			26 - 29
1/2 - 13			42 - 46
5/8 - 11			64 - 72
3/4 - 10			127 - 141
			227 - 251
			60 - 66
			90 - 100
			179 - 198

Meyer Products assumes no responsibility for installations not made in accordance with these instructions.

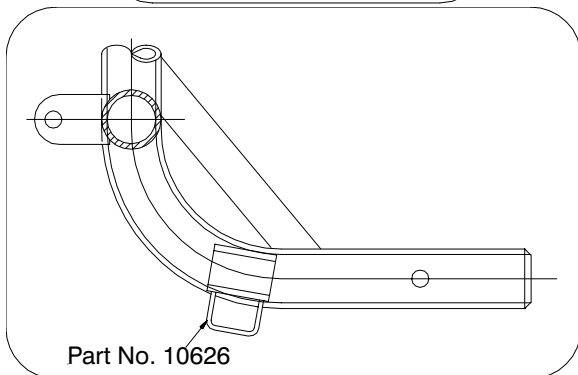
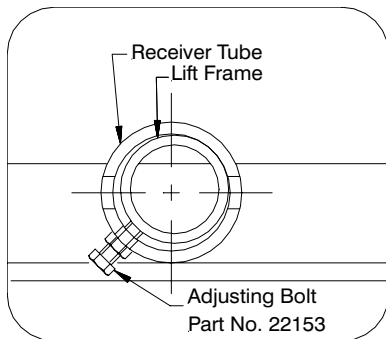


INSTALLATION INSTRUCTIONS

A. PRELIMINARY: Screw a 3/4"-10 jam nut (17) all the way on to each of the 3/4"-10 X 2-1/2" capscrews (9). Place each of the 3/4"-10 X 2-1/2" capscrew / jam nut assemblies through the hole in the lower front ear of the driver's side and passenger's side member (2),(3), with the heads of the capscrews (9) toward the front of the vehicle. Fasten with a 3/ 4" lockwasher (11) and 3/4"-10 jam nut (17) on each capscrew (9).

B. FRONT HANGERS: Remove and discard the three 10mm bolts holding each vehicle bumper bracket to the frame rails. Save the 10mm-1.25 nuts for later use. Place the driver's side front hanger (4) and the passenger's side front hanger (5) onto the inside surface of its respective frame rail. Attach using three 10mm -1.25 x 35mm Capscrews (13) and 3/8" flatwashers (12) through each front hanger, frame rail, and bumper bracket. Fasten using the original equipment 10mm - 1.25 nuts removed earlier.

C. DRIVER'S SIDE SIDE MEMBER: Tilt the vehicle cab forward and assemble a temporary cab prop to hold cab up and also to prevent it from tilting too far forward. Remove and discard the three 10mm bolts holding the original cab prop bracket to the drivers sideframe rail. Place a jack under the drivers side end of the radiator support cross member to hold it against the frame rail. Remove the two 12mm bolts and nuts holding the driver's side end of the radiator support cross member to the frame rail. Discard the 12mm bolts - save the 12mm-1.25 nuts for later use. Install the driver's side side member (2) onto the outside of the frame rail with the three small holes in the side member lined up with the three holes in the frame rail that the cab prop bracket bolts were removed from. Fasten the cab prop bracket and rear vertical section of the side member to the frame rail using 3 10mm-1.25 x 35mm capscrews (13) and 3/8" flatwashers (12). Place two 12mm-1.25 x 40mm capscrews (14) down through the holes in the bottom flange of the frame rail, radiator support cross member, and horizontal bolting section of the side member. Fasten using the original equipment 12mm-1.25 nuts removed previously. Remove the jack from under the radiator support cross member.



D. PASSENGER'S SIDE MEMBER: Place a jack under the passenger's side end of the radiator support cross member to hold it against the frame rail. Remove the two 12mm bolts and nuts holding the passenger's side end of the radiator support cross member to the frame rail. Discard the 12mm bolts -save the 12mm-1.25 nuts for later use. Install the passenger's side member (3) onto the outside of the frame rail with the three small holes in the rear section of the side member lined up with the three large holes in the vertical surface of the rail. Fasten using three 10mm-1.25 x 35mm capscrews (13), 3/ 8" flatwashers (12) and 10mm-1.25 nuts (15). Place two 12mm-1.25 x 40mm capscrews (14) down through the holes in the bottom flange of the frame rail, radiator support cross member, and horizontal bolting section of the side member. Fasten using original equipment 12mm-1.25 nuts removed earlier. Remove the jack from under the radiator support cross member.

E. MOUNTING FRAME: Place the upright hanger angles of the mounting frame (1) up in front of the vertical bars of the front hangers (4) & (5) with the lower end plates of the clevis frame on the mounting frame (1) between the two side members (2) & (3). Fasten the mounting frame (1) to the front hangers (4) & (5) using four 1/2"-13 x 1 1/2" capscrews (8), 1/2" lockwashers (10), and 1/2"-13 nuts (16). Line up the three holes in the front section of each side member (2) & (3) with the holes in the end plates of the clevis frame on the mounting frame (1). Fasten each of the side members (2) & (3) to the mounting frame (1) using three 1/2"-13 x 1-1/2" capscrews (8), 1/2" lockwashers (10), and 1/2"-13 nuts (16).

F. FASTENERS: Tighten all the 10mm, 12mm, and 1/2" fasteners installed into the side members (2) & (3), mounting frame (1), front hangers (3) & (4) and vehicle frame to the specified torques. Remove the temporary cab prop that was assembled earlier. Adjust the 3/4" capscrews (9) with the 3/4" jam nuts (17) so that the heads of the capscrews are tight against the clevis frame of the mounting frame. Lock the 3/4" capscrews (9) in place using the rear jam nuts (17).

G. LIFT FRAME: Clean paint and burrs from the outside tube ends of the lift frame and the inside surfaces of the receiver tubes of the front mounting frame (1). **SPECIAL NOTE:** Liberally coat the entire tube ends of the lift frame, the inside surfaces of the receiver tubes and threads of the slack adjusting bolts on the receiver tubes with chassis or anti-seize lubricant. Back off the slack adjusting bolts on the receiver tubes until they no longer protrude inside the tubes. Slide the lift frame into the receiver tubes of the front mounting frame (1) until the fastening holes line up. Tighten the slack adjusting bolts on the receiver tubes until the lift frame will just slide in and out of the receiver tubes. Secure the lift frame to the front mounting frame using 5/8" hinge pins and hairpin cotters

Note: Check stops part no. 10626 on Lift Frame for proper stacking clearance.

Meyer Products assumes no responsibility for installations not made in accordance with these instructions.