

VEHICLE INSTALLATION INSTRUCTIONS
 DODGE 4 X 4: 1994-2001 W1500
 DODGE 4 X 4: 1994-2002 W2500-3500

Hiniker Company
 58766 240th St.
 P.O. BOX 3407
 Mankato, MN 56002

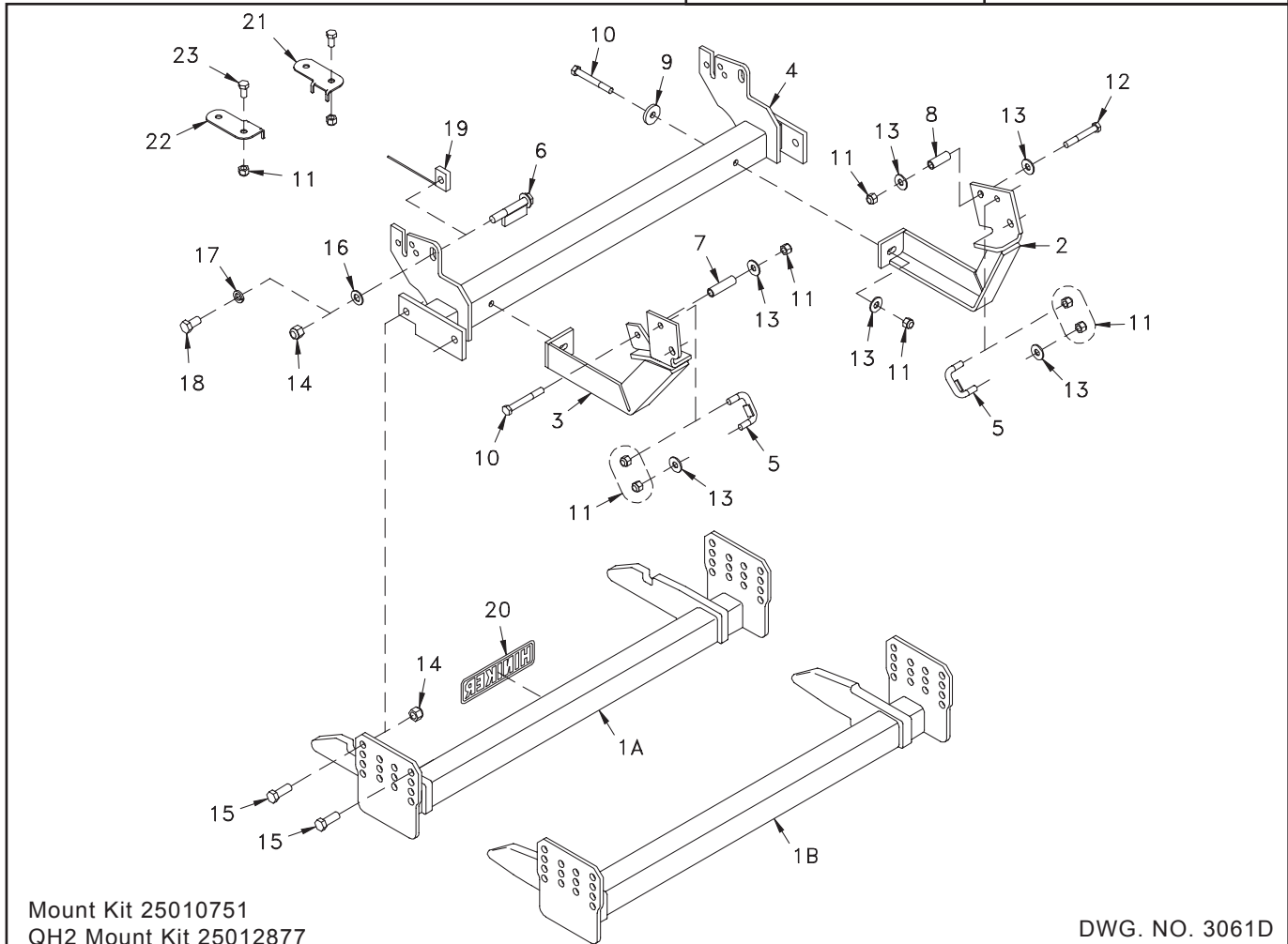
INSTRUCTION SHEET NO: 25013185 Rev. B

December 1, 2014



IMPORTANT: Read the Snowplow Operator's Manual before assembling this kit.

MINIMUM VEHICLE RECOMMENDATIONS	REAR BALLAST - 500 lbs. when plow is attached. Secure Weight Behind Rear Wheels.
MFR Snowplow Prep Package W2500 - AHD or AHH Package W3500 - AHD Package	



Mount Kit 25010751
 QH2 Mount Kit 25012877

DWG. NO. 3061D

REF. NO.	PART NUMBER	DESCRIPTION	QTY.	REF. NO.	PART NUMBER	DESCRIPTION	QTY.
1A	25010150	Prong Weldment	1	13	952-002-005	Flat Washer, 1/2 Inch	7
1B	25012946	Prong Weldment - QH2	1	14	060756	Lock Nut 5/8-11 Nylon Insert	6
2	25010202	RH Arm Weldment	1	15	950-001-132	Hex Head Cap Screw 5/8-11 x 1 3/4 Gr. 5	4
3	25010203	LH Arm Weldment	1	16	952-003-003	SAE Flat Washer, 5/8 Inch	2
4	25010752	Front Bracket Weldment	1	17	952-001-005	Lock Washer 5/8 Inch	2
5	25010194	U-Bolt Weldment	2	18	031-06302	Hex Head Cap Screw 5/8-11 x 1 1/4 Gr. 5	2
6	25010196	Bolt Weldment	2	19	25011033	Nut Bar Weldment	2
7	25010211	Long Spacer 2 11/16"	1	20	25010008	Hiniker Decal	1
8	25010212	Short Spacer 2"	1	21	25012254	RH Headlight Extension Bracket	1
9	952-004-059	Flat Washer 9/16 x 1 3/4 x 1/4 Thick	2	22	25012255	LH Headlight Extension Bracket	1
10	950-001-124	Hex Head Cap Screw 1/2-13 x 4 Gr. 5	3	23	950-001-231	Hex Head Cap Screw 1/2-13 x 1 Gr. 5	2
11	951-003-009	Lock Nut 1/2-13 Nylon Insert	10		25011164	Bolt Bag	1
12	950-001-142	Hex Head Cap Screw 1/2-13 x 3 1/2 Gr. 5	1				

All hardware should be tightened only enough to ensure safety during assembly. Fully tighten all hardware after entire assembly is completed.

GRADE 5 TYPE B & F LOCK NUT TORQUE VALUES

Size	Ft-lbs.	N-m
5/16"	13-18	17-25
3/8"	23-33	31-44
1/2"	58-82	79-112
5/8"	117-165	158-223

GRADE 5 BOLT TORQUE VALUES*

Size	Ft-lbs.	N-m
1/4"	8-12	11-16
3/8"	29-41	39-56
1/2"	73-103	99-140
5/8"	146-206	198-279

* applications without lock nuts

1. Remove three bumper mounting fasteners from the front of each vehicle rail.

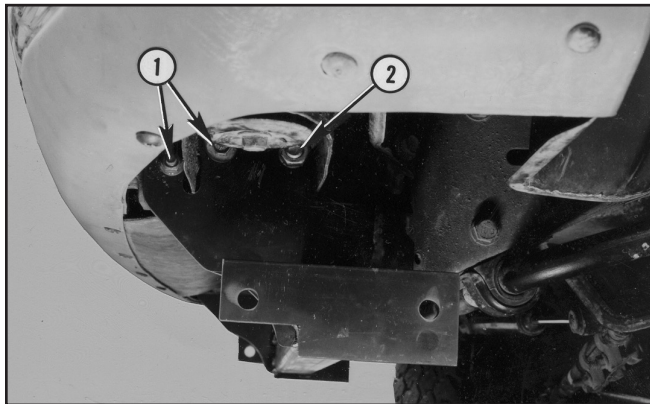


PHOTO NO. 3467

Mount front bracket to outside of vehicle frame by aligning two small holes in each side plate to lower bumper bracket holes at location 1 and reinstalling original bumper fasteners from inside of vehicle frame.

Fasten the bracket to the truck at location 2 by one of two procedures:

- On trucks built prior to 1998, install a welded bolt and block assembly through the long slot in the inner face of each frame member and through the hole in each bracket plate at location 2.

Secure the assembly with a 5/8 inch lock nut and flat washer.

- On trucks built after 1998, insert a nut bar into the opening in the truck frame below the bumper brace on each side of the vehicle. Hold the nut bar to match holes in the bracket plate and truck frame, then thread a 5/8 inch x 1 1/4 inch hex bolt with a lock washer and flat washer into the nut bar to secure the assembly.

2. Lift the LH arm weldment tight against the bottom of the truck frame to identify the three holes used to mount the weldment on the vehicle.



PHOTO NO. 3583

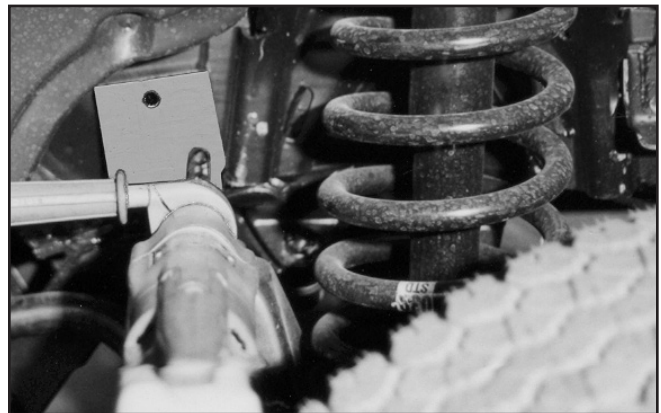


PHOTO NO. 3582

Some vehicles may require a 17/32 inch diameter hole drilled into the vehicle frame through the slot in the rear bracket of the LH arm. Hole centers should be the same as the U-bolt centers.

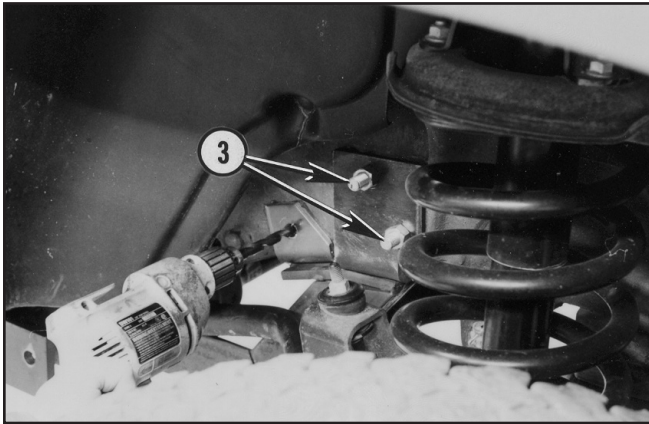


PHOTO NO. 3468

Loop a 1/2 inch U-bolt through holes in the vehicle frame at location 3. Carefully place rear holes of angle arm over U-bolt and start lock nuts.

Tighten nuts with angle arm tight against the bottom of the vehicle frame, and as far rearward as possible.

Drill a 17/32 inch diameter hole through the existing front hole in the angle arm. Ream the hole on the inner face of the vehicle rail to 25/32 inch diameter.

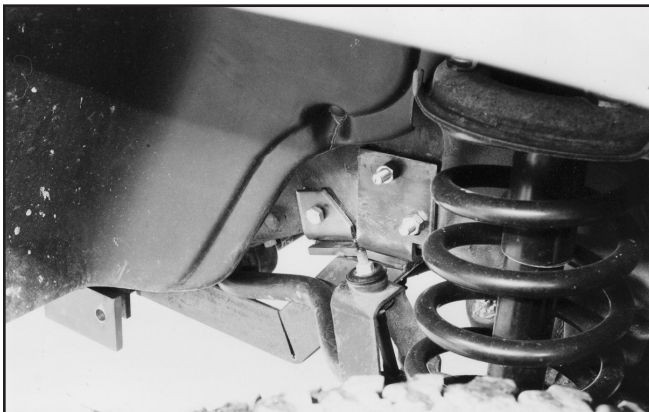


PHOTO NO. 3469

Insert a 1/2 inch x 4 inch hex bolt through the hole in the angle arm. Install the 2-11/16 inch long spacer onto the bolt from inside of the rail before fastening with a flat washer and lock nut.

3. Identify RH angle arm.



PHOTO NO. 3470

Ream existing hole in vehicle frame at location 4 to 25/32 inch diameter on both inner and outer face of the vehicle rail. Install U-bolt and carefully attach RH angle arm the same as on the LH side.

Insert a 1/2 inch x 3 1/2 inch hex bolt through the front hole in the angle arm. Install the 2 inch long spacer onto the bolt from inside of the rail before fastening with a flat washer and lock nut.



PHOTO NO. 3471

4. Fasten angle arms to front bracket with 1/2 inch x 4 inch hex bolts and thick 1/2 inch washers installed from the front, and 1/2 inch lock nuts and standard flat washers on the back.

5. Bolt prong weldment to brackets on vehicle frame with 5/8 inch x 1 3/4 inch hex bolts and 5/8 inch lock nuts.

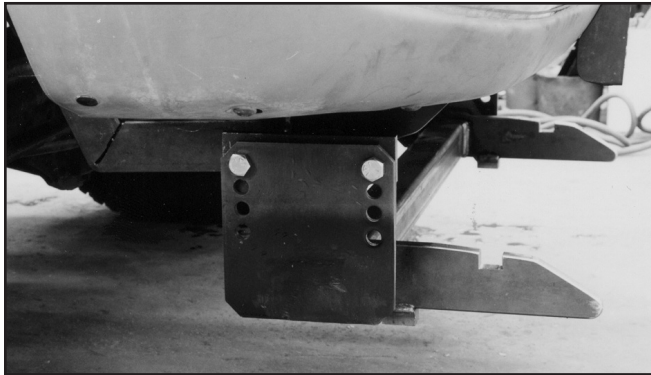


PHOTO NO. 3472

Bottom edges of the prongs should measure about 10 inches above the ground. Ideally, the prongs should lift the plow frame slightly when driving into the plow.

6. Tighten all fasteners to specified torque values.

Headlight Extension Brackets

Extension brackets are required to move the plow lights forward to avoid interference between the back of the headlights and the truck grill when opening the hood with the plow attached.

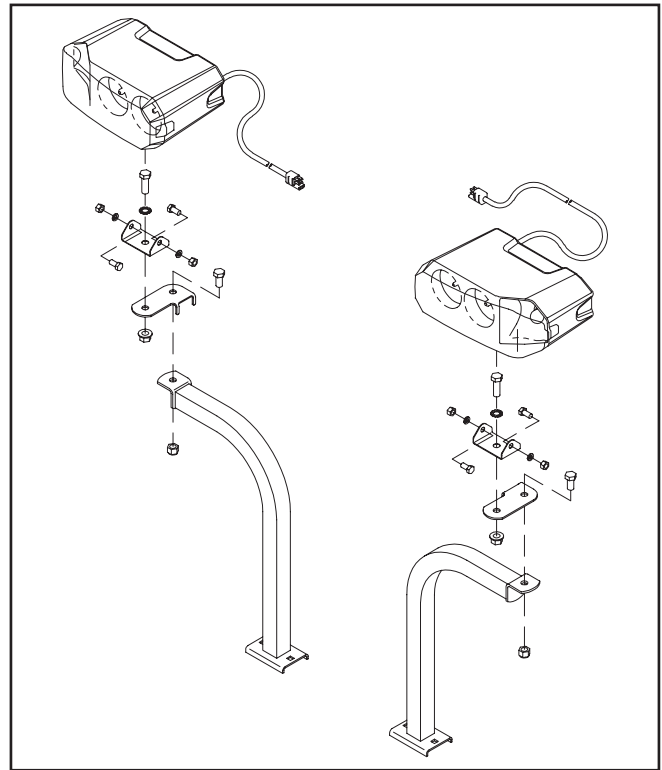


PHOTO NO. 6615A

1. Bolt the LH and RH extension brackets to the plow headlight brackets with 1/2 inch x 1 inch hex bolts and lock nuts.
2. Fasten the LH and RH headlights onto the brackets with hardware supplied with the lights.