

VEHICLE INSTALLATION INSTRUCTIONS  
DODGE DAKOTA 4 X 4: 2000 - 2004

Hiniker Company  
58766 240th St.  
P.O. Box 3407  
Mankato, MN 56002

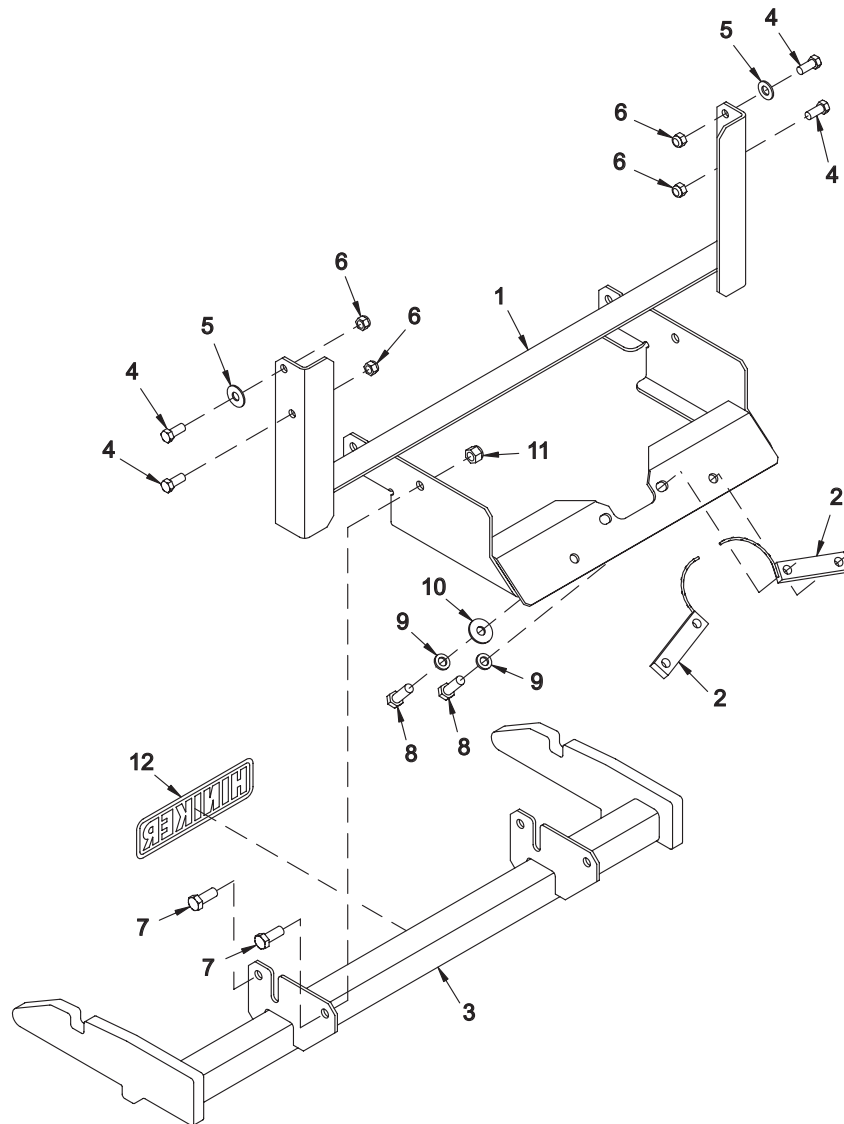
INSTRUCTION SHEET NO: 25011823

April 11, 2005



**IMPORTANT:** Read the Snowplow Operator's Manual before assembling this kit.

REAR BALLAST - 150 lbs. when plow is attached. Secure Weight Behind Rear Wheels.



Mount Kit No. 25011816

DWG NO. 5672

REF. NO.	PART NUMBER	DESCRIPTION	QTY.	REF. NO.	PART NUMBER	DESCRIPTION	QTY.
1	25011820	Frame Weldment	1	8	950-001-125	Hex Head Cap Screw 1/2-13 x 1 1/2 GR. 5	4
2	25011821	Nut Bar Weldment	2	9	952-001-004	Lock Washer, 1/2 Inch	4
3	25011822	Prong Weldment	1	10	952-002-005	Flat Washer, 1/2 Inch	2
4	950-001-109	Hex Head Cap Screw 7/16-14 x 1 GR. 5	4	11	951-003-009	Lock Nut 1/2-13 Nylon Insert	4
5	952-002-004	Flat Washer, 7/16 Inch	2	12	25010008	Hiniker Decal	1
6	951-003-003	Lock Nut 7/16-14 Nylon Insert	4		25011824	Bolt Bag	1
7	950-001-111	Hex Head Cap Screw 1/2-13 x 1 1/4 GR. 5	4				

All hardware should be tightened only enough to ensure safety during assembly. Fully tighten all hardware after entire assembly is completed.

**GRADE 5 TYPE B & F LOCK NUT TORQUES**

Size	Ft-lbs.	N-m
5/16"	13-18	17-25
3/8"	23-33	31-44
1/2"	58-82	79-112
5/8"	117-165	158-223

**GRADE 5 BOLT TORQUES\***

Size	Ft-lbs.	N-m
1/4"	8-12	11-16
3/8"	29-41	39-56
1/2"	73-103	99-140
5/8"	146-206	198-279

\* applications without lock nuts

1. Remove the plastic splash shield from the vehicle by prying loose seven retainers. Save the retainers for reinstallation.

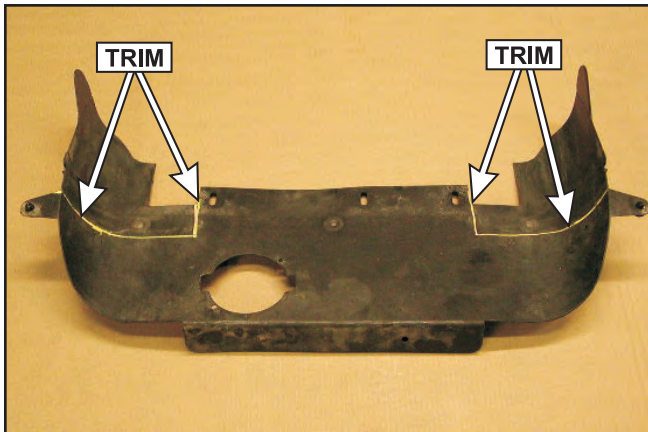


PHOTO NO. 1663

Trim the shield along the lines in the photo to provide clearance for mount kit components on the vehicle.

After trimming the shield, reassemble it to the truck using only the two rear retainers, shown by arrows in the following photo.



PHOTO NO. 8917

The front part of the shield must hang loosely for installation of the mount kit frame weldment.

2. Identify the two holes in the inner wall of each vehicle side rail that match the holes in the vertical members of the frame weldment.



PHOTO NO. 8911

Lift the frame weldment into place and loosely fasten to the vehicle rails with two 7/16 inch x 1 inch hex bolts and lock nuts and one 7/16 inch flat washer per side.

Push the rear portion of the frame weldment up to the vehicle cross member so that holes in the frame weldment match holes in the cross member. Use a drift punch to align holes, if necessary.



PHOTO NO. 8908

Insert two nut bar weldments into the vehicle cross member. Bend wire handles, if necessary, so that holes in the nut bars match holes in the frame weldment and cross member.



PHOTO NO. 8904

Secure the assembly with four 1/2 inch x 1 1/2 inch hex bolts and lock washers and two flat washers, as shown in Photo 8904.

Push the frame weldment up and back before fully tightening all the hardware. Bend the wire handles on the two nut bars to an out of the way position.

After the frame weldment is installed, reinstall the five remaining splash shield retainers.

3. Fasten the mount plates of the prong weldment to holes in the frame weldment with four 1/2 inch x 1 1/4 inch hex bolts and lock nuts.



PHOTO NO. 8900

Bottom edges of the prongs should measure about 10 inches above the ground when completed.

Fully tighten hardware to specified torques.