

Hiniker Company
 58766 240th St.
 P.O. Box 3407
 Mankato, MN 56002

VEHICLE INSTALLATION INSTRUCTIONS FOR:
 CHEV/GMC S10/SONOMA 4x4 1995-2003

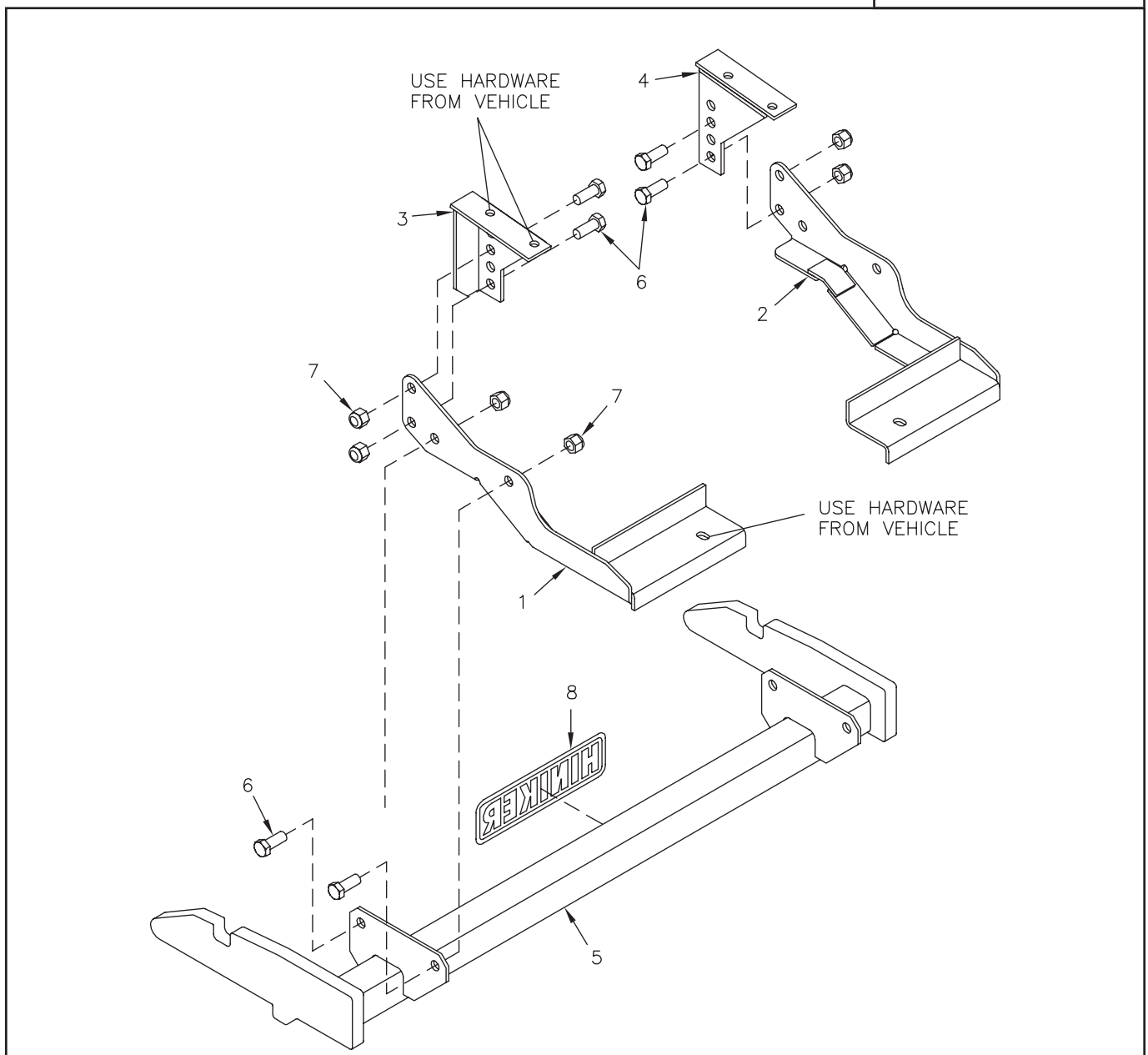
INSTRUCTION SHEET NO: 25012092 Rev A

SEPTEMBER 22, 2006



IMPORTANT: Read the Snowplow Operator's Manual before assembling this kit.

REAR BALLAST -
 150 lbs. when plow is attached.
 Secure Weight Behind Rear
 Wheels.



Mount Kit 25012022

DWG. NO. 5852A

REF. NO.	PART NUMBER	DESCRIPTION	QTY.	REF. NO.	PART NUMBER	DESCRIPTION	QTY.
1	25012197	LH Side Bracket Weldment	1	6	950-001-111	Hex Head Cap Screw 1/2-13 x 1 1/4 Gr. 5	8
2	25012198	RH Side Bracket Weldment	1	7	951-003-009	Lock Nut 1/2-13 Nylon Insert	8
3	25012199	LH Front Bracket Weldment	1	8	25010008	Hiniker Decal	1
4	25012200	RH Front Bracket Weldment	1		25012099	Bolt Bag	1
5	25012097	Prong Weldment	1				

All hardware should be tightened only enough to ensure safety during assembly. Fully tighten all hardware after entire assembly is completed.

GRADE 5 TYPE B & F LOCK NUT TORQUE VALUES

Size	Ft-lbs.	N-m
5/16"	13-18	17-25
3/8"	23-33	31-44
1/2"	58-82	79-112
5/8"	117-165	158-223

GRADE 5 BOLT TORQUE VALUES*

Size	Ft-lbs.	N-m
1/4"	8-12	11-16
3/8"	29-41	39-56
1/2"	73-103	99-140
5/8"	146-206	198-279

* applications without lock nuts

1. Identify the LH and RH front bracket weldments in the mount kit. Fasten the brackets to the bottom of their respective frame rails by removing tow hook bolts one at a time, then reassembling bolts through holes in the brackets.



PHOTO NO. DCP0751

Tighten hardware to draw brackets up against the bottom of the vehicle rails. Check that edges of the plastic splash shield on the vehicle are not pinched between the brackets and the truck frame.

2. Remove the two bolts that fasten the rear of the plastic splash shield to the vehicle. Save the bolts for reinstallation.

Slide the LH and RH side bracket weldments between the splash shield and the vehicle crossmember so that the rear hole in each bracket matches holes in the shield and crossmember.

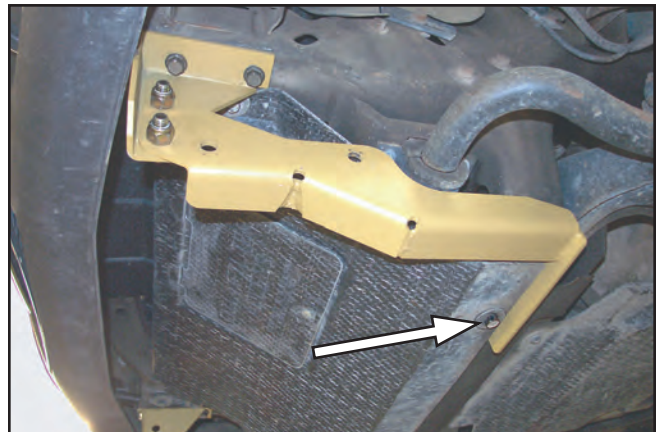


PHOTO NO. DCP0750

Loosely reinstall the two bolts through holes in the splash shield, rear brackets and vehicle crossmember to hold the brackets in place.

3. Bolt the two side brackets to the two front brackets with four 1/2 inch x 1 1/4 inch hex bolts and lock nuts.

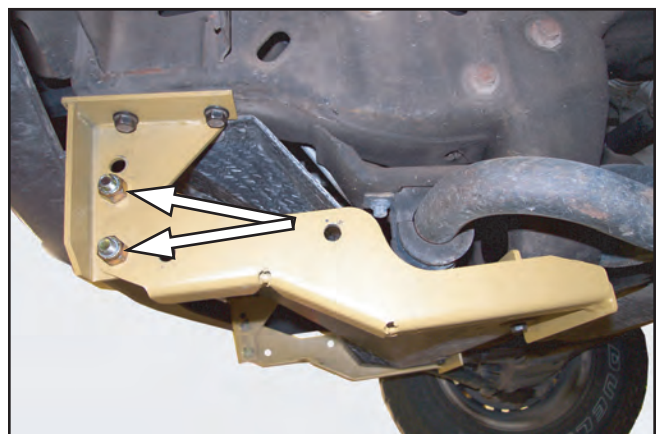
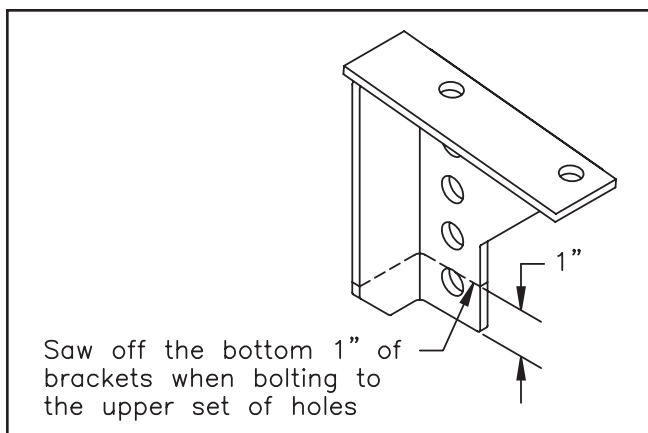


PHOTO NO. DCP0745



DWG. NO. 5912

On vehicles that require bolts to fasten through the upper set of holes in the front brackets, remove the brackets from the vehicle and saw off 1 inch from the bottom of the brackets to provide clearance for the plow frame cross tube when the plow is attached.

4. Fasten the mount plates of the prong weldment to holes in the LH and RH side brackets with four 1/2 inch x 1 1/4 inch hex bolts and lock nuts.



PHOTO NO. DCP0740

5. Push the LH and RH side brackets tight against the vehicle crossmember before fully tightening the two bolts through the plastic splash shield.

Fully tighten the remaining hardware to complete the assembly.

Bottom edges of the prongs should measure about 10 inches above the ground when complete.