

Hiniker Company  
 58766 240th St.  
 P.O. Box 3407  
 Mankato, MN 56002

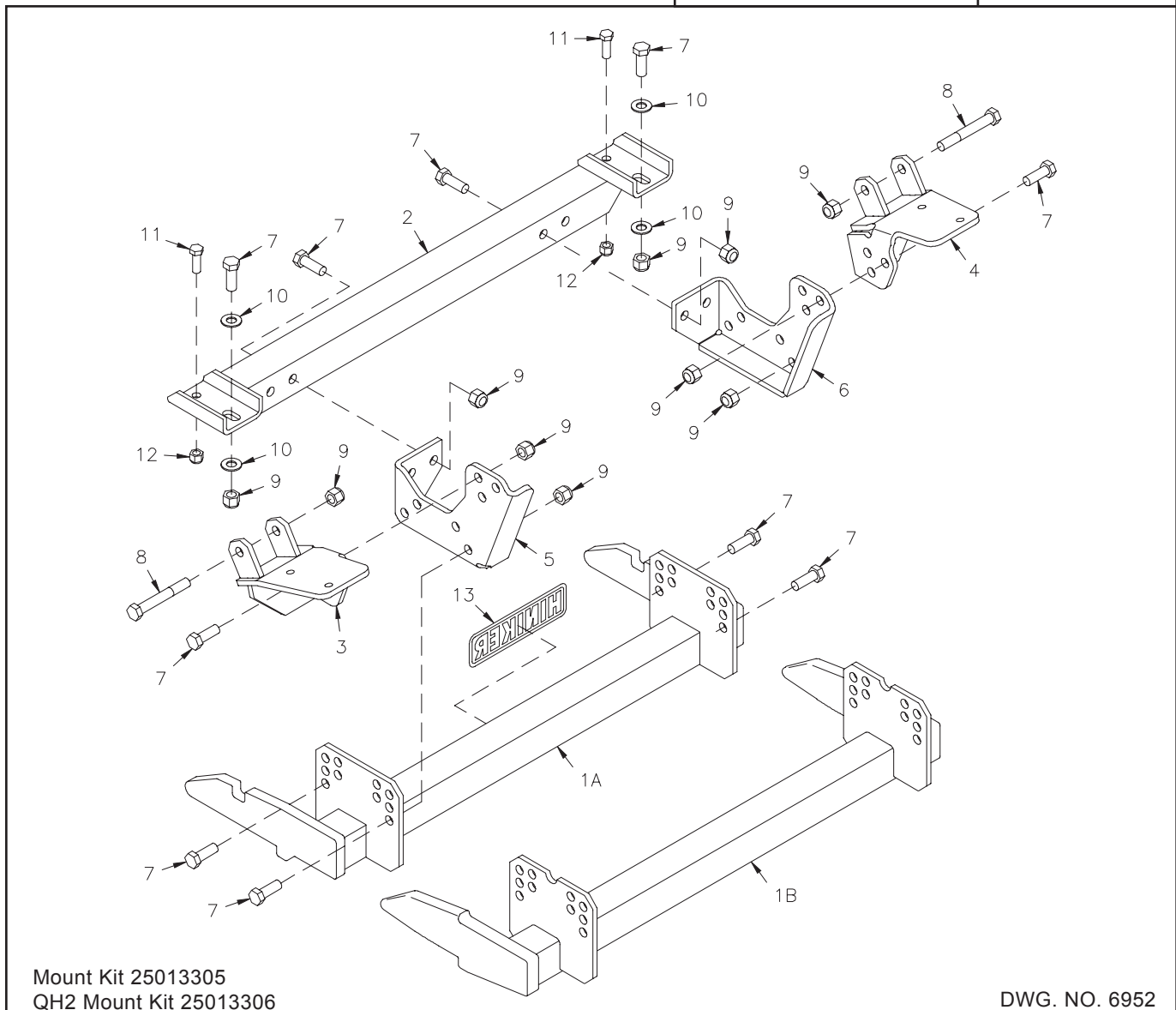
VEHICLE INSTALLATION INSTRUCTIONS:  
 DODGE RAM 4 X 4: 2008 & NEWER 4500, 5500

INSTRUCTION SHEET NO: 25013304 Rev. A

October 30, 2013

**IMPORTANT:** Read the Snowplow Operator's Manual before assembling this kit.

MINIMUM VEHICLE RECOMMENDATIONS	REAR BALLAST - As required to meet front GAWR.
- AHD Snowplow Prep Package	



Mount Kit 25013305  
 QH2 Mount Kit 25013306

DWG. NO. 6952

REF. NO.	PART NUMBER	DESCRIPTION	QTY.	REF. NO.	PART NUMBER	DESCRIPTION	QTY.
1A	25012253	Prong Weldment	1	8	061961	Hex Head Cap Screw 5/8-11 x 4 1/2 Gr. 8	2
1B	25012879	Prong Weldment - QH2	1	9	060756	Lock Nut 5/8-11 Nylon Insert	20
2	25012936	Cross Brace Weldment	1	10	952-004-070	Flat Washer, 5/8 Inch Hardened	4
3	25013307	LH Rear Bracket Weldment	1	11	950-001-125	Hex Head Cap Screw 1/2-13 x 1 1/2 Gr. 5	2
4	25013308	RH Rear Bracket Weldment	1	12	951-003-009	Lock Nut 1/2-13 Nylon Insert	2
5	25013309	LH Side Bracket	1	13	25010008	Hiniker Decal	1
6	25013310	RH Side Bracket	1	14	25012603	Bolt Bag	1
7	950-001-132	Hex Head Cap Screw 5/8-11 x 1 3/4 Gr. 5	18				

All hardware should be tightened only enough to ensure safety during assembly. Fully tighten all hardware after entire assembly is completed.

**GRADE 5 TYPE B & F LOCK NUT TORQUE VALUES**

Size	Ft-lbs.	N-m
5/16"	13-18	17-25
3/8"	23-33	31-44
1/2"	58-82	79-112
5/8"	117-165	158-223

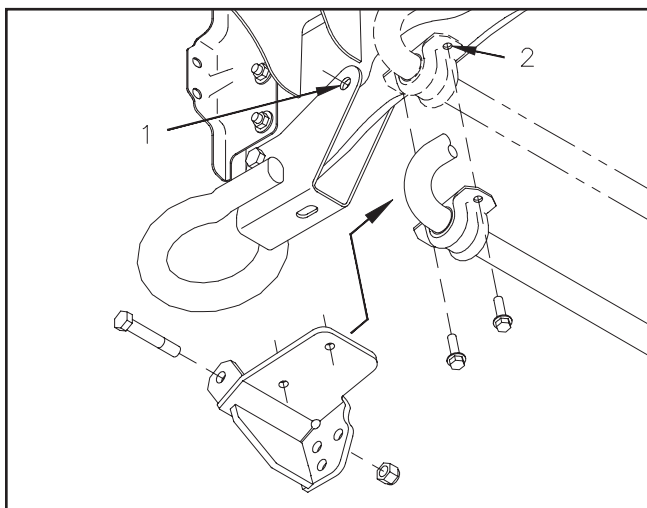
**GRADE 5 BOLT TORQUE VALUES\***

Size	Ft-lbs.	N-m
1/4"	8-12	11-16
3/8"	29-41	39-56
1/2"	73-103	99-140
5/8"	146-206	198-279

\* applications without lock nuts

1. Remove the lower plastic portion of the front truck bumper for clearance while assembling mount kit components onto the vehicle. Save all hardware for reinstallation later.

On both sides of the vehicle, remove the rear bolt, arrow 1, from the tow hook channel. Bolts and nuts will be replaced by longer bolts and nuts supplied in the kit.



DWG. NO. 6953

Likewise on both sides of the vehicle, remove two bolts, arrow 2, that fasten the torsion bar bushing to the bottom of the frame rails, then carefully rotate the torsion bar down.

Save the four bolts for reinstallation.

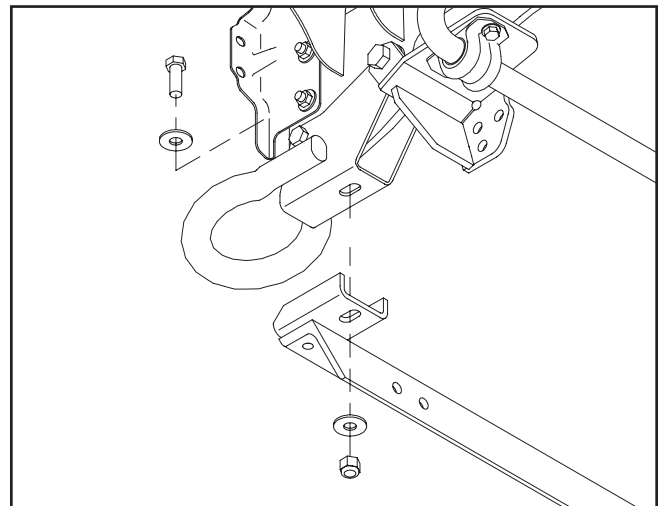
2. Identify the LH and RH rear brackets from the mount kit.

**Important: Take great care not to crosstread or strip threads in the vehicle frame!**

Install rear brackets to the truck frame with 5/8 inch x 4 1/2 inch hex bolts through holes at location 1. Loosely secure bolts with 5/8 inch lock nuts.

Swing the torsion bar up so that holes in the bushing mounts match holes in the rear brackets and truck frame, then fasten the assembly with the original bolts at location 2.

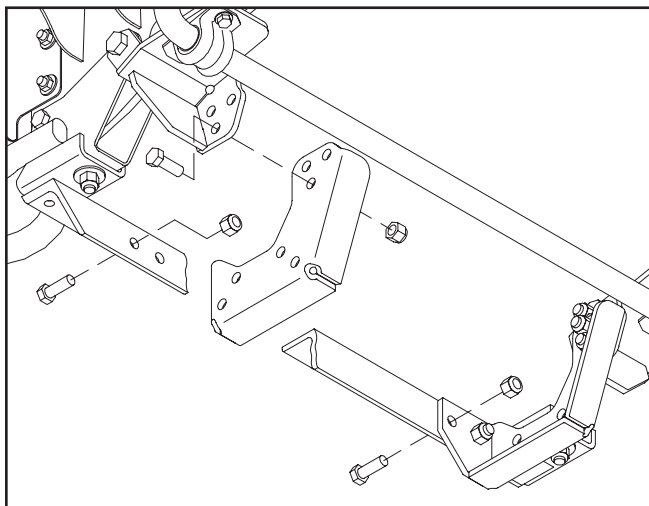
3. Lift the cross brace weldment to the bottom of the tow hook channels so that slotted holes align.



DWG NO. 6954

Place a flat washer onto two 5/8 inch x 1 3/4 inch hex bolts before inserting them from the top down through slotted holes. Thread lock nuts with flat washers onto the bolts.

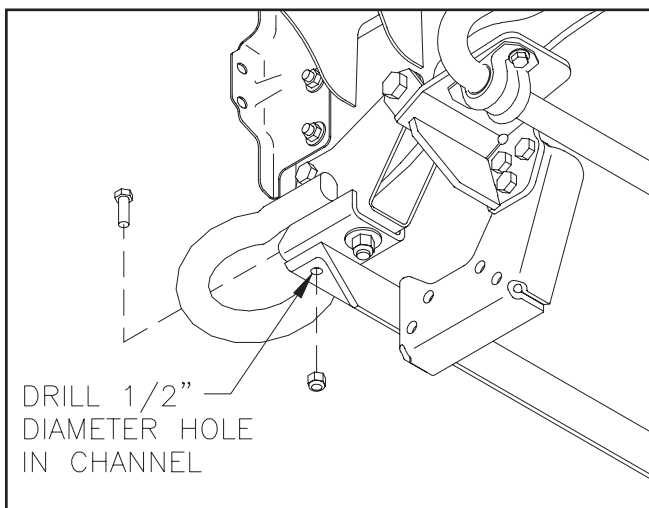
4. Fasten the LH and RH side brackets inside the rear brackets with three 5/8 inch x 1 3/4 inch hex bolts and lock nuts per side.



DWG NO. 6955

Fasten front holes of the side brackets to the cross brace weldment with two 5/8 inch x 1 3/4 inch hex bolts and lock nuts per side.

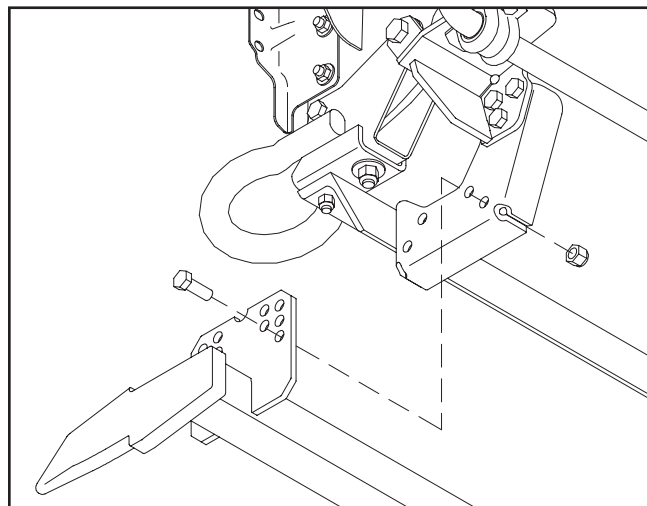
5. Drill 1/2 inch diameter holes into the bottom surface of both tow hook channels centered in the front holes of the cross brace weldment.



DWG NO. 6956

Insert 1/2 inch x 1 1/2 inch hex bolts through the drilled holes from the top down and secure with 1/2 inch lock nuts.

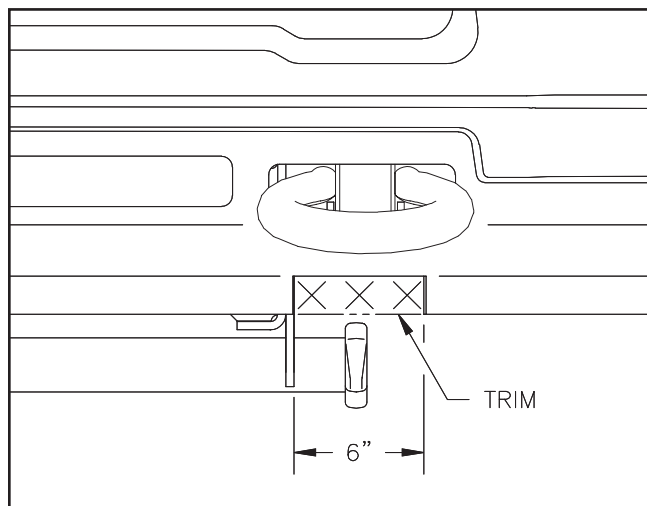
6. Fasten the mount plates of the prong weldment to holes in the LH and RH side brackets with eight 5/8 inch x 1 3/4 inch hex bolts and lock nuts.



DWG NO. 6957

Bottom edges of the prongs should measure about 10 inches above the ground. Ideally, the prongs should lift the plow frame slightly when driving into the plow.

7. Fully tighten all hardware to specified torque values.
8. Reinstall the lower bumper plastic onto the bottom of the truck bumper using the original fasteners.



DWG NO. 6958

Trim a notch about six inches wide outward from the prong plates to provide clearance for the receivers on the plow frame when attaching the plow to the truck. Remove only the least amount of material required for clearance to preserve the appearance of the truck.