

VEHICLE INSTALLATION INSTRUCTIONS FOR:  
 FORD 4x4: 2017 & NEWER SUPER DUTY  
 F250 - 350 - 450 - 550

Hiniker Company  
 58766 240th St.  
 P.O. Box 3407  
 Mankato, MN 56002

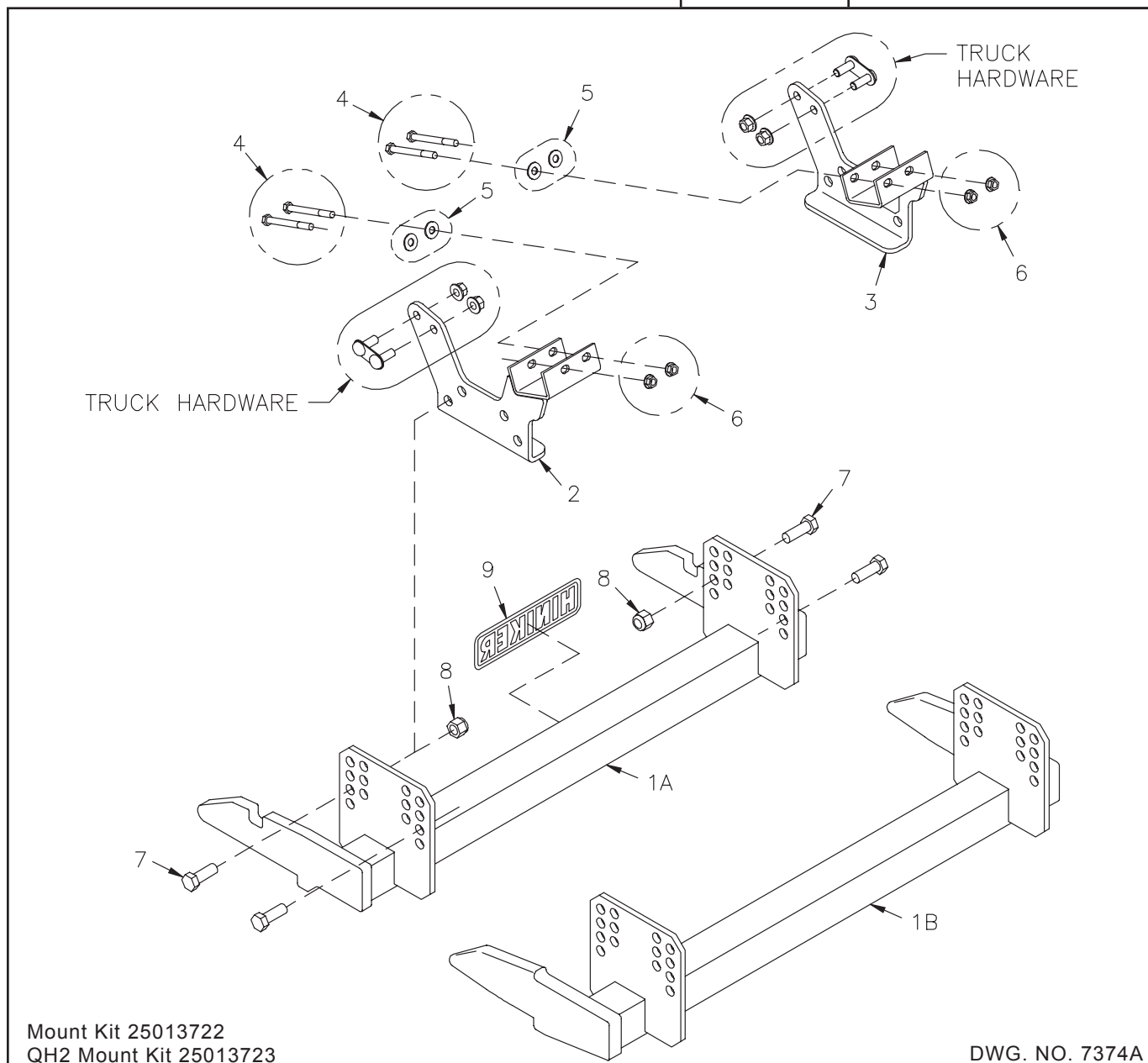
INSTRUCTION SHEET NO: 25013727 Rev. A

September 22, 2017



**IMPORTANT:** Read the Snowplow Operator's Manual before assembling this kit.

Minimum Vehicle Recommendations	
MFR Snowplow Prep Package	REAR BALLAST - 500 lbs. when plow is attached. Secure Weight Behind Rear Wheels.



Mount Kit 25013722  
 QH2 Mount Kit 25013723

DWG. NO. 7374A

REF. NO.	PART NUMBER	DESCRIPTION	QTY.	REF. NO.	PART NUMBER	DESCRIPTION	QTY.
1A	25013277	Prong Weldment	1	6	951-005-003	Lock Nut 3/8-16 Mac Lock	4
1B	25013276	Prong Weldment - QH2	1	7	950-001-132	Hex Head Cap Screw 5/8-11 x 1 3/4 Gr. 5	8
2	25013724	LH Bracket Weldment	1	8	060756	Lock Nut 5/8-11 Nylon Insert	8
3	25013725	RH Bracket Weldment	1	9	25010008	Hiniker Decal	1
4	950-001-014	Hex Head Cap Screw 3/8-16 x 3 3/4 Gr. 8	4		25013728	Bolt Bag	1
5	952-002-003	Flat Washer, 3/8 Inch	4				

All hardware should be tightened only enough to ensure safety during assembly. Fully tighten all hardware after entire assembly is completed.

**GRADE 5 TYPE B & F LOCK NUT  
TORQUE VALUES**

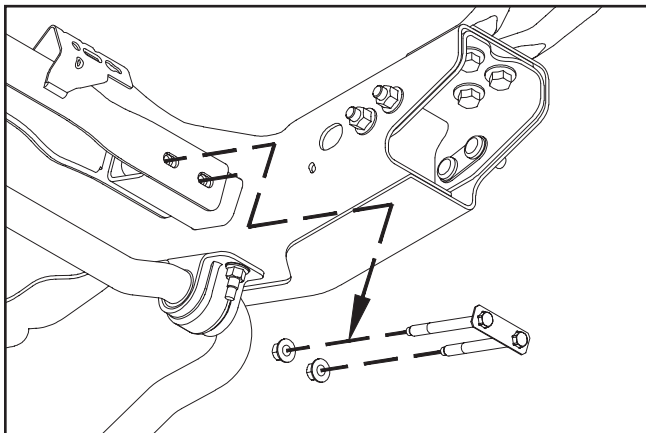
Size	Ft-lbs.	N-m
5/16"	13-18	17-25
3/8"	23-33	31-44
1/2"	58-82	79-112
5/8"	117-165	158-223

**GRADE 5 BOLT TORQUE VALUES\***

Size	Ft-lbs.	N-m
1/4"	8-12	11-16
3/8"	29-41	39-56
1/2"	73-103	99-140
5/8"	146-206	198-279

\* Applications without lock nuts.

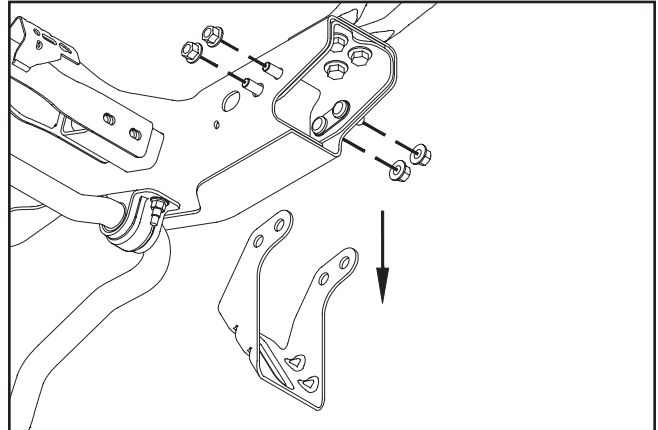
1. Unthread bolt assemblies from both ends of the truck frame cross member. Hardware will be replaced by hardware supplied in the mount kit, and should be returned to the vehicle owner.



DWG NO. 7375

Unbolt channel brackets from the front of each frame rail, taking care to prevent bolt assemblies from falling into the frame.

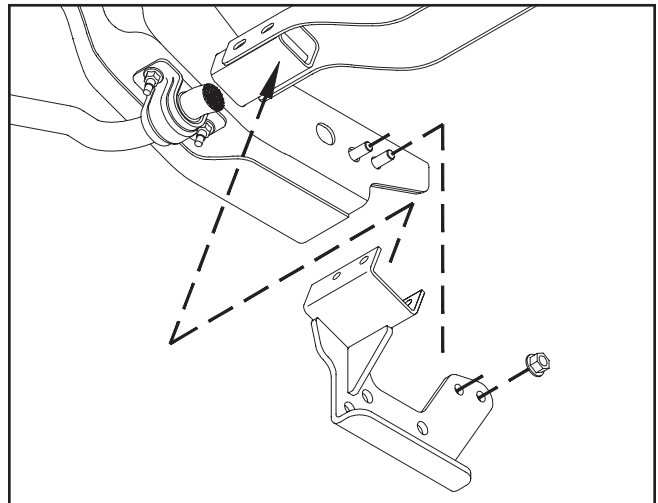
Return channels to the vehicle owner for reinstallation if the plow mount is removed in the future.



DWG NO. 7376

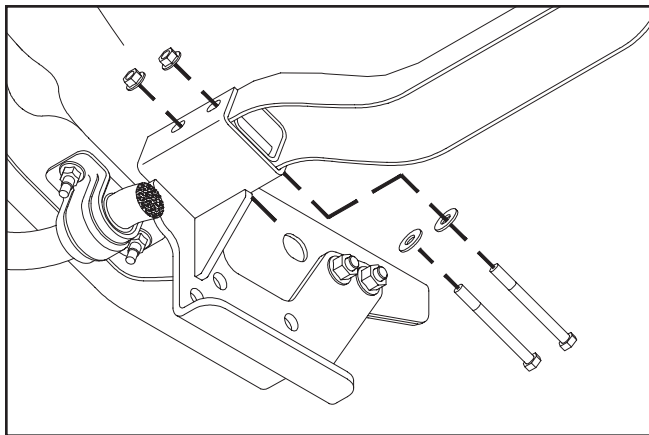
Reinstall nuts onto the two bolts extending through the outer wall of the rails.

2. Carefully lift the LH and RH mount brackets onto bolts extending through the inner wall of the rails, then thread nuts back onto bolts.



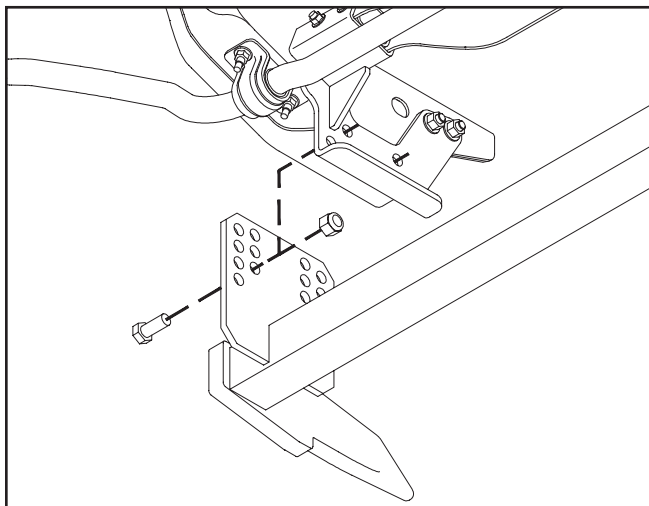
DWG NO. 7377

Fasten rear bracket channels to the vehicle cross member with two 3/8 inch x 3 3/4 inch hex bolts, flat washers and lock nuts supplied with the mount kit.



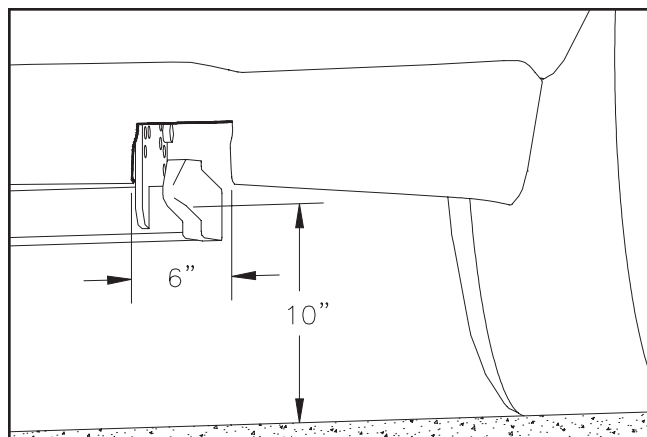
DWG NO. 7378A

3. Fasten the mount plates of the prong weldment to the LH and RH brackets with four 5/8 inch x 1 3/4 inch hex bolts and lock nuts per side.



DWG NO. 7379

The bottom edges of the prongs should measure about 10 inches above the ground.



DWG NO. 7380

- Notch the bottom edge of the front bumper plastic around the two prongs to provide clearance for the receivers on the plow frame when attaching the plow to the truck. Remove only the least amount of material required for clearance to preserve the appearance of the truck.
4. Fully tighten all hardware to specified torque values.