

BOSS PRODUCTS
A Division of Northern Star Industries, Inc.
P.O. Box 787 Iron Mountain MI 49801-0787
www.bosspow.com

**2008 & NEWER FORD F450 & F550
RT3 10' PLOW UNDERCARRIAGE
MOUNTING INSTRUCTIONS
(PART NO. LTA09070B)**

WARNING

Many newer trucks are now equipped with air bags. DO NOT under any circumstances disable, remove or relocate any sensors or other components related to the operation of the air bags.

For recommended vehicle models refer to the Boss Snowplow Application Chart and Selection Guide.

To comply with Federal Regulations and to assure a safe vehicle, the Front Gross Axle Weight Rating (FGAWR), Rear Gross Axle Weight Rating (RGAWR), and the Gross Vehicle Weight Rating (GAWR) must not be exceeded at any time.

Due to the variety of equipment that can be installed on this vehicle, it is necessary to verify that the Front Gross Axle Weight Rating (FGAWR), Rear Gross Axle Weight Rating (RGAWR), and the Gross Vehicle Weight Rating (GAWR) are not exceeded at any time. This may require weighing the vehicle and adding ballast as necessary. It may also limit payload capacity of the vehicle. It is the operator's responsibility to verify that these ratings are not exceeded.

2008 & NEWER FORD F450 & F550 RT3 10' PLOW UNDERCARRIAGE MOUNTING INSTRUCTIONS

The mounting procedure outlined below covers 2008 & Newer FORD F450 & F550 trucks. You will need to refer to the illustrations and familiarize yourself with each of the undercarriage components and their relative position to each other. Determine the model year and engine type of your truck, then proceed as follows:

1. Remove the truck Bumper by removing the two Bumper Stabilizer Bolts at the far ends of the Bumper and the four main Bumper Bolts located on the ends of the truck Frame Rails.
2. Remove Charge Air Cooler Hose (2008-2010 Diesel engines only) or Transmission Oil Cooler (2011 & Newer Diesel engines only).

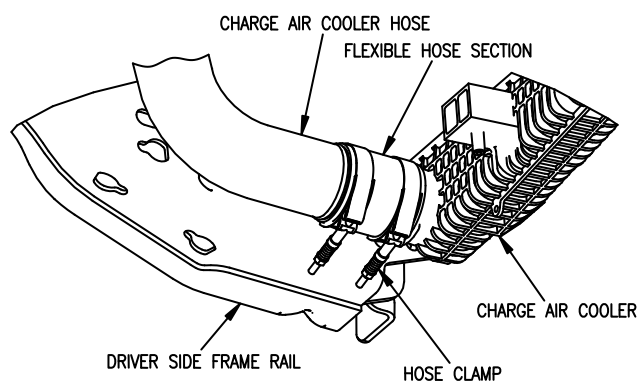


Figure 1. 2008-2010 Diesel engines only G10615

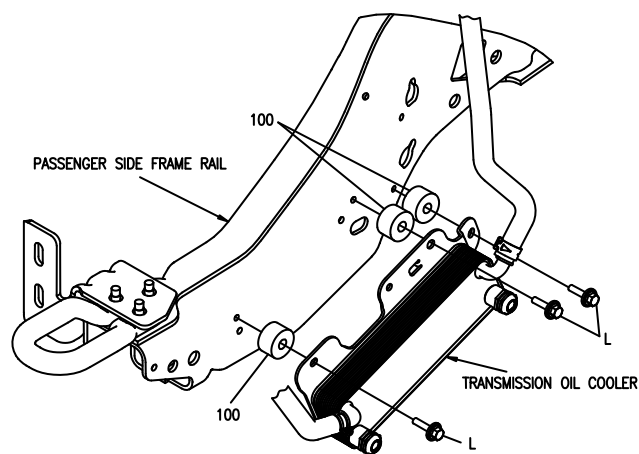


Figure 2. 2011 & Newer Diesel engines only G10616

3. Remove Front-To-Front Compatibility Brackets (if equipped).

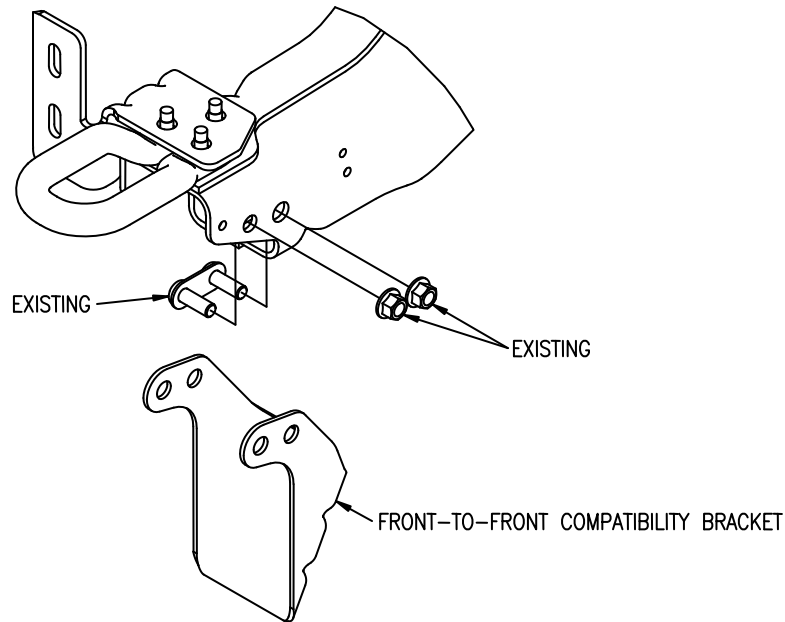


Figure 3. Front-to-Front Compatibility Bracket Removal

G10617

4. Remove the Driver Side Stabilizer Bar Mounting Bracket. Remove the existing Bolts from the Frame Rail.
5. Insert one 7/16" Bolt Plate (99) into the Frame Rail of the truck. Position 7/16" Bolt Plate (99) so that the studs are protruding through the bottom of the Frame Rail in the same location as the Bolts that were removed in the previous step.
6. Place the Stabilizer Bar Rubber Bushing in the cradle section of Driver Side Push Beam Support Plate (62B). Place Driver Side Push Beam Support Plate (62B) against Frame bottom aligned with the protruding studs of 7/16" Bolt Plate (99).
7. Place one 7/16" Nylon Lock Nut (F) on each stud of 7/16" Bolt Plate (99). Fasteners should only be finger tight.
8. Place one 1/2"-13 X 1-1/4" Hex Head Bolt (A) and one 1/2"-13 Nylon Lock Nut (G) in the front inboard side bolt hole of Driver Side Push Beam Support Plate (62B) and the existing hole in the truck Frame Rail. Fasteners should only be finger tight.
9. Place one 1/2"-13 X 2" Hex Head Bolt (C) and one 1/2"-13 Nylon Lock Nut (G) in the front outboard side bolt holes of the Driver Side Push Beam Support Plate (62B) and the existing hole in the truck Frame Rail. Fasteners should only be finger tight.
10. Place one 5/8"-11 X 1-1/2" Hex Head Bolt (D) and one 5/8"-11 Nylon Lock Nut (J) in the rear inboard side bolt hole of Driver Side Push Beam Support Plate (62B) and the existing hole in the truck Frame Rail. Fasteners should only be finger tight.
11. Place one 5/8"-11 X 2" Hex Head Bolt (E), one 5/8" Flat Washer (K), and one 5/8"-11 Nylon Lock Nut (J) in the rear outboard side bolt hole of Driver Side Push Beam Support Plate (62B) and the existing hole in the truck Frame Rail. Fasteners should only be finger tight.
12. Place 5/8"-11 X 2" Hex Head Bolt (E), one 5/8" Flat Washer (K), and one 5/8"-11 Nylon Lock Nut (J) in the rear J-Hook hole of Driver Side Push Beam Support Plate (62B) and the existing slotted hole in the

truck Frame Rail. Fasteners should only be finger tight.

13. Remount Charge Air Cooler Hose to Charge Air Cooler (2008-2010 Diesel engines only) or remount the Transmission Oil Cooler using three Oil Cooler Spacers (100) and three M08 X 40MM Bolts (L) (2011 & Newer Diesel engines only). See Figures 1 & 2.
14. Repeat steps 4-13 on the passenger side.
15. Install Push Beam (62) between Push Beam Support Plates (62A & 62B) using eight 1/2"-13 X 1-1/2" Hex Head Bolts (B) and eight 1/2"-13 Top Lock Nuts (H). Fasteners should only be finger tight. Push Beam (62) should be mounted at a height of 16-1/2" from the ground to the center of the hook hole.
16. Tighten all fasteners, starting with the Stabilizer Bar Mounting Bracket nuts. Reference the Assembly Torque Chart, located within this manual, for the proper torque value for each fastener.

Note: Re-torque all fasteners after 2 hours of snowplowing.

17. Remove or trim the plastic bumper valance as necessary to allow enough room for the hooks of Push Beam (62) and the snowplow coupler to engage. Trucks equipped with a 2" tall plastic bumper valance do not require removal or trimming of the valance.

Note: All original equipment removed from the truck must be remounted if the snowplow undercarriage is removed from the truck.

2008 & NEWER FORD F450 & F550 RT3 10' PLOW UNDERCARRIAGE MOUNTING INSTRUCTIONS

REF. NO.	DESCRIPTION	PART NO.	QTY.
62	Push Beam Assembly	PBA09071	1
62A	Push Beam Support Plate (RH)	PBA09073	1
62B	Push Beam Support Plate (LH)	PBA09072	1
99	7/16" Bolt Plate	PBA09087	2
100	Oil Cooler Spacer	PBA09099	3
	FASTENER KIT, FORD, 2008 & NEWER	HDW09083	
Includes:			
A	1/2"-13 X 1-1/4" Hex Head Bolt	HDW09090	2
B	1/2"-13 X 1-1/2" Hex Head Bolt	HDW01728	8
C	1/2"-13 X 2" Hex Head Bolt	HDW01755	2
D	5/8"-11 X 1-1/2" Hex Head Bolt	HDW01727	2
E	5/8"-11 X 2" Hex Head Bolt	HDW01731	4
F	7/16"-14 Nylon Lock Nut	HDW04842	4
G	1/2"-13 Nylon Lock Nut	HDW01748	4
H	1/2"-13 Top Lock Nut	HDW05597	8
J	5/8"-11 Nylon Lock Nut	HDW05619	6
K	5/8" Flat Washer	HDW01726	4
L	M08 X 40MM Washer Head Bolt	HDW09098	3

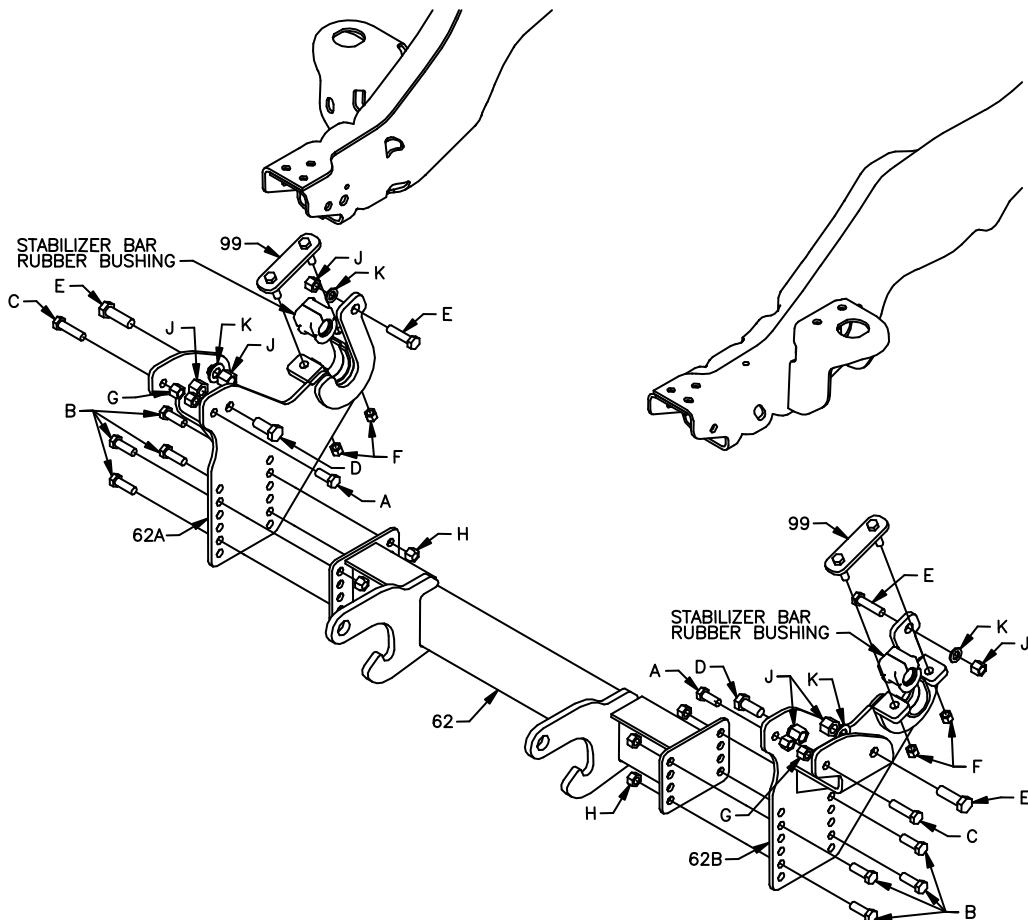


Figure 4.

Headlight Adapter Installation:

9008 (H13) replaceable bulbs require Headlight Adapter **MSC09993** (includes Headlight Adapter MSC08839 & Turn Signal Relay Kit MSC09991).

H6054 (2B) sealed beam headlights require Headlight Adapter **MSC04599** and Turn Signal Relay kit **MSC09991**.

2008-2010 Model Year Truck Headlight Access:

To access the truck headlight bulbs to install Headlight Adapters, lift the truck hood. The truck grille will lift with the hood allowing access to the vehicle headlight bulbs.

2011 & Newer Model Year Truck Headlight Access:

To access the truck headlight bulbs to install Headlight Adapters, refer to the truck's Owner's Manual for Headlight Bulb Replacement.

RECOMMENDED PUSHBEAM HEIGHT

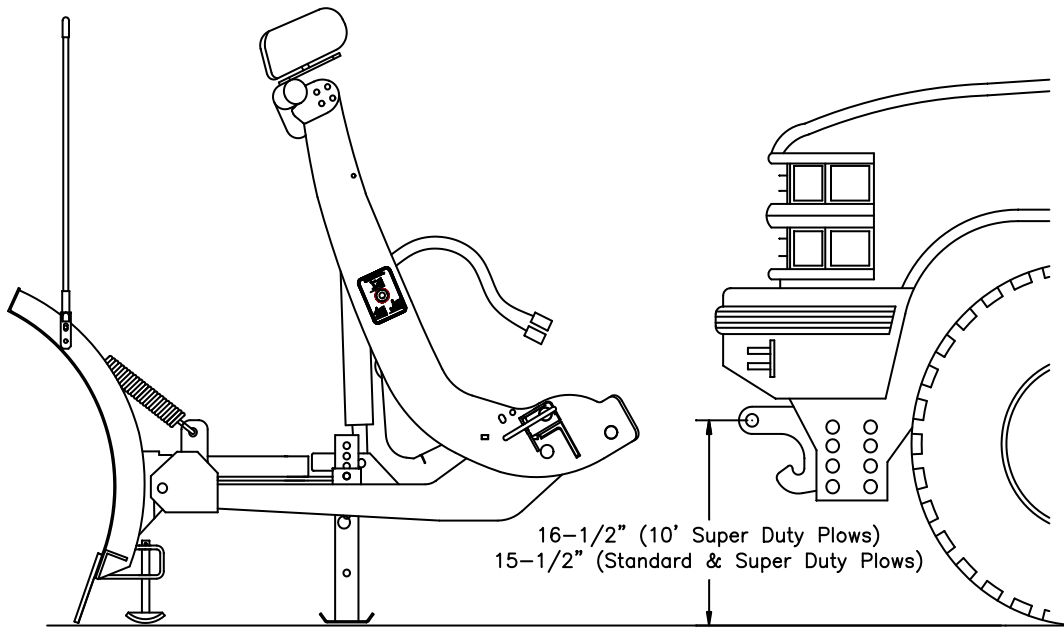


Figure 5.

G10155

GUIDE TO RECOMMENDED ASSEMBLY TORQUE



DIAMETER / PITCH	GRADE 5	GRADE 8	GRADE 8.8	GRADE 10.9
1/4-20	6	9		
5/16-18	14	19		
3/8-16	23	33		
7/16-14	38	53		
1/2-13	56	80		
9/16-12	82	116		
5/8-11	113	159		
3/4-10	201	283		
M10 X 1.25			36	
M10 X 1.5				49
M12 X 1.75				71
M14 X 2.0				80

ALL TORQUE VALUES ARE IN FOOT-POUNDS (FT.-LB.)

Figure 6.

G10410

* The torque values listed above are based on dry, coated bolts, variables such as oil, or other lubrications may appreciably alter these values and must be taken into consideration.

NOTE: IT IS IMPORTANT THAT ALL FASTENERS BE PROPERLY TORQUED TO ASSURE A SAFE OPERATING PLOW. RE-TORQUE ALL FASTENERS AFTER 2 HOURS OF SNOWPLOWING.