

**2005 & NEWER TOYOTA TACOMA
SPORT DUTY UNDERCARRIAGE
MOUNTING INSTRUCTIONS
(PART NO. LTA09240B)**

WARNING

Many newer trucks are now equipped with air bags. DO NOT under any circumstances disable, remove or relocate any sensors or other components related to the operation of the air bags.

For recommended vehicle models refer to the Boss Snowplow Application Chart and Selection Guide.

To comply with Federal Regulations and to assure a safe vehicle, the Front Gross Axle Weight Rating (FGAWR), Rear Gross Axle Weight Rating (RGAWR), and the Gross Vehicle Weight Rating (GAWR) must not be exceeded at any time.

Due to the variety of equipment that can be installed on this vehicle, it is necessary to verify that the Front Gross Axle Weight Rating (FGAWR), Rear Gross Axle Weight Rating (RGAWR), and the Gross Vehicle Weight Rating (GAWR) are not exceeded at any time. This may require weighing the vehicle and adding ballast as necessary. It may also limit payload capacity of the vehicle. It is the operator's responsibility to verify that these ratings are not exceeded.

2005 & NEWER TOYOTA TACOMA SPORT DUTY UNDERCARRIAGE MOUNTING INSTRUCTIONS

The mounting procedure outlined below covers the 2005 and Newer Toyota Tacoma trucks. You will need to refer to the illustrations and familiarize yourself with each of the undercarriage components and their relative position to each other and the frame. Then proceed as follows:

1. Begin by removing the bolts holding the skid plate to the bottom of the frame and the rear cross member. Remove the skid plate. Do not discard the skid plate or bolts so that they can be reinstalled at the end of the installation procedure.
2. Remove the four fasteners on top of the grill and pull the grill out without lifting up (lifting up can cause the horizontal tabs of the bottom of the grill to bend or break). Then remove the two small plastic body pieces under the headlights.
3. Remove the four bumper mount screws located on the bottom end of the bumper. Remove the two plastic bumper fasteners on top of the bumper. On each end of the bumper by the fender there is a clip. Lift the corner of the bumper up and out to release it from the clip. Retain the screws and fasteners as they will be reinstalled at the end of the installation procedure.
4. Remove the six nuts holding on the sub-bumper. Remove the sub-bumper and do not discard the nuts or sub-bumper.
5. On the outside of each frame rail there are three plastic plugs. Remove and discard them.
6. On each end of the frame (the part that drops down in the front) there are two removable blocks). Remove the bolt for each of the blocks on both sides of the frame. Remove the two bolts for the tie down hook on the bottom of the drop down part of the frame on the passenger side. Do not discard these items they will need to be reinstalled if the undercarriage is removed.
7. Place Driver Side Push Beam Support Plate (62B) against outside of the driver side frame rail and center the rectangle cut-out around the space where the blocks were removed.

8. Install the vertical bolt (A) into the bolt hole that was used by the block. Use the washer (E) and top lock nut (D) to hold the Driver Side Push Beam Support Plate (62 B) in place. Fasteners should be finger tight.
9. Install bolts (A and B) in the top two holes toward the back of the Driver Side Push Beam Support Plate (62B). Slide Nut Plate Bar (101) through the hole in the front of the frame between the three studs that held on the sub-bumper. Line the Nut Plate Bar up with bolts (A and B). Fasteners should be finger tight.
10. Using Bolt Puller (102) insert one Bolt (B) through the hole in the front of the frame between the three studs that held on the sub-bumper, and through the hole located between the two brackets on the side of the frame. Secure the Driver Side Push Beam Support Plate (62B) with one Split Lock Washer (G) and one Full Nut (F). Fasteners should be finger tight.
11. Repeat steps 7-10 for Passenger Side Push Beam Support Plate (62A).
12. Install Push Beam (62) between Passenger Side and Driver Side Push Beam Support Plates (62A and 62B) using eight bolts (A) and eight nyloc nuts (C). Push Beam (62) should be mounted at a height of 14" from the ground to the center of the hook hole. (Standard height is 14-1/2". The lower profile of the Tacoma does not allow for the recommended height.) Fasteners should be finger tight.
13. Tighten all fasteners, starting with Passenger and Driver Side Push Beam Support Plates (62A and 62B) and continuing forward.
14. Reinstall sub-bumper, bumper, plastic body pieces (underneath headlights), grill, and skid plate, respectively.
15. With all undercarriage parts in place, securely fasten all mounting hardware. It is important that all fasteners be properly torqued (see Fig. 3) to assure a safe operating plow. Re-tighten all fasteners after 2 hours of plowing.

Installation Notes:

- A. Use Headlight Adapter Kit MSC04599 for 05-15 or MSC05669 for 15+ and Turn Signal Relay Kit MSC09991.
- B. The best keyed ignition source is found in the cab on the driver's side near the bottom of the dashboard. Remove the small compartment; the fuse block is behind it.

2005 & NEWER TOYOTA TACOMA SPORT DUTY UNDERCARRIAGE INSTALLATION PROCEDURE

REF. NO.	DESCRIPTION	PART NO.	QTY.
62	Push Beam Assembly, HTX/Sport Duty	PBA05277	1
62A	Push Beam Support Plate, Passenger Side	PBA19037	1
62B	Push Beam Support Plate, Driver Side	PBA19035	1
101	1/2" – 13 Nut Plate Bar	PBA09238	2
102	5/8" – 11 Bolt Puller	MSC09738	2
	FASTENER KIT, TOYOTA TACOMA, 05 & UP	HDW09247	1
Includes:			
A	1/2"-13 x 1-1/2" Hex Head Bolt	HDW01728	12
B	5/8"-11 x 1- 1/2" Hex Head Bolt	HDW01727	4
C	1/2"-13 Hex Head Nyloc Nut	HDW01748	8
D	1/2"-13 Hex Head Top Lock Nut	HDW05554	2
E	1/2" Fender Washer 2" OD	HDW10982	2
F	5/8"-11 Hex Head Full Nut	HDW01777	2
G	5/8" Split Lock Washer	HDW03891	2

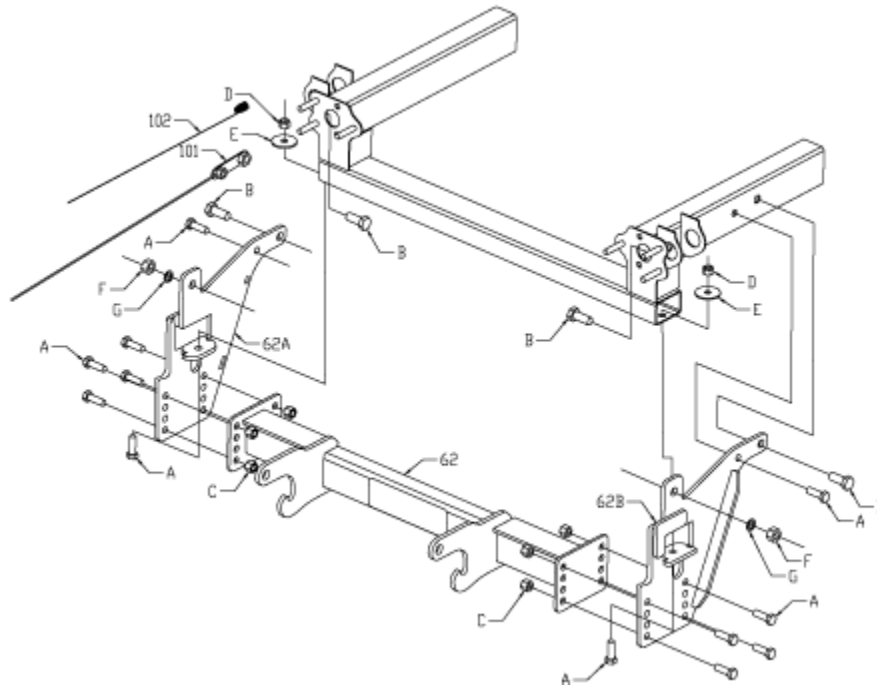


Figure 1

G10730

RECOMMENDED PUSHBEAM HEIGHT

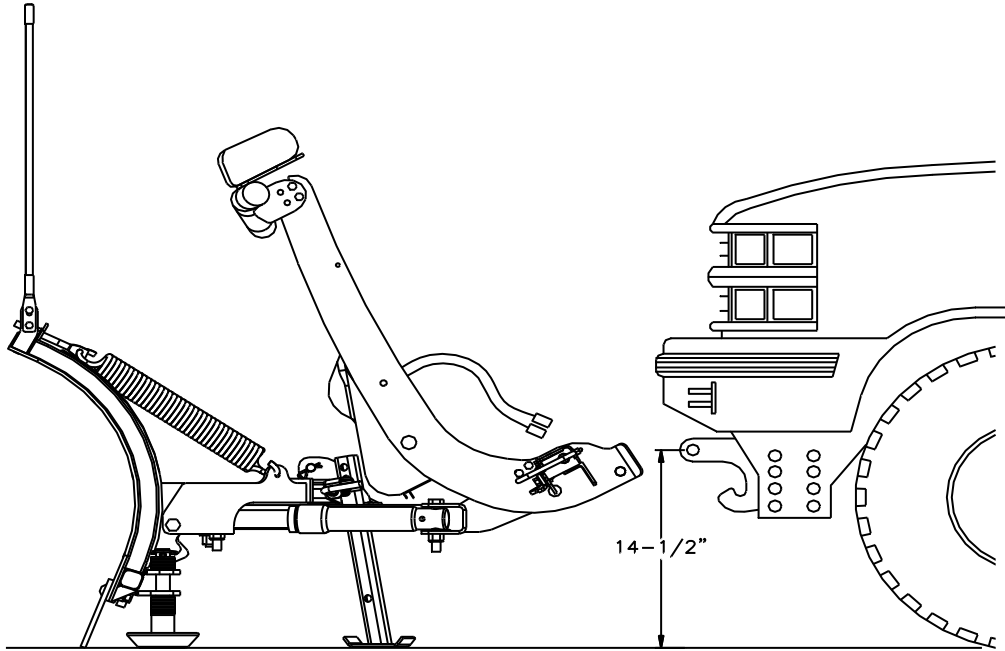
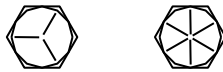


Figure 2

G10299

GUIDE TO RECOMMENDED ASSEMBLY TORQUE



DIAMETER / PITCH	GRADE 5	GRADE 8	GRADE 8.8	GRADE 10.9
1/4-20	6	9		
5/16-18	14	19		
3/8-16	23	33		
7/16-14	38	53		
1/2-13	56	80		
9/16-12	82	116		
5/8-11	113	159		
3/4-10	201	283		
M10 X 1.25			36	
M10 X 1.5				49
M12 X 1.75				71
M14 X 2.0				80

ALL TORQUE VALUES ARE IN FOOT-POUNDS (FT.-LB.)

Figure 3

G10410

* The torque values listed above are based on dry, coated bolts, variables such as oil, or other lubrications may appreciably alter these values and must be taken into consideration.

NOTE: IT IS IMPORTANT THAT ALL FASTENERS BE PROPERLY TORQUED TO ASSURE A SAFE OPERATING PLOW. RE-TIGHTEN ALL FASTENERS AFTER 2 HOURS OF PLOWING.