



A Division of Northern Star Industries, Inc.  
P.O. Box 787 Iron Mountain, MI 49801-0787  
ISO 9001:2008 REGISTERED  
bossplow.com

**2013 & NEWER INTERNATIONAL  
TERRASTAR 4x4  
RT3 & 10' UNDERCARRIAGE  
MOUNTING INSTRUCTIONS  
(PART NO. LTA09250) &  
(PART NO. LTA09285)**

# **WARNING**

Always follow the vehicle manufacturers' recommendations relating to system installation.

Due to the variety of equipment that can be installed on this vehicle, it is necessary to verify that the Front Gross Axle Weight Rating (FGAWR), Rear Gross Axle Weight Rating (RGAWR), and the Gross Vehicle Weight Rating (GAWR) are not exceeded at any time. This may require weighing the vehicle and adding ballast as necessary. It may also limit payload capacity of the vehicle. It is the operator's responsibility to verify that these ratings are not exceeded.

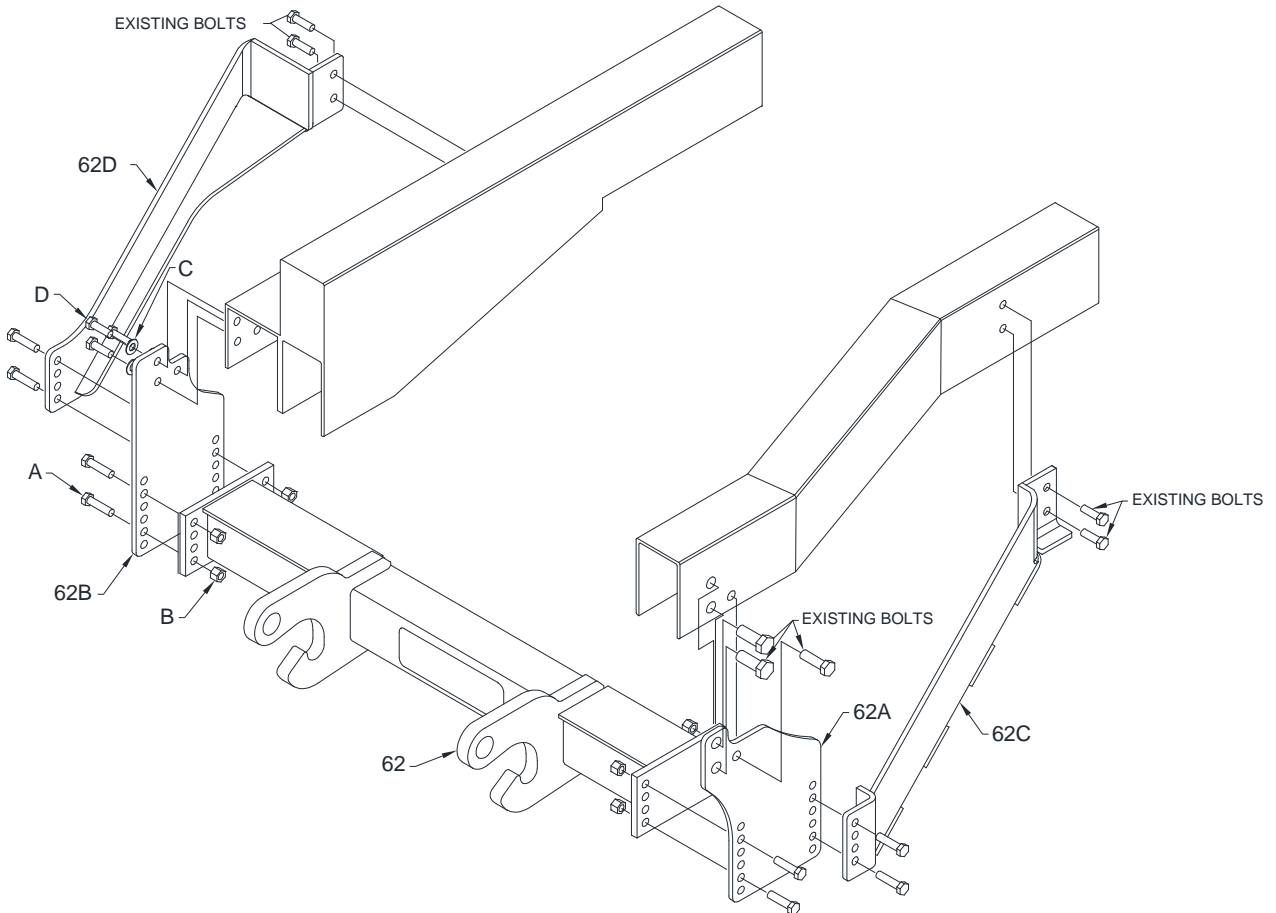
## **2013 & NEWER INTERNATIONAL TERRASTAR RT3 & 10' UNDERCARRIAGE MOUNTING INSTRUCTIONS**

The mounting procedure outlined below covers 2013 & newer International Terrastar 4x4 models. You will need to refer to the illustrations and familiarize yourself with each of the undercarriage components and their relative position to each other. Then proceed as follows:

1. Remove three of the four bumper bracket bolts on the driver side. Keep the bolts as they will be needed to fasten the driver side support plate to the frame.
2. Place the driver side support plate (62A) to the outside of the bumper bracket and align the holes. Add bolts back from previous step but leave finger tight.
3. Remove the two existing bolts on the driver side further back on the frame and keep for securing the driver side arm bracket (62C).
4. Place the driver side arm bracket (62C) between the frame and pitman arm, align the holes and place bolts from previous step back, keeping them finger tight.
5. Remove three of the four bumper bracket bolts from the passenger side.
6. Place the passenger side support plate to the outside of the bumper bracket and install the three M12 (D) bolts and the three ½" washers (C) as shown in Figure 1. Keep finger tight.
7. Remove the jounce stop on the passenger side frame rail further back on the frame. This will be a metal bracket held on by two bolts. Keep the bolts nuts to secure the passenger side arm bracket. Keep the jounce stop and put back if the undercarriage ever comes off the vehicle.
8. Align the holes where the jounce stop was on the frame with the holes on the passenger side arm bracket (62D) and install bolts from previous step. Keep finger tight.
9. Install push beam (62) between support plates (62A) & (62B) with the eight ½"-12 X 2" hex head bolts (A) and the eight ½" nylon lock nuts (B), capturing both arm brackets (62C) & (62D) on the outside of each support plate as shown in Figure 1. The push beam should be mounted at 15-1/2" (RT3) or 16-1/2" (10') from the ground as shown in Figure 2.
10. With all undercarriage parts in place, securely fasten all mounting hardware. It is important that all fasteners be properly torqued (see Figure 3) to assure a safe operating plow. Re-tighten all fasteners after two hours of plowing.

## 2013 & NEWER INTERNATIONAL TERRASTAR RT3 & 10' UNDERCARRIAGE INSTALLATION PROCEDURE

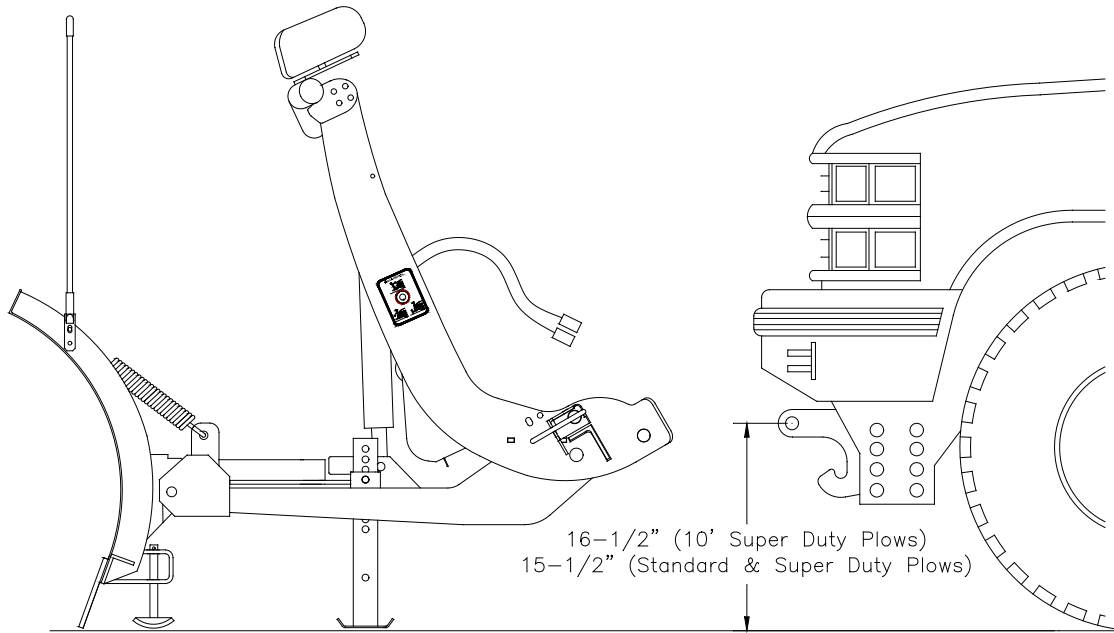
REF. NO.	DESCRIPTION	PART NO.	QTY.
62	Push Beam Assembly 10'	PBA09255	1
62	Push Bean Assembly RT3	PBA09260	1
62A	Push Beam Support Plate, DS	PBA09266	1
62B	Push Beam Support Plate, PS	PBA09267	1
62C	Arm Bracket, DS	LTA09257	1
62D	Arm Bracket PS	LTA09262	1
	FASTENER KIT,TERRASTAR,13 & UP	HDW09271	1
Includes:			
A	½"-13 X 2" Hex Head Bolt	HDW01755	8
B	½"-13 Nylon Lock Nut	HDW01748	8
C	½" Flat Washer	HDW05501	3
D	M12 X 1.75mm Pitch X 40mm Hex Head Bolt	HDW09274	3



**Figure 1**

G10825

## RECOMMENDED PUSHBEAM HEIGHT



**Figure 2**

G10155

## GUIDE TO RECOMMENDED ASSEMBLY TORQUE



DIAMETER / PITCH	GRADE 5	GRADE 8	GRADE 8.8	GRADE 10.9
1/4-20	6	9		
5/16-18	14	19		
3/8-16	23	33		
7/16-14	38	53		
1/2-13	56	80		
9/16-12	82	116		
5/8-11	113	159		
3/4-10	201	283		
M10 X 1.25			36	
M10 X 1.5				49
M12 X 1.75				71
M14 X 2.0				80

ALL TORQUE VALUES ARE IN FOOT-POUNDS (FT.-LB.)

**Figure 3**

G10410

\* The torque values listed above are based on dry, coated bolts, variables such as oil, or other lubrications may appreciably alter these values and must be taken into consideration.

**NOTE:** IT IS IMPORTANT THAT ALL FASTENERS BE PROPERLY TORQUED TO ASSURE A SAFE OPERATING PLOW. RE-TIGHTEN ALL FASTENERS AFTER 2 HOURS OF PLOWING.