

PARTS & INSTALLATION INSTRUCTIONS

MEYER SNOW PLOW MOUNTING FOR 1988* & LATER ISUZU 4X4 PICKUP

IMPORTANT NOTICE

End user must be given this information prior to delivery of this Snow Plow.

The equipment you have just purchased should only be used on vehicles equipped with the Manufacturer's Snow Plow Preparation Packages. Snow Plowing without the original Snow Plow Preparation Package may damage your vehicle and the added weight to the equipment may impair the operation and control of the vehicle. Snow plowing with a vehicle that the manufacturer does not recommend for that purpose may void your new vehicle warranty. If your vehicle is not originally equipped with the Snow Plow Preparation Package, additional parts may be necessary before snow plowing. Owners of these vehicles should consult their dealers before purchase or installation of such parts. CAUTION: The installation, on any vehicle, of these parts is not a full substitute for the original equipment Snow Plow Preparation Package.

WARNING: Lift Arm extends beyond bumper of vehicle. To minimize damage from a front-end collision, Lift Arm should be removed from vehicle when Snow Plow is removed.

PARTS LIST

Item	Part No.	Quantity	Description
	18048	1	MOUNTING CARTON
1	11190	1	• Mounting Weldment, R.H.
2	11191	1	• Mounting Weldment, L.H.
3	11110	1	• Lift Frame
4	11152	1	• Support Brace, R.H.
5	11153	1	• Support Brace, L.H.
6	11193	1	• Clevis Frame
7	10716	1	• Light Bracket, R.H.
8	10715	1	• Light Bracket, L.H.
9	10514	1	• Lift Arm
10	10529	1	• Support Arm
11	13594	1	• A-Frame
12	12984	1	• Pivot Bar
13	12978	2	• Trip Spring
	08584	1	• Hardware Bag - Mounting
14	20066	6	• Bolt H 3/8-16 x 1-1/4" Gr. 5
15	20141	4	• Bolt H 5/8-11 x 2" Gr. 5
16	20142	4	• Bolt H 5/8-11 x 2-1/4" Gr. 5
17	20144	1	• Bolt H 5/8-11 x 2-3/4" Gr. 5
18	20147	1	• Bolt H 5/8-11 x 3-1/2" Gr. 5
19	20309	10	• Locknut, 5/8-11
20	20310	2	• Locknut, 3/4-10
21	20357	2	• Flatwasher, 5/8
22	20327	6	• Lockwasher 3/8
23	10538	2	• Quick Disconnect Pin
24	21984	2	• Hair Pin Cotter
25	14595	2	• Special Bolt, 3/4"
26	21988	4	• Bolt H 12mm x 1,25P x 30mm Gr. 8.8
27	21991	4	• Lockwasher, 12mm
	08511	1	• Hardware Bag - Moldboard
28	11006	2	• Hinge Pins
29	22083	2	• Linch Pin
30	12150	2	• Eye Bolts
31	20309	5	• Locknuts 5/8-11
32	13598	2	• Pivot Bolts
33	13591	1	• King Bolt
34	20150	2	• Bolt 5/8-11 x 4-1/2" GR 5
35	20318	4	• Nuts, Eslock, 5/8-11
	09916	1	• Snow Plow Marker Kit
36	08201	2	• Snow Plow Marker Assy.
37	12816	2	• Clamp
38	20005	2	• Bolt, H 1/4-20 x 1"
39	20312	2	• Locknut, 1/4-20
40	20325	2	• Lockwasher 1/4
	09102	1	MOLDBOARD ASSEMBLY TM-6.5
42	09100	1	• Cutting Edge - TM-6.5
43	21943	6	• Bolt C 1/2-13 x 1-3/4"
44	20307	6	• Locknut 1/2-13

Parts indented are included in the carton, bag or assembly under which they are indented. When ordering parts furnish Part No., Name and Description. Also furnish Vehicle Model and Year, Type of Hydraulic Unit and Moldboard Size.

Meyer Products reserves the right, under its continuing product improvement program, to change construction or design details, specifications and prices without notice or without incurring any obligation.

*1988 4x4 pickups have a build date of 12-87 and later.

GENERAL INFORMATION

CAUTION: Always disconnect battery before beginning installation.

DO NOT burn holes or weld vehicle frame. This may cause frame failure.

After first use retighten all mounting bolt connections to specified torque. All mounting bolt connections to be checked periodically for tightness.

Check contents against the parts list to determine all are correct and included, and also to familiarize yourself with them.

Locknuts are furnished. Do not tighten bolts and nuts until installation is complete (unless otherwise specified), then be sure to tighten all attaching parts per specified torque chart.

It is important that the Meyer harness, all wires from the Meyer light switch, and all other electrical wires be routed around hot or moving engine parts, and any sharp sheet metal. Protection must be provided to guard against wire damage at these points. All excess or loose wire must be neatly secured using wire ties.

INSTALLATION INSTRUCTIONS

- A. **DO NOT** remove bumper from vehicle. Begin installation by attaching Mounting Weldments (1 & 2) to Vehicle Frame using Special Bolt (25), 3/4 Locknut (20) and 5/8 x 2" Bolt (15), 5/8 Flatwasher (21) and 5/8 Locknut (19). Do not tighten.
- B. Loosely attach Lift Frame (3) to Mounting Weldments (1 & 2) at hole "A" using 5/8 x 2" bolts and 5/8 Locknuts (19).
- C. Hold Support Braces (4 & 5) and Clevis Frame (6) in position and attach to Lift Frame (3) and Mounting Weldments (1 & 2) using 5/8 x 2-1/4" Bolts (16) and 5/8 Locknuts (19).
- D. Attach back end of Support Braces (4 & 5) to lower holes of vehicle constant velocity joint housing using 12mm x 30mm bolts (26) and 12mm lockwashers (27).
- E. Tighten bolts holding Mounting Weldments (1 & 2) to vehicle frame according to values shown in torque chart. Pull forward on Lift Frame (3) to take slack out of mounting holes and tighten all other fasteners.

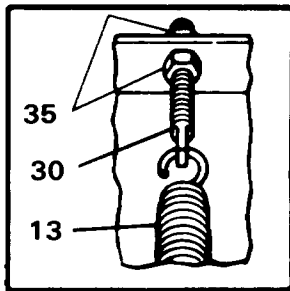



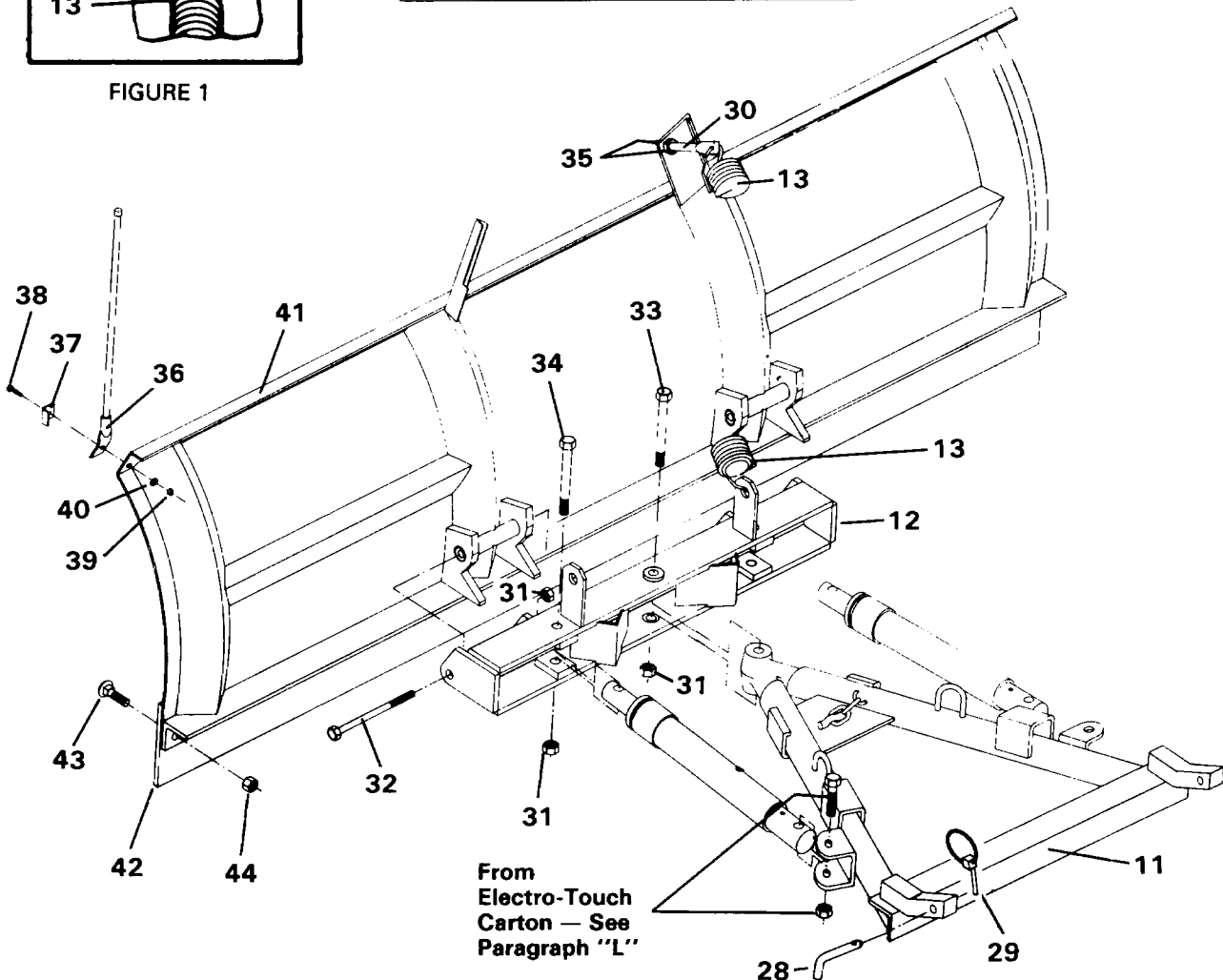


FIGURE 1

TORQUE CHART FOOT LBS.

Bolt-Nut Size	GR. 2	GR. 5 of 8.8 Metric	GR. 8
			
1/4 - 20	4 - 5	26 - 29	60 - 66
5/16 - 18	9 - 11	42 - 46	90 - 100
3/8 - 16	17 - 20	64 - 72	179 - 198
7/16 - 14		127 - 141	
1/2 - 13		227 - 251	
5/8 - 11			
3/4 - 10			

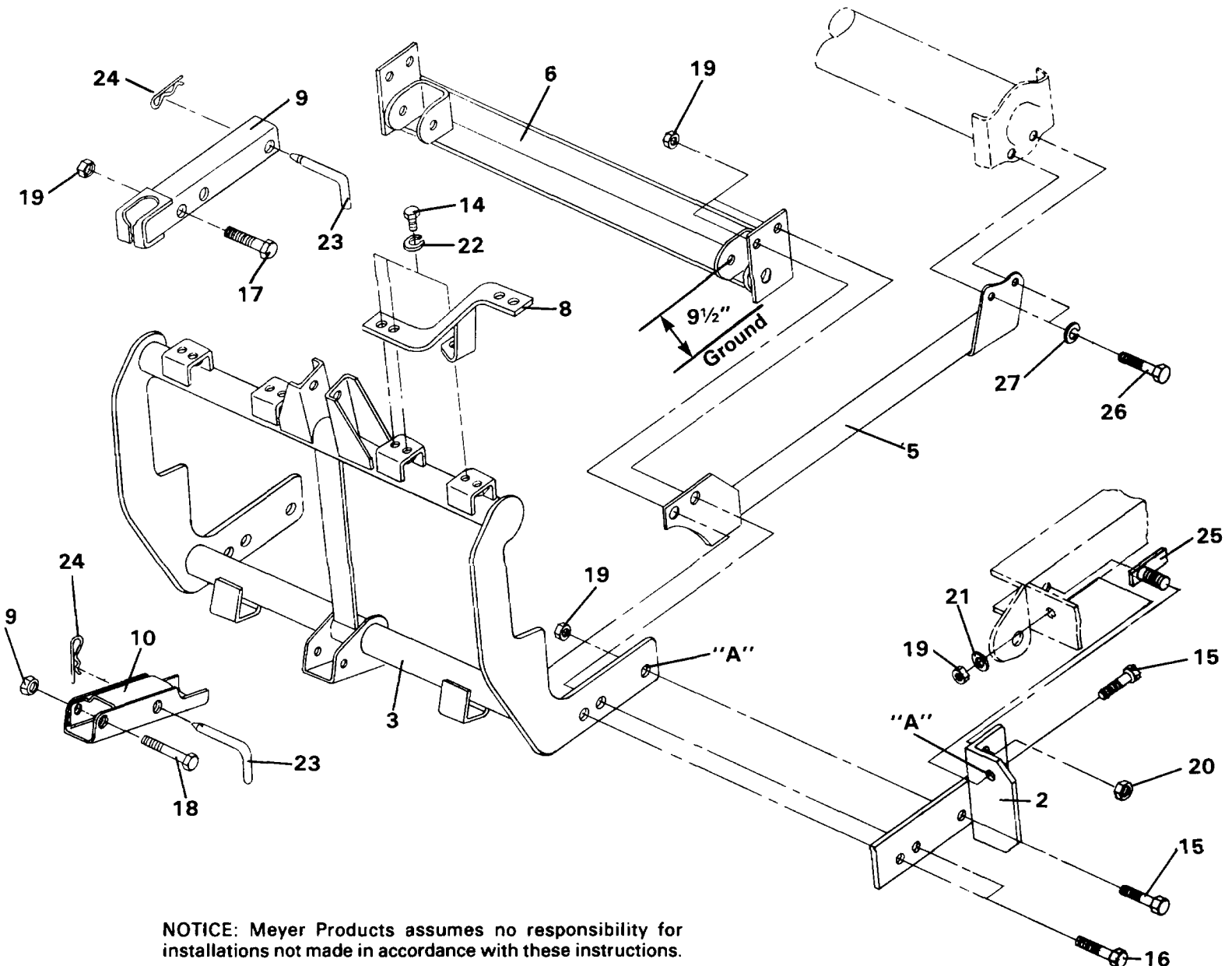


19

2

19

- F. Attach Light Brackets (7 & 8) to weldnuts in Lift Frame (3) with 3/8" x 1-1/4" bolts (14) and 3/8" lockwashers (22). Install Headlights per separate instructions. Be certain back of Headlights do not interfere with opening and closing of vehicle hood.
- G. Attach Electro-Touch Unit to Support Arm (10) using 5/8" x 3-1/2" bolt (18) and 5/8" locknut (19) and to Lift Arm (9) using 5/8" x 2-3/4" bolt (17) and 5/8" locknut (19). Secure this assembly to Lift Frame (3) using Quick-Disconnect pins (23) and hair pin cotters (24).
- H. Install Electro-Touch wiring system per separate instructions.
- I. Attach Pivot Bar (12) to Moldboard (41) using pivot bolts (32) coated with chassis lubricant, and 5/8" locknuts (31).
- J. Attach Trip Springs (13) to Pivot Bar (12) and Moldboard (41) with eye bolts (30) and locknuts (35). Flat end of eye bolt (30) must be in a vertical position, as shown in Figure 1, to hinge properly when Moldboard (41) trips. Proper tension is attained when Trip Spring (13) coils begin to separate and then tightening top locknut (35) four additional turns. Tighten bottom locknut (35) to secure eye bolt (30) in position. See Figure 1.
- K. Assemble A-frame (11) to Pivot Bar (12) using King bolt (33) and 5/8" locknut (31). Grease King bolt (33) prior to installation.
- L. Install Power-Angling Rams with fitting end to the A-frame (11) using 5/8" x 3-1/4" bolt and 5/8" locknut (packed in hardware bag 08363 in Electro-Touch carton). Attach piston end of ram to Pivot Bar (12) using 5/8" x 4-1/2" bolt (34) and 5/8" locknut (31).
- M. Straighten end of Plow Markers (36) so they will be vertical after installation. Attach using 1/4" x 1" Bolt (38), Clamp (37), 1/4" Locknut (39) and Lockwasher (40).
- N. Secure the Moldboard-Pivot Bar-A-frame assembly to vehicle at Clevis Frame (6) using hinge pins (28) and hair pin cotters (29). Attach Lift Chain to Lift Arm (9) with sufficient slack to allow Moldboard to follow ground contours.



NOTICE: Meyer Products assumes no responsibility for installations not made in accordance with these instructions.