



## PARTS & INSTALLATION INSTRUCTIONS

### 2002 & Later MITSUBISHI L200

### 4 x 4 Vehicles

#### IMPORTANT NOTICE

**End user must be given this instruction sheet prior to delivery of this Snow Plow.**

The equipment you have just purchased should only be used on vehicles equipped with the Manufacturer's Snow Plow Preparation Packages. Snow Plowing without the original Snow Plow Preparation Package may damage your vehicle and the added weight to the equipment may impair the operation and control of the vehicle. Snow Plowing with a vehicle that the manufacturer does not recommend for that purpose may void your new vehicle warranty. If your vehicle is not originally equipped with the Snow Plow Package, additional parts may be necessary before snow plowing. Owners of these vehicles should consult their dealers before purchase or installation of such parts. CAUTION: the installation, on any vehicle, of these parts is not a full substitute for the original equipment Snow Plow Preparation Package.

**Warning: Lift Arm extends beyond bumper of vehicle. To minimize damage from a front-end collision, Lift Arm should be removed from vehicle when Snow Plow is removed.**

#### Mounting Carton L/PAF 18115 / Mounting Carton W/PAF 18116DP

#### Parts List

Item	Part No.	PartNo.	Qty.	Description
	<b>18115</b>	<b>18116DP</b>	<b>1</b>	<b>Mounting Carton</b>
1	11925	11925	1	• Clevis Frame
2	11967	11967	2	• Side Plate - 02' L200
3	10514	10514	1	• Lift Arm
	-----	12978	2	• Trip Spring
	-----	12959	1	• Pivot Bar
	-----	13778	1	• A-Frame
4	11462	11462	2	• Receiver Tube Cap-TM
	08783	08783	1	<b>Hardware Bag</b>
5	11006	11006	2	• Hinge Pin
6	20095	20095	8	• Bolt H 1/2-13 x 1-1/2" Gr.5
7	20101	20101	2	• Bolt H 1/2-13 x 3" Gr.5
8	20144	20144	1	• Bolt H 5/8-11 x 2-3/4" Gr. 5
9	20146	20146	2	• Bolt H 5/8-11 x 3-1/4" Gr. 5
10	14595	14595	2	• 3/4-10 Special Bolt
11	20307	20307	10	• Locknut Esna 1/2-13
12	20309	20309	3	• Locknut 5/8-11
13	20310	20310	2	• Locknut 3/4-10
14	11976	11976	1	• Angle
15	10797	10797	2	• Spacer
16	21984	21984	2	• Hair Pin Cotter
	08626	08626	1	<b>Kit: Light Elevation</b>
17	11368	11368	2	• Bracket
18	20095	20095	2	• Bolt 1/2-13 x 1-1/2" Gr. 5
19	20307	20307	2	• Locknut Esna 1/2-13
	-----	08156	1	• <b>Snow Plow Hardware Bag</b>
	-----	08852	1	• <b>Marker Kit</b>
20	11275	11275	1	<b>Lift Frame</b>

**Parts indented are included in the assembly under which they are indented.**

Meyer Products reserves the right, under its continuing product improvement program, to change construction or design details, specifications and prices without notice or without incurring any obligation.

Meyer Products LLC  
18513 Euclid Ave. • Cleveland, Ohio 44112-1084  
Phone 486-1313 (Area Code 216)  
www.meyerproducts.com • email info@meyerproducts.com



Meyer Products LLC  
6 Angell Lane • Damariscotta, ME 04543-4507  
Phone 563-2227 (Area Code 207)  
www.meyerproducts.com • email info@meyerproducts.com

## GENERAL INFORMATION

**CAUTION:** Always disconnect battery before beginning installation.

**DO NOT BURN** holes or **WELD** vehicle frame. This may cause frame failure.

After first use, re-tighten all mounting bolt connections to specified torque. All mounting bolt connections to be checked periodically for tightness.

Locknuts are furnished **DO NOT** tighten bolts and nuts until installation is complete (unless otherwise specified), then be sure to tighten all attaching parts per specified torque chart.

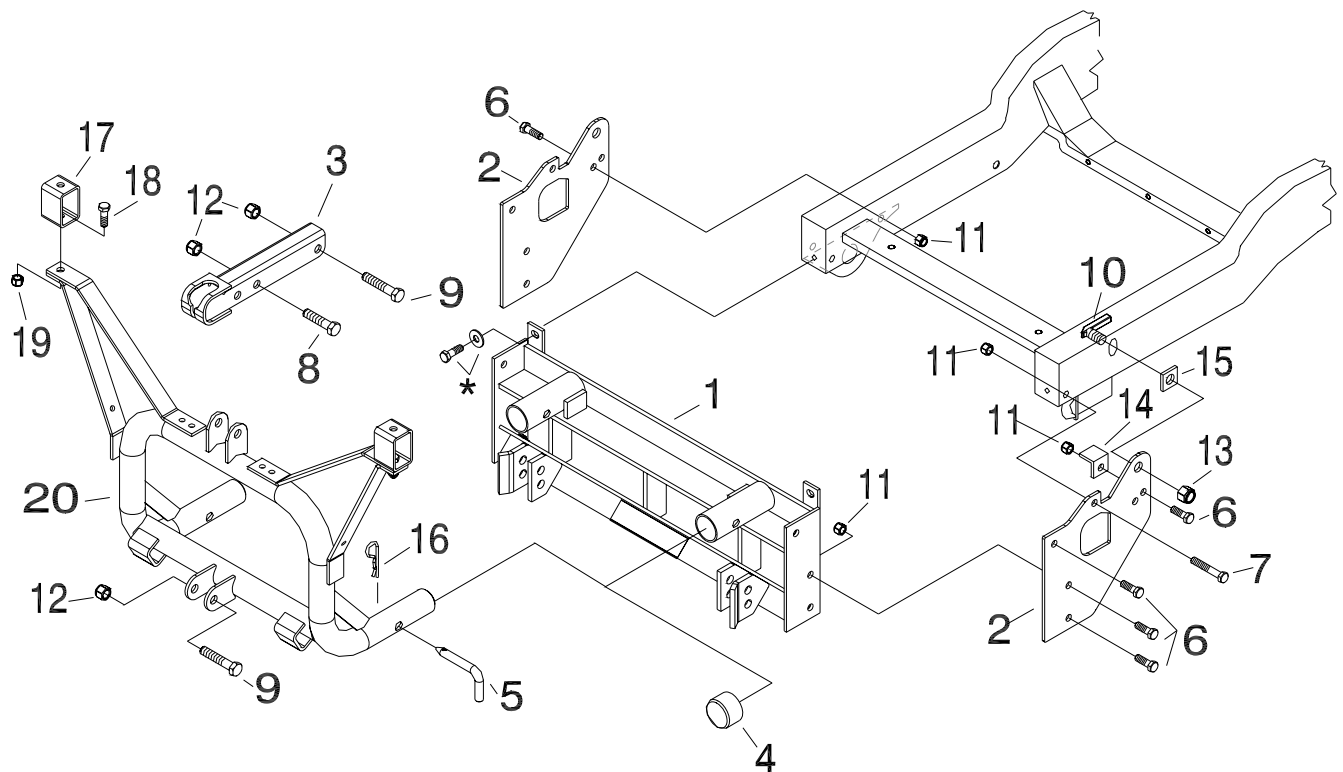
Follow these instructions explicitly. Warranty does not apply to a Meyer product which has been negligently or improperly assembled or installed.

**NOTE:** It is important that the Meyer harness, all wires from the Meyer light switch, and all other electrical wires be routed around hot or moving engine parts, and any sharp metal. Protection must be provided to guard against wire damage at these points. All excess or loose wires must be neatly secured using wire ties.

Check contents against the parts list to determine all are correct and included, and also to familiarize yourself with them.

**SAFETY PRECAUTIONS** should be used when **Hydraulic Unit is in OPERATION** and plow is in a **RAISED** position. **Lower plow to ground when vehicle is PARKED.**

**OVERHAUL** and **SERVICE INFORMATION** are covered on separate instructions.






\* Denotes original vehicle fasteners.

## Installation Instructions

- A. Remove the front bolt and washer (\*) on each side of the frame just slightly under the bumper with a 14mm open end wrench. Retain, they will be reused.
- B. Position Clevis Frame (1) onto the front of the frame and align the the outermost slots to where the bolts were removed in step A. Attach Clevis Frame on both sides reusing the bolts and washers (\*) from step A. Do not tighten at this time.
- C. Attach Side Plates (2) to the sides of clevis (1) using three 1/2-13 x 1-1/2" bolts (6), and 1/2-13 locknuts (11) per side. Do not tighten at this time, keep side plates (2) loose for next step.
- D. Install 3/4-10 Special Bolt (10) through the large vertical slot on the side of the frame and then through the uppermost hole on Side Plate (2) on each side. Note: Be sure to install spacer (15) between the frame and Side Plate (2) on both sides. Finish by installing 3/4-10 locknuts to 3/4-10 Special Bolts (10) on each side. Do not tighten at this time.
- E. On the driver's side only: Attach Angle (14) to Side Plate's rear most hole using a 1/2-13 x 1-1/2" bolt (6), and 1/2-13 locknut (11). Snug bolt while keeping top surface of angle flush with the bottom of the frame.
- F. On the passenger's side only: Continue attaching side plate (2) to the lower plate coming off the bottom of the frame using a 1/2-13 x 1-1/2" bolt (6), and 1/2-13 locknut (11) in the hole shown in diagram.
- G. Finish attaching side plate's (2) front hole to the frame using 1/2-13 x 3" bolt (7), and 1/2-13 locknut (11) on both sides as shown in diagram.
- H. Push Clevis back and tighten all fasteners to their proper torque. Tighten bolts in the same order they were assembled to the vehicle.
- I. Install Lift Frame (20) into the tubes on the Clevis Frame.
- J. Secure Lift Frame (20) to Clevis Frame using Hinge Pin (5) and Hair Pin Cotter (16).
- K. Attach lift arm (3) to lift frame (20) using 5/8-11 x 3-1/4 bolt (9) and lock nut (12). Mount Hydraulic unit to lift frame using 5/ 8-11 x 3-1/4 bolt (9)and locknut (12), and to lift arm (3) using 5/8-11x2-3/4 bolt (8) and lock nut (12).  
**(SEE LIFT ARM WARNING)**
- L. Install Light Extensions (17) Part No. 08626 using 1/2-13 x 1-1/2 bolt (18) and lock nut (19).
- M. Install hydraulic system and snow plow lights per separate instructions.
- N. Pre-Assemble Snow Plow Assembly, A-frame and Pivot Bar per separate instructions.
- O. Attach the A-Frame chain to the Lift Arm (3) allowing sufficient slack to enable the Snow Plow to follow ground contour while plowing.

**Note: When the lift frame module (20) is removed from the vehicle, the insides of the clevis frame (1) receiver tubes and outside ends of the lift frame should be coated with chasis grease / anti-sieze lubricant and the protective receiver tube caps (4)**

### TORQUE CHART FOOT LBS.

Bolt Nut Size	Gr. 2 	Gr. 5 	Gr. 8 
1/4 - 20	4 - 5		
5/16 - 18	9 - 11		
3/8 - 16	17 - 20	26 - 29	
7/16 - 14		42 - 46	60 - 66
1/2 - 13		64 - 72	90 - 100
5/8 - 11		127 - 141	179 - 198
3/4 - 10		227 - 251	

**Note: Before installing lift frame tubing to clevis frame, liberally coat ends of lift frame with chasis grease anti-sieze lubricant.**

**Meyer Products assumes no responsibility for installations not made in accordance with these instructions.**