

PILOT - CHECK VALVE KIT

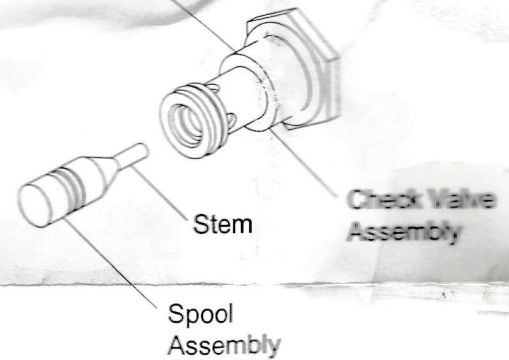
66785

This kit can be used to replace any one of the four pilot operated check valves in the hydraulic unit. All four pilot check valves are identical.

WARNING

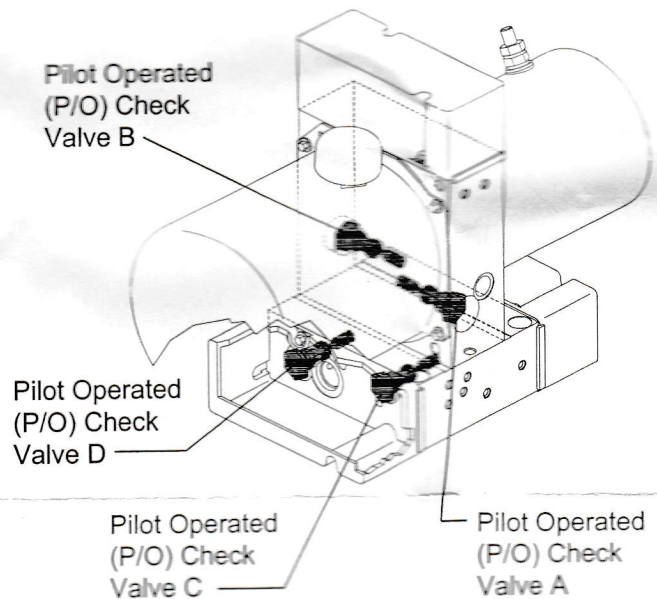
Keep clear of the blade when it is being raised, lowered, or angled. Do not stand between the vehicle and the blade, or directly in front of the blade. If the blade hits you or drops on you, you could be seriously injured.

Do not apply anti-seize compound or grease to threads.



PILOT CHECK VALVE KIT INSTALLATION

1. Remove existing check valve assembly from manifold block. Using long slender needle nosed pliers, remove the spool from the bore.
2. Oil all o-rings and install the spool assembly by holding the stem with long slender needle nosed pliers and carefully inserting it fully into the bore. Install the check valve assembly and torque to 120 in-lbs.



The company reserves the right under its product improvement policy to change construction or design details and furnish equipment when so altered without reference to illustrations or specifications used herein