

SNOWEX ✓

Ice Control

HELIXX™ 0.7 CU YD Stainless Steel Hopper Spreader



TRIPLE THREAT

SPREAD, PRE-WET OR SPRAY WITH ONE MACHINE

The new HELIXX 0.7 cubic yard stainless steel hopper spreader is right sized for today's most popular half-ton and light-duty trucks. Like the full-sized HELIXX units, the 0.7 cubic yard model provides excellent material flow, but in a more compact size that's better suited to handle smaller spaces and jobs. Also, by adding an optional plug-and-play upgrade kit, you can spread, pre-wet or spray with one machine.

Photo may be shown with optional accessories.

Truck Bed Spreader

HELIXX™ 0.7 cu yd Stainless Steel Hopper

MODEL	12140
Capacity (Volume)	0.7 cu yd
Capacity (Weight)	1,500 lb
Empty Weight	337 lb
Hopper Length	54.5"
Min. Bed Length Required	44"
Spread Width	30'



Photo may be shown with optional accessories.

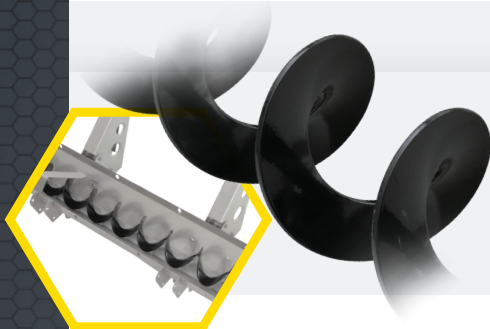
HELIXX Material Delivery (Patent Pending)

The corkscrew, or "helix," design of the HELIXX material delivery system is optimized for efficient and cost-effective use of salt, and was designed to operate in the target range for salt spreading best practices. Its innovative design helps prevent clogs and provides a superior material flow to traditional augers.

Material Compatibility

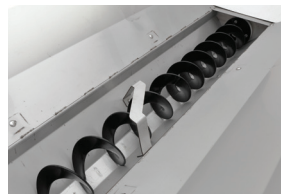
- ✓ Bulk Rock Salt
- ✓ 50/50 Salt/Sand Mix*
- ✓ Dry Free-Flowing Sand*
- ✓ Bagged Ice Melters
- ✓ High End Flake/Pellet Materials

*Optional inverted V and vibrator kits are recommended for materials that are susceptible to compacting.



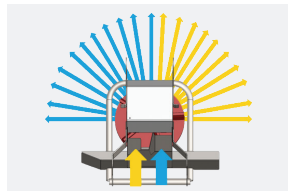
Stainless Steel

Hopper and frame are constructed of corrosion-resistant stainless steel. The frame features a unique leg and sill design to form a ridged backbone structure for greater durability, and riveted construction provides consistent, quality joints.



Full Length HELIXX System

The HELIXX system runs the entire length of the hopper with variable flights, promoting even unloading of material.



Chute Baffle System

Baffles within the chute direct material to key areas on the spinner resulting in a remarkably even and consistent spread pattern, as well as reducing material directed back at the vehicle.



Flip-Up/Removable Chute

Remove a single pin to flip-up the chute for easy access to the hitch and clean out. The chute can be completely removed with just two pins.



Accessory Integration

Conveniently connect accessories directly into the hub mounted in the back of the hopper. Accessories automatically integrate with the hopper control without having to run additional wires from the front of the truck.



Dual Variable-Speed Control

Allows for variable control of spinner and HELIXX system speeds for precise material delivery, whether at low or high output. Features no-blast startup, auto reverse and integrates with accessories (including pre-wet and direct liquid application).

Accessories Include: 50 Gallon Pre-Wet and Direct Liquid Application Kit, 0.5 cu yd Extension Collars, Spill Guards, Inverted V Kit, Vibrator Kit, Work Light Kit, Strobe Light Kit, Ratchet Strap Kit



Pre-Wet and Direct Liquid Application Capable

The HELIXX 0.7 cu yd stainless steel spreader is a triple threat—with the ability to spread, pre-wet or spray. By adding pre-wet tanks, a pump and a spray kit, the spreaders not only can pre-wet materials, but they can also be used for spraying brine directly onto the driving surface for anti-icing applications.



TrynEx International, LLC | 531 Ajax Drive | Madison Heights, Michigan 48071

snowexproducts.com

TrynEx International, LLC reserves the right under its product improvement policy to change construction or design details and furnish equipment when so altered without reference to illustrations or specifications used. TrynEx International, LLC or the vehicle manufacturer may require or recommend optional equipment for spreaders/sprayers. Do not exceed vehicle ratings with a spreader/sprayer. This product is manufactured under the following US patents: 7,400,058; 7,737,576; other patents pending. TrynEx International, LLC offers a limited warranty for all spreaders/sprayers and accessories. See separately printed page for this important information. The following are registered (®) or unregistered (™) trademarks of Douglas Dynamics, LLC: HELIXX™, SnowEx®.