



**Fisher Engineering**

50 Gordon Drive, Rockland, Maine 04841-2139 • www.fisherplows.com

**99000, 99001  
99005, 99009**

January 1, 2020  
Lit. No. 99594, Rev. 11

**STEEL-CASTER™**

## Hopper and Drive Components

### STEEL-CASTER™ Hopper Spreader with Electric Motors

#### Parts List

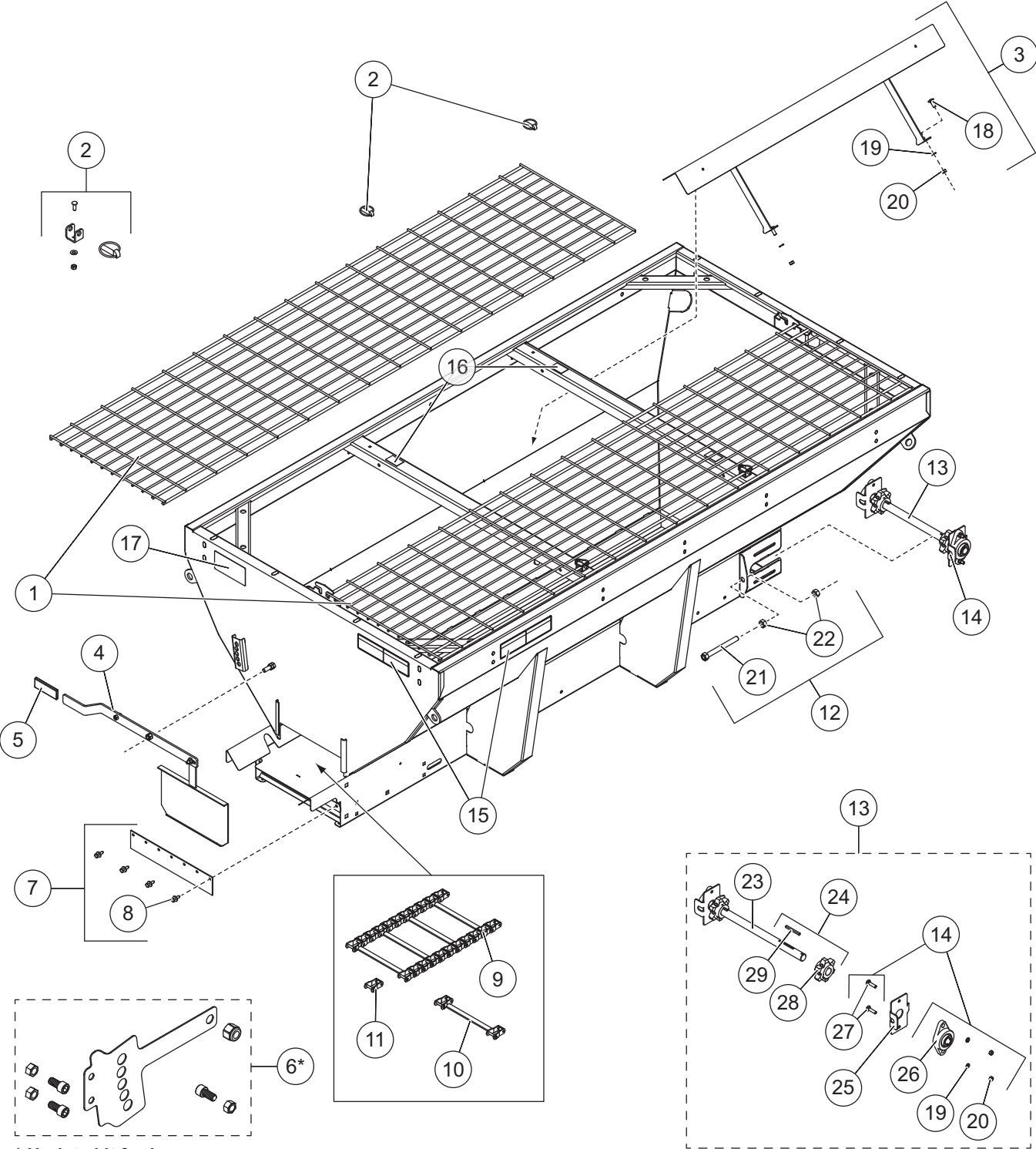


This Parts List is for FISHER® STEEL-CASTER hopper spreaders with serial numbers beginning with 150515 through 170628.

A DIVISION OF FISHER, LLC

# STEEL-CASTER™ HOPPER SPREADER

## HOPPER COMPONENTS



\* Update kit for hoppers without a feed gate lock bracket.

# STEEL-CASTER™ HOPPER SPREADER

Hopper Components							
Item	Part	Qty	Description	Item	Part	Qty	Description
1	99515	2	Top Screen – 7'	9	68474	1	Pintle Chain (123 links) 9' Hopper
	99516	2	Top Screen – 8'		94898	1	Pintle Chain (108 links) 7' & 8' Hoppers
	99517	2	Top Screen – 9' Narrow (3.0 yd <sup>3</sup> )	10	68492	1	Conveyor Repair Bar w/Pins & Cotters
	99518	2	Top Screen – 9' Wide (4.5 yd <sup>3</sup> )	11	68475	1	Conveyor Repair Link w/Pins & Cotters
2	99578	1	Screen Attachment Kit (set of 4)	12	99073	2	Tensioner Bolt Kit
3	99482	1	Inverted V Kit – 7' & 8' Hoppers	13	99480	1	Idler Shaft Assembly Kit
ns	99119	1	Inverted V Kit – 9' Hopper	14	94953	2	Spreader Bearing Kit
4	99083	1	Feed Gate Assembly	15	68584	2	Label – Warning/Caution, Spreaders
5	99523	1	Rubber Grip, Feed Gate Handle	16	67272	4	Label – Caution, Do Not Lift
6*	90952	1	Feed Gate Update Kit	17	11100	1	Label – Warning, Rear Camera
7	78266	1	Wiper Replacement Kit	ns	68790	1	Ratchet Straps Kit (pkg of 4)
8	99079	1	Rivet Kit, Steel Hopper Wiper (pkg of 4)				
<b>Item 3 99482 (7' &amp; 8' hoppers) / 99119 (9' hoppers) Inverted V Kits</b>							
18		4†	3/8-16 x 1 Carriage Bolt SS	20		8‡	3/8-16 Hex Nut SS
19		8‡	3/8 Lock Washer SS				
<b>Item 12 99073 Tensioner Bolt Kit</b>							
21		1	5/8-11 x 6 Take-Up Bolt	22		2	5/8-11 Hex Nut
<b>Item 13 99480 Idler Shaft Assembly Kit</b>							
14	94953	2	Spreader Bearing Kit	24	99479	2	6-Tooth Sprocket
23	94351	1	Idler Shaft	25	99765	2	Bearing Alignment Plate
<b>Item 14 94953 Spreader Bearing Kit</b>							
19		2	3/8 Lock Washer SS	26	94536	1	Bearing 1.125 ID 2-Bolt Flange
20		2	3/8-16 Hex Nut SS	27		2	3/8-16 x 1-1/2 Carriage Bolt SS
<b>Item 24 99479 6-Tooth Sprocket</b>							
28		1	Drive Sprocket 6T	29	95076	1	1/4 x 2-3/4 Machine Key
SS = Stainless Steel                          ns = not shown                          G = Grade							

\* Update kit required when installing replacement feed gate on hoppers without an existing lock bracket.

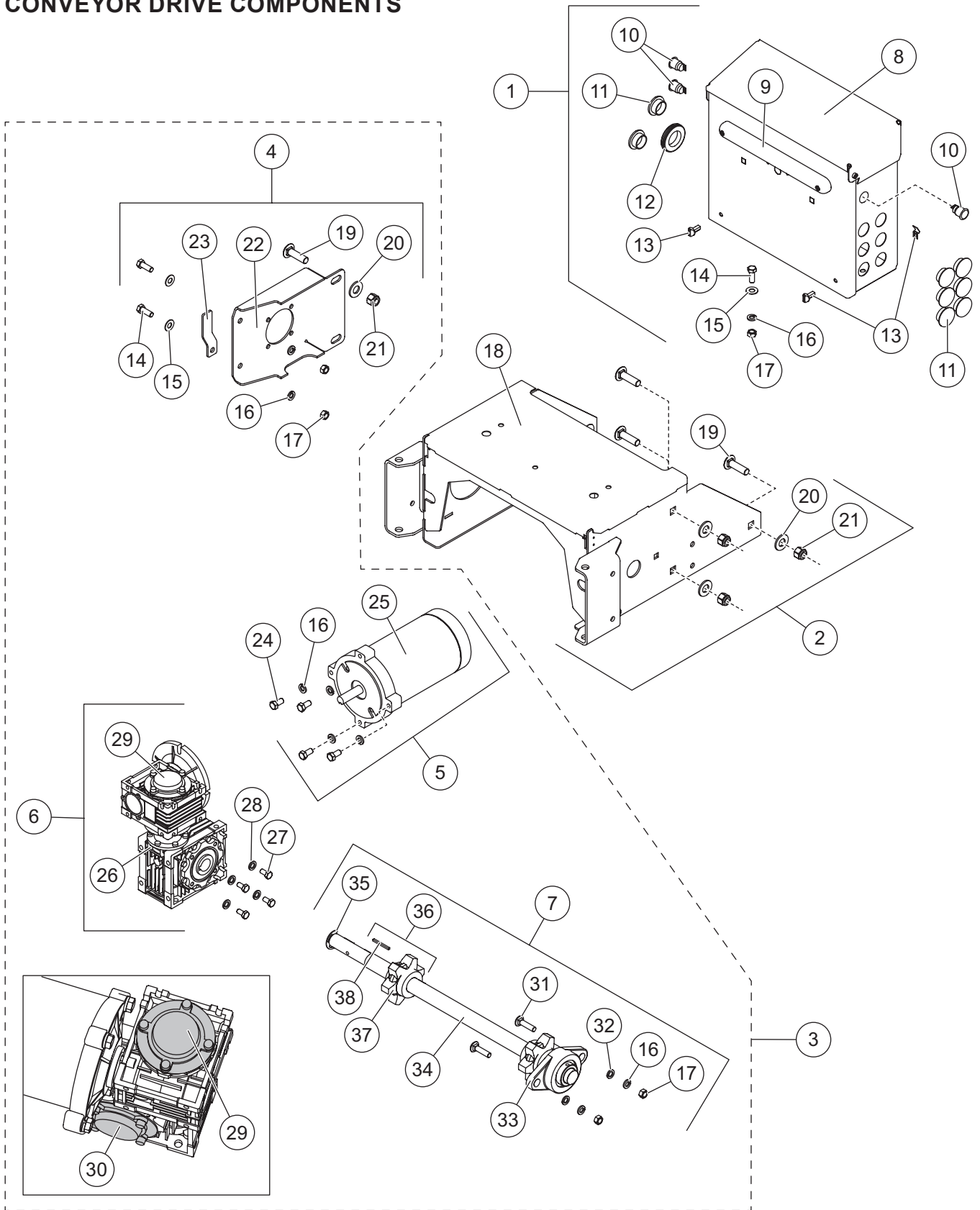
† Qty 6 for 9' hopper.

‡ Qty 10 for 9' hopper.

Labels – STEEL-CASTER & FISHER® Logos							
Item	Part	Qty	Description	Application			
				7' (1.5 yd <sup>3</sup> )	8' (2.0 yd <sup>3</sup> )	9' (3.0 yd <sup>3</sup> )	9' (4.5 yd <sup>3</sup> )
ns	96992	2	Side Logo – STEEL-CASTER Small	■	■		■
ns	96994	2	Side Logo – STEEL-CASTER Large			■	
ns	96991	1	Rear Logo – FISHER Splatter Small	■	■		
ns	20238	1	Rear Logo – FISHER Splatter Large			■	■
ns = not shown							

# STEEL-CASTER™ HOPPER SPREADER

## CONVEYOR DRIVE COMPONENTS

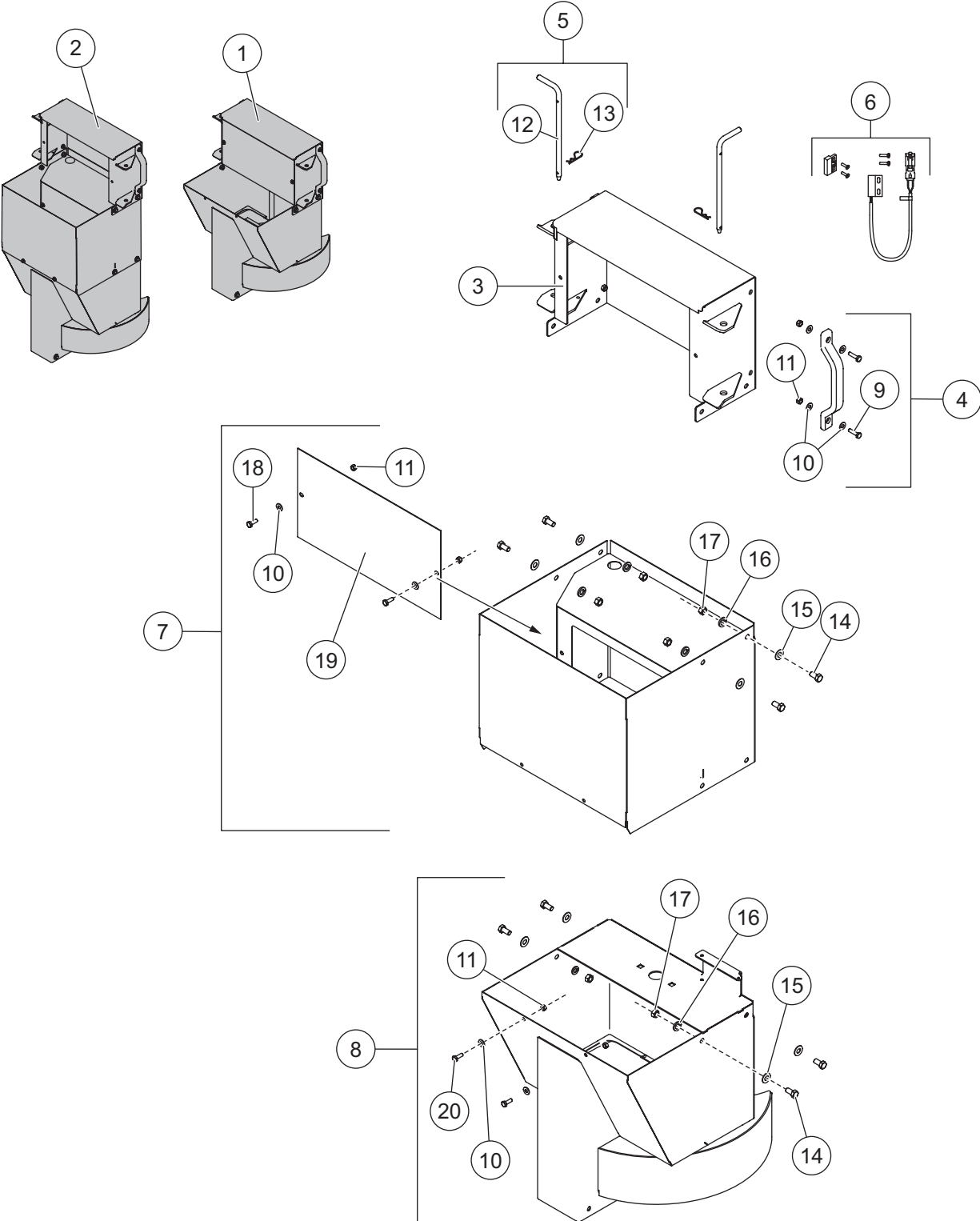


# STEEL-CASTER™ HOPPER SPREADER

Conveyor Drive Components							
Item	Part	Qty	Description	Item	Part	Qty	Description
1	99077	1	Electrical Box Assembly	5	99085	1	Conveyor Motor Kit
2	99092	1	Electric Power Group Mount Kit	6	99087	1	Gear Box Kit
3	99091	1	Electric Conveyor Drive Kit	7	99094	1	Drive Shaft Kit, Electric
4	99089	1	Gear Box Bracket Kit	ns	99744	1	Label Kit, SH Electrical Control Box
<b>Item 1 99077 Electrical Box Assembly</b>							
8	99696	1	Electrical Box	13	99570	1	Electrical Box Latch Kit (pkg of 2)
9	99080	1	CHMSL Kit	14		3	3/8-16 x 1 Hex Cap Screw SS
10	99254	3	Switch, Push Button	15		3	3/8 Flat Washer SS
11	99195	8	Break-Thru Plug	16		3	3/8 Lock Washer SS
12		1	0.25 Grommet	17		3	3/8-16 Hex Nut SS
<b>Item 2 99092 Electric Power Group Mount Kit</b>							
18	99569	1	Electric Power Group Mount	20		6	1/2 Flat Washer SS
19		6	1/2-13 x 1-3/4 Carriage Bolt SS	21		6	1/2-13 Locknut SS
<b>Item 3 99091 Electric Conveyor Drive Kit</b>							
4	99089	1	Gear Box Bracket Kit	6	99087	1	Gear Box Kit
5	99085	1	Conveyor Motor Kit	7	99094	1	Drive Shaft Kit, Electric
<b>Item 4 99089 Gear Box Bracket Kit</b>							
14		2	3/8-16 x 1 Hex Cap Screw SS	20		2	1/2 Flat Washer SS
15		2	3/8 Flat Washer SS	21		2	1/2-13 Locknut SS
16		2	3/8 Lock Washer SS	22		1	Gear Box Bracket
17		2	3/8-16 Hex Nut SS	23		1	Cable Boot Stand
19		2	1/2-13 x 1-3/4 Carriage Bolt SS	ns	99775	1	Cable Boot – 8-Pin
<b>Item 5 99085 Conveyor Motor Kit</b>							
16		4	3/8 Lock Washer SS	25		1	Motor 1/2 hp NEMA 56C
24		4	3/8-16 x 3/4 Hex Cap Screw SS				
<b>Item 6 99087 Gear Box Kit</b>							
26	99067	1	Gear Box 10 x 10 2X Worm Gear	29	86792	1	Gear Box Cover Kit, Primary
27		4	M8 x 1.25 x 16 Hex Cap Screw SS	30	86799	1	Gear Box Cover Kit, Secondary
28		4	M8 Lock Washer SS				
<b>Item 7 99094 Drive Shaft Kit, Electric</b>							
16		2	3/8 Lock Washer SS	33	94536	1	Bearing 1.125 ID 2-Bolt Flange
17		2	3/8-16 Hex Nut SS	34		1	Drive Shaft Assembly
31		2	3/8-16 x 1-1/2 Carriage Bolt SS	35	330	1	1" Retaining Ring
32	91123	2	3/8 Flat Washer SS	36	99479	2	6-Tooth Sprocket
<b>Item 36 99479 6-Tooth Sprocket</b>							
37		1	Drive Sprocket 6T	38	95076	1	1/4 x 2-3/4 Machine Key
SS = Stainless Steel    ns = not shown    M = Metric							

# STEEL-CASTER™ HOPPER SPREADER

## CHUTE ASSEMBLY COMPONENTS



# STEEL-CASTER™ HOPPER SPREADER

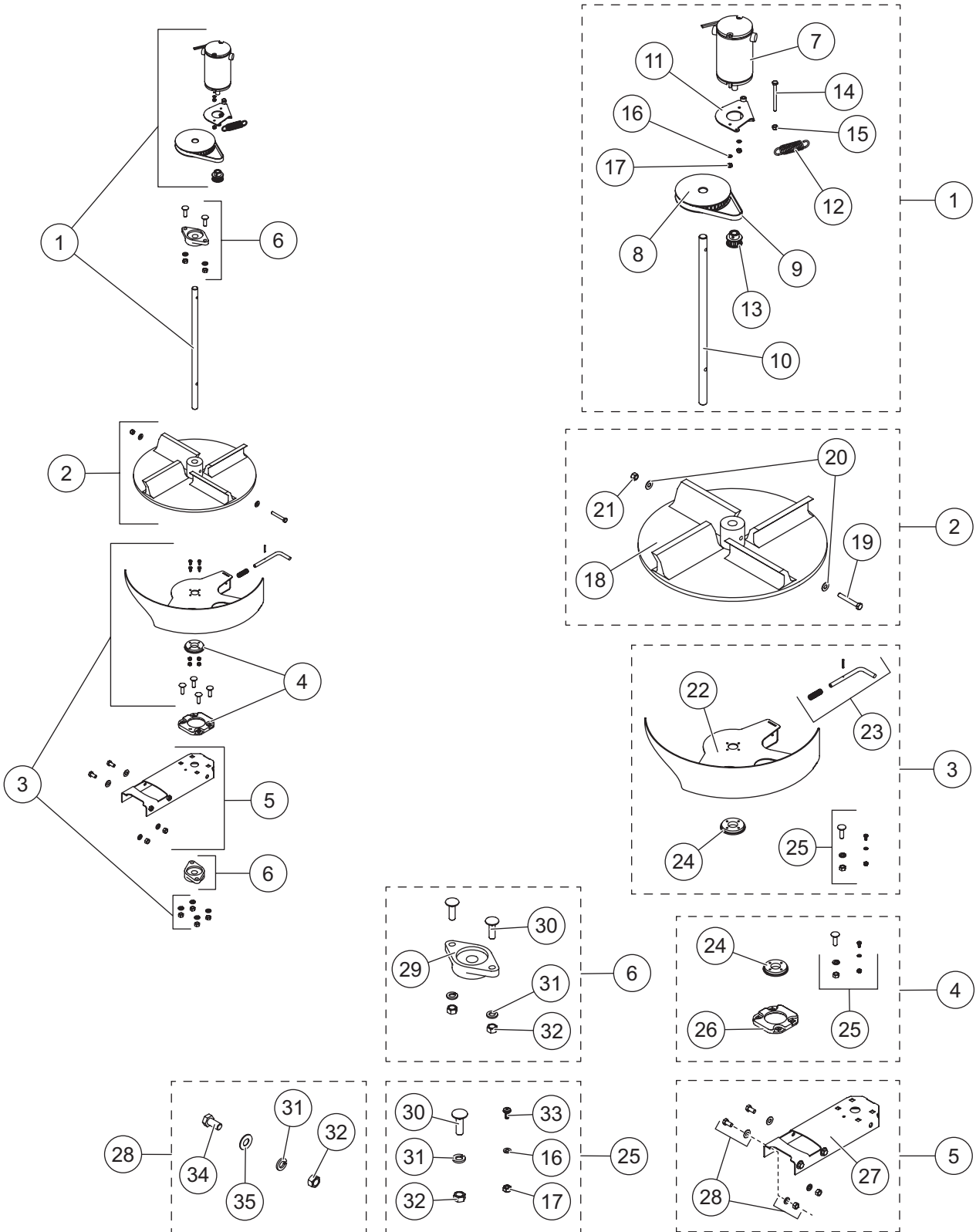
<b>Chute Assembly Components</b>							
<b>Item</b>	<b>Part</b>	<b>Qty</b>	<b>Description</b>	<b>Item</b>	<b>Part</b>	<b>Qty</b>	<b>Description</b>
1	99132*	1	Short Chute Assembly – Complete	5	99613	1	Chute Attachment Kit
2	99096*	1	Long Chute Assembly – Complete	6	99568	1	Magnetic Chute Interlock Kit
3	96386	1	Chute Upper Section	7	99139†	1	Chute Middle Section Kit
4	99098	2	Handle Kit	8	99137	1	Chute Lower Section Kit
<b>Item 4</b>				<b>99098 Handle Kit</b>			
	9	2	1/4-20 x 1-1/4 Hex Cap Screw SS	11		2	1/4-20 Locknut GB SS
	10	4	1/4 Flat Washer SS				
<b>Item 5</b>				<b>99613 Chute Attachment Kit</b>			
	12	2	3/8 x 8-1/4 Chute Pin	13		2	3/32 x 2-1/4 Cotter Pin
<b>Item 7</b>				<b>99139† Chute Middle Section Kit</b>			
	–	1	Chute Extension, Electric	16		4	3/8 Lock Washer SS
	10	2	1/4 Flat Washer SS	17		4	3/8-16 Hex Nut SS
	11	2	1/4-20 Locknut GB SS	18		2	1/4-20 x 3/4 Hex Cap Screw
	14	4	3/8-16 x 3/4 Hex Cap Screw SS	19	99207	1	Chute Motor Cover
	15	4	3/8 Flat Washer SS				
<b>Item 8</b>				<b>99137 Chute Lower Section Kit</b>			
	–	1	Lower Chute Body	15		4	3/8 Flat Washer SS
	10	2	1/4 Flat Washer SS	16		4	3/8 Lock Washer SS
	11	2	1/4-20 Locknut GB SS	17		4	3/8-16 Hex Nut SS
	14	4	3/8-16 x 3/4 Hex Cap Screw SS	20		2	1/4-20 x 3/4 Hex Cap Screw SS
SS = Stainless Steel				G = Grade			

\* Includes spinner and shutter assemblies shown on following page.

† Not used in the 99132 short chute assembly.

# STEEL-CASTER™ HOPPER SPREADER

## SPINNER DRIVE & SHUTTER ASSEMBLIES



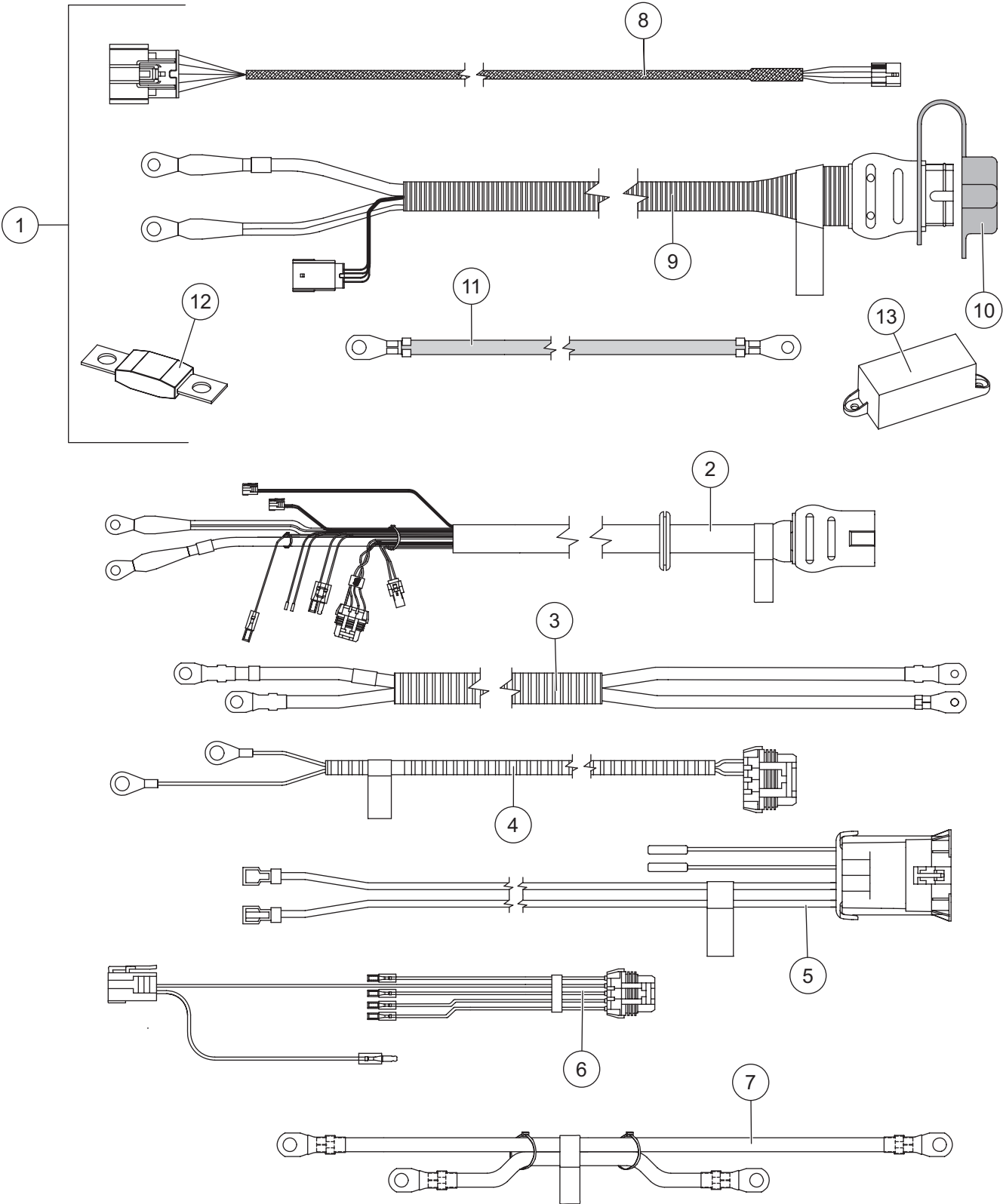


# STEEL-CASTER™ HOPPER SPREADER

<b>Spinner Drive &amp; Shutter Assemblies</b>							
<b>Item</b>	<b>Part</b>	<b>Qty</b>	<b>Description</b>	<b>Item</b>	<b>Part</b>	<b>Qty</b>	<b>Description</b>
1	96506	1	Chute Drive Service Kit	4	96504	1	Chute Shutter Bearing Kit
2	99485	1	Poly Spinner Kit	5	96392	1	Shutter Bearing Support Kit
3	99135	1	Shutter Replacement Kit	6	96501	2	Bearing Kit
<b>Item 1</b>				<b>96506 Chute Drive Service Kit</b>			
7	93200	1	Motor 12V 1/3-hp	13	76795	1	10-Tooth Pulley, Drive Gear
8	76796	1	40-Tooth Cogged Belt Pulley 3/4 Bore	ns	99614	1	Bolt Bag, Chute Service Kit
9	M1355	1	Spinner Drive Belt	14		1	1/4-20 x 3 Hex Cap Screw SS
10	99228	1	Spinner Shaft	15		1	1/4-20 Locknut GB SS
11		1	Spinner Motor Tensioner Plate	16		2	#10 Flat Washer SS
12	99776	1	Spinner Motor Spring SS	17		2	#10-32 Locknut GB SS
<b>Item 2</b>				<b>99485 Poly Spinner Kit</b>			
18		1	Spinner, Black Poly – CW Rotation	20		2	5/16 Flat Washer SS
19		1	5/16-18 x 2-1/4 Hex Cap Screw SS	21		1	5/16-18 Locknut GB SS
<b>Item 3</b>				<b>99135 Shutter Replacement Kit</b>			
22		1	Chute Shutter	24		1	Chute Shutter Bearing – Inner
23	96505	1	Shutter Lock Pin Kit	25	99615	1	Bolt Bag – Shutter
<b>Item 4</b>				<b>96504 Chute Shutter Bearing Kit</b>			
24		1	Chute Shutter Bearing – Inner	26		1	Chute Shutter Bearing – Outer
25	99615	1	Bolt Bag – Shutter				
<b>Item 5</b>				<b>96392 Shutter Bearing Support Kit</b>			
27		1	Chute Lower Bearing Support	28	96529	1	Bolt Bag – Shutter Bearing Support
<b>Item 6</b>				<b>96501 Bearing Kit</b>			
29	96167	1	Pillow Block Bearing 3/4 Bore	31		2	3/8 Lock Washer SS
30		2	3/8-16 x 1-1/4 Carriage Bolt	32		2	3/8-16 Hex Nut SS
<b>Item 25</b>				<b>99615 Bolt Bag – Shutter</b>			
16		4	#10 Flat Washer SS	31		4	3/8 Lock Washer SS
17		4	#10-32 Locknut GB SS	32		4	3/8-16 Hex Nut SS
30		4	3/8-16 x 1-1/4 Carriage Bolt	33		4	#10-32 x 1/2 #2 Pan Head Screw SS
<b>Item 28</b>				<b>96529 Bolt Bag – Shutter Bearing Support</b>			
31		4	3/8 Lock Washer SS	34		4	3/8-16 x 3/4 Hex Cap Screw SS
32		4	3/8-16 Hex Nut SS	35		4	3/8 Flat Washer SS
			SS = Stainless Steel				ns = not shown
							G = Grade

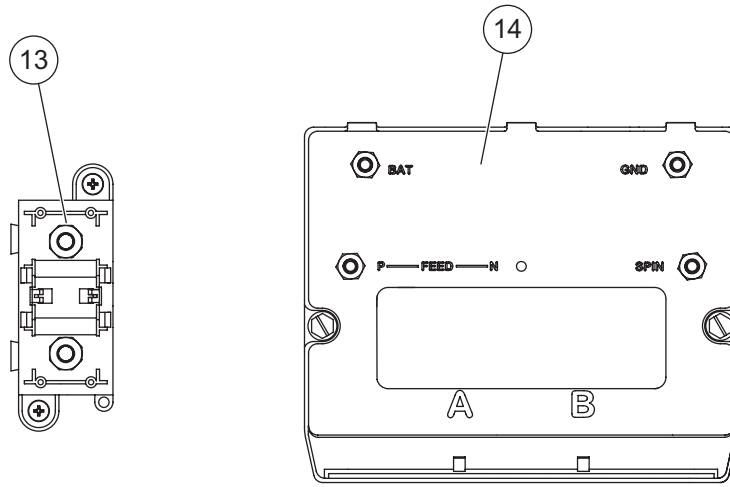
# STEEL-CASTER™ HOPPER SPREADER

## HARNESSING COMPONENTS



# STEEL-CASTER™ HOPPER SPREADER

## ELECTRICAL BOX COMPONENTS



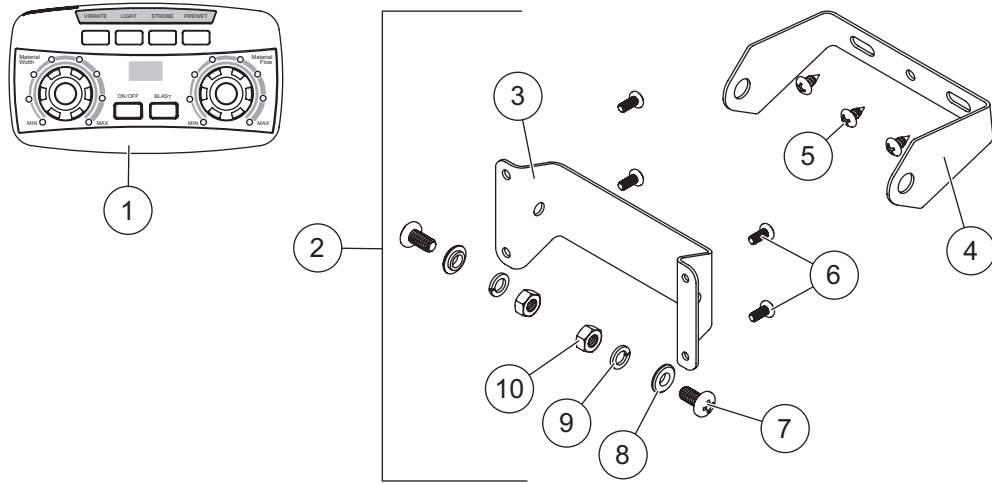
Cables & Harnessing, Electrical Components							
Item	Part	Qty	Description	Item	Part	Qty	Description
1	78402	1	Vehicle-Side Harness Kit	6	69939	1	10-Pin Connector w/Switch Connector
2	69906	1	Hopper Harness Assembly	7	78385	1	Cable – Module to Isolated Stud Block
3	78987	1	Conveyor Motor Cable	ns	99772	1	Motor Terminal Cover Kit (pkg of 2)
4	78361	1	Cable Assembly 20" – Spinner Motor				
5	78105	1	Cable Assembly 45" – Spinner Motor				
<b>Item 1 78402 Vehicle-Side Harness Kit</b>							
8	69902	1	Vehicle Control Harness	12	95836	1	Fuse, 100A
9	76057	1	Vehicle Harness Assembly*	13	95837	1	Fuse Holder/Isolated Stud Block
10	99759	1	Plug Cover	ns		6	HD Cable Tie, 25.25"
11	22511	1	22" Battery Cable – Red	ns		10	Cable Tie, 5.35"
<b>Electrical Box Components</b>							
13	95837	1	Fuse Holder/Isolated Stud Block	14	52385	1	Spreader Module 4-Post

ns = not shown

\* Includes the plug cover (item 10).

# STEEL-CASTER™ HOPPER SPREADER

## CAB CONTROL



99533 Cab Control Kit							
Item	Part	Qty	Description	Item	Part	Qty	Description
1	99773	1	Cab Control 2-Knob	2	52345	1	Cab Control Bracket Kit
<b>Item 2</b>				<b>52345 Cab Control Bracket Kit</b>			
3		1	Bracket, Control Inner	7		2	1/4-20 x 1/2 Pan Head Machine Screw SS – Black Oxide
4		1	Bracket, Control Outer	8		2	1/4 Shoulder Washer – Black Oxide
5		3	#10 x 3/8 Tapping Screw SS	9		2	1/4 Lock Washer SS
6		4	#8-32 x 3/8 Phillips Pan Head Machine Screw	10		2	1/4-20 Hex Nut G5 – Black Oxide
G = Grade				SS = Stainless Steel			

# STEEL-CASTER™ HOPPER SPREADER

---

## ACCESSORIES

Accessory Kits			
Part	Description	Part	Description
99139	Chute Middle Section/Extension Kit	78402†	Vehicle-Side Harness Kit
99686	License Plate Light Kit	99488	Hopper Side Extension Kit
99505-1	Primary Work Light Kit	92532	Truck Mount Kit, 2 Bars – 7' & 8' Hoppers
99732-1	Secondary Work Light Kit	92533	Truck Mount Kit, 3 Bars – 9' Hopper
99494	Strobe Light Kit	99690	Tie-Down Kit SH, Chain
76668*	Vibrator Kit		

\* Requires installation of 76669 Vibrator Adapter Service Kit.

† Contains all vehicle-side electrical components except control.

Pre-Wet Kits			
Part	Description	Part	Description
76400	Standard Pump Kit, On-Off System	76425	50-Gallon Tank Kit (2 x 25 gal)
76420	Deluxe Pump Kit, Full-Feature System	76450	100-Gallon Tank Kit (2 x 50 gal)
76405	Pre-Wet Pump Switch Kit		

# STEEL-CASTER™ HOPPER SPREADER

---



Fisher Engineering  
50 Gordon Drive  
Rockland, ME 04841-2139  
*www.fisherplows.com*

**A DIVISION OF FISHER, LLC**

Copyright © 2020 Douglas Dynamics, LLC. All rights reserved. This material may not be reproduced or copied, in whole or in part, in any printed, mechanical, electronic, film, or other distribution and storage media, without the written consent of Fisher Engineering. Authorization to photocopy items for internal or personal use by Fisher Engineering outlets or spreader owner is granted.

Fisher Engineering reserves the right under its product improvement policy to change construction or design details and furnish equipment when so altered without reference to illustrations or specifications used. Fisher Engineering or the vehicle manufacturer may require or recommend optional equipment for spreaders. Do not exceed vehicle ratings with a spreader. Fisher Engineering offers a limited warranty for all spreaders and accessories. See separately printed page for this important information. The following are registered (®) or unregistered (™) trademarks of Douglas Dynamics, LLC: FISHER®, STEEL-CASTER™.

**Printed in U.S.A.**