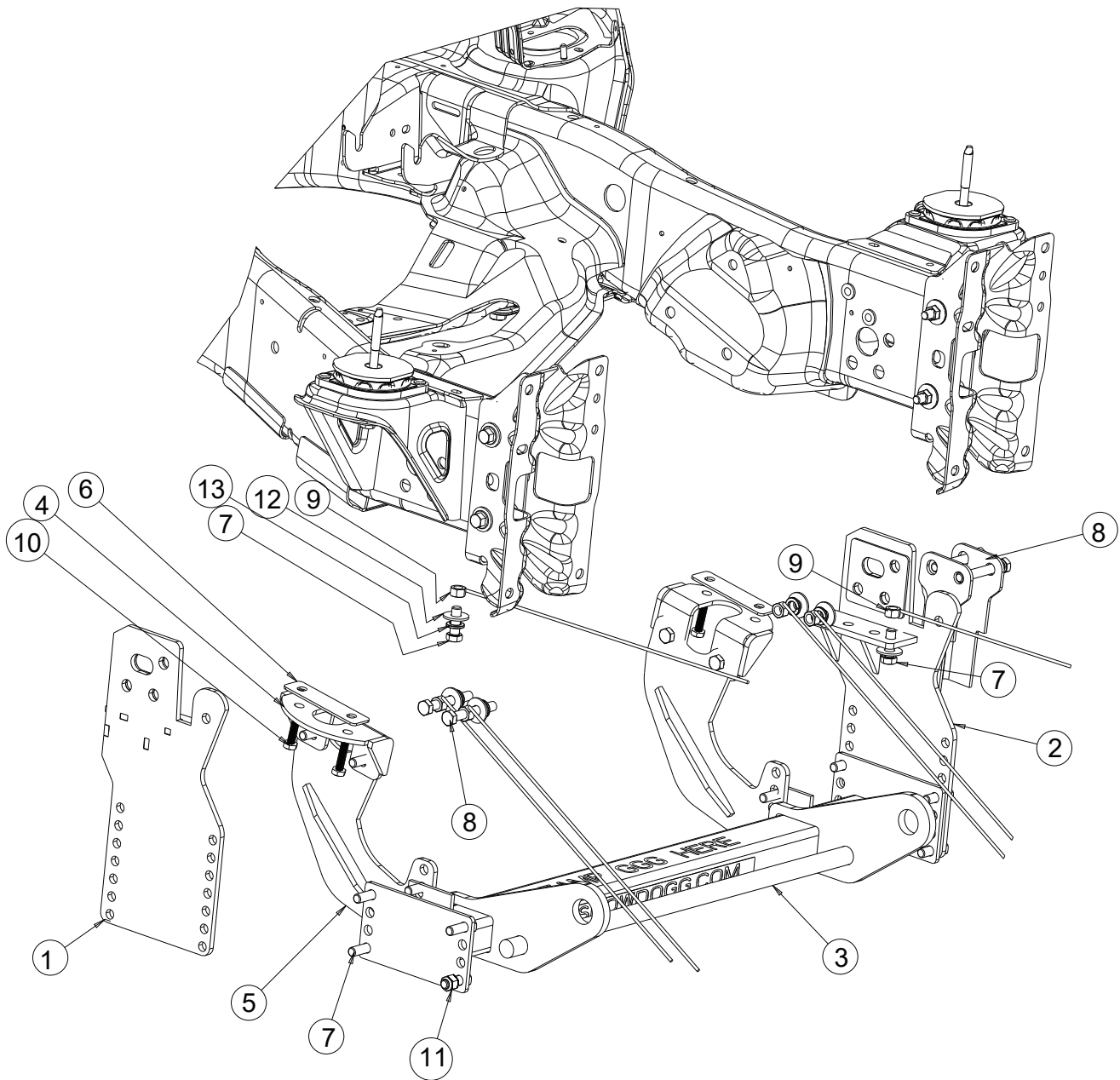




SnowDogg® Snowplow

TRUCK MOUNT INSTALLATION MANUAL

16062290
DODGE RAM 2019+ 2500/3500



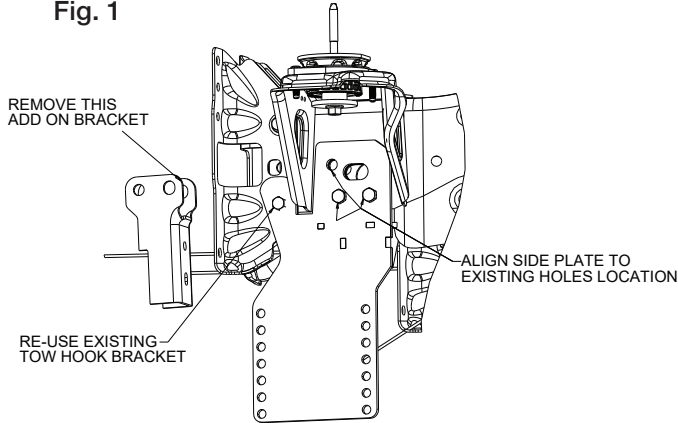
Bill of Materials

| ITEM | PART NO. | QTY. | DESCRIPTION |
|------|----------|------|--------------------------------------|
| 1 | 16062291 | 1 | SIDEPLATE, WELD, 19 RAM 2500, PS |
| 2 | 16062292 | 1 | SIDEPLATE, WELD, 19 RAM 2500, DS |
| 3 | 16062279 | 1 | PUSHBAR, RAM 13+, W/ MID TAB, HD |
| 4 | 16062293 | 2 | BRACKET, SWAYBAR ATTACH |
| 5 | 16062294 | 2 | REAR BRACE, ARM, 19 RAM 2500 |
| 6 | 3038493 | 2 | SPACER, SWAY BAR, RAM 2500 |
| 7 | 3006202 | 18 | SCREW, HEX HD-1/2-13 X 1-1/2 GR 8 ZC |

| ITEM | PART NO. | QTY. | DESCRIPTION |
|------|--------------|------|------------------------------------|
| 8 | 3005140 | 4 | SCREW, HH1/2-13 x 3.5, GR 5 ZN |
| 9 | 3011523 | 6 | NUT, HEX, 1/2-13 W/HANDLE, GR8 |
| 10 | 3035677 | 4 | SCREW, M10 X 1.5MM X 45MM, ZN 10.9 |
| 11 | 3002397 | 16 | LOCKNUT, HEX NYLOCK, 1/2-13 ZN, G8 |
| 12 | FWF050138014 | 6 | WASHER, FLAT, 1/2" USS, ZN |
| 13 | FWL050088013 | 6 | WASHER, LOCK - 1/2 SPLIT ZN |

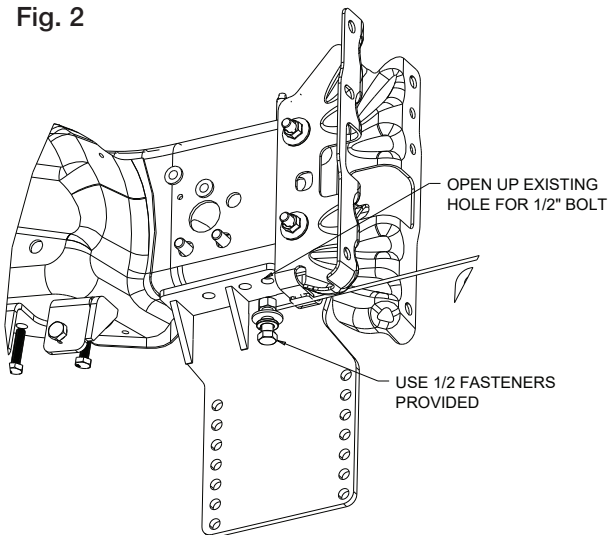
1. It is recommended to remove the bumper for this installation.
2. Remove the two Add-On Bracket bolts and one lower-front bumper bolt and install the DS Sideplate (2) in its place. Use longer bolts if existing bolts are too short. Secure these bolts with the proper size nuts required. Add On Bracket will not be re-used.

Fig. 1



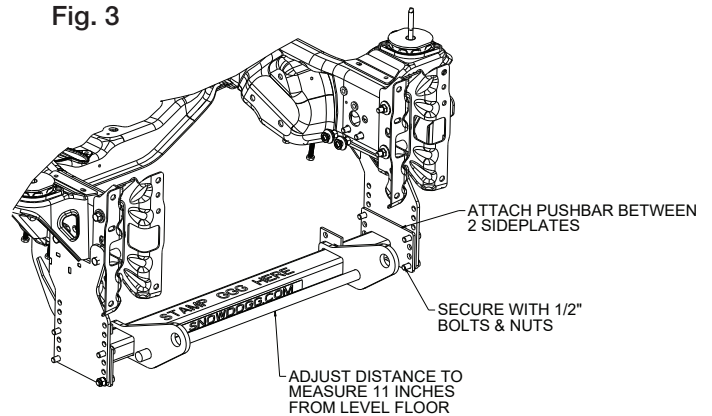
3. At the bottom of the sideplate, mark and drill open one hole from the frame and install one 1/2" bolt and nut. A nut on a stick is provided to help maneuver the bolt alignment. This stick may have to be bent and twisted in order to match the holes you just drilled.

Fig. 2



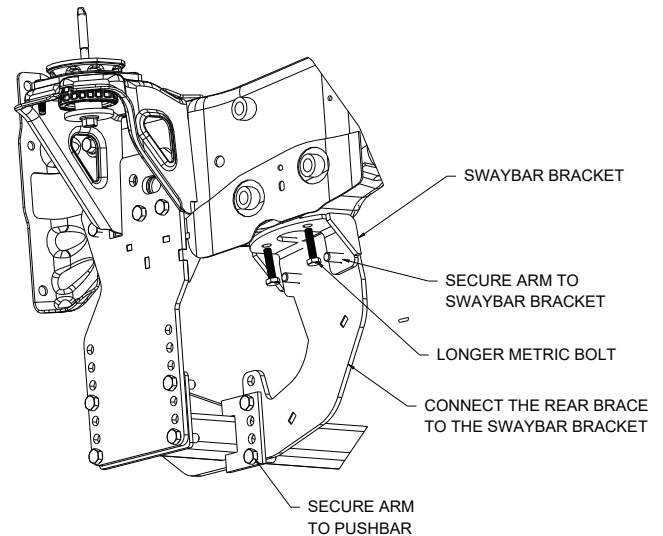
4. Repeat step 2-3 for the passenger side Sideplate (1).
5. Install the Pushbar (3) onto the two Sideplate (1,2) installed earlier using 8 bolts (7) and nuts (11) provided. Measure the Pushbar to about 11 inches from the level Floor (see Fig. 3).

Fig. 3






6. Temporarily, lower the swaybar from the bottom of the truck. Install the Swaybar Bracket (4) and re-attach the swaybar into place like a sandwich. Make sure to insert the Swaybar Spacer (6) up against the rubber toward the frame. Secure it with two new metric bolts (10). Connect the Rear Brace (5) to the Pushbar (3) and the Swaybar Bracket (4). Loosely, secure them together with four 1/2" fasteners.

Fig. 4



7. Repeat Step number 6 for the PS Rear Brace Arm (4).
8. Torque all fasteners as shown in the chart. Check and re-torque all fasteners after 5 hours of usage to ensure safe plow operation. Ensure all coolant lines and wires are clear from moving or hot components.

| Recommended Fastener Torque Chart (ft.-lb.) | | | |
|--|---|---|--|
| Size |  SAE Grade 2 |  SAE Grade 5 |  SAE Grade 8 |
| 1/4-20 | 6 | 9 | 13 |
| 5/16-18 | 11 | 18 | 28 |
| 3/8-16 | 19 | 31 | 46 |
| 3/8-24 | 24 | 46 | 68 |
| 7/16-14 | 30 | 50 | 75 |
| 1/2-13 | 45 | 75 | 115 |
| 9/16-12 | 66 | 110 | 165 |
| 5/8-11 | 93 | 150 | 225 |
| 3/4-10 | 150 | 250 | 370 |
| 7/8-9 | 150 | 378 | 591 |
| 1-8 | 220 | 583 | 893 |

| Metric Grade 8.8 (ft.-lb.) | | | |
|-----------------------------------|--------|------|--------|
| Size | Torque | Size | Torque |
| M6 | 7 | M12 | 60 |
| M8 | 17 | M14 | 95 |
| M10 | 35 | M16 | 155 |

These torque values apply to fasteners except those noted in the instruction.

WARNING

- DO NOT under any circumstances disable, remove or relocate any sensors or components related to the operation of the air bags.
- Always follow the vehicle manufacturers' recommendations relating to snowplow installation.
- To comply with Federal Regulations and to assure a safe vehicle, the Front Gross Axle Weight Rating (FGAWR), Rear Gross Axle Weight Rating (RGAWR), and the Gross Vehicle Weight Rating (GAWR) must not be exceeded at any time.
- Due to the variety of equipment that can be installed on this vehicle, it is necessary to verify that the Front Gross Axle Weight Rating (FGAWR), Rear Gross Axle Weight Rating (RGAWR), and the Gross Vehicle Weight Rating (GAWR) are not exceeded at any time. This may require weighing the vehicle and adding ballast as necessary. It may also limit payload capacity of the vehicle. It is the operator's responsibility to verify that these ratings are not exceeded.

CAUTION

- Read all instructions prior to assembly
- It is critical that all fasteners be properly torqued for safe plow operation – see chart above.
- Fasteners should be retorqued after 5-8 hours of plow use

FULL ONE-YEAR WARRANTY

Manufacturer will repair, or at manufacturer's discretion will replace any part of this snowplow which proves to be defective in workmanship or material under normal use for a period of one year from the date of delivery to the original purchaser. Any cost incurred in returning the product to the supplier is the responsibility of the consumer.

EXCLUSIONS

Manufacturer shall not be liable for special, incidental, or consequential damages, or for damages resulting from lack of necessary maintenance, from misuse, abuse, acts of God, or alteration of the product. Some states do not allow the exclusion or limitation of incidental or consequential damages, so the above limitation or exclusion may not apply to you.