

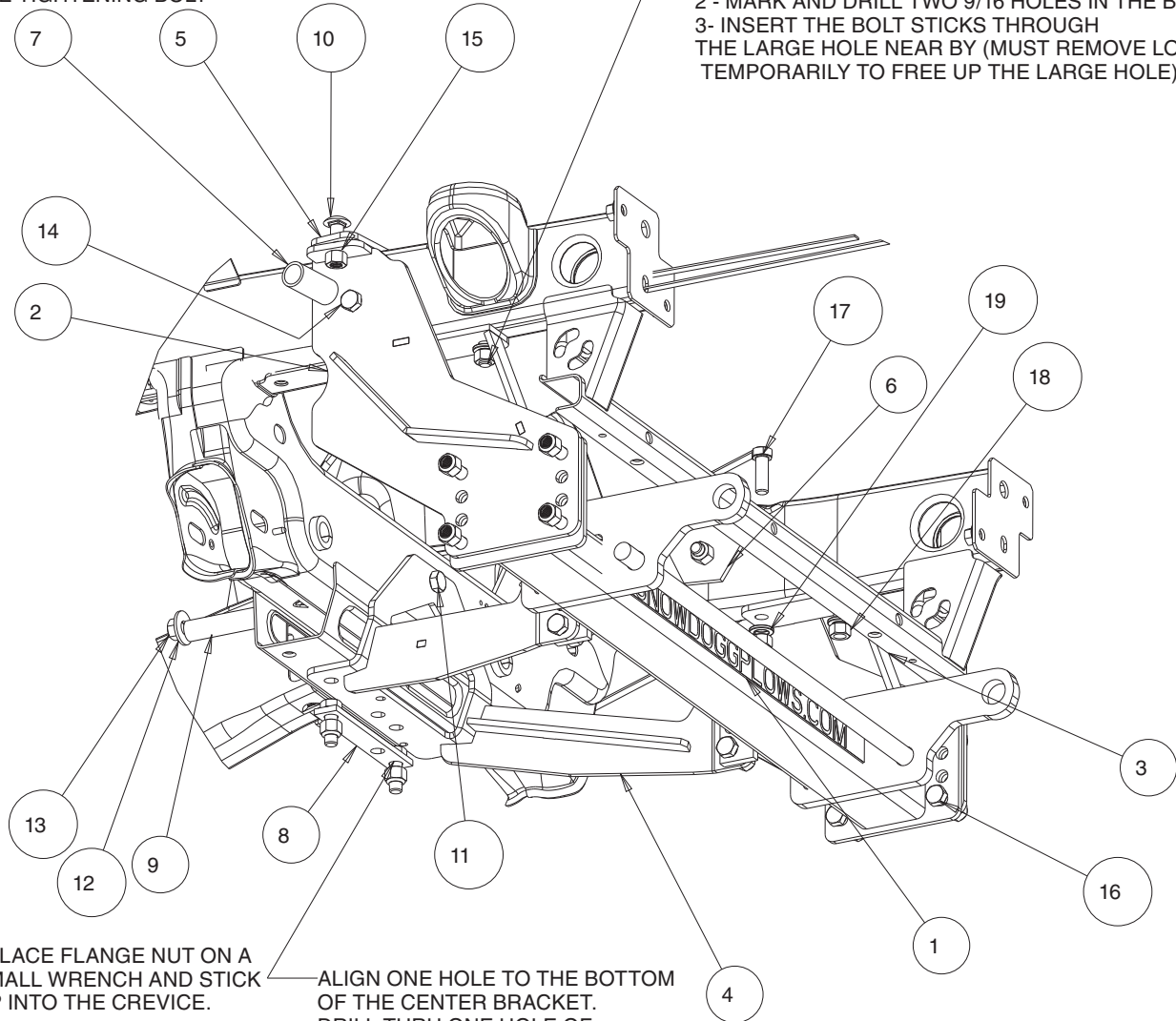
MD MOUNT KIT 16062335 CHEVY COLORADO, CANYON, 2014+



SnowDogg® Snowplow

TRUCK MOUNT INSTALLATION MANUAL

INSERT TUBE INTO FRAME BEFORE TIGHTENING BOLT



1- POSITION THE SIDE PLATE INTO POSITION SHOWN, WITH ONE LONG BOLT HOLDING IT TOGETHER.
 2 - MARK AND DRILL TWO 9/16 HOLES IN THE BOTTOM
 3- INSERT THE BOLT STICKS THROUGH THE LARGE HOLE NEAR BY (MUST REMOVE LONG BOLT TEMPORARILY TO FREE UP THE LARGE HOLE).

- PLACE FLANGE NUT ON A SMALL WRENCH AND STICK UP INTO THE CREVICE.

- INSERT BOLT TUBING WITH LONG BOLT PRIOR TO TIGHTENING NUT WITH WASHER.

ALIGN ONE HOLE TO THE BOTTOM OF THE CENTER BRACKET. DRILL THRU ONE HOLE OF THE TRUCK'S UNDER FRAME

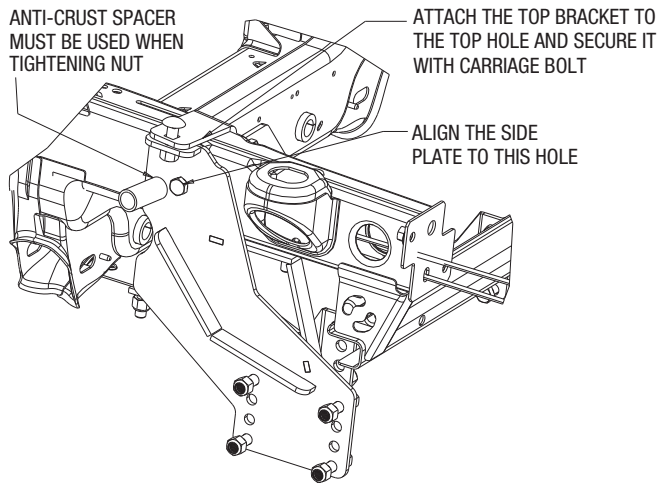
Parts List

ITEM	PART NO.	QTY.	DESCRIPTION
1	16062329	1	PUSH BAR, CHEVY COLO/CANYON Z71
2	16062336	1	SIDE PLATE, WLENT, PS 15-RADO
3	16062337	1	SIDE PLATE, WLENT, dS 15-RADO
4	16062338	1	CTR BRACKET, COLORADO
5	3028452	1	ANGLE, BACKING-PS
6	3028453	1	ANGLE, BACKING-DS
7	3029863	2	TUBE, ANTI-CRUSH SPACER
8	3028454	1	STIFFENER, PLATE
9	3017702	1	SPACER, TUBING 3.45 LONG
10	3012580	2	BOLT, CARRIAGE-1/2-13 X 1.25 GR 5 Z

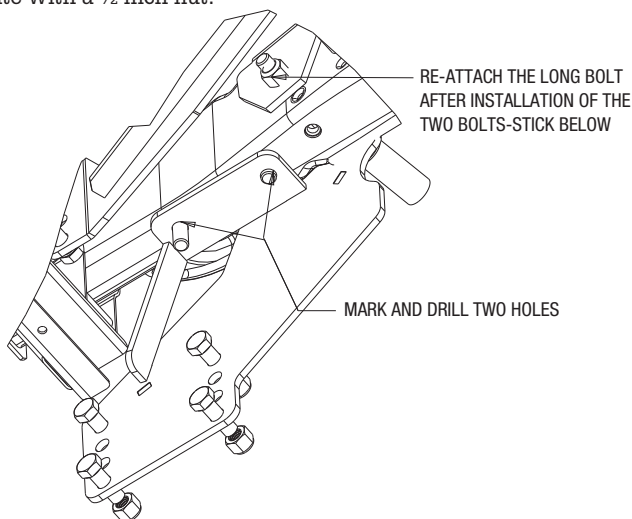
ITEM	PART NO.	QTY.	DESCRIPTION
11	FCS050013450	1	SCREW, HEX HEAD CAP, 1/2-13 X 4-1/2, GR 5,
12	FWF050138014	1	WASHER, FLAT, 1/2" USS, ZN
13	3001523	1	NUT, HX FLNG-1/2-13 SST
14	FCS050013400Z	2	SCREW, HEX HEAD CAP 1/2-13 X 4.00 GR 5 ZN
15	3002397	18	LOCKNUT, HEX NYLOCK, 1/2-13 ZN, G8
16	3006202	14	SCREW, HEX HD - 1/2-13 X 1-1/2 GR 8 ZC
17	16801004	4	SCREW, HEX HD, 1/2-13x1-1/2 GR 5 W/HDL
18	3006201	4	NUT, 1/2-13, ZN
19	FWL050088013	4	WASHER, SPLIT 1/2 ZN

1. It is not necessary to remove the bumper for this vehicle installation. The thin plastic valence will need to be notched for the pushbar to position correctly onto the mounting.

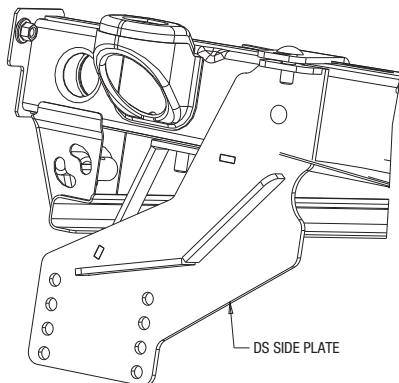
2. On the Passenger side, position the PS side plate onto the frame. Align the big 1 inch hole through side-hole to the Side Plate hole, and secure it with a long bolt. Do not tighten it yet.



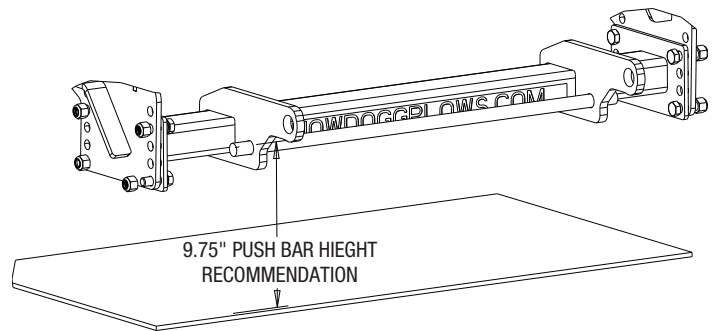
3. From the bottom of the frame, mark the two 1/2 holes with a marking tool. Drill through the hole for the 1/2 inch bolt to go through.
4. Remove the long bolt installed earlier to free up the one inch hole on the side of the frame. Insert the two bolt-sticks through the big hole and through the two newly drilled holes. Secure it with the two 1/2 inch nuts. Finally, secure the carriage bolt on top of the side plate with a 1/2 inch nut.



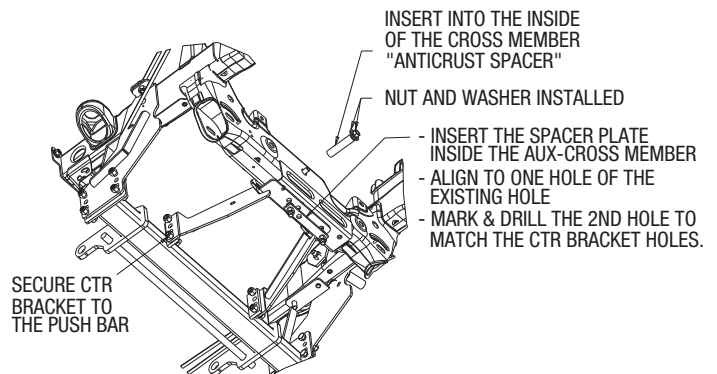
5. Repeat Step 2-4 for the installation of the DS Side-plate.



6. Install the pushbar between the two side plates just installed. Secure it with eight 1/2 bolts and nuts provided. Adjust the pushbar up and down. The center line of the push bar Cross Pin should be approximately 9.75" from the level ground. It is necessary to notch/ remove the plastic air damp to acquire a desired height.






7. Install the center bracket onto the pushbar aligning them to the 4 holes on the bracket. Secure the bracket onto the pushbar with four 1/2" bolts and nuts.



8. On the cross-member of the truck, Insert the spacer to match the existing hole on the aux-cross member. Mark and drill the 2nd hole to match the Center bracket location. Secure it with two 1/2" bolts and nuts.

9. To the back of the center bracket, insert the long bolt through the large existing hole. An anti-crush spacer and a washer are necessary to secure this bracket onto the crossmeber.

10. Torque all fasteners as shown in the chart. Check and re-torque all fasteners after 5 hours of usage to ensure safe plow operation. Ensure all coolant lines and wires are clear from moving or hot components. Modification is necessary for re-installation of the mud-guard.

Recommended Fastener Torque Chart (ft.-lb.)			
Size	 SAE Grade 2	 SAE Grade 5	 SAE Grade 8
1/4-20	6	9	13
5/16-18	11	18	28
3/8-16	19	31	46
3/8-24	24	46	68
7/16-14	30	50	75
1/2-13	45	75	115
9/16-12	66	110	165
5/8-11	93	150	225
3/4-10	150	250	370
7/8-9	150	378	591
1-8	220	583	893

Metric Grade 8.8 (ft.-lb.)			
Size	Torque	Size	Torque
M6	7	M12	60
M8	17	M14	95
M10	35	M16	155

These torque values apply to fasteners except those noted in the instruction.

WARNING

- DO NOT under any circumstances disable, remove or relocate any sensors or components related to the operation of the air bags.
- Always follow the vehicle manufacturers' recommendations relating to snowplow installation.
- To comply with Federal Regulations and to assure a safe vehicle, the Front Gross Axle Weight Rating (FGAWR), Rear Gross Axle Weight Rating (RGAWR), and the Gross Vehicle Weight Rating (GAWR) must not be exceeded at any time.
- Due to the variety of equipment that can be installed on this vehicle, it is necessary to verify that the Front Gross Axle Weight Rating (FGAWR), Rear Gross Axle Weight Rating (RGAWR), and the Gross Vehicle Weight Rating (GAWR) are not exceeded at any time. This may require weighing the vehicle and adding ballast as necessary. It may also limit payload capacity of the vehicle. It is the operator's responsibility to verify that these ratings are not exceeded.

CAUTION

- Read all instructions prior to assembly
- It is critical that all fasteners be properly torqued for safe plow operation – see chart above.
- Fasteners should be retorqued after 5-8 hours of plow use

FULL ONE-YEAR WARRANTY

Manufacturer will repair, or at manufacturer's discretion will replace any part of this snowplow which proves to be defective in workmanship or material under normal use for a period of one year from the date of delivery to the original purchaser. Any cost incurred in returning the product to the supplier is the responsibility of the consumer.

EXCLUSIONS

Manufacturer shall not be liable for special, incidental, or consequential damages, or for damages resulting from lack of necessary maintenance, from misuse, abuse, acts of God, or alteration of the product. Some states do not allow the exclusion or limitation of incidental or consequential damages, so the above limitation or exclusion may not apply to you.