

MD MOUNT KIT

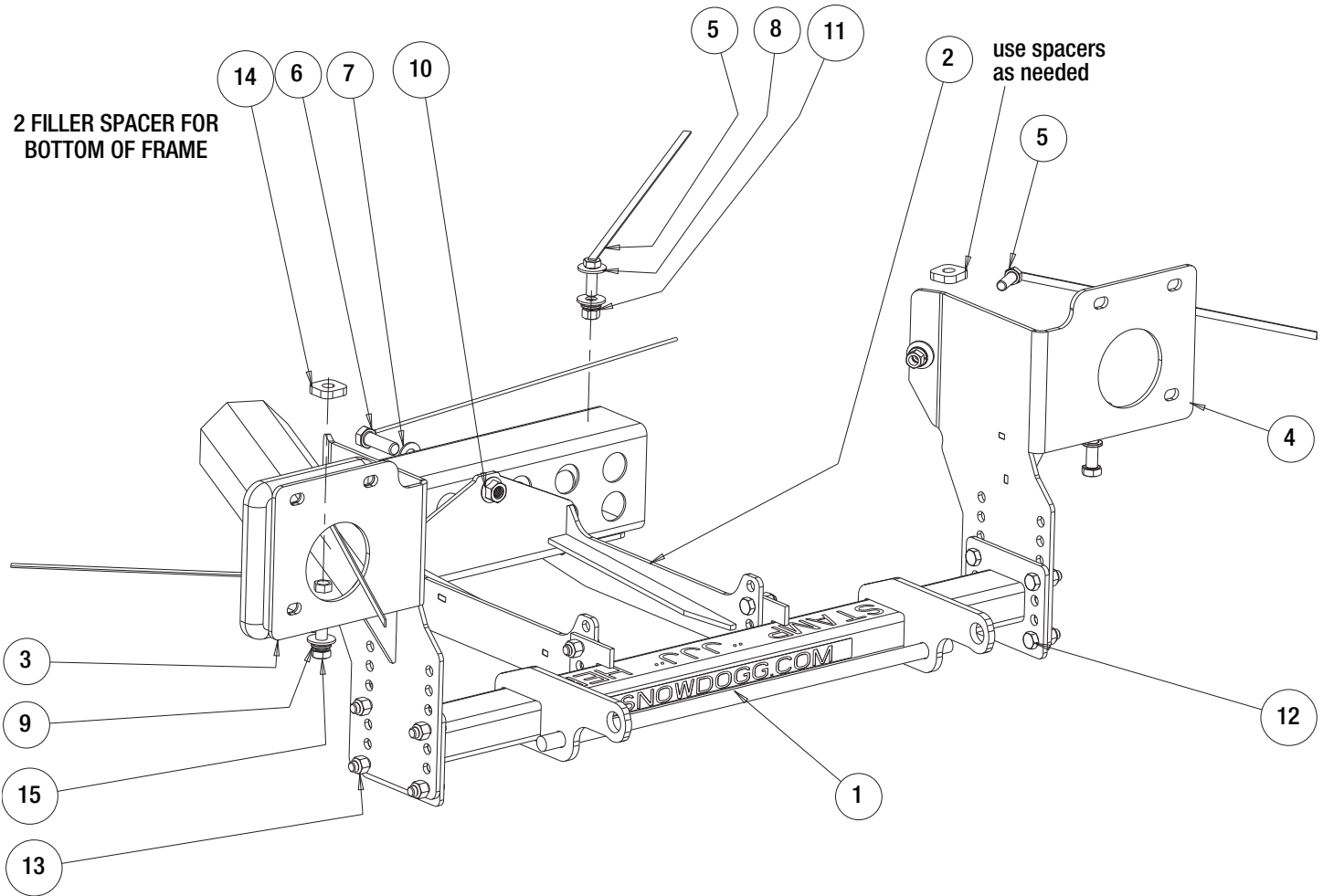
16063155

DODGE RAM 1500 '19+



SnowDogg™ Snowplow

TRUCK MOUNT INSTALLATION MANUAL



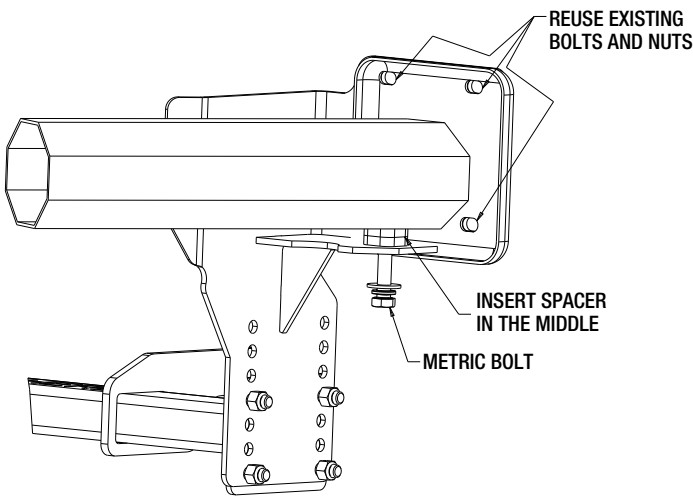
Bill of Materials

ITEM	PART NO.	QTY.	DESCRIPTION
1	16063158	1	PUSH BAR, 19 RAM 1500
2	16063159	1	CTR BRACKET, 19 RAM 1500
3	16063156	1	SIDEPLATE, 19 RAM 1500, PS
4	16063157	1	SIDEPLATE, 19 RAM 1500, DS
5	16801004	4	SCREW, HEX HD, 1/2-13x1-1/2 GR 5 W/ HDL
6	16801006	1	SCREW, HEX HD, 5/8-11x2 GR 5 W/HDL
7	FWF063131095	1	WASHER, 5/8 SAE FLAT ZN
8	FWF050138014	8	WASHER, FLAT, 1/2" USS, ZN

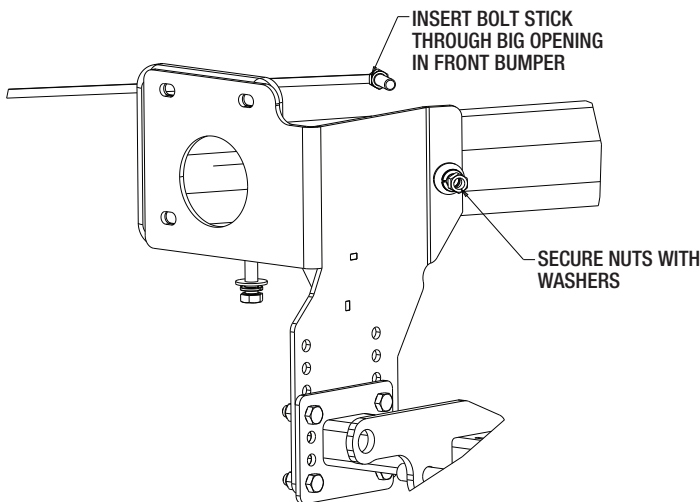
ITEM	PART NO.	QTY.	DESCRIPTION
9	FWL050088013	6	WASHER, LOCK - 1/2 SPLIT ZN
10	3038931	1	NUT, HEX, SERR, FLGE, 5/8-11, G8, ZN
11	3006201	4	NUT, 1/2-13 HEX GR. 8 ZP
12	3006202	12	SCREW, HEX HD - 1/2-13 X 1-1/2 GR 8 ZC
13	3002397	12	LOCKNUT, HEX NYLOCK, 1/2-13 ZN, G8
14	3040411	6	SPACER, RAM 1500, 19+
15	3033912	2	SCREW, HHC, M14X2 X 50, CL10.9, YEL PLTD

INSTRUCTIONS

1. Remove the bumper and bumper fasteners. Set aside for later reinstallation. Bumper fasteners will be used for this installation.
2. Remove the Motorized Air Dam underneath the bumper. It will NOT be reinstalled for plowing purposes.
3. Hold the PS Sideplate (3) up against the PS frame of the truck, aligning it to the three front holes of the Truck's Front Flange. The two bumper bolts will hold this bracket later when the bumper is re-installed. Secure the bracket with the existing metric bolt in the bottom (15). Two additional filler spacers are needed between the bottom of this bracket and the truck frame.

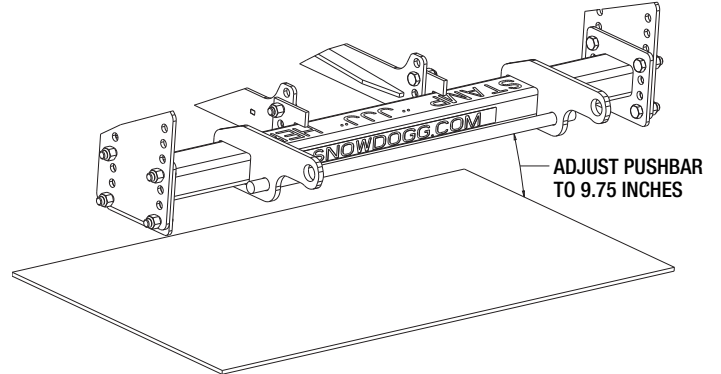


4. On the inside of the frame, drill the additional hole through the single wall. Install the bolt stick through this new hole and secure it with the 1/2" fasteners below. It is important not to tighten any bolts and nuts until all mounting parts are secure to the truck. Use one additional spacer (14) here as needed.

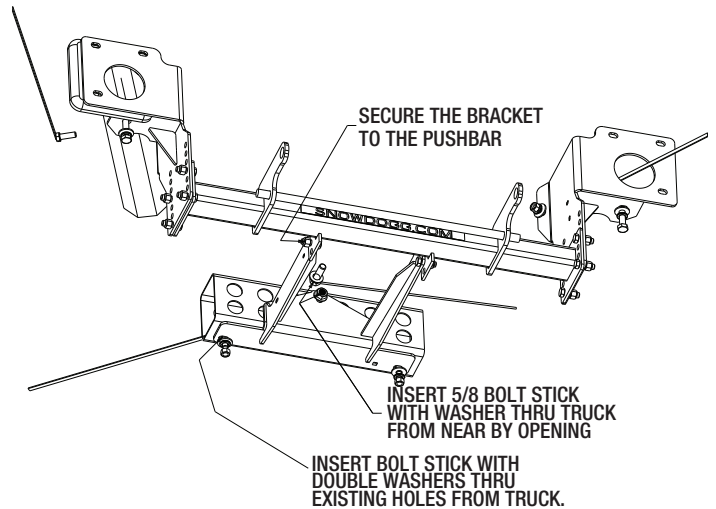


5. Repeat step number 2 and 3 for the Driver Side (4) Sideplate.




6. Install the Pushbar (1) between the two Sideplates using eight 1/2-13x1.5" bolts (12) and eight nuts (13). The center line of the push bar Cross Pin should be approximately 9.75" from the level ground. It may be necessary to notch the bumper to clear room for the pushbar height adjustment.



7. Install the Center Bracket (2) onto the Pushbar (1) using four 1/2" bolts and nuts. Secure the back of the bracket onto the Cross Member of the truck with the 1/2" fasteners on the left and right side of the frame. Install the remainder center hole with the 5/8" bolt stick with washer. Secure it with the flange nut (7).



8. Torque all fasteners as shown in the chart. Check and re-torque all fasteners after 5 hours of usage to ensure safe plow operation. Ensure all coolant lines and wires are clear from moving or hot components.

Recommended Fastener Torque Chart (ft.-lb.)			
Size	 SAE Grade 2	 SAE Grade 5	 SAE Grade 8
1/4-20	6	9	13
5/16-18	11	18	28
3/8-16	19	31	46
3/8-24	24	46	68
7/16-14	30	50	75
1/2-13	45	75	115
9/16-12	66	110	165
5/8-11	93	150	225
3/4-10	150	250	370
7/8-9	150	378	591
1-8	220	583	893
Metric Grade 8.8 (ft.-lb.)			
Size	Torque	Size	Torque
M6	7	M12	60
M8	17	M14	95
M10	35	M16	155
These torque values apply to fasteners except those noted in the instruction.			

WARNING

- DO NOT under any circumstances disable, remove or relocate any sensors or components related to the operation of the air bags.
- Always follow the vehicle manufacturers' recommendations relating to snowplow installation.
- To comply with Federal Regulations and to assure a safe vehicle, the Front Gross Axle Weight Rating (FGAWR), Rear Gross Axle Weight Rating (RGAWR), and the Gross Vehicle Weight Rating (GAWR) must not be exceeded at any time.
- Due to the variety of equipment that can be installed on this vehicle, it is necessary to verify that the Front Gross Axle Weight Rating (FGAWR), Rear Gross Axle Weight Rating (RGAWR), and the Gross Vehicle Weight Rating (GAWR) are not exceeded at any time. This may require weighing the vehicle and adding ballast as necessary. It may also limit payload capacity of the vehicle. It is the operator's responsibility to verify that these ratings are not exceeded.

CAUTION

- Read all instructions prior to assembly
- It is critical that all fasteners be properly torqued for safe plow operation – see chart above.
- Fasteners should be retorqued after 5-8 hours of plow use

FULL ONE-YEAR WARRANTY

Manufacturer will repair, or at manufacturer's discretion will replace any part of this snowplow which proves to be defective in workmanship or material under normal use for a period of one year from the date of delivery to the original purchaser. Any cost incurred in returning the product to the supplier is the responsibility of the consumer.

EXCLUSIONS

Manufacturer shall not be liable for special, incidental, or consequential damages, or for damages resulting from lack of necessary maintenance, from misuse, abuse, acts of God, or alteration of the product. Some states do not allow the exclusion or limitation of incidental or consequential damages, so the above limitation or exclusion may not apply to you.