

**INSTALLATION INSTRUCTIONS**  
**NOTE:** Installation of this mounting requires cutting of front air dam to allow mounting clearance.

- A. Remove front bumper, with air dam attached, and bumper brackets. The brackets will not be re-used, but retain bumper nuts and bolts.
- B. Attach lift frame (1) to end of vehicle frame using 5/8 x 1-1/2 bolts (13), 5/8 flatwashers (18) and 5/8 locknuts (16) inserted in top two holes of lift frame (1) and into corresponding holes of vehicle frame.
- C. Place R.H. and L.H. side plates (4 & 5) against vehicle frame and attach using 5/8 x 1-1/2 bolts (13), 5/8 flatwashers (18) and 5/8 locknuts (16).
- D. Fasten sideplates (4 & 5) to bottom hole in lift frame (1) using 5/8 x 1-1/2 bolt (13) and 5/8 locknut (16).
- E. Hold clevis frame (8) between the two sideplates (4 & 5) and insert 5/8 x 1-1/2 bolt (13) through holes in underframe (4 & 5) and clevis frame (8). Secure with 5/8 locknut (16).
- F. Pull forward on lift frame (1) while pushing back on clevis frame (8) to remove slack in bolt holes. Tighten all nuts to proper torque as shown in torque chart.

- G. Attach light brackets (6 & 7) to weld nuts in lift frame (1) using 3/8" x 1-1/4" bolts (12) and 3/8" lockwashers (17). Install headlights per separate instructions. Be certain that back of headlights do not interfere with opening and closing of vehicle hood.
- H. Install Electro-Touch wiring system per separate instructions.
- I. Re-install bumper using the original nuts and bolts. **IMPORTANT:** Cut notch in front air dam so it will fit around support arm socket on lift frame.
- J. Attach Electro-Touch unit to support arm (2) using 5/8" x 3-1/2" bolt (15) and 5/8" locknut (14) and to lift arm (3) using 5/8" x 2-3/4" bolt (14) and 5/8" locknut (16). Secure this assembly to lift frame (1) using quick-disconnect pins (19) and hair pin cotter (20).

- K. Attach pivot bar (9) to moldboard (33) using pivot bolts (25) coated with chassis lubricant, and 5/8" locknut (24).
- L. Attach trip springs (11) to pivot bar (9) and moldboard (33) with eye bolts (23) and locknuts (28). Flat end of eye bolt (23) must be in a vertical position, as shown in figure 1, to hinge properly when moldboard (33) trips. Proper tension is attained when trip spring (11) coils begin to separate and then tightening top locknut (28) four additional turns. Tighten bottom locknut (28). Refer to figure 1.
- M. Assemble A-frame (10) to pivot bar (9) using king bolt (26) and 5/8" locknut (24). Grease king bolt (26) prior to installation.
- N. Install fitting end of power angling rams to A-frame (10) using 5/8" x 3-1/4" bolt and 5/8" locknut. (Packed in hardware bag 08363 in Electro-Touch carton). Attach piston end of ram to pivot bar (9) with 5/8" x 4-1/2" bolt (27) and 5/8" locknut (24).
- O. Straighten end of plow markers (29) so they will be vertical after installation. Attach using 1/4" x 1" bolt (31), clamp (30) and 1/4" locknut (32).

- P. Secure the moldboard-pivot bar-A-frame assembly to vehicle at clevis frame (8) using hinge pins (21) and spring clips (22). Attach lift chain to lift arm (3) allowing sufficient slack to allow moldboard to follow ground contours.

**GENERAL INFORMATION**  
**CAUTION:** Always disconnect battery before beginning installation.  
**DO NOT** burn holes or weld vehicle frame. This may cause frame failure.  
 After first use retighten all mounting bolt connections to the specified torque. All mounting bolt connections to be checked periodically for tightness.  
 Check contents against the parts list to determine all are correct and included; and also to familiarize yourself with them.  
 Locknuts are furnished. **DO NOT** tighten bolts and nuts until installation is complete (unless otherwise specified) then be sure to tighten all attaching parts per specified torque chart.



www.storksplows.com

Form No. 1-592R2  
 September 1987

**PARTS & INSTALLATION INSTRUCTIONS**  
**MEYER SNOW PLOW MOUNTING**  
**for FORD RANGER and BRONCO II 4X4 MODELS**  
**VEHICLE MUST COMPLY WITH VEHICLE MANUFACTURER'S SPECIFICATIONS FOR SNOW PLOW APPLICATION.**

**PARTS LIST**

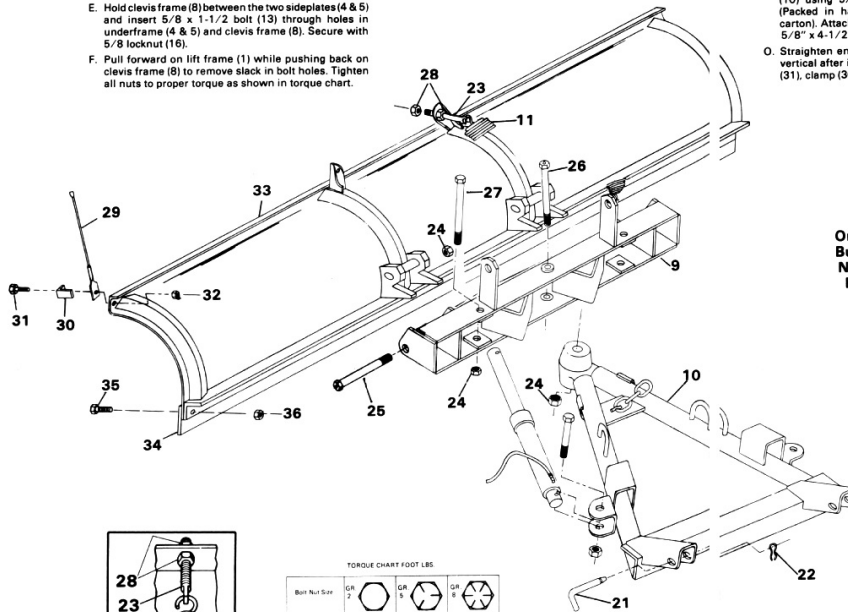
Item	Part Number	Quantity	Description
1	18211	1	Mounting Carton
2	10824	1	• Lift Frame
3	10905	1	• Support Arm
4	10814	1	• Lift Arm
5	10866	1	• R.H. Side Plate Weldment
6	10897	1	• L.H. Side Plate Weldment
7	10715	1	• Light Bracket, R.H.
8	10715	1	• Light Bracket, L.H.
9	10820	1	• Clevis Frame
10	12984	1	• Pivot Bar
11	13594	1	• A-frame
12	12978	2	• Trip Spring
13	08513	1	• Hardware Bag - Mounting
14	20096	6	• Bolt H 3/8-16 x 1-1/4 Gr. 5
15	20139	14	• Bolt H 5/8-11 x 1-1/2 Gr. 5
16	20144	1	• Bolt H 5/8-11 x 2-3/4
17	20147	1	• Bolt H 5/8-11 x 3-1/2
18	20309	16	• Locknut 5/8-11
19	20327	6	• Lockwasher 3/8
20	20357	8	• Flatwasher 5/8
21	10538	2	• Quick Disconnect Pin
22	21984	2	• Hair Pin Cotter
23	08511	1	• Snow Plow Hardware Bag
24	10538	2	• Hinge Pin
25	21984	2	• Hair Pin Cotter
26	12150	2	• Eye Bolt
27	20309	5	• Locknut 5/8-11
28	13598	2	• Pivot Bolt
29	13581	1	• King Bolt
30	20150	2	• Bolt 5/8-11 x 4-1/2 Gr. 5
31	20318	4	• Nut, Flatlock, 5/8-11
32	09816	1	• Snow Plow Marker Kit
33	08201	2	• Snow Plow Marker Assy.
34	12816	2	• Clamps
35	20905	1	• Bolt H 1/4-20 x 1
36	20312	2	• Locknut 1/4-20
33	09102	1	• KIT, Electrical Disconnect
34	09100	1	• Moldboard Assy, Two-Meter
35	21943	6	• Cutting Edge 78"
36	20307	6	• Bolt C 1/2-13 x 1-3/4
			• Locknut 1/2-13

Parts indented are included in the carton, bag or assembly under which they are indented.  
 When ordering parts furnish Part No., Name and Description. Also furnish Vehicle Model and Year, Type of Hydraulic Unit and Moldboard Size.

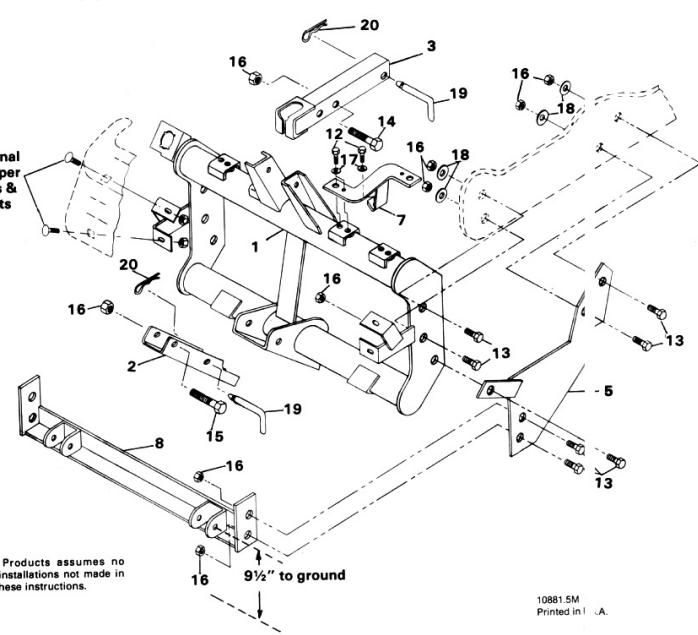
Meyer Products reserves the right, under its continuing product improvement program, to change construction or design details, specifications and prices without notice or without incurring any obligation.



18513 Euclid Ave., Cleveland, Ohio 44112-1084  
 Phone 486-1313 (Area Code 216)



Original Bumper Nuts & Bolts



**NOTICE:** Meyer Products assumes no responsibility for installations not made in accordance with these instructions.

9 1/2" to ground

10881.5M  
 Printed in U.S.A.

**TORQUE CHART FOOT LBS**

Bolt Nut Size	GR 2	GR 5	GR 8
1/4 - 20	4 - 5	20 - 29	60 - 65
5/16 - 18	8 - 11	42 - 46	80 - 100
3/8 - 16	17 - 20	64 - 72	100 - 120
7/16 - 14		107 - 141	170 - 190
1/2 - 13		227 - 281	
9/8 - 11			
3/4 - 10			

