

ANGLE - SPRING RETURN TO CENTER FROM BOTH POSITIONS

To IGNITION Switch
Accessory Side

USE 3/16
DRILL

BLACK

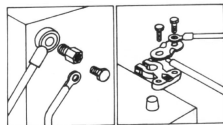


Figure 1

Figure 2

ADDITIONAL BATTERY CONNECTIONS:

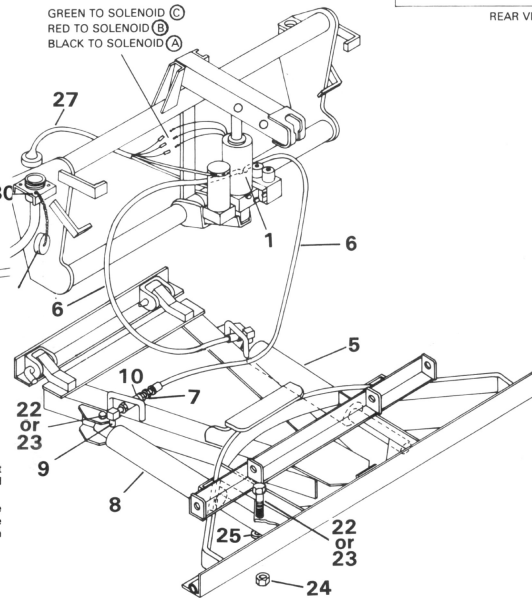
- When attaching cables to battery with side post terminals use M.P.I. adapter Part #21976 and attach as shown in Figure 1.
- Fig. 2 illustrates the method of using a repair type terminal connector (not furnished) in place of the spring type connector which is original equipment on some vehicles.

NOTES:

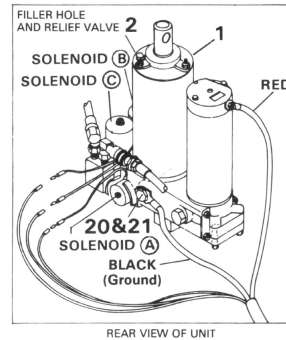
For Electro-Touch™ Unit maintenance, refer to Owner's Manual. Overhaul and service information is covered on separate instructions. Safety precautions should be used when the Electro-Touch™ is in OPERATION and plow is in RAISED position. LOWER the plow to the ground when the vehicle is PARKED.

FOLLOW THESE INSTRUCTIONS EXPLICITLY! WARRANTY DOES NOT APPLY TO A MEYER PRODUCT WHICH HAS BEEN NEGLIGENTLY OR IMPROPERLY ASSEMBLED OR INSTALLED.

When ordering parts, furnish part number, name and description and type of hydraulic unit.



GREEN TO SOLENOID (B)
RED TO SOLENOID (B)
BLACK TO SOLENOID (A)



REAR VIEW OF UNIT

Meyer
SNOW PLOWS

PARTS & INSTALLATION INSTRUCTIONS

E-47 & E-47H

MEYER ELECTRO-TOUCH™

LO-LINE MOUNTING

PARTS LIST

Item	E-47	E-47H	Description
1	15610	15510	1 LIFT and P.A. ASSY (COMPLETE)
2	08473	08473	1 Relief Valve Kit
3	15478	15478	1 Harness & Fuse Assy
4	15370	15370	1 Starter Solenoid
5	07748	07756	1 Ram, L.H. w/Hose & Fittings
6	05810	05437	1 Ram
7	21886	21886	1 Hose, 1/4 x 45" w/90° Swivel
8	21948	21948	1 Male Half Quick Coupler
9	07748	07756	1 Ram, R.H. w/Fittings
10	21885	21885	1 Swivel Ell, 1/4 x 90°
11	21847	21847	1 Female Half Quick Coupler
12	05024	05024	1 Power Cable, 36"
13	05023	05023	1 Power Cable, 22"
14	15348	15348	1 HARDWARE BAG
15	21919	21919	1 Switch (Raise & Lower)
16	21918	21918	1 Switch (Angle)
17	15656	15656	1 Switch Bracket w/Decal
18	15375	15375	1 Handle - Yellow
19	15376	15376	1 Handle - Black
20	20841	20841	2 Screw, #12 x 1/2" Self-Tap
21	21832	21832	2 Bushing - Split
22	21388	21388	2 Screw, 1/4 x 1.4 x 3/4" Self-Tap
23	21502	21502	1 Bolt, H. 5/16-18 x 1/2" Gr. 2
24	20309	20309	1 Lockwasher, 5/16-18 Int. Tooth
25	08363	08364	1 HARDWARE BAG
26	20146	20146	4 Bolt H 5/8 - 11 x 3-1/4
27	15627	15627	1 Vehicle Disconnect End
28	20309	20309	4 Bolt H 5/8 - 11 x 3-1/2
29	20309	20309	4 Locknut 5/8 - 11
30	20387	20387	2 Flat Washer 5/8
31	08470	08470	1 Electrical Disconnect Kit w/Threaded Ends
32	15627	15627	1 Vehicle Disconnect End
33	15628	15628	1 Electro-Touch™ Disconnect End
34	15635	15635	1 Dual Cap
35	21919	21919	4 #6 - 32 x 1/2 Slotted Screws
36	21919	21919	4 #6 Flat Washers
37	21919	21919	4 #6 Stop Nut

Parts indented are included in Carton, Bag or Assembly under which they are indented.

POWER ANGLING CYLINDERS:

Power Angling Cylinders furnished with the Electro Touch™ have been factory filled with proper amount of fluid. If for any reason it is necessary to add fluid to Reservoir or to bleed the Power Angling Cylinders, proceed as follows:

- Remove Relief Valve (2) from Reservoir to add fluid during charging and bleeding.
- Temporarily loosen the Female Coupler (10) at the R.H. Cylinder and Hose (6) at the L.H. Cylinder. Base end of Cylinder must be higher than rod end, to enable trapped air to escape.
- Angle the Plow in both directions until fluid leaks out at both points in a steady flow.
- Retighten the Coupler (10) and Hose (6).

NOTE:
Proper fluid level is 1-1/2" below filler hole. It must be checked with lift arm fully retracted.

THE VEHICLE MUST BE EQUIPPED WITH A HEAVY-DUTY BATTERY OF 70 AMPS AND A HEAVY-DUTY ALTERNATOR OF 60 AMPS MINIMUM TO OBTAIN MAXIMUM PERFORMANCE.

INSTALLATION INSTRUCTIONS:

- CAUTION: Always disconnect battery prior to installation.
- Check contents against the parts list to determine if all are correct and included.
- Assemble Lift Assembly (1) to Lift Arm and Arm Support and install per mounting instructions. Lift Assembly (1) must be installed with Motor toward passenger side of vehicle. Use inner hole (as shown) for all snowplows up to 8.5 feet long. Use outer hole for 9' and 10' snowplows. Remove shipping plug from filler hole and install Relief Valve kit (2). Tighten to 100-125 in. lbs.
- Install Switches (12 & 13) with Switch Bracket (14) in suitable location on the dash panel.
- Install Starter Solenoid (4) on vehicle fender well. Connect Power Cable (11) from positive terminal of battery to the proper terminal on Starter Solenoid (4).
- Use Bushings (18) where Harness (3) is routed through firewall and radiator support panel. Requires 7/8" diameter hole. Be certain to route all wiring around hot or moving engine parts, and any sharp sheet metal. Protection must be provided to guard against wire damage at these points. All excess or loose wire must be neatly secured using wire ties. For weather protection, tape all electrical connections at front of vehicle.
- Connect the black lead from the Vehicle End of the Electrical Disconnect (26) to the negative terminal of the battery, and the red lead to the Starter Solenoid (4). Connect the three female plugs from the Wiring Harness (3) to their respective colors on this Disconnect. The Disconnect is mounted on the plate located on the Lift Frame. Attach the Chain for the Cap with one of the mounting screws (29).
- Attach the black wire from the Lift-Unit End of the Electrical Disconnect (27) to the grounding Bolt (20) on the Lift Unit (1). Be sure the Toothed Washer (21) is against the Lift Unit (1). Fasten the red wire to the Motor terminal bolt and the three colored wires to the matching wires from the Lift Unit (1).
- Operate snow plow through full range of functions. Check for bumper clearance when fully angled while in raised and lowered position. Make certain A-Frame stops contact Lift Frame before damage occurs to vehicle or Lift unit. Verify hose routing does not result in pinching or pulling of hose.

Meyer Products reserves the right, under its continuing product improvement program, to change construction or design details, specifications and prices without notice or without incurring any obligation.

4876M
Printed in U.S.A.

Meyer
PRODUCTS

18513 Euclid Ave. • Cleveland, Ohio 44112-1084
Phone 486-1313 (Area Code 216)