



SNO-WAY®

SNOW & ICE CONTROL EQUIPMENT

ASSEMBLY & INSTALLATION INSTRUCTIONS

**VEHICLE MOUNT KIT 99101344
AND
VEHICLE CENTER MEMBER 99101357**

TO FIT:
2019 & LATER CHEVY 4500-5500 (4x4)
2019 & LATER INTERNATIONAL CV (4X4)

	<p>1. THINK SAFETY, ALWAYS WEAR SAFETY GLASSES WHEN PERFORMING THE OPERATIONS PRESCRIBED IN THESE INSTRUCTIONS</p> <p>2. READ ALL INSTRUCTIONS CAREFULLY BEFORE ATTEMPTING INSTALLATION</p> <p>3. BEFORE BEGINNING WORK MAKE SURE TO SET PARKING BRAKE AND CHOCK WHEELS</p>	
---	--	---

MINIMUM VEHICLE RECOMMENDATIONS

Heavy Duty Alternator
 Heavy Duty Battery

NOTE: On some vehicles it may be necessary to use a form of load booster to decrease the vehicle's front suspension sag with the snow plow in place. This can be accomplished with the use of supplementary air bags, booster springs, or similar load boosting devices. Since there are different load boosting devices available, it will up to the customer/end user to decide and purchase the product to suit the application, and not the responsibility of Sno-Way International, Inc.

ASSEMBLY TOOLS NEEDED

Impact Sockets	7/16" – 1-3/8"
Metric Sockets	10 mm – 18 mm
Wrenches	7/16" – 1-3/8"
Metric Wrenches	10 mm – 18 mm

INSTALLATION NOTES

1. Unless otherwise specified, mount all Vehicle Mount Kit Components to vehicle before tightening any hardware.
2. It is recommended that **LOCTITE®**, or similar thread locking product, be used on ALL mounting hardware (i.e. Nuts, Cap Screws, Bolts, etc.).
3. Vehicle should be parked on a level surface with a normal vehicle load on the FRONT suspension.
4. Items in parentheses () refer to quantity required for this step. Items in parentheses with a pound sign (#) indicate the part number as found in the parts list on the last page of this document.
 Example: (2) 1/2"-13 x 1-1/2" Cap Screws (#8).
5. It may be necessary to relocate license plate holder. Check state and local laws for placement, if needed.

2. Place the Driver Side Front Mount Weldment (#2) over the bumper bracket and align with the caps screws described in step 1. Secure in place with (3) 5/8"-11 Locknuts (#11). (See Figure 2.)

MOUNTING INSTRUCTIONS

1. Remove the three nuts holding the driver side of the bumper to the frame and replace the bolts with (3) 5/8"-11 x 4-1/2" Cap Screws (#9). (See Figure 1.)

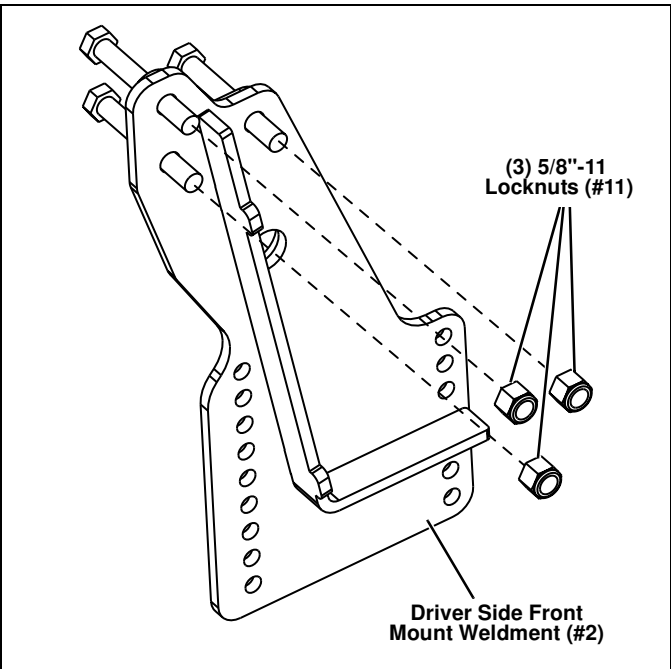


Figure 2

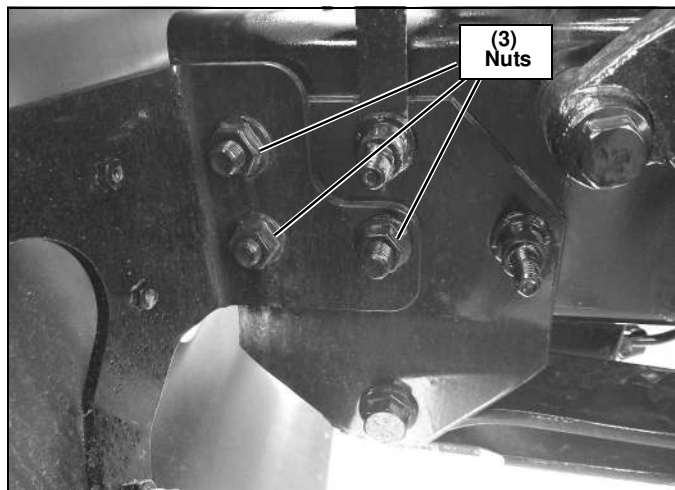


Figure 1

3. Approximately 2 feet back in the frame rail is a set of three pre-existing holes. (See Figure 3.) Align those holes with the ones in the Driver Side Rear Mount Weldment (#4). Secure into place with (3) 5/8"-11 x 2" Handle Bolt Weldments (#12) and (3) 5/8"-11 Locknuts (#11). (See Figure 4.)

NOTE: Place Driver Side Rear Mount Weldment (#4) behind Driver Side Front Mount Weldment (#2). (See Figure 4.)

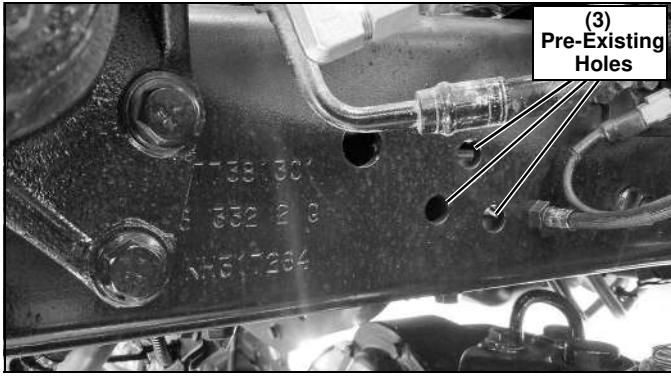


Figure 3

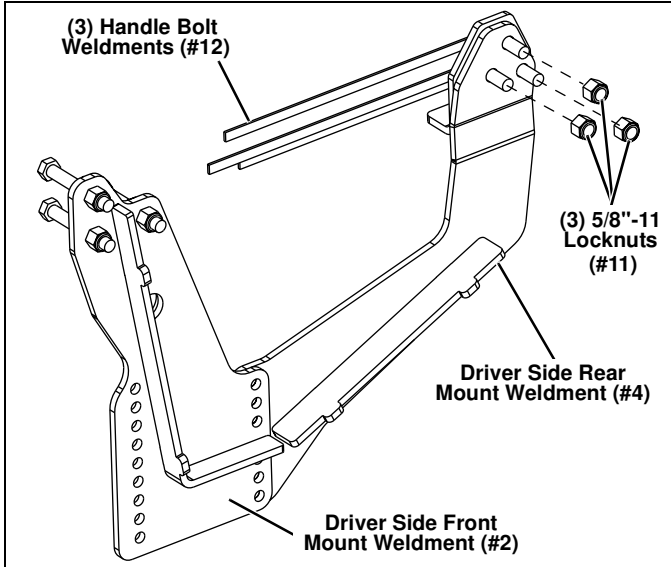


Figure 4

4. Repeat steps 1-3 to install the Passenger Side Front and Rear Mount Weldments (#3 & #5).
5. Attach the Vehicle Center Member (#1) to the Driver and Passenger Front and Rear Mount Weldments (#2 thru #5). Secure using (10) 1/2"-13 x 2" Cap Screws (#8), (4) 1/2" Lock Washers (#7), (2) 3/8" Spacer Plates (#6), and (6) 1/2"-13 Locknuts (#10). (See Figure 5.)

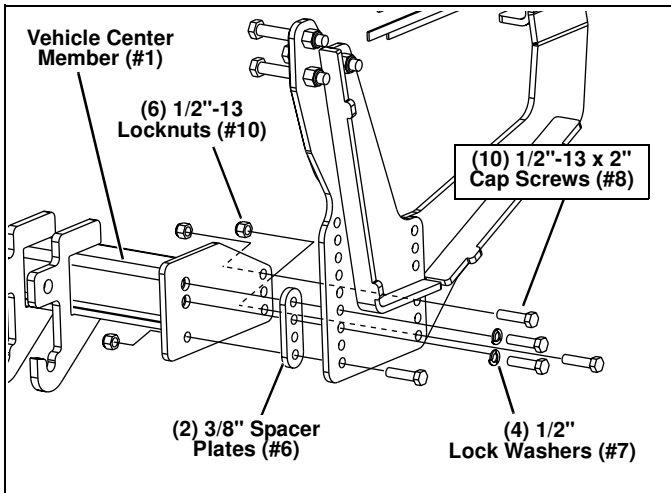


Figure 5

6. Secure the Driver Side Front and Rear Mount Weldments (#2 & #3) together with (1) 1/2"-13 x 2" Cap Screw (#8) and (1) 1/2"-13 Locknut (#10) in the top hole where they mate up. No matter what position the Vehicle Center Member (#1) is set to, there must always be hardware in this hole. (See Figure 6.)

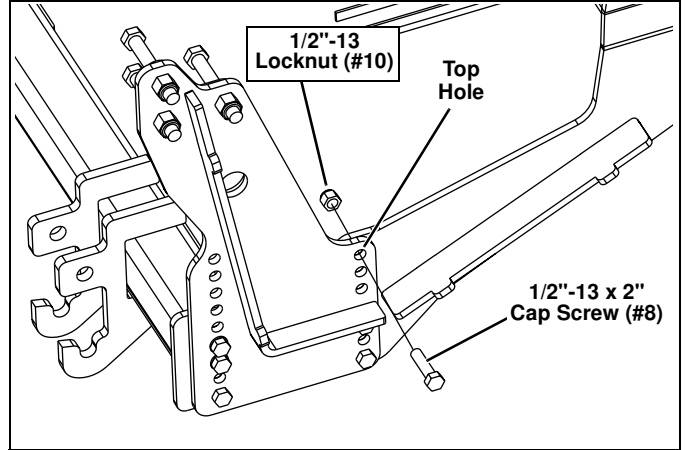
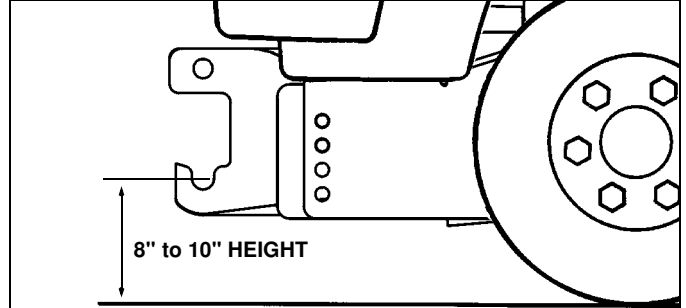


Figure 6

7. With all the components now in place, tighten all the hardware. Using the Torque Specification Chart below, torque all Cap Screws.

IMPORTANT: Height from the center of the lower plow mounting slots on the Vehicle Mount Kit to the ground should be between 8" and 10" to insure proper operation.



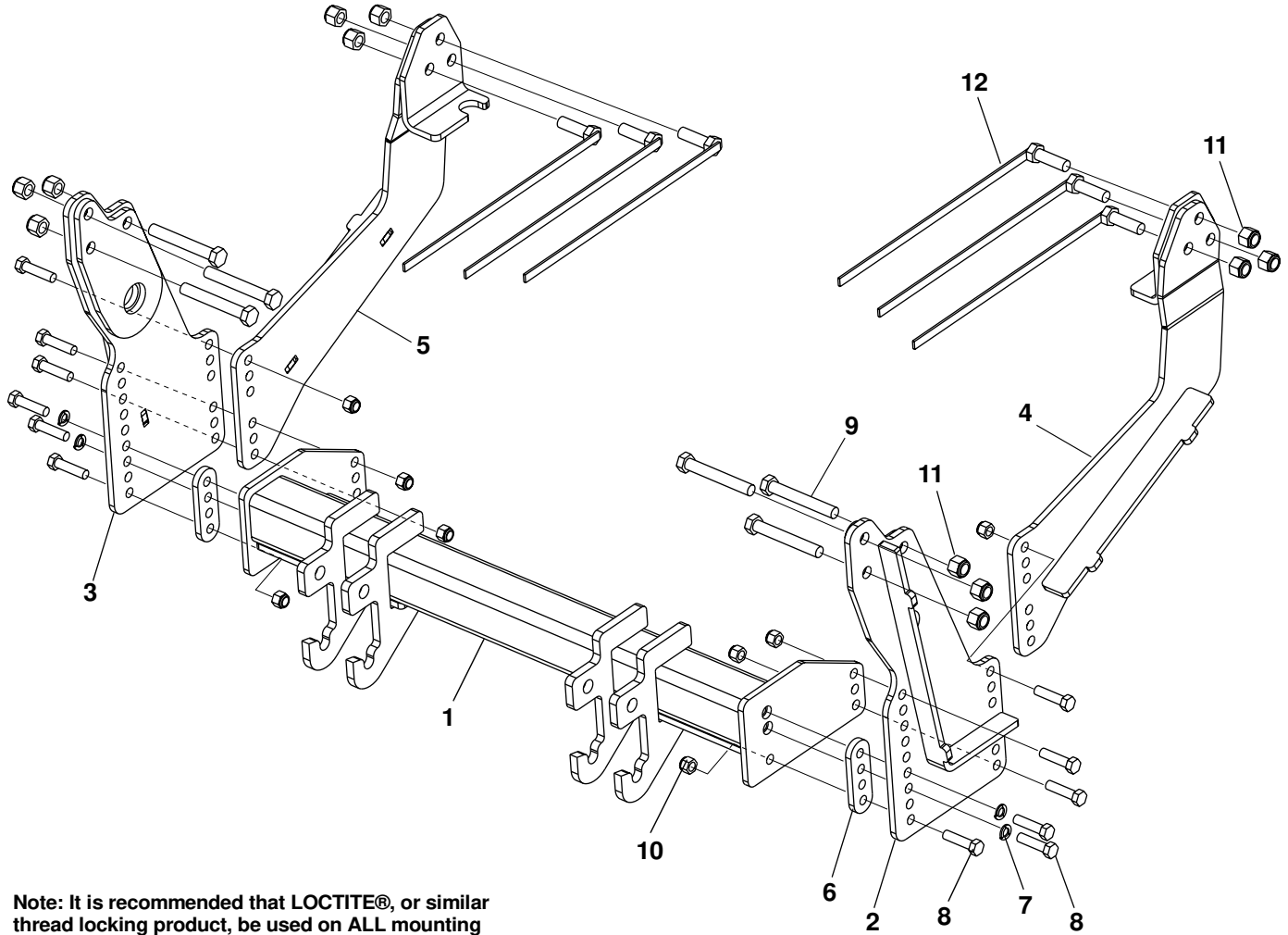
TORQUE SPECIFICATIONS FOR STANDARD MACHINE HARDWARE

Bolt Size	GR.2 Dry	GR.5 Dry	GR.8 Dry	Metric Size	GR.8.8 Dry
1/4"	66*	9	12	M8	17
5/16"	11	17	25	M10	35
3/8"	20	30	45	M12	60
7/16"	32	50	70	M14	95
1/2"	50	75	110	M16	155
9/16"	70	110	150		
5/8"	100	150	220		
3/4"	175	260	380		
7/8"	170	430	600		
1"	250	640	900		

Note: These torque values are to be used for all hardware. Unless otherwise specified, all torque values must meet this specification.
 Note: All torque values are in Ft.-Lbs unless otherwise stated
 Note: *In-Lbs

REMEMBER After 5 to 10 hours of snowplow usage, re-torque all Cap Screws!

PARTS LIST



Note: It is recommended that LOCTITE®, or similar thread locking product, be used on ALL mounting hardware (i.e. Nuts, Cap Screws, Bolts, etc.).

ITEM	PART NO.	DESCRIPTION	QTY.
1	99101357	Vehicle Center Member	1
2		Weldment, Mount, Front, DS	1
3		Weldment, Mount, Front, PS.....	1
4		Weldment, Mount, Rear, DS	1
5		Weldment, Mount, Rear, PS	1
6		Plate, Spacer, 3/8".....	2
7		LW, 1/2".....	4
8		HHCS, 1/2"-13 x 2"	12
9		HHCS, 5/8"-11 x 4-1/2"	6
10		LN, 1/2"-13.....	8
11		LN, 5/8"-11	12
12		Handle Bolt Weldment, 5/8"-11 x 2"	6
13	96116963	Kit, HDWE (Includes Items 6-12)	1

SNO-WAY® INTERNATIONAL, INC.



Hartford, WI 53027 USA
 Website: www.snoway.com
 ©2019 Sno-Way® International