

# **SNO-WAY**®

**SNOW & ICE CONTROL EQUIPMENT**

## **ASSEMBLY & INSTALLATION INSTRUCTIONS**

**VEHICLE MOUNT KIT 99101389  
FOR UTV SERIES PLOW**

TO FIT

2018 & Later - Arctic Cat Prowler Pro  
2018 & Later - CAT CUV82, CUV85, CUV102D, CUV105D  
2018 & Later - Textron Prowler Pro



©2019 Sno-Way® International

97102187A



1. THINK SAFETY, ALWAYS WEAR SAFETY GLASSES WHEN PERFORMING THE OPERATIONS PRESCRIBED IN THESE INSTRUCTIONS
2. READ ALL INSTRUCTIONS CAREFULLY BEFORE ATTEMPTING INSTALLATION
3. BEFORE BEGINNING WORK MAKE SURE TO SET PARKING BRAKE AND CHOCK WHEELS



### ASSEMBLY TOOLS NEEDED

Impact Sockets	7/16" - 1-3/8"
Wrenches	7/16" - 1-3/8"
Drill Bit	13/32"
Torque Wrench	
Center Punch	

### INSTALLATION NOTES

1. Vehicle should be parked on a level surface with a normal vehicle load on the FRONT suspension.

2. On some vehicles it may be necessary to raise or stiffen the suspension to decrease the vehicles front suspension sag with the snow plow in place.
3. Unless otherwise specified, mount all Vehicle Mount Kit Components to vehicle before tightening any hardware.
4. It is recommended that LOCTITE®, or similar thread locking product, be used on ALL mounting hardware (i.e. Nuts, Cap Screws, Bolts, etc.).
5. Items in parentheses ( ) refer to quantity required for this step. Items in parentheses with a pound sign (#) indicate the part number as found in the parts list on the last page of this document.  
Example: (2) 1/2" Lock Washers (#9).

### MOUNTING INSTRUCTIONS

1. Remove the two tow hooks and lower plastic shroud from the vehicle. (See Figure 1.)

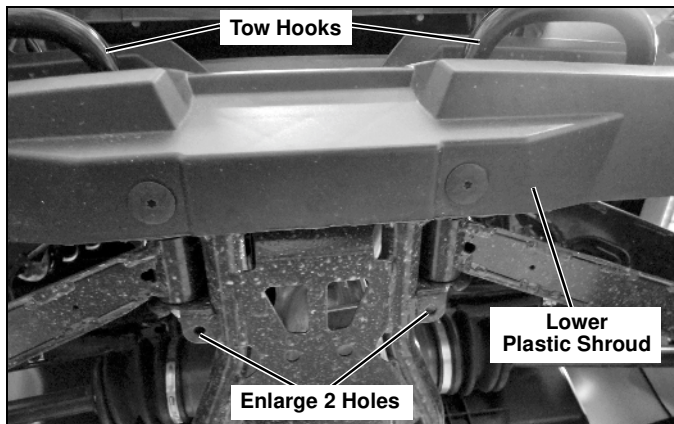


Figure 1

2. Use a 13/32" drill bit to enlarge the 2 holes (Driver and Passenger side) in the front A-arm brackets of the front wheels. (See Figure 1.)
3. Slide the Mounting Weldment (#2) straight back into position, inserting the rear tabs into the square hole of the frame. (See Figure 2.)

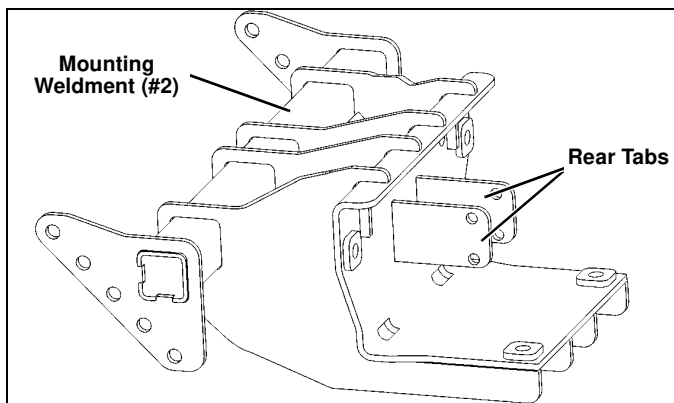


Figure 2

4. Align a 3/8" Plain Washer (#6) with the outer front hole of the Mounting Weldment (#2). Then, insert a 3/8"-16 x 1-1/4" Cap Screw (#5) through the Mounting Weldment (2), 3/8" Plain Washer (#6), and vehicle frame. Secure with a 3/8"-16 Locknut (#8). (See Figure 3.)

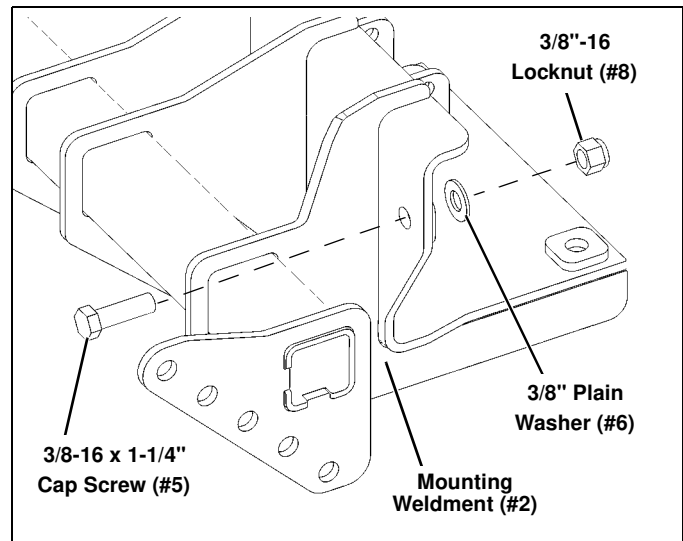


Figure 3

5. In the inner driver side front hole, insert a 3/8"-16 x 1-1/4" Cap Screw (#5) through the Mounting Weldment (#2), and vehicle frame. Secure with a 3/8"-16 Locknut (#8). (See Figure 4.)

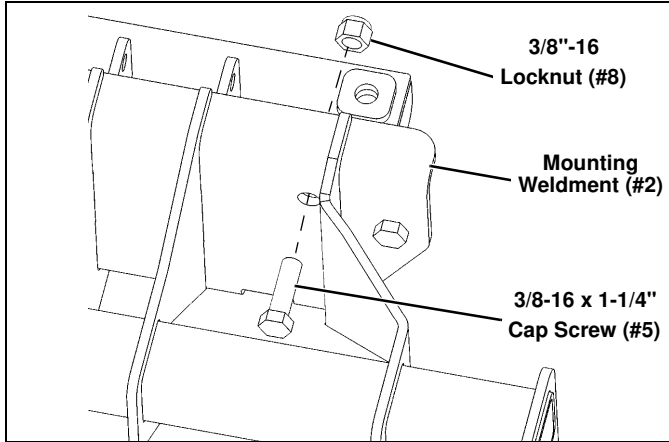


Figure 4

6. Repeat steps 4 & 5 for the Passenger Side.

7. Insert (2) 5/16"-18 x 3-1/2" Cap Screws (#3) through the center rear tabs of the vehicle frame and Mounting Weldment (#2). Secure with a 3/8"-16 Locknut (#8). (See Figure 5.)

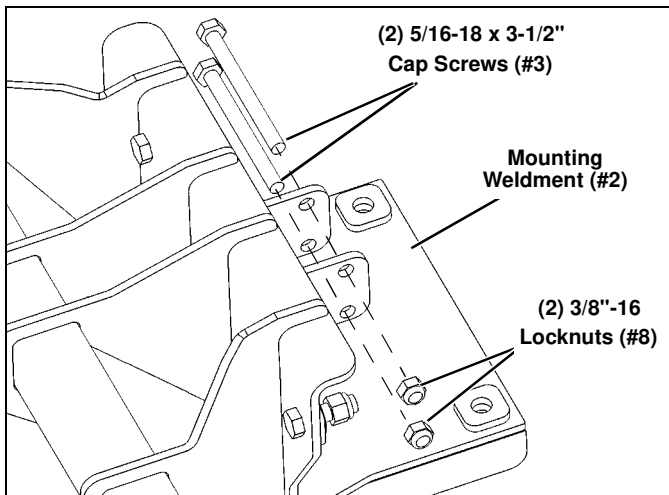


Figure 5

8. Secure the last two holes of the Mounting Weldment (#2) with (2) 3/8"-16 x 1-1/4" Cap Screws (#5) and (2) 3/8"-16 Locknuts (#8). These will mount to the A-arm brackets that were drilled. (See Figure 6.)

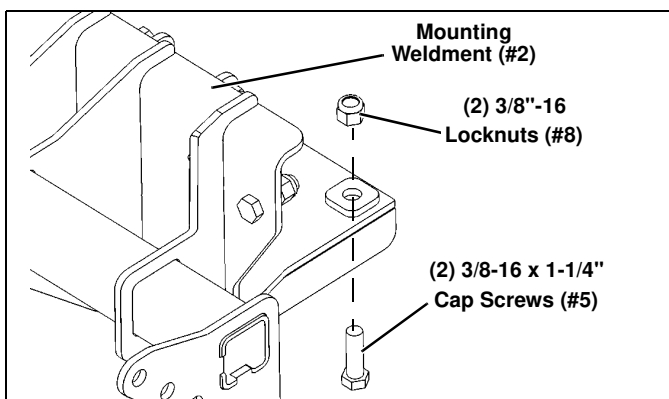


Figure 6

9. Attach the UTV Mount (#1) to the Mounting Weldment (#2) with (6) 3/8"-16 x 1" Cap Screws (#4) and (6) 3/8"-16 Locknuts (#8) (three on each side). (See Figure 7.)

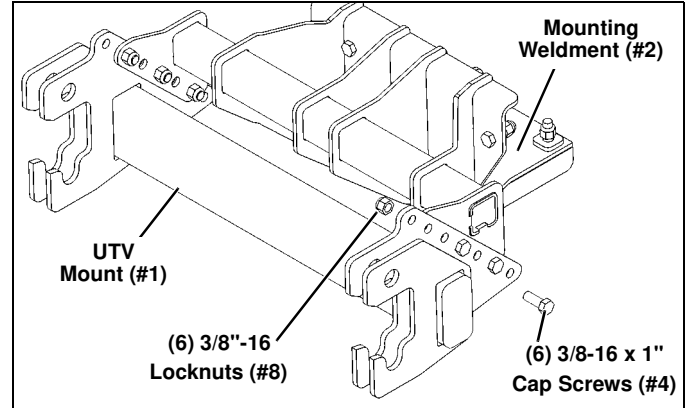
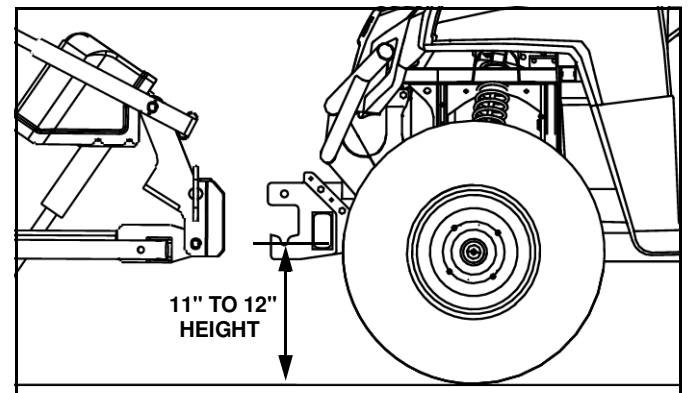


Figure 7

10. Adjust the UTV Mount (#1) so that the center of the bottom slot is 11-12" off the ground.



**IMPORTANT:** Height from the bottom of the lower pin slots on the UTV Mount to the ground should be between 11" and 12" to ensure proper operation.

11. Re-attach the brush guard to the vehicle. Keep the inner shroud and hardware for re-installation if mount is removed.

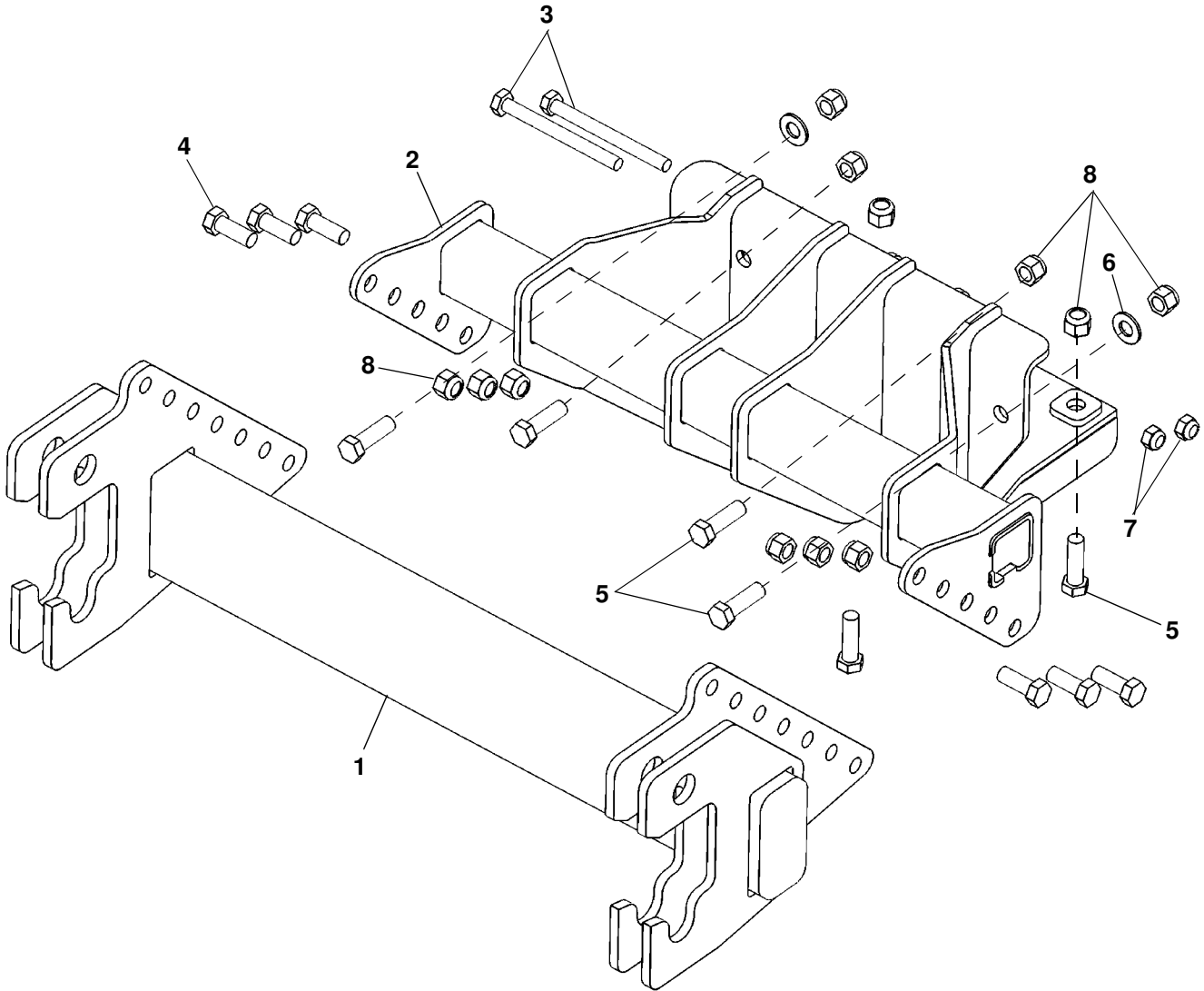
12. Tighten all hardware, except step 7, using the Torque Specification Chart below. Don't tighten the hardware from Step 7 so much that it collapses the tabs.

TORQUE SPECIFICATIONS FOR STANDARD MACHINE HARDWARE					
Bolt Size	GR.2 Dry	GR.5 Dry	GR.8 Dry	Metric Size	GR.8.8 Dry
1/4"	66*	9	12	M8	17
5/16"	11	17	25	M10	35
3/8"	20	30	45	M12	60
7/16"	32	50	70	M14	95
1/2"	50	75	110	M16	155
9/16"	70	110	150		
5/8"	100	150	220		
3/4"	175	260	380		
7/8"	170	430	600		
1"	250	640	900		

These torque values are to be used for all hardware. Unless otherwise specified, all torque values must meet this specification.  
All torque values are in Ft.-Lbs unless otherwise stated  
\*In-Lbs

**REMEMBER** After 5 to 10 hours of snowplow usage, re-torque all hardware!

# PARTS LIST



Note: It is recommended that LOCTITE®, or similar thread locking product, be used on ALL mounting hardware (i.e. Nuts, Cap Screws, Bolts, etc.).

ITEM	PART NO.	DESCRIPTION	QTY.
1		UTV Mount.....	1
2		Weldment, Mounting.....	1
3		HHCS, 5/16-18 x 3-1/2".....	2
4		HHCS, 3/8"-16 x 1".....	6
5		HHCS, 3/8"-16 x 1-1/4".....	6
6		PW, 3/8".....	2
7		LN, 5/16"-18.....	2
8		LN, 3/8"-16.....	12
9	96117512	Kit, HDWE (Includes items 3-8) (Not Shown).....	1

SNO-WAY® INTERNATIONAL, INC.



Hartford, WI 53027 USA  
 Website: [www.snoway.com](http://www.snoway.com)  
 ©2019 Sno-Way® International