

# **SNO-WAY**®

**SNOW & ICE CONTROL EQUIPMENT**

## **ASSEMBLY & INSTALLATION INSTRUCTIONS**

**VEHICLE MOUNT KIT 99101392  
FOR UTV SERIES PLOW**

TO FIT

2017 & Later - Artic Cat Stampede

2017 & Later - Textron Stampede

2018 & Later - Artic Cat HAVOC



©2020 Sno-Way® International

97102198A



1. THINK SAFETY, ALWAYS WEAR SAFETY GLASSES WHEN PERFORMING THE OPERATIONS PRESCRIBED IN THESE INSTRUCTIONS
2. READ ALL INSTRUCTIONS CAREFULLY BEFORE ATTEMPTING INSTALLATION
3. BEFORE BEGINNING WORK MAKE SURE TO SET PARKING BRAKE AND CHOCK WHEELS



### ASSEMBLY TOOLS NEEDED

Impact Sockets	7/16" - 1-3/8"
Wrenches	7/16" - 1-3/8"
Drill Bit	13/32"
Torque Wrench	
Center Punch	

### INSTALLATION NOTES

1. Vehicle should be parked on a level surface with a normal vehicle load on the FRONT suspension.

2. On some vehicles it may be necessary to raise or stiffen the suspension to decrease the vehicles front suspension sag with the snow plow in place.
3. Unless otherwise specified, mount all Vehicle Mount Kit Components to vehicle before tightening any hardware.
4. It is recommended that LOCTITE®, or similar thread locking product, be used on ALL mounting hardware (i.e. Nuts, Cap Screws, Bolts, etc.).
5. Items in parentheses ( ) refer to quantity required for this step. Items in parentheses with a pound sign (#) indicate the part number as found in the parts list on the last page of this document.  
Example: (2) 1/2" Lock Washers (#9).

### MOUNTING INSTRUCTIONS

1. Temporarily uninstall the Skid Plate and Brush Plate by removing the eight screws screw holding them in place. (See Figure 1.)

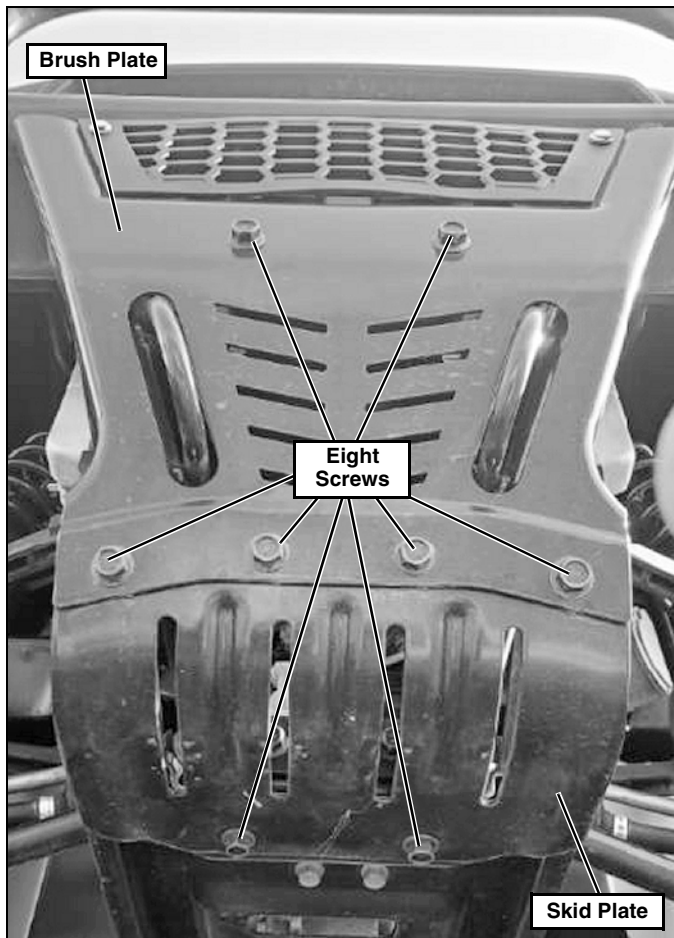


Figure 1

2. Remove the two nut clips to be installed later. (See Figure 2.)

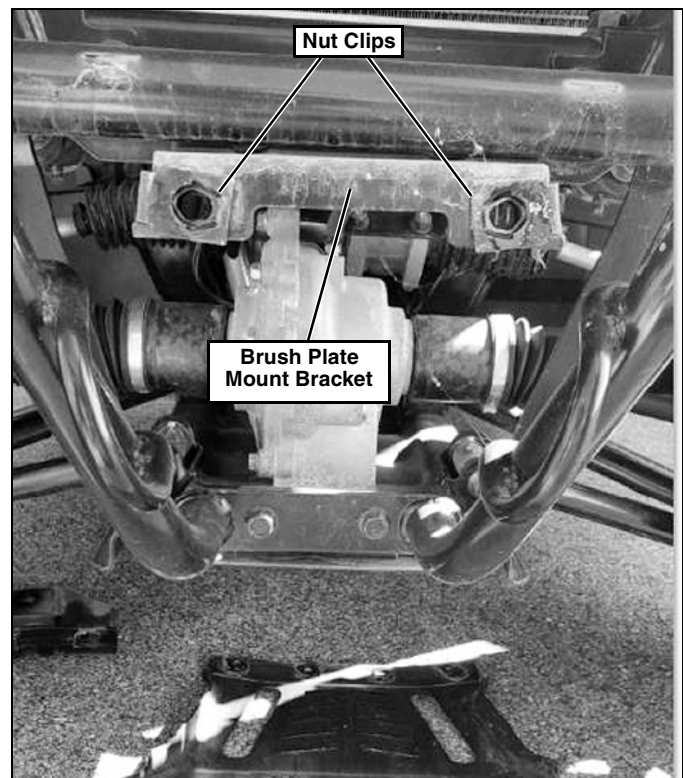


Figure 2

3. Remove the Brush Plate Mount Bracket and keep to re-install if the plow mount is ever removed. (See Figure 2.)

- Remove the 4 screws holding the Brush Guard in place. Slide the Brush Guard straight out from the UTV. (See Figure 3.)

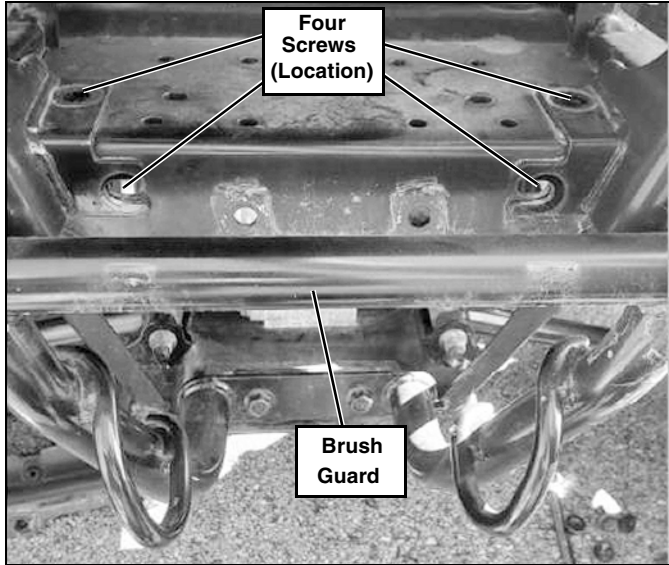


Figure 3

- The Mount Weldment (#2) will fit behind and around the Brush Guard, but both will need to be placed onto the UTV at the same time. While the Brush Guard is off, slide the Mount Weldment (#2) into position on the brush guard. Slide the Mount Weldment (#2) and Brush Guard back in place. Install the two top screws and nuts for the Brush Guard to briefly secure the parts in position. (See Figure 4.)

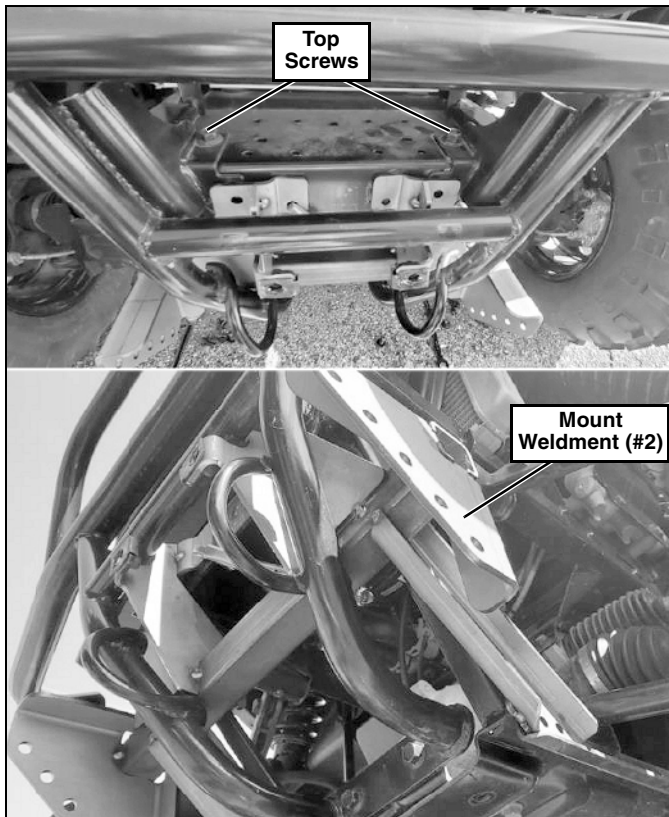


Figure 4

- Insert (4) 3/8"-16 x 1-1/4" Cap Screws (#5) through the top 4 holes of the Mount Weldment (#2), Brush Guard, and UTV frame. Secure in place with (4) 3/8" Plain Washers (#7) and (4) 3/8"-16 Locknuts (#6). (See Figure 5.)

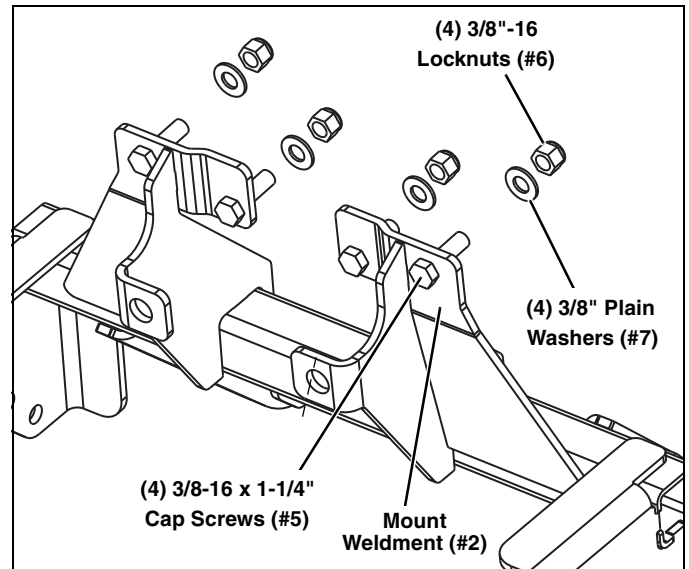


Figure 5

- Tighten the hardware from steps 5 & 6.
- Slide on the nut clips removed in step 2, onto the Mount Weldment (#2). (See Figure 6.)

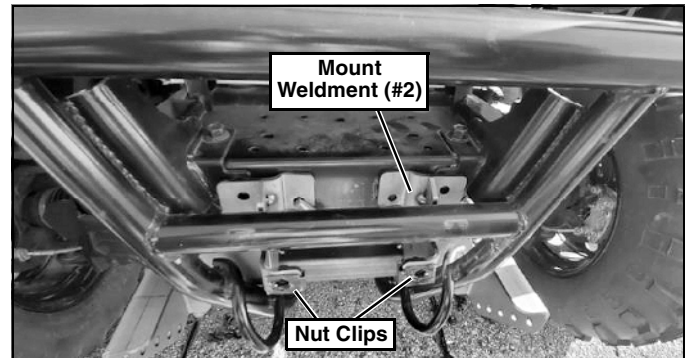


Figure 6

- Use the holes in the lower rear of the Mount Weldment (#2) as a drilling template. On the Driver Side, mark the center of the hole, then center punch and drill pilot holes. Drill the holes to 11/32". (See Figure 7.)

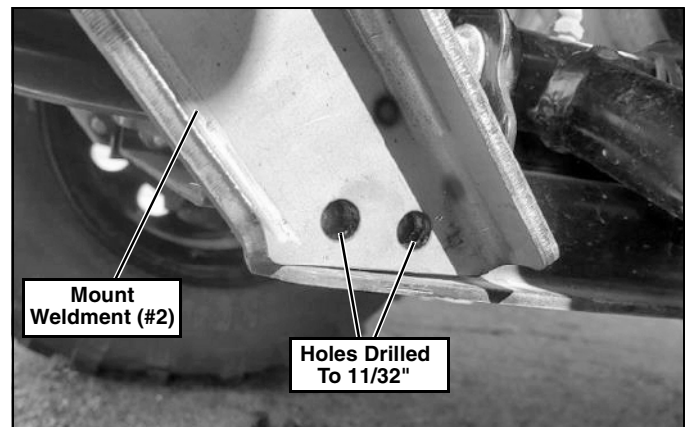


Figure 7

10. Secure the Mount Weldment (#2) to the lower frame rail with (2) 5/16"-18 x 1" Cap Screws (#3) and (2) 5/16"-18 Locknuts (#4). (See Figure 8.)

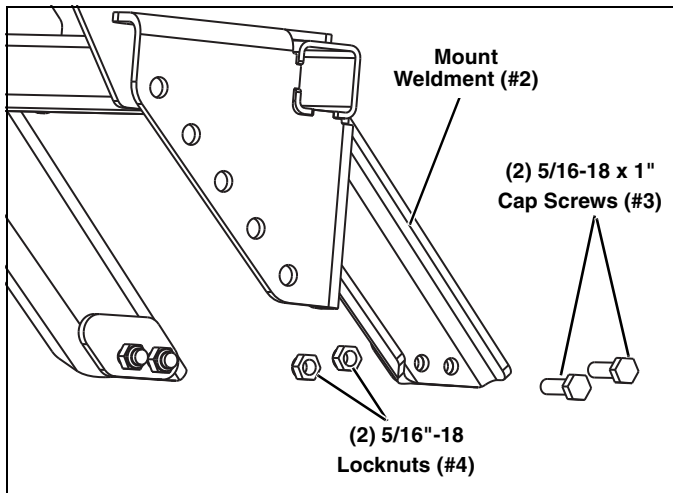


Figure 8

11. Repeat Steps 9 and 10 for the Passenger Side. Then tighten all the hardware.  
 12. Re-Install the Skid Plate and Brush Plate from step 1. Then tighten hardware. (See Figure 9.)

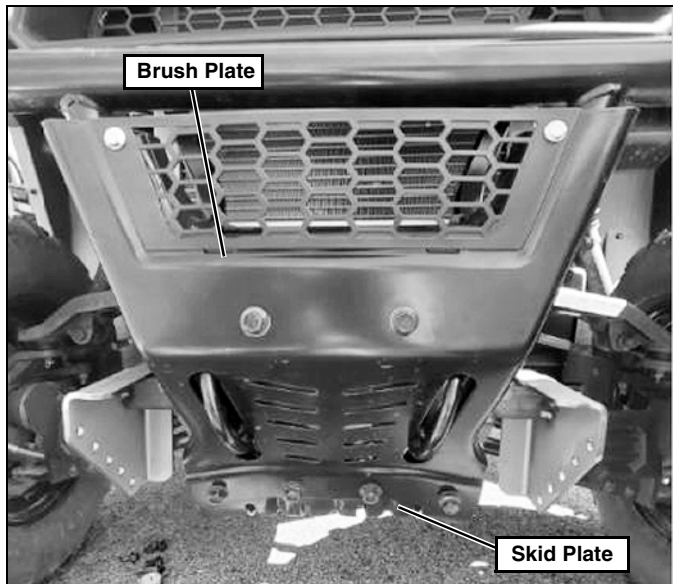


Figure 9

13. Align the UTV Mount (#1) with the holes in the Mount Weldment (#2). Adjust the UTV Mount (#1) so that the center of the bottom slot is 11-12" off the ground. (See Figure 10.)

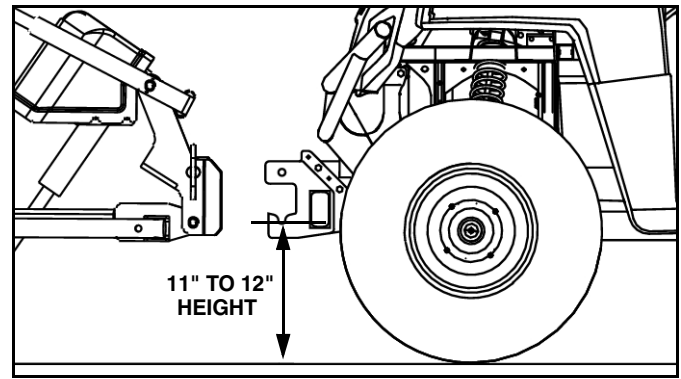


Figure 10

**IMPORTANT:** Height from the bottom of the lower pin slots on the UTV Mount to the ground should be between 11" and 12" to ensure proper operation.

14. Loosely secure the UTV Mount (#1) with (6) 3/8"-16 x 1-1/4" Hex Head Cap Screws (#5) and (6) 3/8"-16 Locknuts (#6). (See Figure 11.)

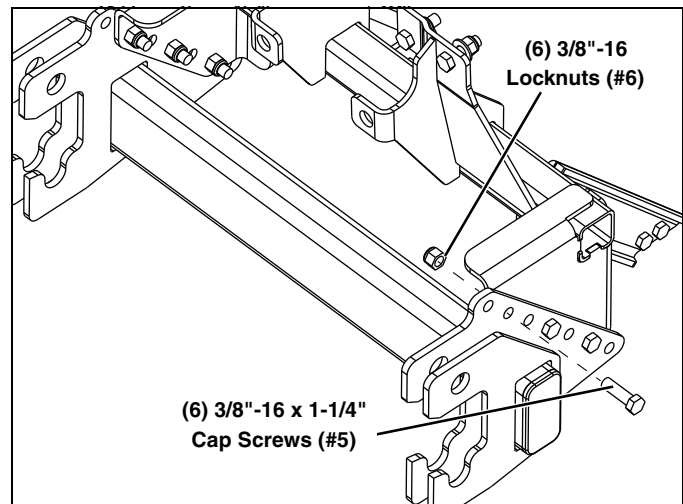


Figure 11

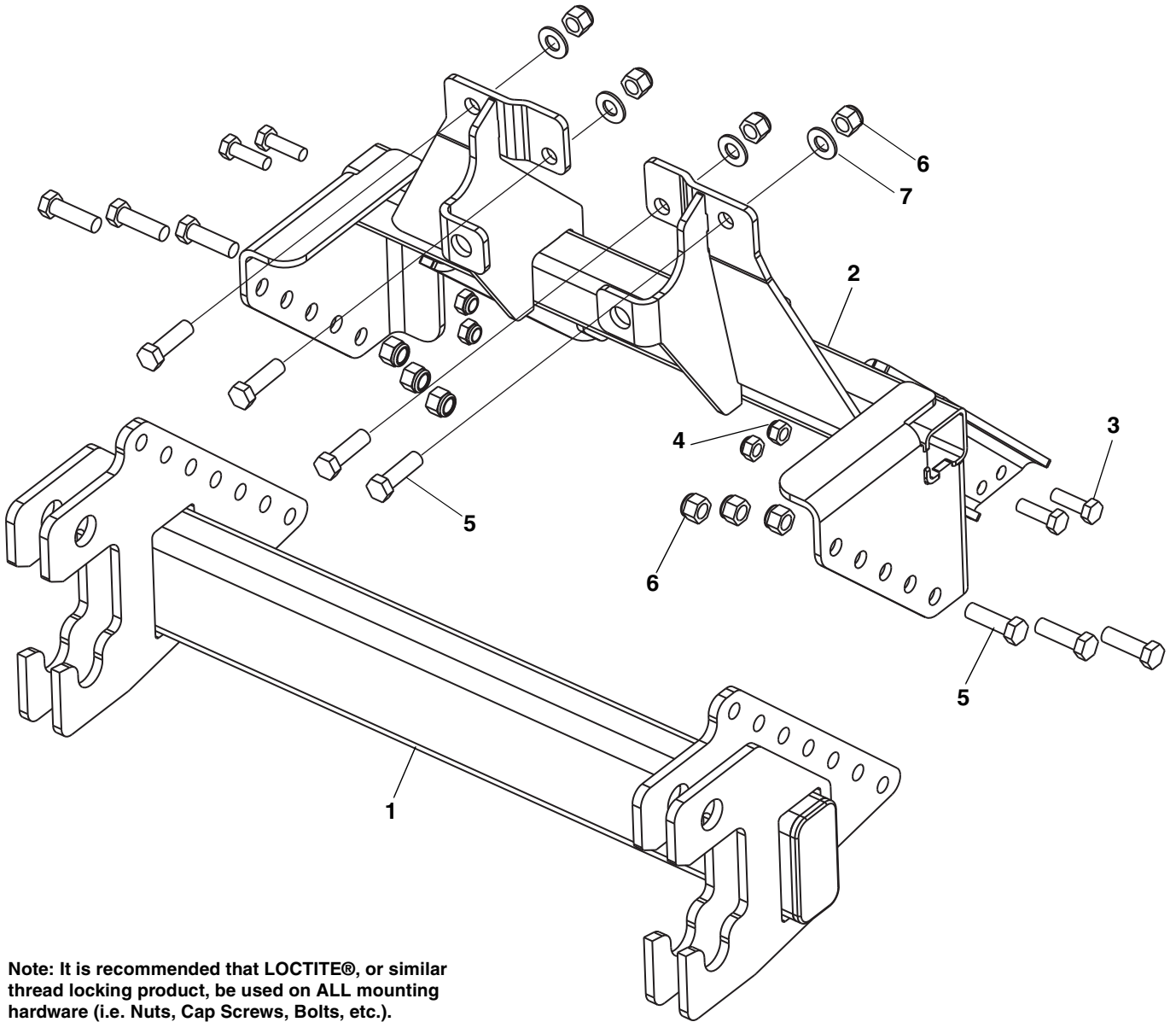
15. Tighten all hardware using the Torque Specification Chart Below.

TORQUE SPECIFICATIONS FOR STANDARD MACHINE HARDWARE					
Bolt Size	GR.2 Dry	GR.5 Dry	GR.8 Dry	Metric Size	GR.8.8 Dry
1/4"	66*	9	12	M8	17
5/16"	11	17	25	M10	35
3/8"	20	30	45	M12	60
7/16"	32	50	70	M14	95
1/2"	50	75	110	M16	155
9/16"	70	110	150		
5/8"	100	150	220		
3/4"	175	260	380		
7/8"	170	430	600		
1"	250	640	900		

These torque values are to be used for all hardware. Unless otherwise specified, all torque values must meet this specification.  
 All torque values are in Ft.-Lbs unless otherwise stated  
 \*In-Lbs

**REMEMBER** After 5 to 10 hours of snowplow usage, re-torque all hardware!

# PARTS LIST



Note: It is recommended that LOCTITE®, or similar thread locking product, be used on ALL mounting hardware (i.e. Nuts, Cap Screws, Bolts, etc.).

ITEM	PART NO.	DESCRIPTION	QTY.
1		UTV Mount.....	1
2		Weldment, Mounting.....	1
3		HHCS, 5/16"-18 x 1".....	4
4		LN, 5/16"-18.....	4
5		HHCS, 3/8"-16 x 1-1/4".....	10
6		LN, 3/8"-16.....	10
7		PW, 3/8".....	4
8	96117871	Kit, HDWE (Includes items 3-7) (Not Shown).....	1

# NOTES

# NOTES

---

**SNO-WAY® INTERNATIONAL, INC.**



Hartford, WI 53027 USA  
Website: [www.snoway.com](http://www.snoway.com)  
©2020 Sno-Way® International

[www.storksplows.com](http://www.storksplows.com)