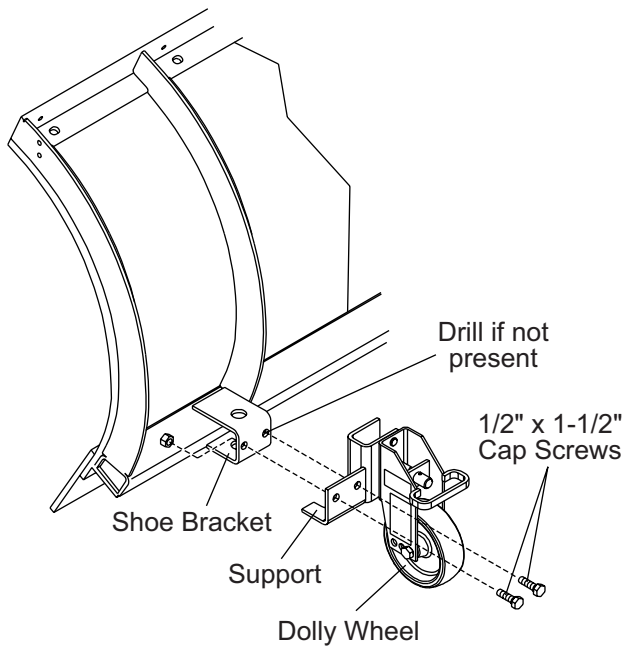




**NOTE:** Please give these instructions to the customer.

## INSTALLATION INSTRUCTIONS

1. Assemble the support to the shoe bracket as shown in Figure 1.



**Figure 1**

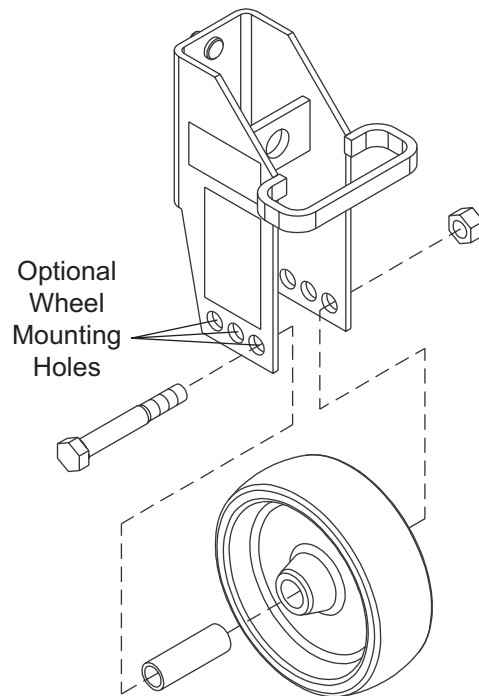
If attaching the dolly wheel to a shoe bracket without holes, center the support to the shoe bracket and clamp securely. Using the holes in the support as a template, drill two 1/2" holes in each shoe bracket.

2. Attach each dolly wheel with two 1/2" x 1-1/2" cap screws and locknuts. See Figure 1.

**NOTE:** Do not use the dolly wheels in place of the disc shoes.

## WHEEL ADJUSTMENT

Moving the wheel forward or backward in the three optional wheel mounting holes in the yoke will increase or decrease the amount of weight on the stand shoe. See Figure 2. This changes the effort required to maneuver the blade assembly.



**Figure 2**

# OPERATION INSTRUCTIONS

## OPERATION INSTRUCTIONS

Refer to Figure 3 for steps 1–3.

1. To change the dolly wheel position with the plow attached to the vehicle and in the raised position, remove the linchpin.
2. Pull the yoke outward and rotate 1/2 turn to the desired position. This allows the yoke to spring back insuring that the locating pins are engaged.

### ⚠ CAUTION

To avoid damage to the product, install the linchpin prior to plowing.

3. Install the linchpin in the hole.

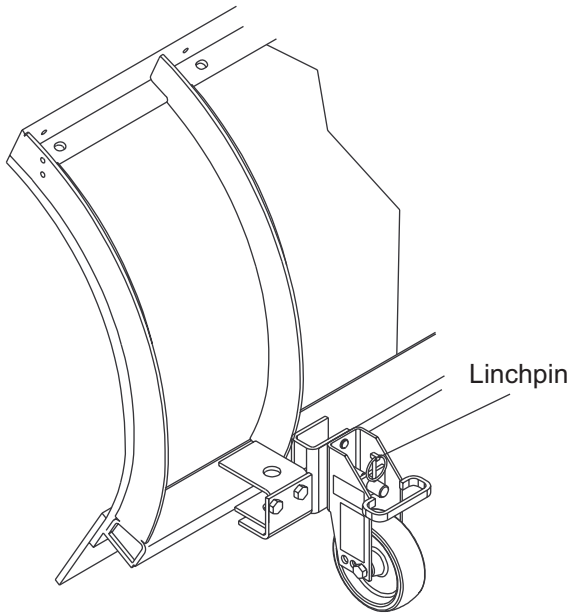


Figure 3

### ⚠ CAUTION

Do not use the dolly wheel in the down position when plowing. Failure to comply could damage the product.

Rotate the dolly wheel down for easy maneuvering when the plow is off of the truck. See Figure 4.

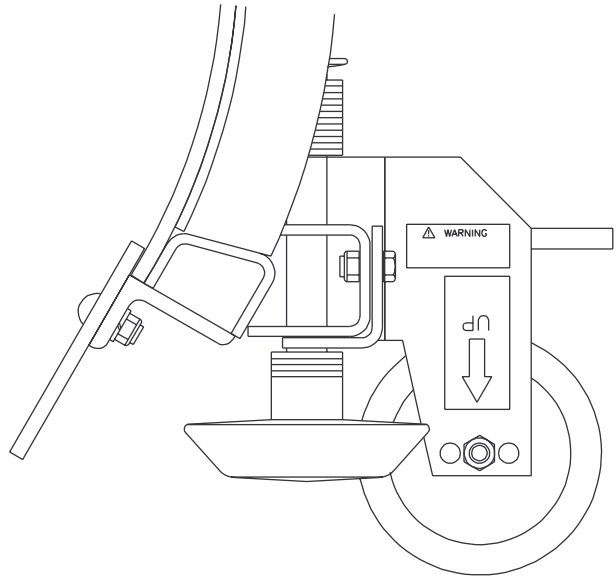


Figure 4

Rotate the dolly wheel up when the plow is on the truck. See Figure 5.

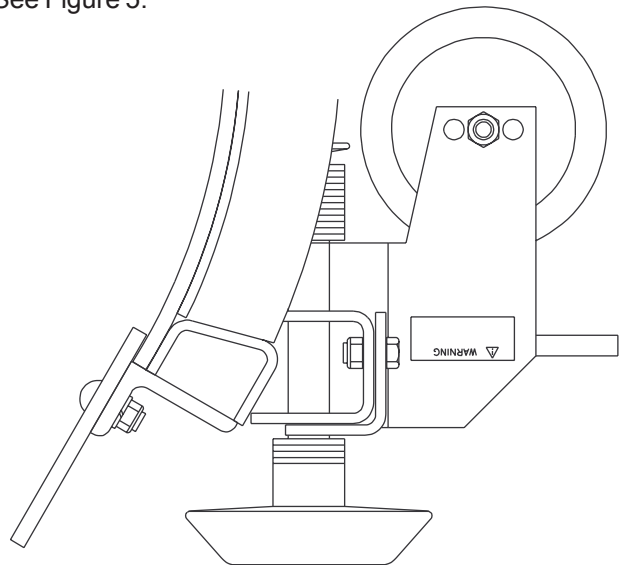
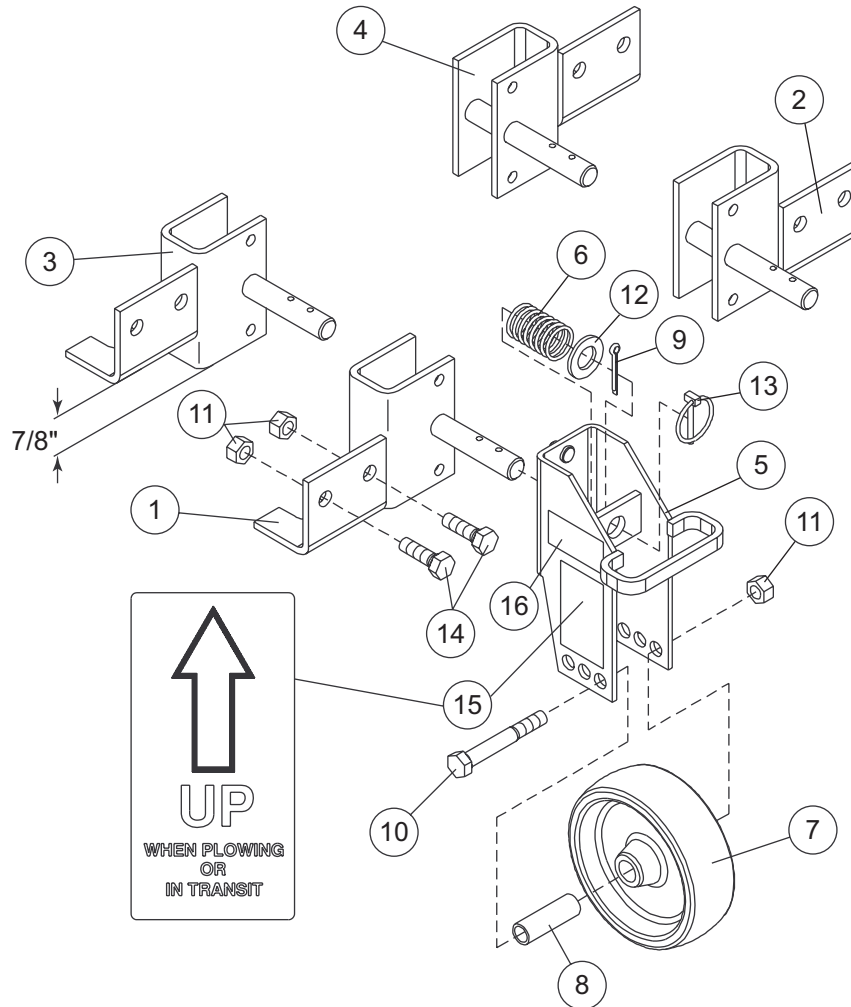


Figure 5

# PARTS LIST



DOLLY WHEEL ASSEMBLY							
Item	Part	Qty	Description	Item	Part	Qty	Description
	62425	1	DOLLY WHEEL ASSY, P PY HW	8	62424	2	SPACER
	62430	1	DOLLY WHEEL ASSY, S SY	9	91911	2	5/32X1-1/2 COTTER PIN ZYC
1	62433	1	SUPPORT DS, P PY HW	10	90610	2	1/2-13X3-1/2 HEX CAP SCREW G5
2	62432	1	SUPPORT PS, P PY HW	11	91335	6	1/2-13 HEX LOCKNUT GB
3	62436	1	SUPPORT DS, S SY	12	91147	2	3/4 FLAT WASHER
4	62435	1	SUPPORT PS, S SY	13	93042K	2	LINCHPIN 3/16
5	62429	2	YOKE	14	90210	4	1/2-13X1-1/2 HEX CAP SCREW G5
6	62423	2	SPRING 1-1/8 X 2	15	62437	2	LABEL – INFORMATION (INSTRUCT)
7	62421	2	WHEEL 6X2	16	62447	4	LABEL – INFORMATION (WARNING)

ABBREVIATIONS	
ASSY	Assembly
DS	Driver Side
G	Grade
HW	Heavyweight Plow
P	PRO-PLOW
PS	Passenger Side
PY	PRO-PLOW Poly
S	Standard Plow
SY	Standard Poly Plow
ZYC	Zinc Yellow Chromate

---

Copyright © 2002 Douglas Dynamics, L.L.C. All rights reserved. This material may not be reproduced or copied, in whole or in part, in any printed, mechanical, electronic, film or other distribution and storage media, without the written consent of Western Products. Authorization to photocopy items for internal or personal use by Western Products outlets is granted.

Western Products reserves the right under its Product Improvement Policy to change construction or design details and furnish equipment when so altered without reference to illustrations or specifications used herein. Western Products and the vehicle manufacturer may require and/or recommend optional equipment for snow removal. Western Products offers a limited warranty on all snowplows, spreaders, and accessories. See separately printed page for this important information. The following is a registered (®) trademark of Douglas Dynamics, L.L.C.: WESTERN®.