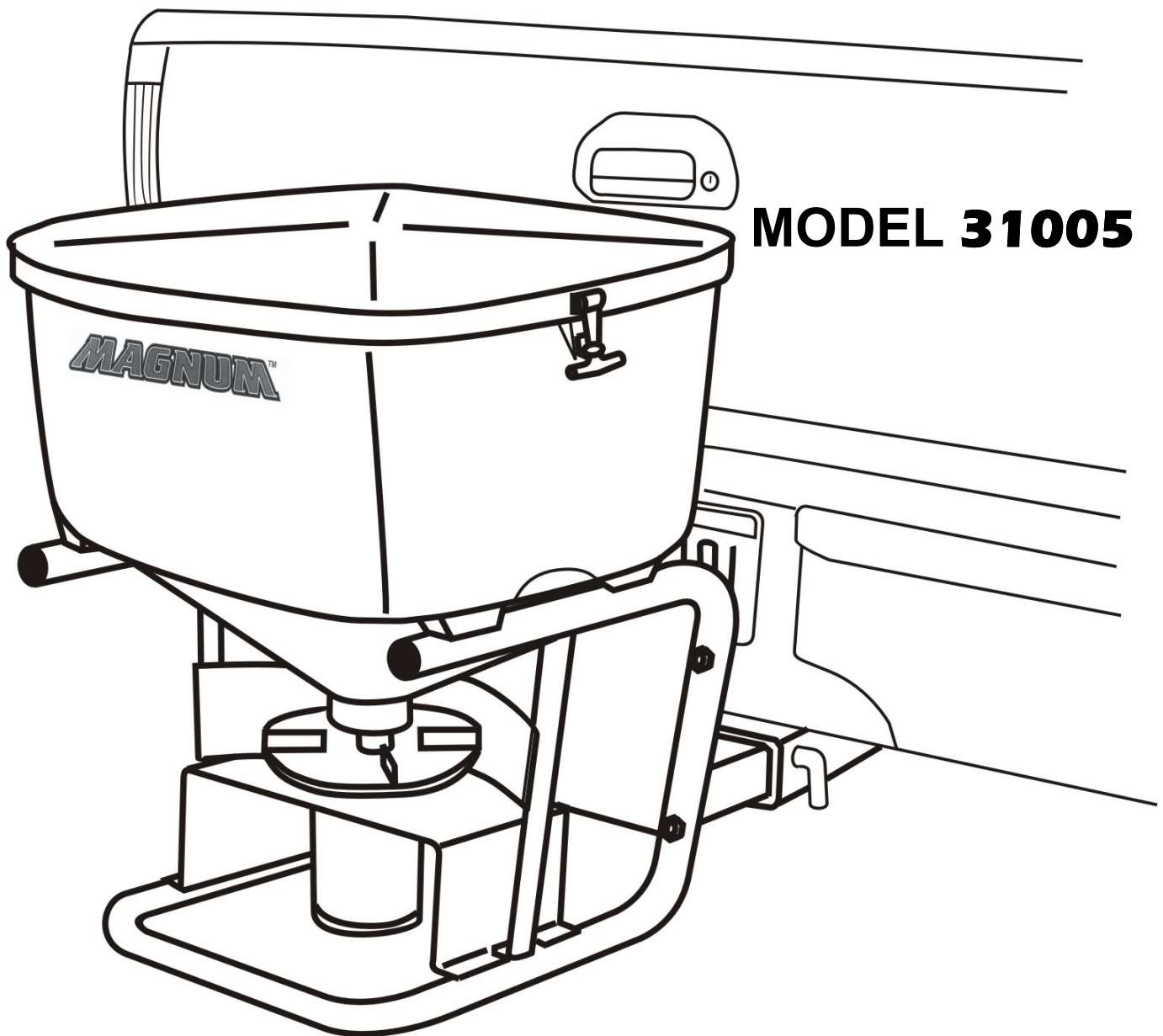


# MAGNUM™



**MODEL 31005**

## OWNER'S MANUAL

# SPREADER ASSEMBLY

## GENERAL INFORMATION

**CAUTION:** Always disconnect battery before beginning installation.

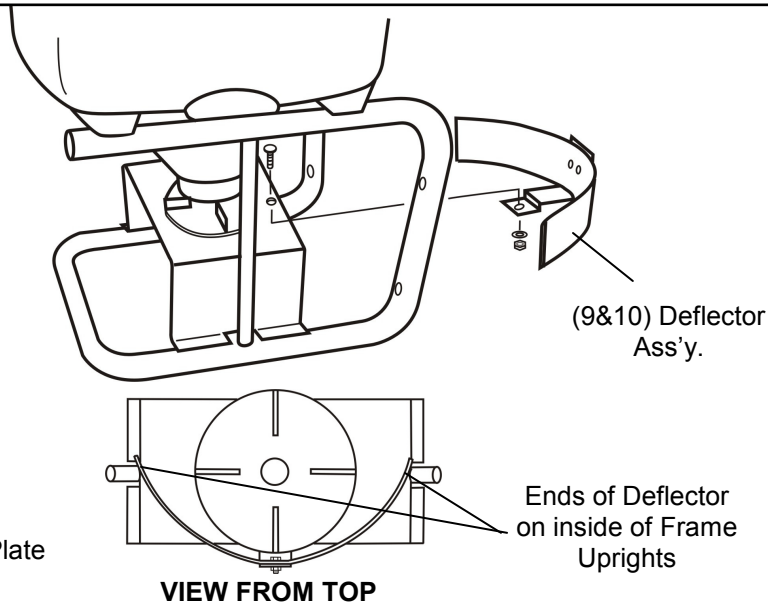
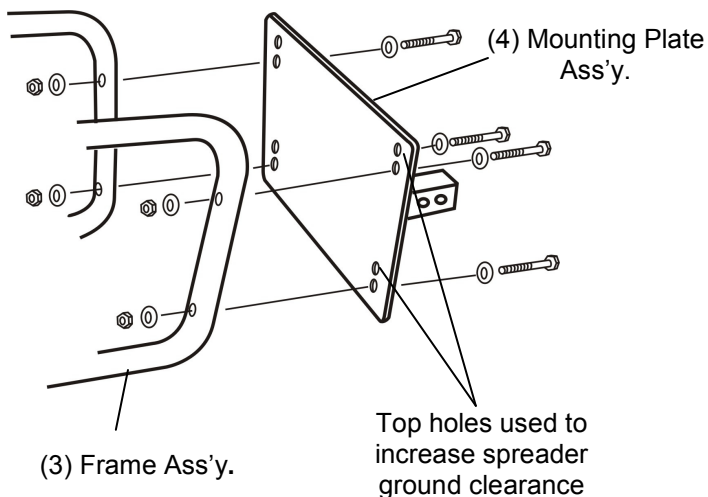
Unpack spreader and check contents against the parts list to determine all are correct and included, and also to familiarize yourself with them.

Be sure to tighten bolts per the specified torque chart shown on page 6.

Meyer Products assumes no responsibility for installations not made in accordance with these instructions.

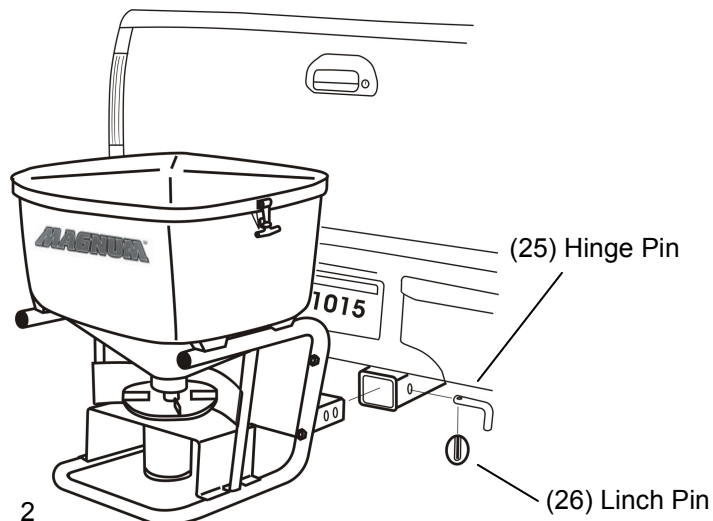
**1. NOTE: The Mounting Plate Assembly (4) is factory mounted to the Frame Assembly (3) in reverse for shipping.**

Remove the Mounting Plate Assembly retaining the two 3/8-16 x 2 3/4 Hex Bolts (6). Attach the Deflector Assembly (11&14) to the Frame Assembly (3) as shown with one 5/16-18 x 1" Carriage Hd Bolt (8), Lockwasher (12), and Hex Nut (13). Make sure the ends of the Deflector are resting on the **inside** of the frame uprights as shown.



**2. Assemble Mounting Plate Assembly (4) to Frame Assembly (3) using four 3/8-16 x 2 3/4" Hex Bolts (6), eight Flat Washers (5), and four Locknuts (7) as shown. Tighten bolts to 20 Ft. Lbs. NOTE: Extra holes are provided in the Mounting Plate to increase spreader ground clearance if required.**

**3. Slide spreader assembly into receiver hitch on vehicle and insert Hinge Pin (25) through corresponding hole on receiver and Hitch. Secure with Hinge Pin with Linch Pin (26).**



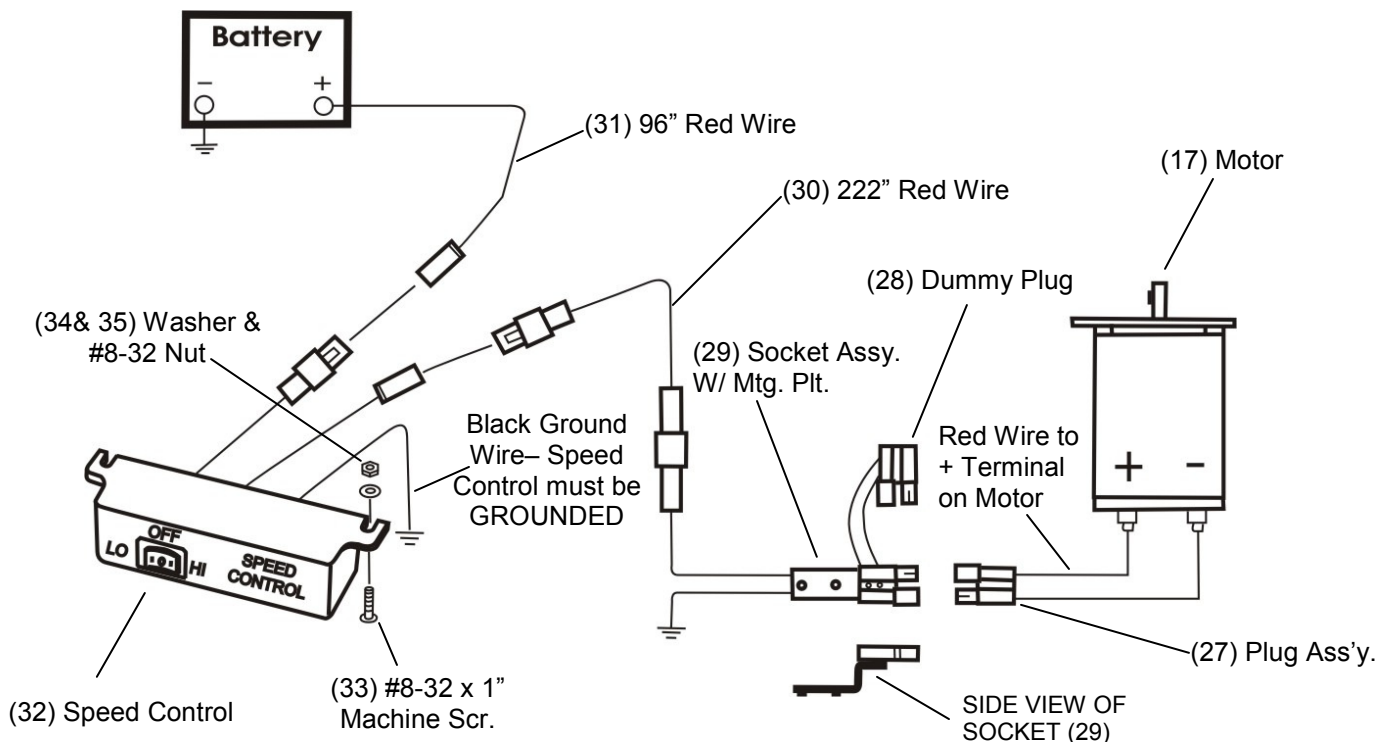
# ELECTRICAL ASSEMBLY

## CAUTION!!!

**READ THIS! . . Serious damage to speed control will result if the following precautions are not followed:**

1. Do not install Speed Control until all other wiring is installed and Motor is test-run.
2. Be certain to connect red wire to (+) terminal of Motor. Connecting to (-) will burn up Speed Control. Tape this connection so it cannot accidentally be grounded.
3. After wires are in place, but before connecting Speed Control, connect a jumper wire from the Red Wire (30) to the Red Wire (31). The motor should run, indicating proper grounding and wire installation. Remove jumper wire.
4. After Motor has successfully been test run, the Speed Control can be installed. Do not allow the red wire from the control to accidentally contact any grounded object, including the control case itself.

Failure to follow these precautions could cause the red (output) wire from the Speed Control to make contact with ground, causing the transistor to burn up. Any grounding or shorting of the red (output) wire which results in a burned transistor is **not** covered by warranty.



**1.** Choose a location for the Speed Control (32) that is convenient for the driver. Attach Speed Control to vehicle using two #8-32 x 1" Machine Screws (33), Washers (34), and Nuts (35) provided. Make certain Speed Control is grounded by attaching ground wire to a good vehicle ground.

**2.** Attach the end of the 96" Red Wire (31) to positive terminal of the battery and route the plug end to the location of the Speed Control. **DO NOT ATTACH TO SPEED CONTROL AT THIS TIME.**

# ELECTRICAL ASSEMBLY-CONTINUED

**3.** Take the 222" Red Wire (30) and route the large rubber plug end to the rear of the vehicle, securely tying to the vehicle frame. Be sure wire is clear of any sharp or moving objects or the vehicle's exhaust system.

**CAUTION:** Some vehicles are designed to operate with exhaust temperatures as high as 1800 degrees F. This can easily damage any wires which are routed too closely or allowed to come in contact with any portion of the exhaust system. Be certain all wires are securely installed away from the exhaust system.

**4.** Attach the Socket (29) to vehicle bumper or other solid mounting point using two #8-32 X 1" screws (33), washers (34) and #8-32 nuts (35). Be certain the motor leads will not be strained when the plug is attached. Plug the 222" Red Wire into the socket. Secure black wire from socket to a good grounding point on vehicle frame. Clean all rust or undercoating from this area.

**5.** Attach red wire from Motor Plug (27) to positive (+) terminal of motor. Tape this connection!! Attach black wire to negative (-) terminal of motor. Push plug into socket. When spreader is removed, protect the socket using the dummy plug (28).

**6.** Perform the motor run test as described at the top of page #3 under **CAUTION**. If motor operates, the 222" Red Wire (30) and the 96" Red Wire (31) can be attached to their respective terminals on the Speed Control (32).

## OPERATION

**1.** Fill hopper with #1 rock salt from bags. **Do not use Bulk Material.**

**CAUTION:** When filling Hopper, make certain there are no large objects contained in the material which could cause the Auger Spinner to bind and stop operation of the Spreader Motor. If this should happen, the fuse becomes overloaded and will automatically break the circuit. Allow the Motor to cool and clear the Auger before reusing. Replace fuse with one with the same amp rating.

**2.** It is recommended to check for free rotation of the Auger Spinner before operating the spreader due to possible buildup of material between the Auger and the neck of the Hopper.

**3.** The spreader is equipped with a 2-speed switch. Hi speed will provide a full width pattern while low speed provides a reduced width for smaller areas.

# MAINTENANCE

Maintenance requirements for the spreader during the winter season are relatively simple. Periodically inspect for loose bolts and nuts. Inspect for improper ground, broken wires, frayed or cracked wire insulation. Replace as necessary.

To keep maintenance to a minimum, the following cautions are suggested:

- 1.** Do not attempt to clear Auger or Spinner or to perform any other maintenance or repair work on this spreader unless the vehicles ignition switch is in the "OFF" position.
- 2.** Salt must be loose and free of lumps and must be kept dry.
- 3.** Empty Hopper after each use and hose the spreader off.
- 4.** When spreader is no longer being used, remove it from the vehicle. Remove any rust or corrosion from the metal parts, then prime and paint. It is recommended to detach the 96" Red Wire (28) to prevent activation when not required. Store spreader in a suitable location and attach the Dummy Plug (28) to socket to protect from corrosion.

# WARRANTY

## **Magnum Spreader warrants to Purchaser the following:**

Magnum Spreader warrants to the original purchaser for a period of one year from the date of purchase of Magnum Spreader brand spreader products that they will be free from defects in materials or workmanship, with the exceptions stated below. No person is authorized to change this warranty or to create any additional warranty on Magnum Spreader products.

Magnum Spreader will repair any product that proves to be defective in materials or workmanship. In the event repair is not possible or practical (as determined by Magnum Spreader in its sole discretion), Magnum Spreader will either replace the product with a new product of similar model and price, or refund the full purchase price, as determined by Magnum Spreader. Customer must keep the complete spreader system serviced/maintained as recommended by Magnum Spreader.

This warranty does not cover:

- Problems caused by failure to follow the product instructions, or failure to maintain the product as described in the Operator's Manual;
- Damage resulting from rust, corrosion
- Damage caused by usage that is not in accordance with product instructions (use of the spreader for any purpose other than spreading approved material is considered misuse and abuse);
- Any spreader, or any part, component, or assembly thereof, which has been modified or altered;
- Problems caused by using accessories, parts, or components not supplied by Magnum Spreader;
- Cost of tax, freight, transportation or storage charges, environmental charges, solvents, sealants, lubricants or any other normal shop supplies.
- Problems caused by collision, fire, theft, vandalism, riot, explosion, lightning, earthquake, windstorm, hail, water, flood, or any other Acts of God;
- Liability for damage to property, or injury to, or death of any person arising out of the operation, maintenance or use of the covered product;
- Products with missing or altered serial numbers;

## **How To Get Service:**

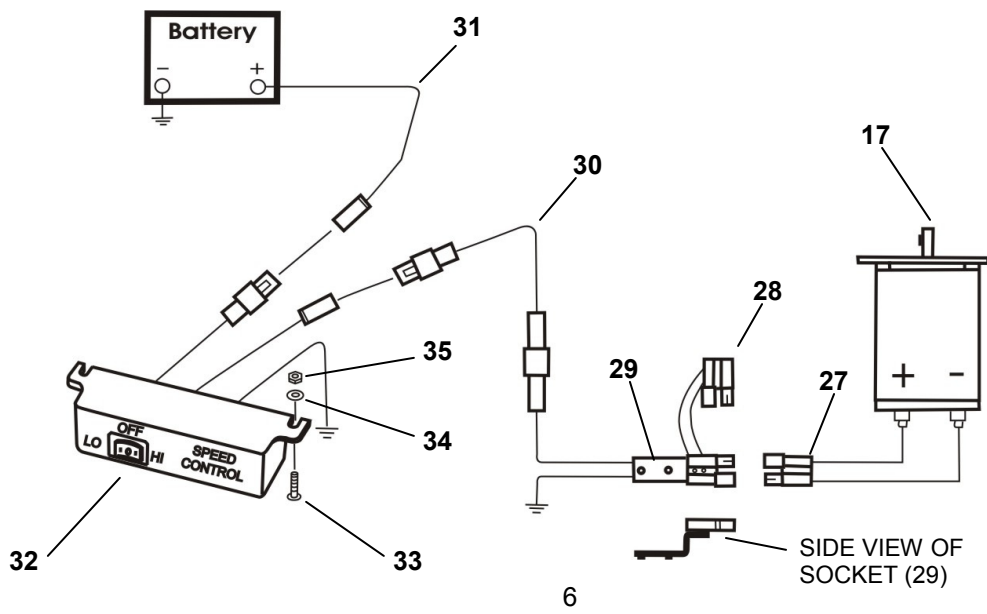
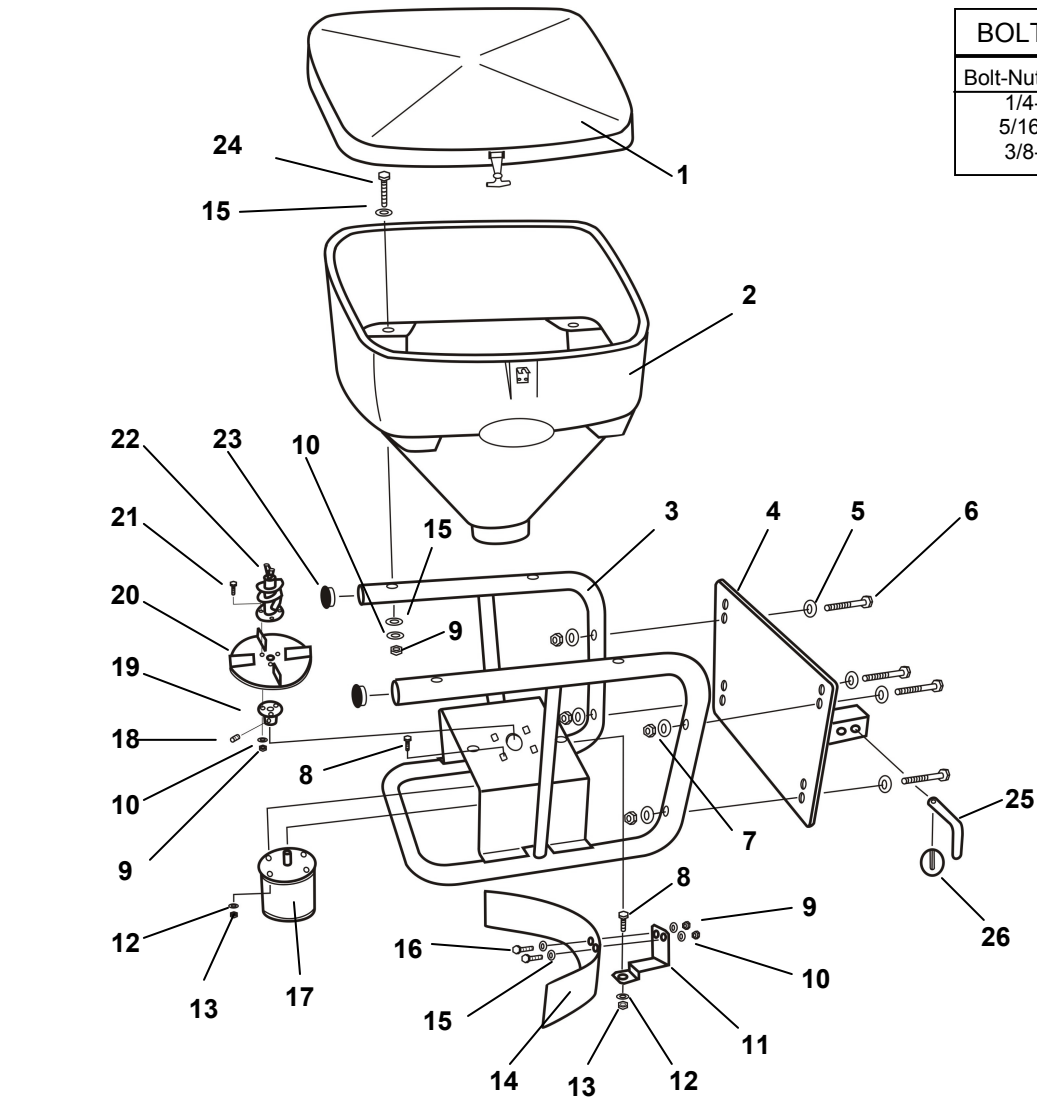
- It is the responsibility of the original purchaser to establish the warranty period by verifying the original delivery date. A bill of sale, cancelled check or some other appropriate payment record may be kept for that purpose. It is recommended, but not required, that the consumer verify the original delivery date by immediately registering the product warranty on-line at [www.magnumspreaders.com](http://www.magnumspreaders.com).

## **How State Law Applies:**

This warranty gives you specific legal rights, and you may also have other rights which vary from state to state.

# PARTS DIAGRAM- MODEL 31005

BOLT TORQUE CHART	
Bolt-Nut Size	Torque- Ft. Lbs.
1/4-20	6.0
5/16-18	11.0
3/8-16	20.0



# PARTS LIST- MODEL 31005

PART OF OUR SERVICE IS PROVIDING REPLACEMENT PARTS. Parts may be obtained through your local distributor. Be sure to give:

IF YOUR LOCAL DISTRIBUTOR CANNOT SUPPLY PARTS, CONTACT:



## Magnum Spreader

18513 Euclid Ave

Cleveland, Ohio 44112

216- 486-1313 [www.magnumspreader.com](http://www.magnumspreader.com)

1. SPREADER MODEL NUMBER
2. SPREADER NAME
3. PART NUMBER
4. NAME OF PART AS SHOWN

Item	Part No.	Qty.	Description
1	34419	1	Lid Assembly-Hopper
2	34418	1	Hopper Assembly
3	34413	1	Frame Assembly
4	34414	1	Mounting Plate Assembly
5	20353	8	3/8" ID. Flat Washer
6	20069	4	3/8-16 x 2 3/4" Gr. 5 Hex Bolt
7	20314	4	3/8-16 Hex Locknut (Eslock)
8	63175	5	5/16-18 x 1" Carriage Bolt
9	20524	9	1/4-20 Hex Nut
10	20325	9	1/4 ID. Lockwasher
11	34415	1	Bracket-Deflector
12	20326	5	5/16 ID. Lockwasher
13	20525	5	5/16-18 Hex Nut
14	34401	1	Deflector
15	20351	10	1/4 ID. Flat Washer
16	20002	2	1/4-20 x 5/8" Hex Bolt
17	36402	1	Motor 12V D.C.
18	21834	1	Set Screw 3/8-24 x 3/8 Cup Pt.
19	36152	1	Spinner Hub Weldment
20	36414	1	Spinner Plate (Poly)
21	20050	3	1/4-20 x 1" Hex Bolt
22	36151	1	Auger Weldment
23	34416	2	Plug-Tube
24	63204	4	1/4-20 x 2 1/4" Hex Bolt
25	11101	1	Hinge Pin
26	22083	1	Linch Pin
27	36241	1	Plug Assembly
28	36248	1	Dummy Plug
29	36240	1	Socket Assembly w/ Mounting Plate
30	36242	1	Wire, Red, 222"
31	36247	1	Wire, Red, 96"
32	34417	1	Speed Control
33	—	4	#8-32 x 1" Round Hd. Machine Screw
34	—	4	#8 Flat Washer
35	—	4	#8-32 Hex Nut

Magnum Products reserves the right, under its continuing product improvement program, to change construction or design, specifications and prices without notice or without incurring any obligation.

