



Fisher Engineering

P.O. Box 529 Rockland, Maine 04841

March 7, 2006
Lit. No. 26203, Rev. 03

Minute² SYSTEM

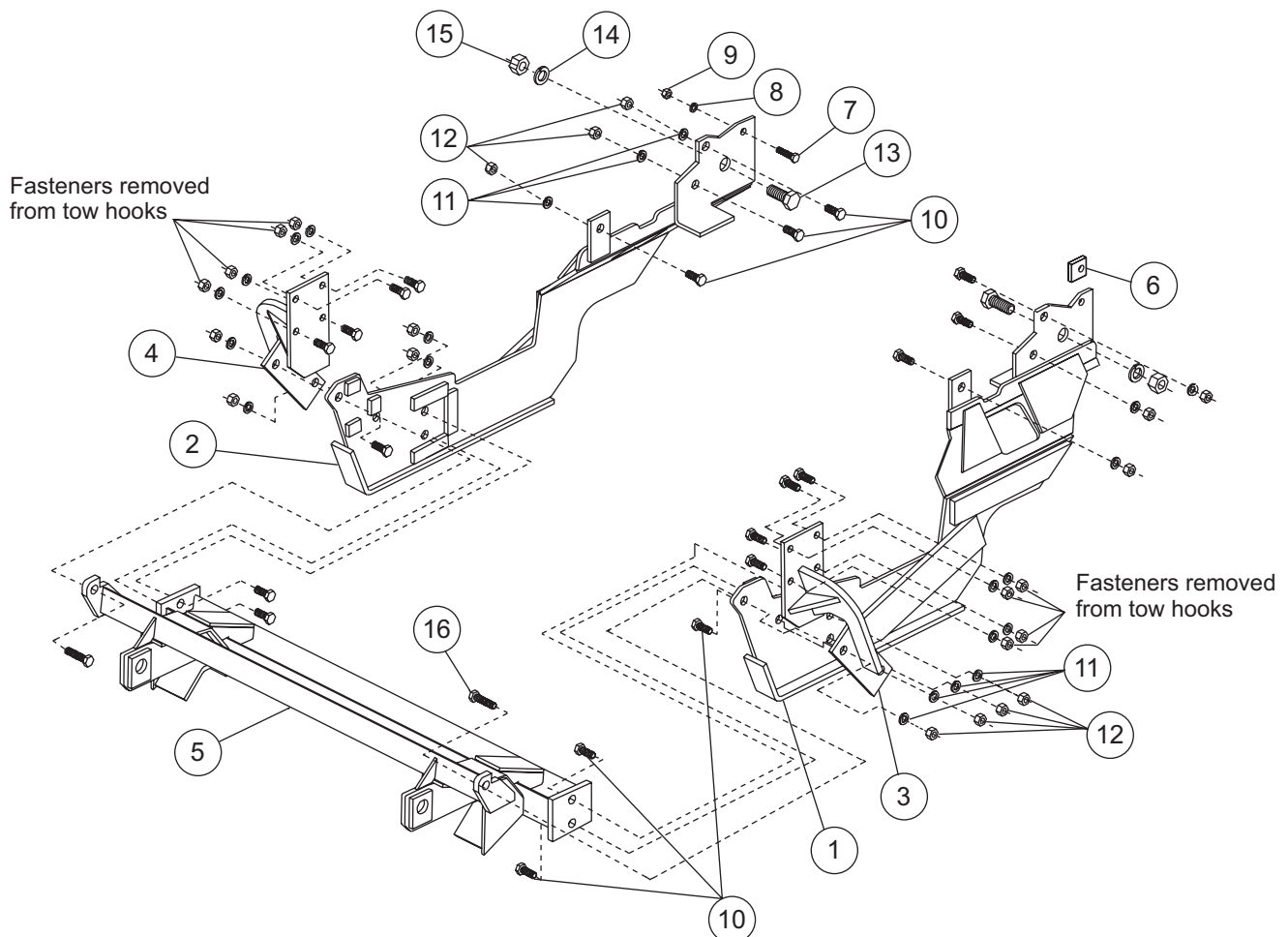
MOUNT KIT

International 4700/4800/4900

1989 - 00

(Kit only fits vehicles equipped with 3 x 50" or 3 x 54" front springs.)

Parts List



7151-2

7151-2 Mount Kit							
Item	Part	Qty	Description	Item	Part	Qty	Description
1	27029	1	Pushplate – DS	5	21338	1	Commercial Connecting Beam
2	21343	1	Pushplate – PS	6	8671	1	Spacer
3	21332	1	Hanger – DS	ns	21350	1	Bolt Bag – 7151
4	21333	1	Hanger – PS				
21350 Bolt Bag – 7151							
7	90210	1	1/2-13 x 1-1/2 Hex Cap Screw G5	12	91416	14	5/8-11 Hex Nut G5
8	91205	1	1/2 Spring Lock Washer	13	90640	2	1-8 x 2 Hex Cap Screw G5
9	90337	1	1/2-13 Hex Nut G5	14	90641	2	1 Spring Lock Washer
10	90127	12	5/8-11 x 1-1/2 Hex Cap Screw G5	15	90642	2	1-8 Hex Nut G5
11	90366	14	5/8 Spring Lock Washer	16	90129	2	5/8-11 x 2 Hex Cap Screw G5
ns = not shown				G = grade			

Copyright © 2006 Douglas Dynamics, L.L.C. All rights reserved. This material may not be reproduced or copied, in whole or in part, in any printed, mechanical, electronic, film or other distribution and storage media, without the written consent of Fisher Engineering. Authorization to photocopy items for internal or personal use by Fisher Engineering outlets or snowplow owner is granted.

Fisher Engineering reserves the right under its product improvement policy to change construction or design details and furnish equipment when so altered without reference to illustrations or specifications used. Fisher Engineering or the vehicle manufacturer may require or recommend optional equipment for snow removal. Do not exceed vehicle ratings with a snowplow. Fisher Engineering offers a limited warranty for all snowplows and accessories. See separately printed page for this important information. The following are registered (®) trademarks of Douglas Dynamics, L.L.C.: FISHER®, Minute Mount® 2.

Printed in U.S.A.