



Fisher Engineering

P.O. Box 529 Rockland, Maine 04841

March 17, 2003

Lit. No. 26207



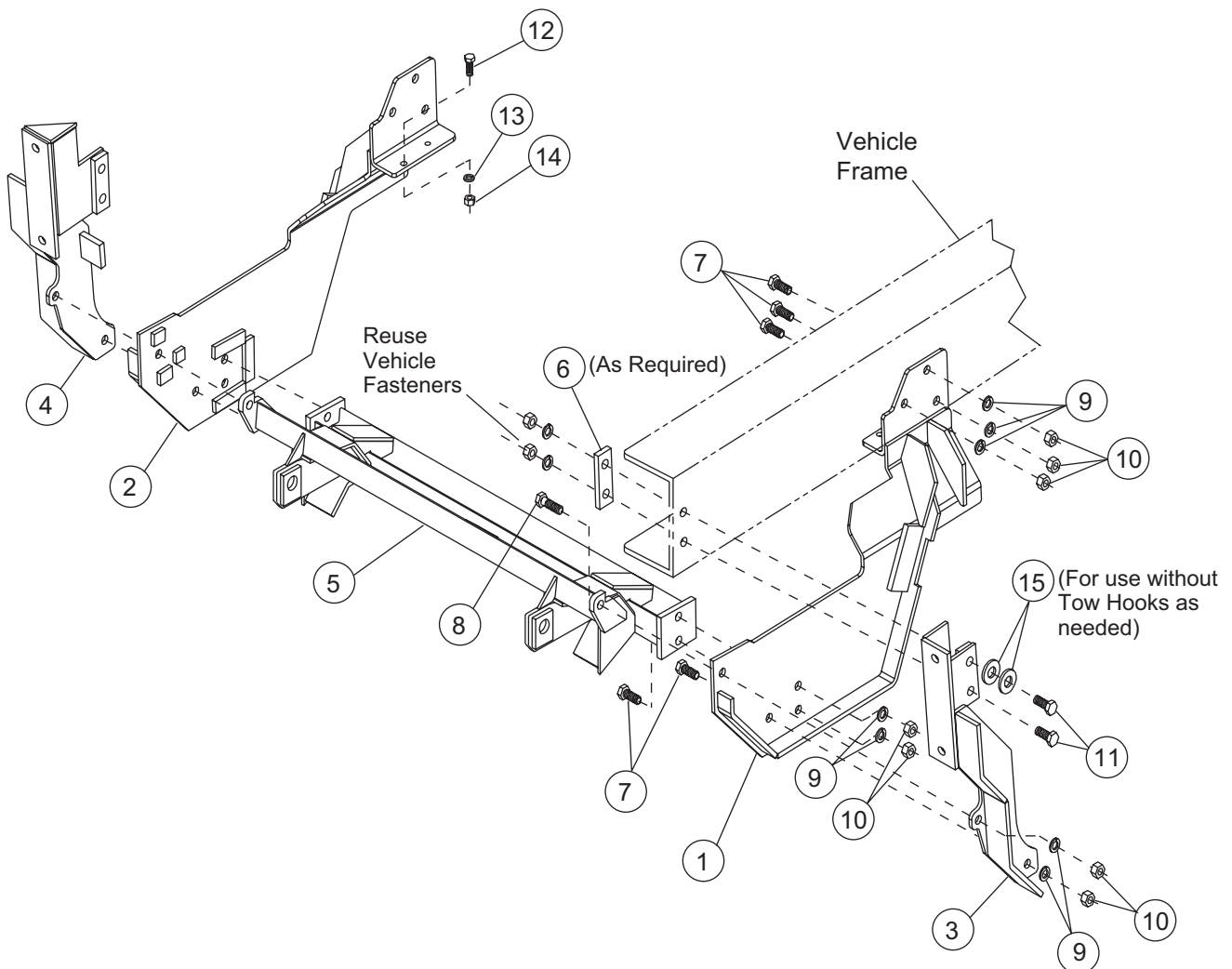
Attachment Kit Parts List

Chevy Kodiak (C5500/6500/7500)

1997-2002

GMC Topkick

1997-2002



7154-1

7154-1 Attachment Kit						
Item	Part	Qty	Description	Item	Part	Qty Description
1	21662	1	Pushplate-Driver Side	5	21338	1 Commercial Connecting Beam
2	21663	1	Pushplate-Passenger Side	6	21718	2 Spacer
3	21657	1	Front Hanger-Driver Side	ns	20810	1 Bolt Bag-7154
4	21658	1	Front Hanger-Passenger Side			
20810 Bolt Bag						
7	90127	12	5/8-11 x 1-1/2 Hex Cap Screw G5	12	90210	2 1/2-13 x 1-1/2 Hex Cap Screw G5
8	90129	2	5/8-11 x 2 Hex Cap Screw G5	13	91205	2 1/2 Spring Lock Washer
9	90366	14	5/8 Spring Lock Washer	14	90337	2 1/2-13 Hex Nut G5
10	91416	14	5/8-11 Hex Nut G5	15	63923	8 5/8 Flat Washer
11	90644	4	M16 x 2.0mm x 110mm Hex Cap Screw G10.9			
ns = not shown		G = grade		M = metric		

Copyright© 2003 Douglas Dynamics, L.L.C. All rights reserved. This material may not be reproduced or copied, in whole or in part, in any printed, mechanical, electronic, film or other distribution and storage media, without the written consent of Fisher Engineering. Authorization to photocopy items for internal or personal use by Fisher Engineering outlets or snowplow owner is granted.

Fisher Engineering reserves the right under its product improvement policy to change construction or design details and furnish equipment when so altered without reference to illustrations or specifications used. Fisher Engineering and the vehicle manufacturer may require and/or recommend optional equipment for snow removal. Do not exceed vehicle ratings with a snowplow. Fisher Engineering offers a limited warranty for all snowplows and accessories. See separately printed page for this important information. The following are registered (®) trademarks of Douglas Dynamics, L.L.C.: FISHER®, Minute Mount®.

Printed in U.S.A.