

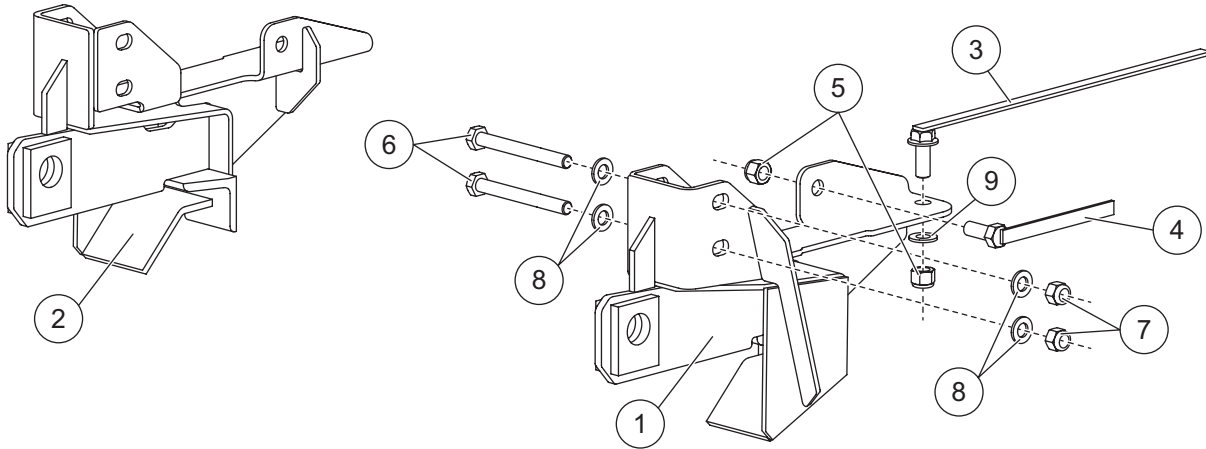


Minute² SYSTEM

MOUNT KIT

Chevrolet Colorado	2004 - 09
GMC Canyon	2002 - 09
Chevrolet Colorado w/o Z71 or Off-Road	2010 - 12
GMC Canyon w/o Z71 or Off-Road	2010 - 12

Parts List



7175 Mount Kit							
Item	Part	Qty	Description	Item	Part	Qty	Description
1	26670	1	Pushplate – DS	3	63330	2	1/2-13 x 1-1/4 Flanged Cap Screw G5 w/Handle
2	26680	1	Pushplate – PS	ns	26679	1	Bolt Bag 7175
26679 Bolt Bag 7175							
4	21316	2	1/2-13 x 1-1/4 Hex Cap Screw G5 w/Handle	7		4	M12 x 1.25 Hex Locknut G9
5		4	1/2-13 Hex Locknut GB	8		8	M12 Flat Washer, Regular
6		4	M12 x 1.25 x 110 Hex Cap Screw G8.8	9		2	1/2 Hardened Flat Washer
ns = not shown			G = Grade			M = Metric	

Copyright © 2016 Douglas Dynamics, LLC. All rights reserved. This material may not be reproduced or copied, in whole or in part, in any printed, mechanical, electronic, film or other distribution and storage media, without the written consent of Fisher Engineering. Authorization to photocopy items for internal or personal use by Fisher Engineering outlets or snowplow owner is granted.

Fisher Engineering reserves the right under its product improvement policy to change construction or design details and furnish equipment when so altered without reference to illustrations or specifications used. Fisher Engineering or the vehicle manufacturer may require or recommend optional equipment for snow removal. Do not exceed vehicle ratings with a snowplow. Fisher Engineering offers a limited warranty for all snowplows and accessories. See separately printed page for this important information. The following are registered (®) trademarks of Douglas Dynamics, LLC: FISHER®, Minute Mount® 2.

Printed in U.S.A.
