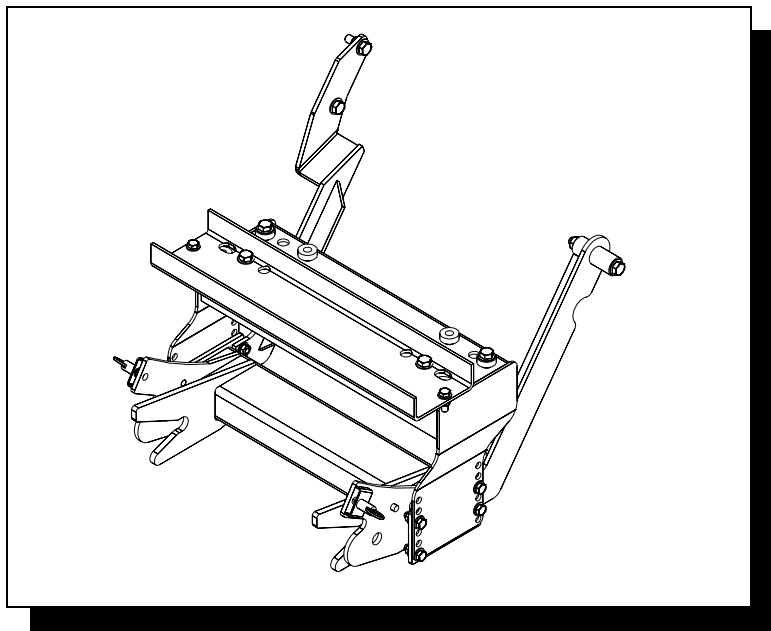


# **BLIZZARD**<sup>®</sup> **SNOWPLOWS**

## UNDERCARRIAGE INSTALLATION INSTRUCTIONS



UNDERCARRIAGE **32034**

HARDWARE KIT **61158**

FOR MODELS:

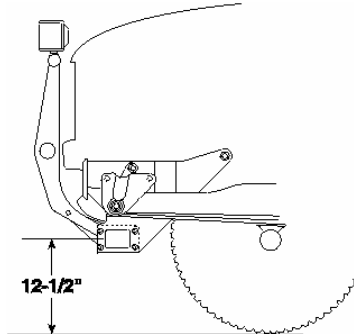
*DODGE W200 & W250 PICKUP (1973-1993)*

*DODGE W300 & W350 PICKUP (1973-1993)*

## INSTALLATION INSTRUCTIONS



A label identifying the undercarriage assembly part number and push beam part number is applied to the rear of the push beam.



The recommended push beam height for this undercarriage assembly is 12-1/2" from the center of the push beam to level ground. DO NOT exceed 14-1/2" in height for this undercarriage.

**WARNING:** Always perform vehicle undercarriage installations with the keys removed from the vehicle's ignition. Properly tag the ignition switch to alert others work is being performed on the vehicle.

Most newer trucks are equipped with driver and passenger's side air bags. DO NOT remove, disable, or reposition any sensory equipment related to the safe operation of the air bags.

ALWAYS follow the vehicle manufacturer's recommendations for installing snowplowing equipment.

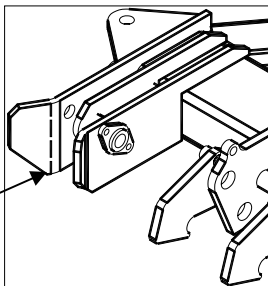
FAILURE TO COMPLY WITH THE ABOVE WARNINGS MAY RESULT IN SERIOUS INJURY OR DEATH.

**CAUTION:** If your vehicle is equipped with oversize tires, they may come into contact with the undercarriage hanger plates when turning the vehicle. Adjust steering stops if possible.

### \*\*\*\*\*IMPORTANT NOTICE\*\*\*\*\*

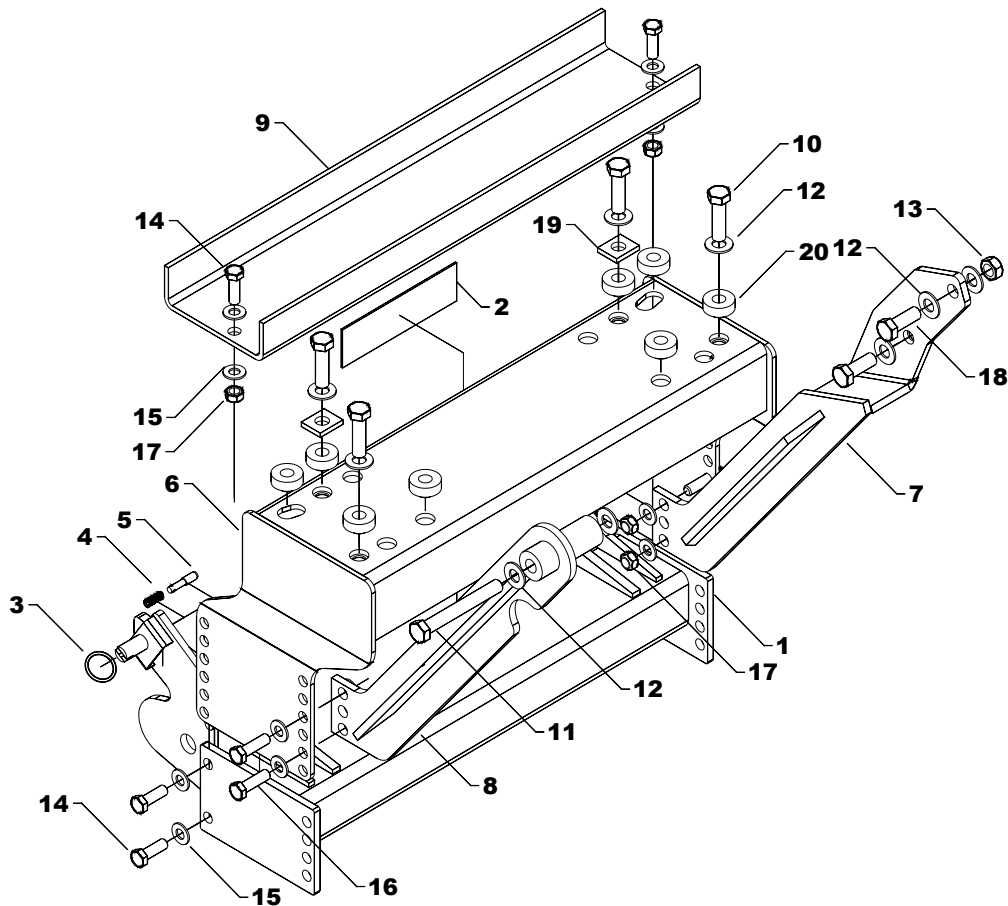
Due to the fit-up of the undercarriage for this vehicle model, it is necessary to remove the outer "ears" on the A-frame to properly mount the snowplow to the undercarriage. The "ears" are located next to the access holes for the plow hitch pins.

Trim here,  
both sides.



1. Remove the bumper from the vehicle and retain all hardware for reinstallation.
2. Position the Hanger Plate Reinforcement Plate (**Ref 9**) into the truck frame rail. *NOTE: The plate should rest on the frame rail with the holes toward the rear of the truck.* Align the outside holes in the plate with the holes in the frame rails. Secure the plate to the vehicle using bolts (**Ref 14**) washers (**Ref 15**) and nuts (**Ref 17**). Finger tighten the hardware until all undercarriage parts are in place.
3. Mount the Hanger Plate Weldment (**Ref 6**) to the Reinforcement Plate and front crossmember. *NOTE: Depending on the model of your vehicle, the hole locations in the crossmember may be different. Use the holes which center the weldment best.* Insert the bushings (**Ref 20**) and spacers (**Ref 19**), if needed, into position. Secure the front of the hanger plate to the rear of the reinforcement plate and the crossmember using bolts (**Ref 10**), washers (**Ref 12**) and nuts (**Ref 13**).
4. Mount the front holes of the pushbeam (**Ref 1**) square with the bottom of each hanger plate using bolts (**Ref 14**), washers (**Ref 15**) and nuts (**Ref 17**).
5. Align the hole in the drivers side support arm (**Ref 8**) with the hole on the frame located behind the steering box. *NOTE: The support arm mounts on the inside of the frame rail and leaf spring.* Secure the arm with bolt (**Ref 11**), washers (**Ref 12**) and nut (**Ref 13**).
6. Align the hole in the passenger side support arm (**Ref 7**) with the mount hole on the frame located approximately 14" back from the core support mount. *NOTE: The support arm mounts on the outside of the frame rail and inside the leaf spring.* Secure the arm with bolt (**Ref 18**), washers (**Ref 12**) and nut (**Ref 13**).
7. Align the holes in the support arms with the rear mount holes on the inside of the hanger plate and pushbeam. Secure with bolts (**Ref 16**), washers (**Ref 15**) and nuts (**Ref 17**).
8. Level the pushbeam with the floor and tighten hardware to torque specifications
9. Replace the bumper.
10. Position the **Light Tower** into the mount pockets on the push beam. Each pocket has a lock pin that secures both light tower arms. Pull out and twist each ring handle to temporarily unlock the pins. Place the light tower into the pockets and relock the pins. Mount each **Plow Headlight** to the light tower with the hardware kit provided.
11. Plug the connectors from the snowplow headlights into the connectors on the vehicle wire harness. Adjust both lights with the plow in the raised position.

## UNDERCARRIAGE PARTS



REF	PN	QTY	DESCRIPTION	NOTES
-	32034	1	Asm, Undercarriage	INCLUDES 1-20
-	61158	1	Kit, Hardware Dodge UC	INCLUDES 10-20
1	30053	1	Weldment, Push Beam 3 x 5 x 26.25"	
2	63161	1	Decal, Push Beam 2-1/4" x 9-3/4"	
3	61309	2	Ring, Standard Split, 1.48" O.D	
4	61000	2	Spring, Draw Latch Lock Pin	
5	40079	2	Pin, 3/8" DIA. x 1-3/4" SS	
6	32023	1	Weldment, Hanger Plate	
7	32031	1	Support Arm, Pass. Side	
8	32032	1	Support Arm, Drivers Side	
9	32187	1	Plate, Hanger Plate Reinforcement	
10	61067	4	Screw, 5/8-11 x 2-1/4" HHCS GR8 YZ	
11	61551	1	Screw, 5/8-11 x 5" HHCS GR8 YZ	
12	61064	12	Washer, 5/8" SAE Hardened	
13	61063	6	Nut, 5/8"-11 Top Lock Z	
14	61055	6	Screw, 1/2-13 x 1-1/2 HHCS GR8 YZ	
15	61026	20	Washer, 1/2" SAE Hardened	
16	61150	4	Screw, 1/2-13 x 1-3/4" HHCS GR8 YZ	
17	61020	10	Nut, 1/2-13 Top Lock Z	
18	61060	1	Screw, 5/8-11 x 1-3/4" HHCS GR8 YZ	
19	32035	2	Spacer, 1-1/2" x 1-1/4" x 1/4"	Only needed for 1 ton
20	52011	8	Bushing, 1-1/2 O.D. x 5/8" I.D. x 3/4" Stepped	8 required for 3/4 ton 6 required for 1 ton
-	32036	-	Kit, Bushing & Spacer	Includes Ref 19 & 20

Note: The reference numbers listed identify parts shown in the illustration above. These numbers are specific to this illustration only. Always review the part number given for proper component identification. Blizzard Corporation reserves the right, under its Continuous Improvement Policy, to change construction or design details and furnish equipment when so altered without reference to illustrations or specifications.

## HEADLIGHT CONVERSION HARNESS GUIDE

VEHICLE APPLICATION	HEADLIGHT CONNECTOR	HEADLIGHT DESCRIPTION	HEADLIGHT NUMBERS	CONVERSION HARNESS
1973-1993 DODGE W200 & W250 PICKUP 1973-1993 DODGE W300 & W350 PICKUP	2B/2D	DUAL RECTANGULAR OR DUAL ROUND HEADLAMP	6014, H6024, H6059, 6052, H6054, HP6054	62220

Note: Headlight conversion harness kits are not included with undercarriages. All headlight conversion harness kits sold separately.

### TORQUE SPECIFICATIONS (For reference only)



Grade Identification Marking for J429-Grade 5 Bolt



Grade Identification Marking for J429-Grade 8 Bolt

Nominal Thread Size	SAE J429 – Grade 5			Nominal Thread Size	SAE J429 – Grade 8		
	Clamp Loads (lbs)	Tightening Torque			Clamp Loads (lbs)	Tightening Torque	
		“Lubricated”	“Dry”			“Lubricated”	“Dry”
1/4-20	2,000	6 ft-lbs	8 ft-lbs	1/4-20	2,850	9 ft-lbs	12 ft-lbs
5/16-18	3,350	13 ft-lbs	18 ft-lbs	5/16-18	4,700	18 ft-lbs	25 ft-lbs
3/8-16	4,950	23 ft-lbs	31 ft-lbs	3/8-16	6,950	32 ft-lbs	44 ft-lbs
7/16-14	6,800	37 ft-lbs	50 ft-lbs	7/16-14	9,600	53 ft-lbs	70 ft-lbs
1/2-13	9,050	57 ft-lbs	75 ft-lbs	1/2-13	12,800	80 ft-lbs	107 ft-lbs
9/16-12	11,600	82 ft-lbs	109 ft-lbs	9/16-12	16,400	115 ft-lbs	154 ft-lbs
5/8-11	14,500	113 ft-lbs	151 ft-lbs	5/8-11	20,300	159 ft-lbs	211 ft-lbs
3/4-10	21,300	200 ft-lbs	266 ft-lbs	3/4-10	30,100	282 ft-lbs	376 ft-lbs
7/8-9	29,435	321 ft-lbs	430 ft-lbs	7/8-9	41,550	454 ft-lbs	606 ft-lbs
1-8	38,600	482 ft-lbs	640 ft-lbs	1-8	54,540	680 ft-lbs	900 ft-lbs



Grade Identification Marking for Metric-Grade 8.8 Bolt



Grade Identification Marking for Metric-Grade 10.9 Bolt

Diameter (mm)	Metric Class 8.8			Diameter (mm)	Metric Class 10.9		
	Clamp Loads (Pounds)	Tightening Torque			Clamp Loads (Pounds)	Tightening Torque	
		“Lubricated”	“Dry”			“Lubricated”	“Dry”
5	1,389	3 ft-lbs	5 ft-lbs	5	1,987	5 ft-lbs	7 ft-lbs
6	1,965	6 ft-lbs	8 ft-lbs	6	2,812	8 ft-lbs	11 ft-lbs
7	2,826	10 ft-lbs	13 ft-lbs	7	4,044	14 ft-lbs	19 ft-lbs
8	3,579	14 ft-lbs	19 ft-lbs	8	5,121	20 ft-lbs	27 ft-lbs
10	5,672	28 ft-lbs	37 ft-lbs	10	8,116	40 ft-lbs	53 ft-lbs
12	8,243	49 ft-lbs	65 ft-lbs	12	11,796	70 ft-lbs	92 ft-lbs
14	11,246	77 ft-lbs	103 ft-lbs	14	16,092	111 ft-lbs	148 ft-lbs
16	15,882	125 ft-lbs	167 ft-lbs	16	21,970	173 ft-lbs	231 ft-lbs
18	19,423	172 ft-lbs	229 ft-lbs	18	26,868	238 ft-lbs	317 ft-lbs
20	24,784	244 ft-lbs	325 ft-lbs	20	34,284	338 ft-lbs	450 ft-lbs