



Hopper and Drive Components

Striker™ Hopper Spreader
With Electric Motors

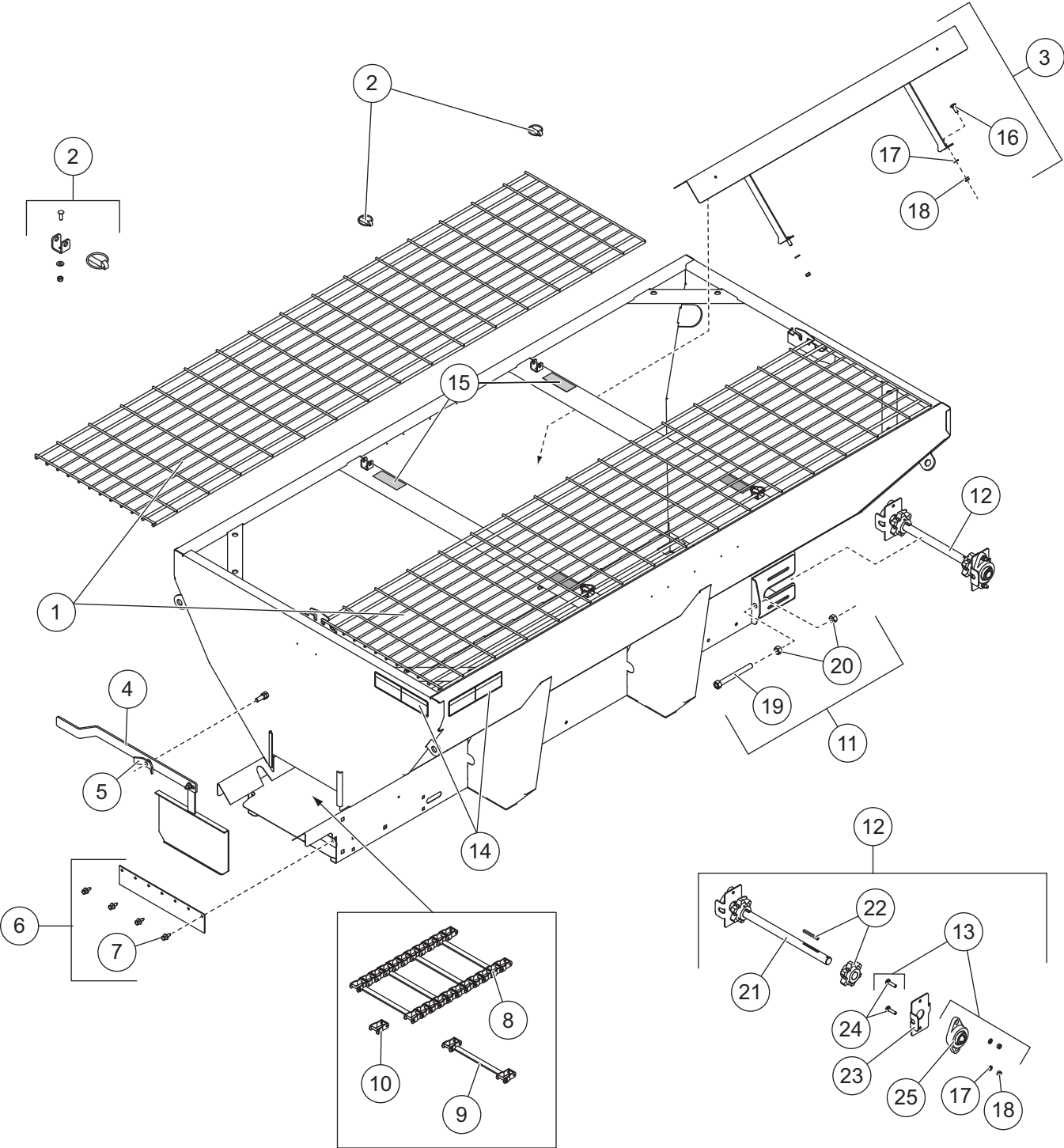
#99030-1, 99031-1, 99035-1, 99039-1

Parts List



This Parts List is for WESTERN® Striker Hopper Spreaders with serial numbers beginning with 170711 and higher.

HOPPER COMPONENTS



www.storksplows.com
Striker™ HOPPER SPREADER

Hopper Components							
Item	Part	Qty	Description	Item	Part	Qty	Description
1	99515	2	Top Screen – 7'	8	68474	1	Pintle Chain (123 Links) 9' Hopper
	99516	2	Top Screen – 8'		94898	1	Pintle Chain (108 Links) 7' & 8' Hprs.
	99517	2	Top Screen – 9' Narrow (3.0 cu yd)	9	68492	1	Conveyor Repair Bar w/Pins & Cotters
	99518	2	Top Screen – 9' Wide (4.5 cu yd)				
2	99578	1	Screen Attachment Kit (set of 4)	10	68475	1	Conveyor Repair Link w/Pins & Cotters
3	99482	1	Inverted V Kit – 7' & 8' Hoppers				
ns	99119	1	Inverted V Kit – 9' Hopper	11	99073	2	Tensioner Bolt Kit
4	99083	1	Feed Gate Assembly w/Wing Nut	12	99480	1	Idler Shaft Assembly Kit
ns	99523	1	Rubber Grip, Feed Gate Handle	13	94953	2	Spreader Bearing Kit
5	65218	1	1/2-13 Wing Nut G5	14	68584	2	Label – Warning/Caution, Spreaders
6	78266	1	Wiper Replacement Kit	15	67272	4	Label – Caution, Do Not Lift
7	99079	1	Rivet Kit, Steel Hopper Wiper (4-pak)	ns	68790	1	Ratchet Straps Kit (4 straps)
Item 3				99482 Inverted V Kit			
16		4*	3/8-16 x 1 Carriage Bolt SS	18		8†	3/8-16 Hex Nut SS
17		8†	3/8 Lock Washer SS				
Item 11				99073 Tensioner Bolt Kit			
19		1	5/8-11 x 6 Take-Up Bolt	20		2	5/8-11 Hex Nut
Item 12				99480 Idler Shaft Assembly Kit			
17		2	3/8 Lock Washer SS	23	99765	2	Bearing Alignment Plate
18		2	3/8-16 Hex Nut SS	24		4	3/8-16 x 1-1/2 Carriage Bolt SS
21	94351	1	Idler Shaft	25	94536	2	Bearing 1.125 ID 2-Bolt Flange
22	99479	2	6-Tooth Sprocket Assembly				
Item 13				94953 Spreader Bearing Kit			
17		2	3/8 Lock Washer SS	24		4	3/8-16 x 1-1/2 Carriage Bolt SS
18		2	3/8-16 Hex Nut SS	25	94536	2	Bearing 1.125 ID 2-Bolt Flange
			SS = Stainless Steel			ns = not shown	G = Grade

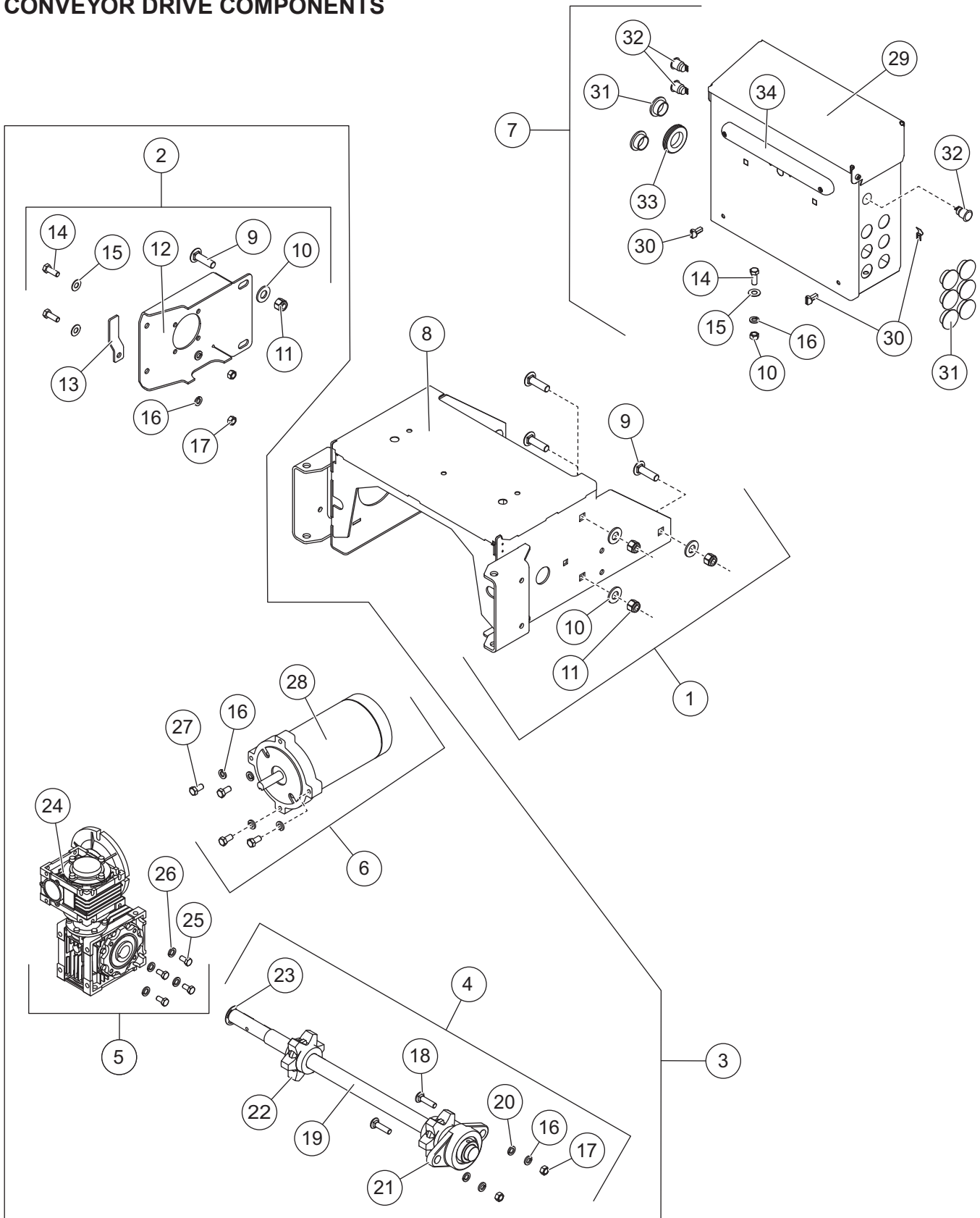
* Qty 6 for 9' hopper.

† Qty 10 for 9' hopper.



Steel Hopper Logo Plates w/Rivets							
Item	Part	Qty	Description	Application			
				7' (1.5 cu yd)	8' (2.0 cu yd)	9' (3.0 cu yd)	9' (4.5 cu yd)
26	96562	2	Side Logo Plate – Small	■	■		■
	96564	2	Side Logo Plate – Large			■	
27	96561	1	Rear Logo Plate – Small	■	■		
	96563	1	Rear Logo Plate – Large			■	■

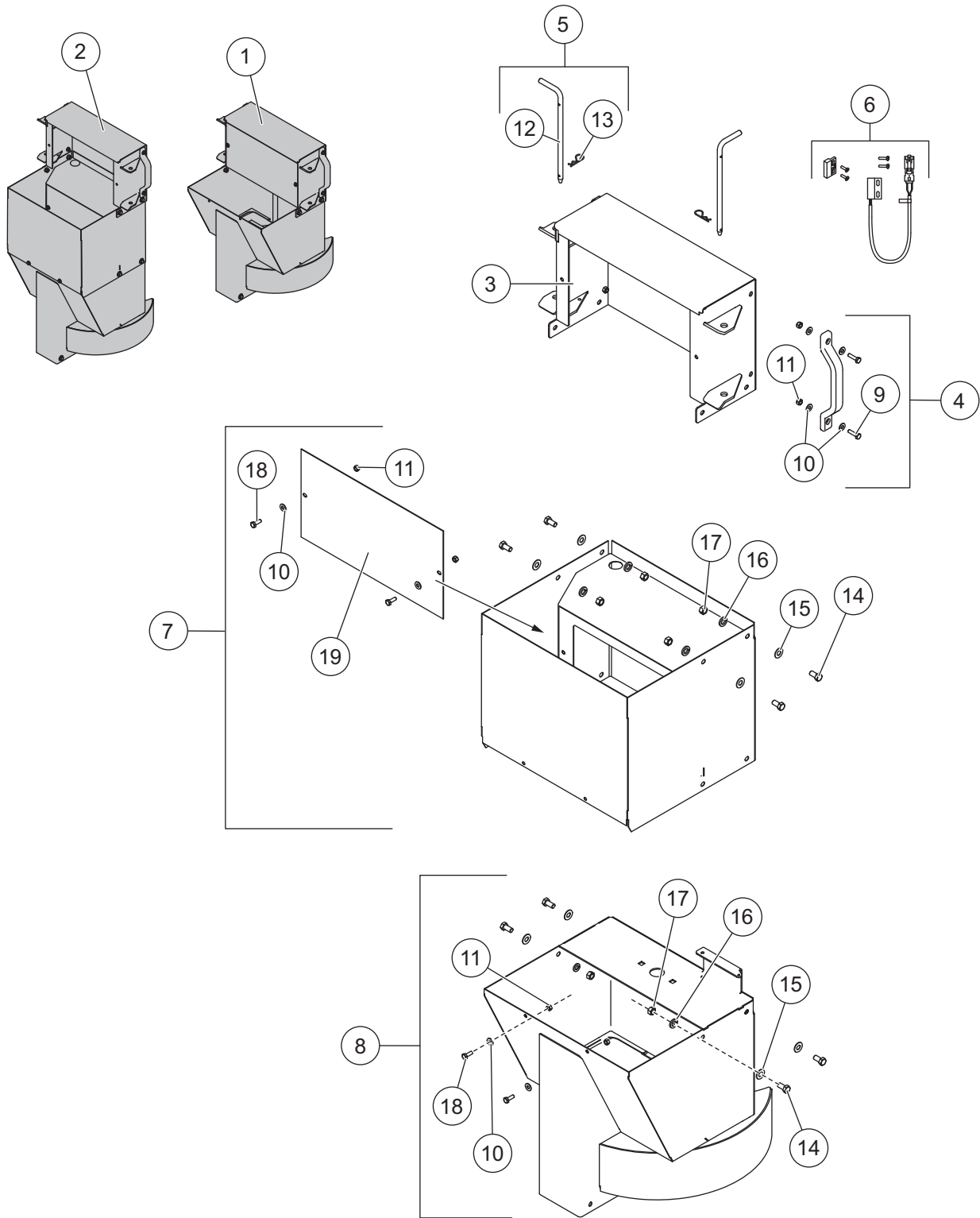
CONVEYOR DRIVE COMPONENTS



Striker™ HOPPER SPREADER

Conveyor Drive Components							
Item	Part	Qty	Description	Item	Part	Qty	Description
1	99092	1	Electric Power Group Mount Kit	ns	86792	1	Gear Box Cover Kit, Primary
2	99089	1	Gear Box Bracket Kit	ns	86799	1	Gear Box Cover Kit, Secondary
3	99091	1	Electric Conveyor Drive Kit	6	99085	1	Conveyor Motor Kit
4	99094	1	Drive Shaft Kit, Electric	7	99077	1	Electrical Box Assembly
5	99087	1	Gear Box Kit	ns	99744	1	Label Kit, SH Electrical Control Box
Item 1 99092 Electric Power Group Mount Kit							
8	99569	1	Electric Power Group Mount	10		6	1/2 Flat Washer SS
9		6	1/2-13 x 1-3/4 Carriage Bolt SS	11		6	1/2-13 Locknut SS
Item 2 99089 Gear Box Bracket Kit*							
9		2	1/2-13 x 1-3/4 Carriage Bolt SS	ns	99775	1	Cable Boot – 8-pin
10		2	1/2 Flat Washer SS	14		2	3/8-16 x 1 Hex Cap Screw SS
11		2	1/2-13 Locknut SS	15		2	3/8 Flat Washer SS
12		1	Gear Box Bracket	16		4	3/8 Lock Washer SS
13		1	Cable Boot Stand	17		2	3/8-16 Hex Nut SS
Item 3 99091 Electric Conveyor Drive Kit							
4	99094	1	Drive Shaft Kit, Electric	6	99085	1	Conveyor Motor Kit
5	99087	1	Gear Box Kit				
Item 4 99094 Drive Shaft Kit							
16		2	3/8 Lock Washer SS	20	91123	2	3/8 Flat Washer SS
17		2	3/8-16 Hex Nut SS	21	94536	1	Flange Bearing, 1.125 ID
18		2	3/8-16 x 1-1/2 Carriage Bolt SS	22	99479	2	Sprocket Kit
19		1	Drive Shaft Assembly	23	330	1	1" Retaining Ring
Item 5 99087 Gear Box Kit							
24	99067	1	Gear Box 10 x 10 x 2X Worm Gear	26		4	M8 Lock Washer SS
25		4	M8 x 1.25 x 16 Hex Cap Screw SS				
Item 6 99085 Conveyor Motor Kit							
16		4	3/8 Lock Washer SS	28		1	Motor 1/2 hp NEMA 56C
27		4	3/8-16 x 3/4 Hex Cap Screw SS				
Item 7 99077 Electrical Box Assembly							
10		6	1/2 Flat Washer SS	30	99570	1	Electrical Box Latch Kit (pkg of 2)
14		2	3/8-16 x 1 Hex Cap Screw SS	31	99195	8	Break-Through Plug
15		2	3/8 Flat Washer SS	32	99254	3	Switch, Push Button
16		2	3/8 Lock Washer SS	33		1	0.25 Grommet
29	99696	1	Electrical Box	34	99080	1	CHMSL Kit
SS = Stainless Steel				G = Grade			

CHUTE ASSEMBLY



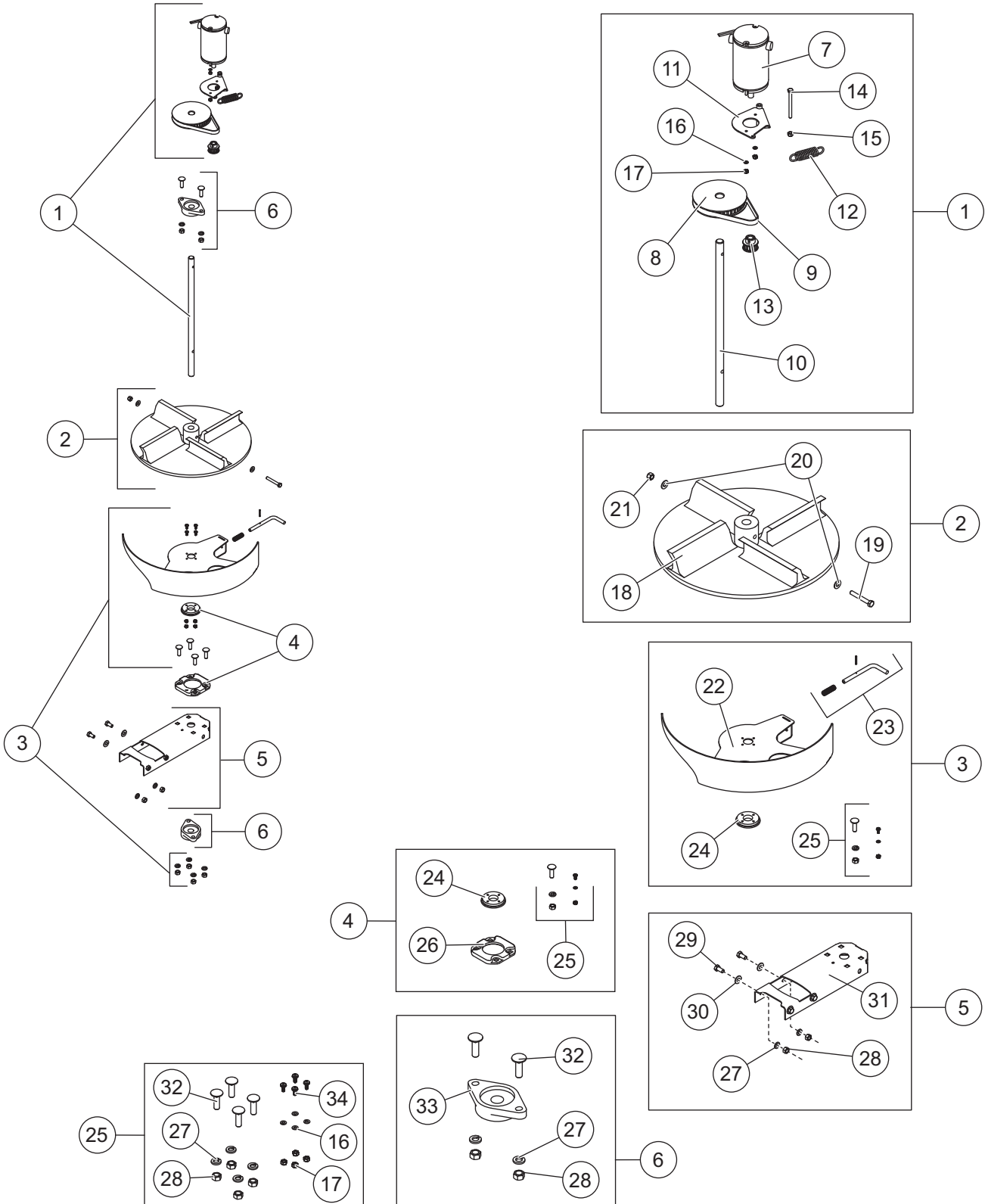
www.storksplows.com
Striker™ HOPPER SPREADER

Chute Assembly							
Item	Part	Qty	Description	Item	Part	Qty	Description
1	99132	1	Short Chute Assembly – Complete*	5	99613	1	Chute Attachment Kit
2	99096	1	Long Chute Assembly – Complete*	6	99568	1	Magnetic Chute Interlock Kit
3	96386	1	Chute Upper Section	7	99139	1	Chute Middle Section Kit†
4	99098	2	Handle Kit	8	99137	1	Chute Lower Section Kit
Item 4				99098 Handle Kit			
9		2	1/4-20 x 1-1/4 Hex Cap Screw SS	11		2	1/4-20 Locknut GB SS
10		4	1/4 Flat Washer SS				
Item 5				99613 Chute Attachment Kit			
12		2	3/8 x 8-1/4 Chute Pin	13		2	3/32 x 2-1/4 Cotter Pin
Item 7				99139 Chute Middle Section Kit†			
–		1	Chute Extension, Electric	16		4	3/8 Lock Washer SS
10		2	1/4 Flat Washer SS	17		4	3/8-16 Hex Nut SS
11		2	1/4-20 Locknut GB SS	18		2	1/4-20 x 3/4 Hex Cap Screw
14		4	3/8-16 x 3/4 Hex Cap Screw SS	19	99207	1	Chute Motor Cover
15		4	3/8 Flat Washer SS				
Item 8				99137 Chute Lower Section Kit			
–		1	Lower Chute Body	13		4	3/8 Flat Washer SS
4		2	1/4 Flat Washer SS	14		4	3/8 Lock Washer SS
5		2	1/4-20 Locknut GB SS	15		4	3/8-16 Hex Nut SS
12		4	3/8-16 x 3/4 Hex Cap Screw SS	16		2	1/4-20 x 3/4 Hex Cap Screw SS
SS = Stainless Steel				ns = not shown			

* Includes spinner and shutter assemblies shown on following page.

† Not used in the 99132 short chute assembly.

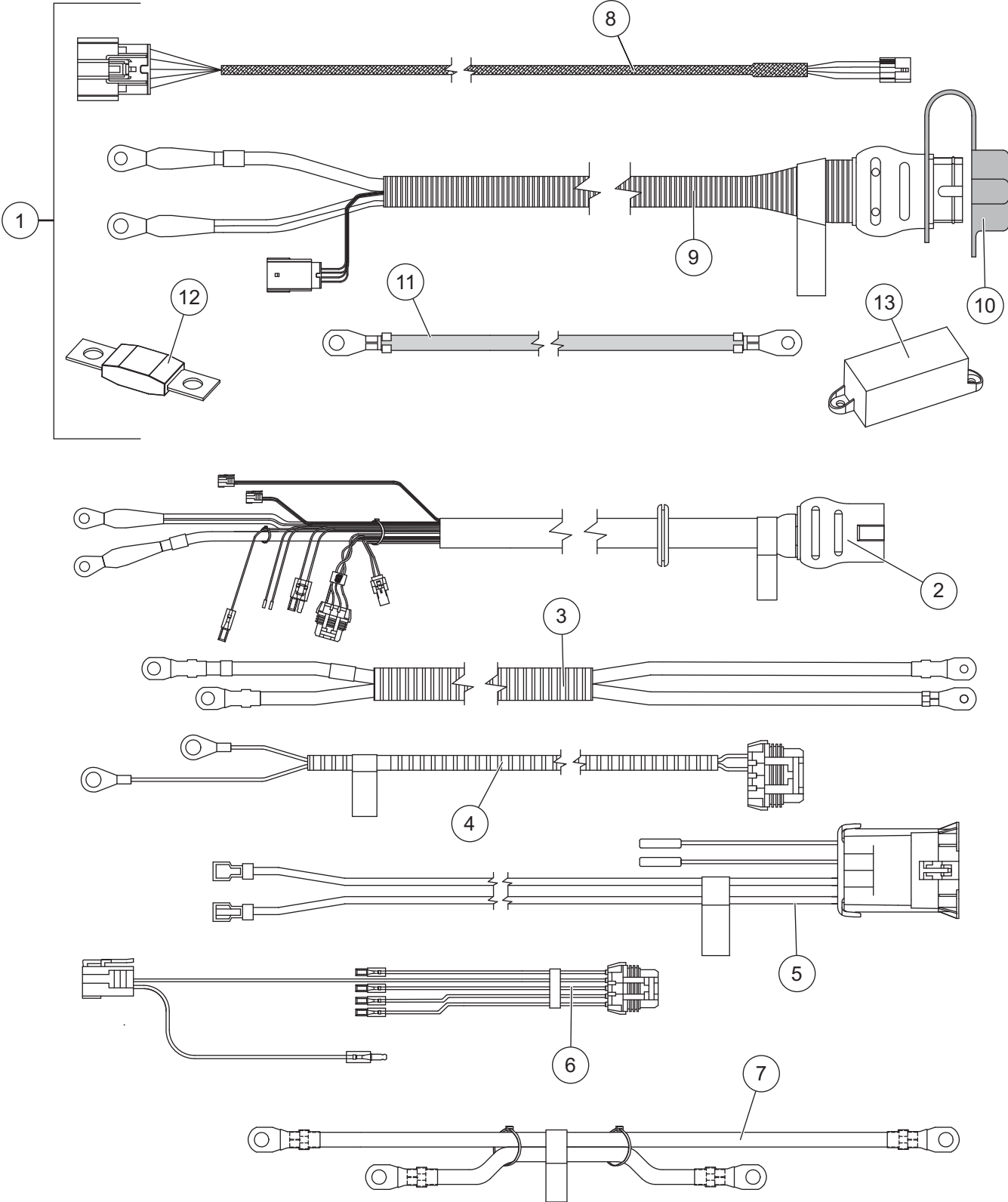
SPINNER DRIVE & SHUTTER ASSEMBLIES



www.storksplows.com
Striker™ HOPPER SPREADER

Spinner Drive & Shutter Assemblies							
Item	Part	Qty	Description	Item	Part	Qty	Description
1	96506	1	Chute Drive Service Kit	4	96504	1	Chute Shutter Bearing Kit
2	99485	1	Poly Spinner Kit	5	96392	1	Shutter Bearing Support Kit
3	99135	1	Shutter Replacement Kit	6	96501	2	Bearing kit
Item 1				96506 Chute Drive Service Kit			
7	93100	1	Motor 12V 1/3 hp	13	93101	1	10-Tooth Pulley, Drive Gear
8	78066	1	40-Tooth Cogged Belt Pulley 3/4 Bore	ns	99614	1	Bolt Bag, Chute Service Kit
9	M1355	1	Spinner Drive Belt	14		1	1/4-20 x 3 Hex Cap Screw SS
10	99228	1	Spinner Shaft	15		1	1/4-20 Locknut GB SS
11		1	Spinner Motor Tensioner Plate	16		2	#10 Flat Washer SS
12	99776	1	Spinner Motor Spring SS	17		2	#10-32 Locknut GB SS
Item 2				99485 Poly Spinner Kit			
18		1	Spinner, Black Poly – CW Rotation	20		2	5/16 Flat Washer SS
19		1	5/16-18 x 2-1/4 Hex Cap Screw SS	21		1	5/16-18 Locknut GB SS
Item 3				99135 Shutter Replacement Kit			
22		1	Chute Shutter	24		1	Chute Shutter Bearing – Inner
23	96505	1	Shutter Lock Pin Kit	25	99615	1	Bolt Bag – Shutter
Item 4				96504 Chute Shutter Bearing Kit			
24		1	Chute Shutter Bearing – Inner	26		1	Chute Shutter Bearing – Outer
25	99615	1	Bolt Bag – Shutter				
Item 5				96392 Shutter Bearing Support Kit			
ns	96529	1	Bolt Bag, Shutter Bearing Support Kit	29		4	3/8-16 x 3/4 Hex Cap Screw SS
27		4	3/8 Lock Washer SS	30		4	3/8 Flat Washer SS
28		4	3/8-16 Hex Nut SS	31		1	Chute Lower Bearing Support
Item 6				96501 Bearing Kit			
27		4	3/8 Lock Washer SS	32		4	3/8-16 x 1-1/4 Carriage Bolt
28		4	3/8-16 Hex Nut SS	33	96167	1	Pillow Block Bearing 3/4 Bore
Item 25				99615 Bolt Bag – Shutter			
16		4	#10 Flat Washer SS	28		4	3/8-16 Hex Nut SS
17		4	#10-32 Locknut GB	32		4	3/8-16 x 1-1/4 Carriage Bolt
27		4	3/8 Lock Washer SS	34		4	10-32 1/2 #2 Pan-Head Screw SS
			SS = Stainless Steel				ns = not shown
							G = Grade

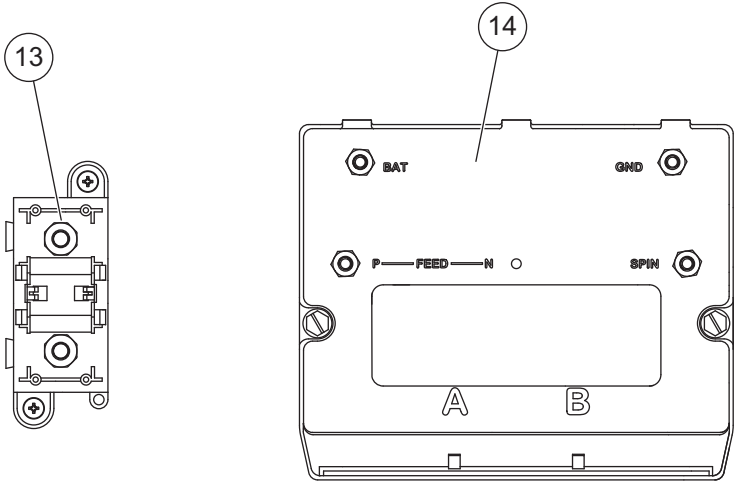
ELECTRICAL COMPONENTS



www.storksplows.com
Striker™ HOPPER SPREADER

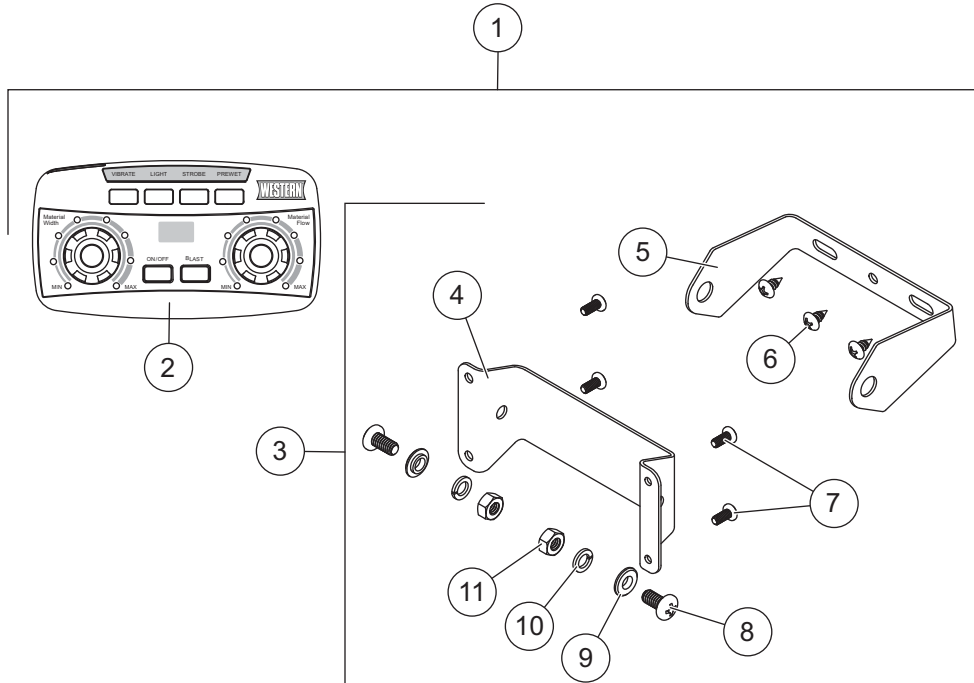
Cables & Harnessing, Electrical Components							
Item	Part	Qty	Description	Item	Part	Qty	Description
1	78402	1	Vehicle Side Harness Kit	6	69939	1	10-Pin Connector w/Switch Connector
2	69906	1	Hopper Harness Assembly	7	78385	1	Cable – Module to Isolated Stud Block
3	78103	1	Conveyor Motor Cable	ns	99772	1	Motor Terminal Cover Kit (pkg of 2)
4	78361	1	Cable Assembly – Spinner Motor				
5	78105	1	Cable Assembly – Chute Spinner Motor				
Item 1 78402 Vehicle Side Harness Kit							
8	69902	1	Vehicle Control Harness	12	95836	1	Fuse, 100 Amp
9	76057	1	Vehicle Harness Assembly (incl. item 10)	13	95837	1	Fuse Holder/Isolated Stud block
10	99759	1	Plug Cover	ns		6	Cable Tie, HD 25.25"
11	22511	1	22" Battery Cable – Red	ns		10	Cable Tie, 15.35"
Electrical Box Components							
13	95837	1	Fuse Holder/Isolated Stud Block	14	52385	1	Spreader Module 4-Post

ns = not shown



www.storksplows.com
Striker™ HOPPER SPREADER

CAB CONTROL



Cab Control							
Item	Part	Qty	Description	Item	Part	Qty	Description
1	99534	1	Cab Control Kit	3	52345	1	Cab Control Bracket Kit
2	99774	1	Cab Control 2-Knob				
Item 1				99534 Cab Control Kit			
2	99774	1	Cab Control 2-Knob	3	52345	1	Cab Control Bracket Kit
Item 3				52345 Cab Control Bracket Kit			
4		1	Control Bracket, Inner	8		2	1/4-20 x 1/2 Pan Head Machine Screw SS – Black
5		1	Control Bracket, Outer	9		2	1/4 Shoulder Washer SS – Black
6		3	#10 x 3/8 Pan Head Tapping Screw SS	10		2	1/4 Lock Washer SS
7		4	#8 x 3/8 Pan Head Machine Screw	11		2	1/4-20 Hex Nut G5 – Black
SS = Stainless Steel				G = Grade			

www.storksplows.com
Striker™ HOPPER SPREADER

ACCESSORIES

Accessory Kits			
Part	Description	Part	Description
99139	Chute Middle Section/Extension Kit	78402*	Vehicle-Side Harness Kit
99686	License Plate Light Kit	99488	Hopper Side Extension Kit
99505-1	Primary Work Light Kit	92532	Truck Mount Kit, 2 Bars – 7' & 8' Hoppers
99732-1	Secondary Work Light Kit	92533	Truck Mount Kit, 3 Bars – 9' Hopper
99494	Strobe Light Kit	99690	Tie-Down Kit SH, Chain
76668	Vibrator Kit		

* Contains all vehicle-side electrical components except control.

Pre-Wet Kits			
Part	Description	Part	Description
76400	Standard Pump Kit, On-Off System	76425	50-Gallon Tank Kit (2 x 25 gal)
76420	Deluxe Pump Kit, Full-Feature System	76450	100-Gallon Tank Kit (2 x 50 gal)
76405	Pre-Wet Pump Switch Kit		



Western Products
PO Box 245038
Milwaukee, WI 53224-9538
www.westernplows.com

 A DIVISION OF DOUGLAS DYNAMICS, LLC

Copyright © 2017 Douglas Dynamics, LLC. All rights reserved. This material may not be reproduced or copied, in whole or in part, in any printed, mechanical, electronic, film or other distribution and storage media, without the written consent of Western Products. Authorization to photocopy items for internal or personal use by Western Products outlets or spreader owner is granted.

Western Products reserves the right under its product improvement policy to change construction or design details and furnish equipment when so altered without reference to illustrations or specifications used. Western Products or the vehicle manufacturer may require or recommend optional equipment for spreaders. Do not exceed vehicle ratings with a spreader. Western Products offers a limited warranty for all spreaders and accessories. See separately printed page for this important information. The following are registered (®) or unregistered (™) trademarks of Douglas Dynamics, LLC: Striker™, WESTERN®.

Printed in U.S.A.