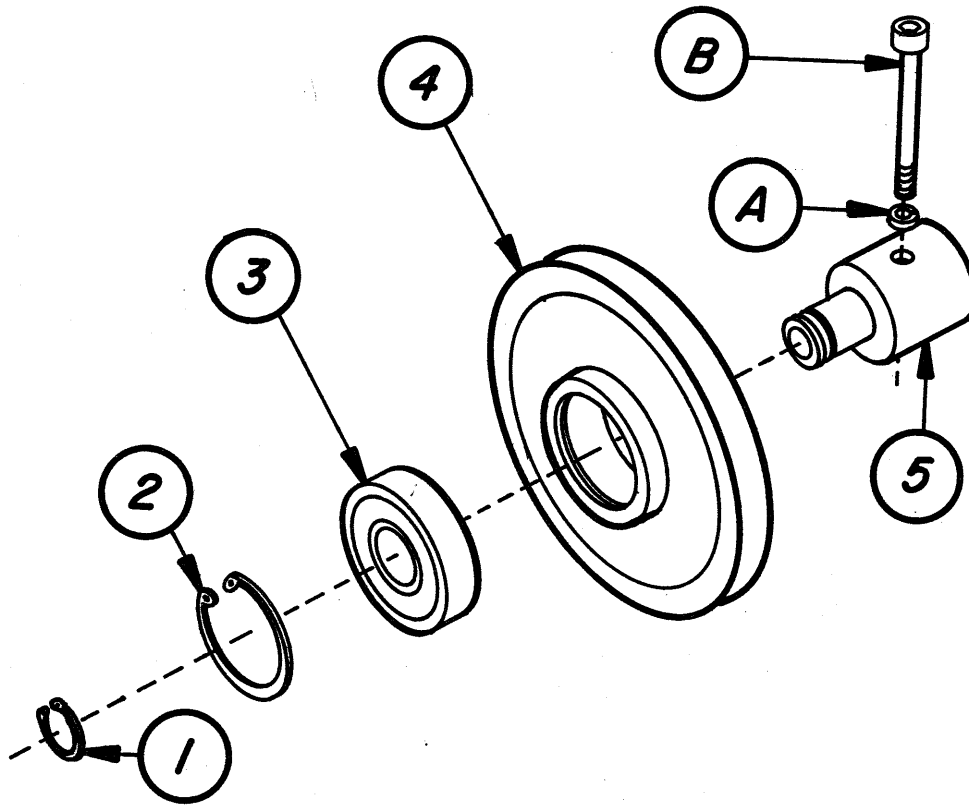


Parts Illustration



Parts List

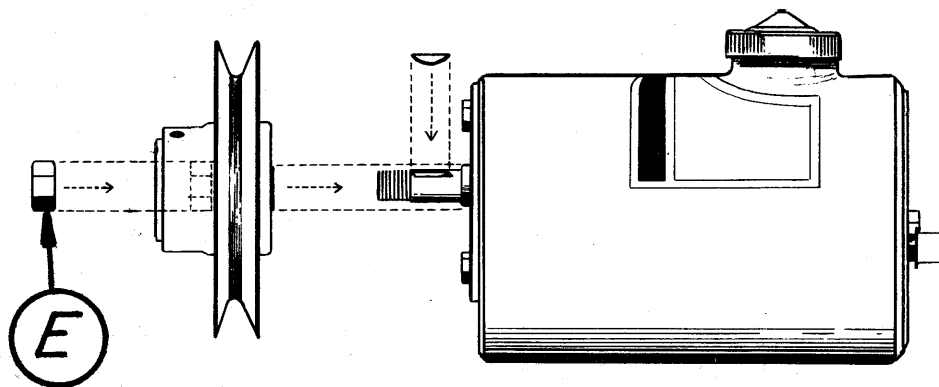
REF#	PART#	QTY	DESCRIPTION
1	7896	1	RETAINING RING - .042 x .722
2	7895	1	RETAINING RING - .062 x 2.054
3	7893	1	BEARING
4	7894	1	SHEAVE WELDMENT 4-3/4"
4	7953	1	SHEAVE WELDMENT 3-3/4"
4	7957	1	SHEAVE WELDMENT 6"
5	7898	1	INNER HUB
6	7910	1	TOOL KIT
A	*	2	1/4 LOCKWASHER
B	*	2	1/4 x 2 (NC) HEX SOCKET HEAD CS GR.8
C	*	2	3/16 ALLEN WRENCH -LONG ARM, HEX
D	*	1	LEVER HOOK
E	*	1	1/2 (NF) PT HX LOCKNUT NYLOC INSERT ZP

* Serviced as part of 7910

6380

Installing Sheave

Remove locknut & sheave from shaft on pump tank assembly. Be sure key remains in shaft slot. Install PumpMate on shaft making sure shaft groove aligns with key. Turn locknut (E) on shaft by hand with socket wrench & short extension. Be careful not to cross-thread nut. Do not reuse previously removed locknut. Use a screwdriver or 1/4" bolt in through holes in sheave to hold while tightening pump nut to 35 to 40 foot pounds. To engage pump: Place a 1/4" x 2" socket head capscrew (B) with lockwasher (A) through holes in sheave & tighten into threaded hole on opposite side. Torque capscrew to 5 or 6 foot pounds with 3/16" Allen wrench (C).



Control Head Instructions

To disengage pump: Remove capscrew from PumpMate and place Single Lever Control in "Angle Right" position. Install Lever Hook (D) over lever & side of Control Head.

WARNING: USE LEVER HOOK ONLY WHEN CAPSCREW IS REMOVED FROM PumpMate. FAILURE TO REMOVE HOOK WHEN PUMP IS ENGAGED WILL RESULT IN IMMEDIATE PUMP AND/OR HYDRAULIC HOSE FAILURE.

