



Fisher Engineering

P.O. Box 529, Rockland, ME 04841

22275 – 7-1/2' LD
8252 – 8' HD

8251 – 7-1/2' RD
26880 – 8-1/2' HD
8253 – 9' HD

June 1, 2000
Lit. No. 6407

SnoFoil® Assembly for 7-1/2' LD & RD, 8' HD, 8-1/2' HD, or 9' HD Blades

Table Of Contents

SnoFoil Assembly 2
Installation Instructions 4

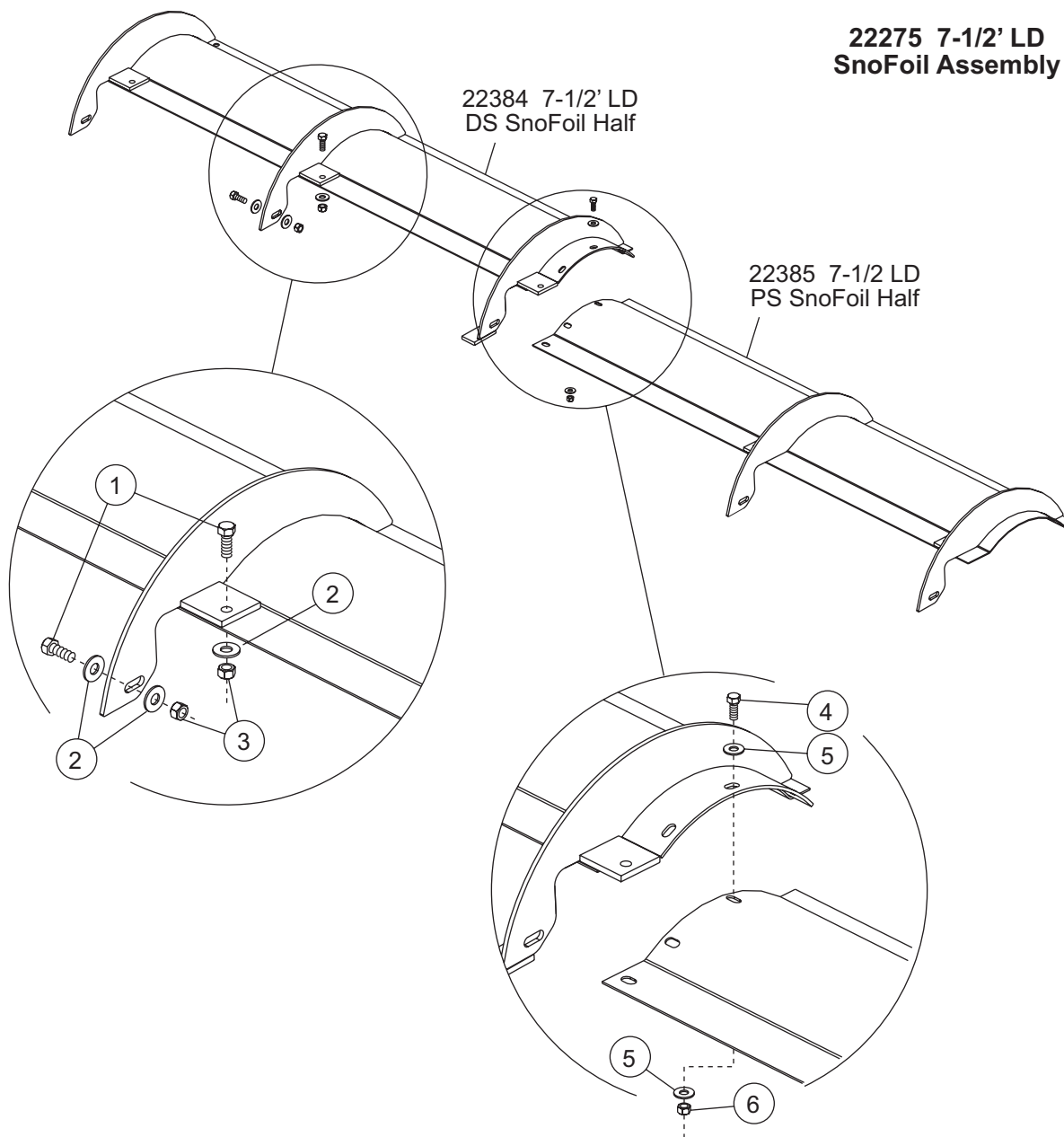
SnoFoil Assembly Parts List						
Description	Qty	Part #				
		7-1/2' LD SnoFoil Assembly 22275	7-1/2' RD SnoFoil Assembly 8251	8' HD SnoFoil Assembly 8252	8-1/2' HD SnoFoil Assembly 26880	9' HD SnoFoil Assembly 8253
Driver-Side (DS) SnoFoil Half	1	22384	8254	8256	26706	8261
Passenger-Side (PS) SnoFoil Half	1	22385	8174	8174	26707	8259
Bolt Bag	1	8263	8263	8263	8263	8263

⚠ WARNING

Do not exceed GVWR or GAWR including blade and ballast. The rating label is found on the driver-side vehicle door cornerpost.

NOTE: See your FISHER® outlet for application recommendations. SnoFoil assembly application weight information may be found in the Kit Selection Guide.

22275 – 7-1/2' LD 8251 – 7-1/2' RD
 8252 – 8' HD 26880 – 8-1/2' HD
 8253 – 9' HD



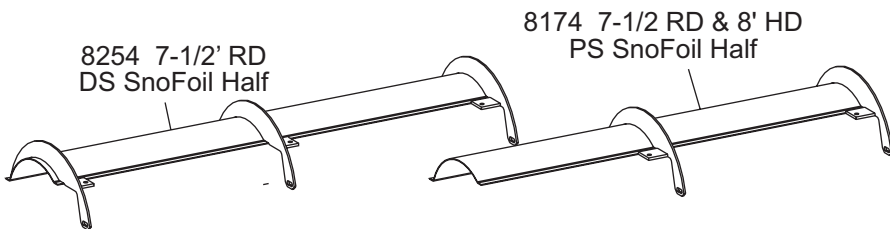
**22275 7-1/2' LD
SnoFoil Assembly**

Bolt Bag – 8263

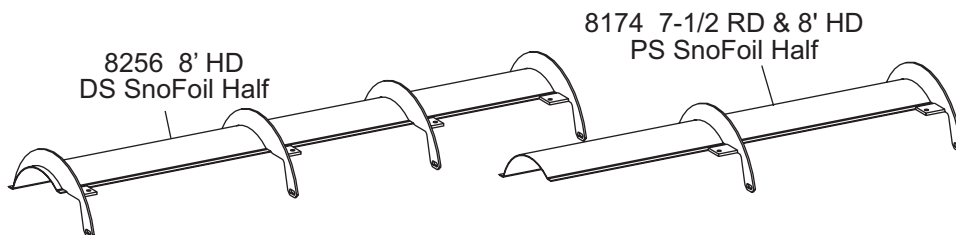
Ref #	Part #	Qty	Description	Ref #	Part #	Qty	Description
1	90103	16	3/8-16 x 1" Cap Screw	4	90676	4	5/16-18 x 5/8" Cap Screw
2	90315	24	3/8" Plain Washer	5	90313	8	5/16" Plain Washer
3	90352	16	3/8-16 Locknut	6	90675	4	5/16" Locknut

22275 – 7-1/2' LD
8252 – 8' HD

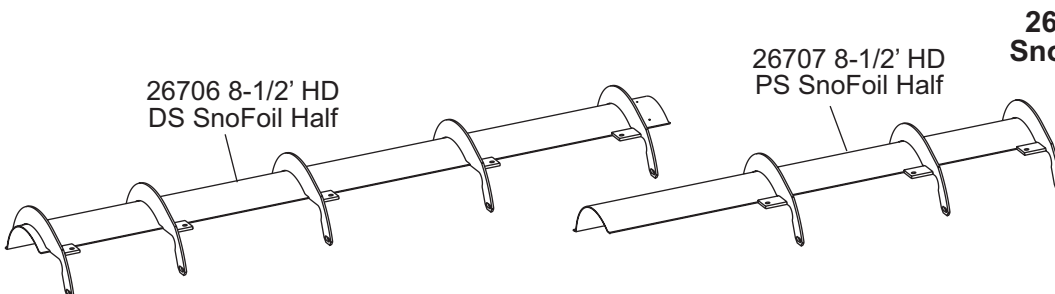
8251 – 7-1/2' RD
26880 – 8-1/2' HD
8253 – 9' HD



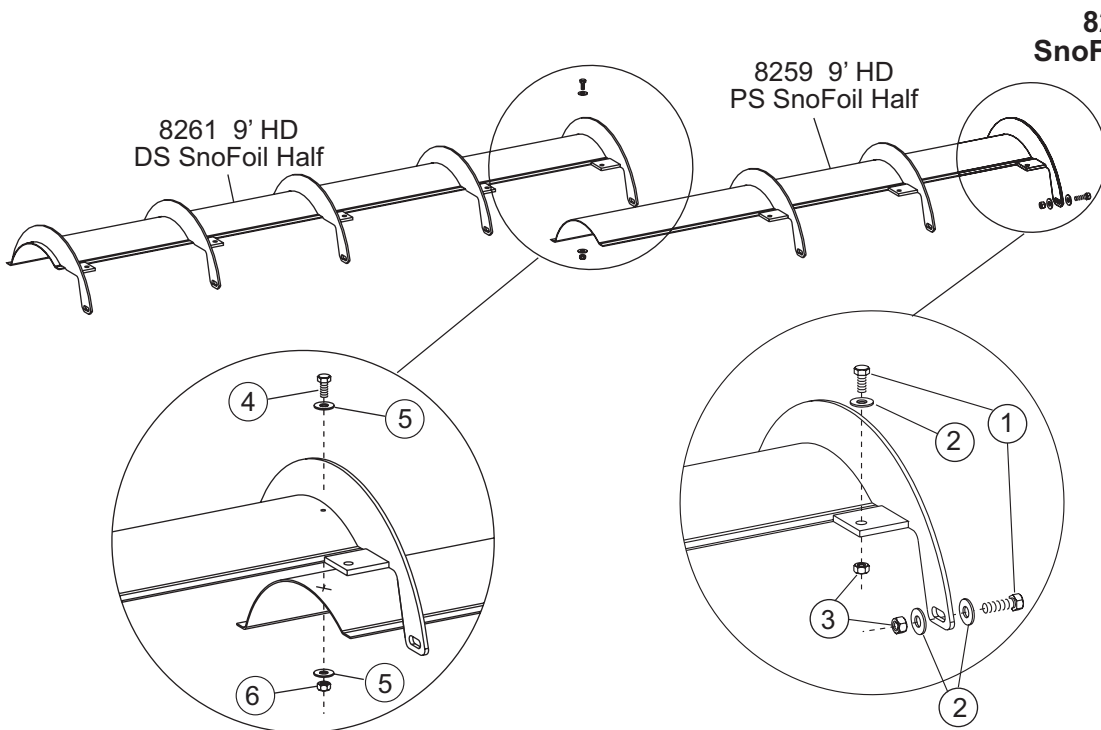
8251 7-1/2' RD SnoFoil Assembly



8252 8' HD SnoFoil Assembly



26880 8-1/2' HD SnoFoil Assembly



8253 9' HD SnoFoil Assembly

22275 – 7-1/2' LD 8251 – 7-1/2' RD
 8252 – 8' HD 26880 – 8-1/2' HD
 8253 – 9' HD

INSTALLATION INSTRUCTIONS

In the following steps, use the torque chart to tighten the fasteners correctly.

1. Remove blade guides from the top of the blade and set them aside for later.
2. Place the passenger-side and driver-side SnoFoil® assembly halves on top of the blade, aligning their edges with the edges of the blade. The driver-side SnoFoil assembly half should be on top.
3. Attach slotted holes in the SnoFoil assembly ribs to holes in the blade ribs with one 3/8" x 1" cap screw, two 3/8" plain washers, and one 3/8" locknut at each rib connection. Plain washers should be placed outside slotted holes on both blade and SnoFoil assembly ribs. Refer to the illustration below.
4. Clamp the SnoFoil assembly halves to the top of the blade. Drill 13/32" holes through the top of the blade using the holes in the SnoFoil assembly as guides.
5. Fasten the SnoFoil assembly to the top of the blade with a 3/8" x 1" cap screw, plain washer, and

3/8" locknut at each tab location. Refer to the illustration below.

For 7-1/2' LD: Locate the washer **under the rolled top edge of the blade.**

For 7-1/2' RD, 8' HD, 8-1/2'HD, 9' HD: Locate the washer **above the SnoFoil assembly.**

6. Clamp the overlapping sections of the SnoFoil assembly halves together.

For 7-1/2' RD, 8' HD, 8-1/2'HD, 9' HD: Drill 11/32" holes through the assembly using the pilot holes in the driver-side SnoFoil assembly as a guide.

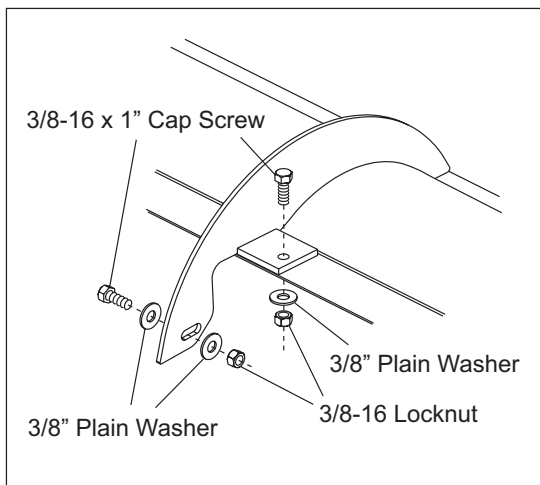
Fasten the SnoFoil assembly halves together using a 5/16" x 5/8" cap screw, two 5/16" plain washers and a 5/16" locknut at each hole.

7. Install flexible blade guides in front edge of SnoFoil assembly.

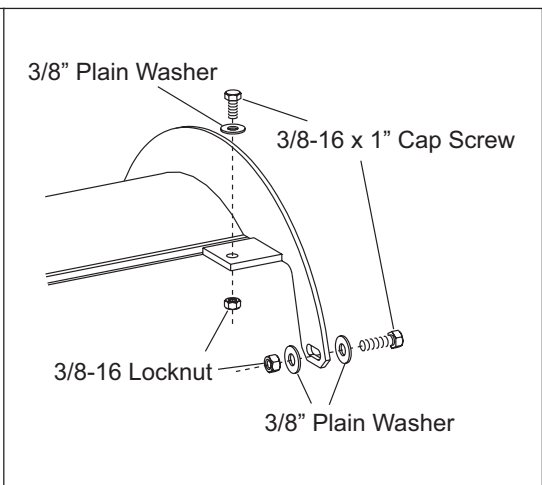
⚠ WARNING

Do not block headlamp beam.

NC FASTENER TORQUE (FT-LB)			
DIAMETER- THREADS PER INCH	GRADE		
	G2	G5	G8
1/4 - 20	6	9	13
5/16 - 18	11	18	28
3/8 - 16	19	31	46
7/16 - 14	30	50	75
1/2 - 13	45	75	115
9/16 - 12	66	110	165
5/8 - 11	93	150	225
3/4 - 10	150	250	370
7/8 - 9	150	378	591
1 - 8	220	583	893



7-1/2' LD



7-1/2' RD, 8' HD, 8-1/2' HD, 9' HD

Copyright © 1998 Douglas Dynamics, L.L.C. All rights reserved. This material may not be reproduced or copied, in whole or in part, in any printed, mechanical, electronic, film or other distribution and storage media, without the written consent of Fisher Engineering. Authorization to photocopy items for internal or personal use by Fisher Engineering outlets is granted.

Fisher Engineering reserves the right under its product improvement policy to change construction or design details and furnish equipment when so altered without reference to illustrations or specifications used herein. Fisher Engineering and the vehicle manufacturer may require and/or recommend optional equipment for snow removal. Fisher Engineering offers a limited warranty for all snowplows and accessories. See separately printed page for this important information. The following are registered (®) and unregistered (™) trademarks of Douglas Dynamics, L.L.C.: FISHER®, SnoFoil®