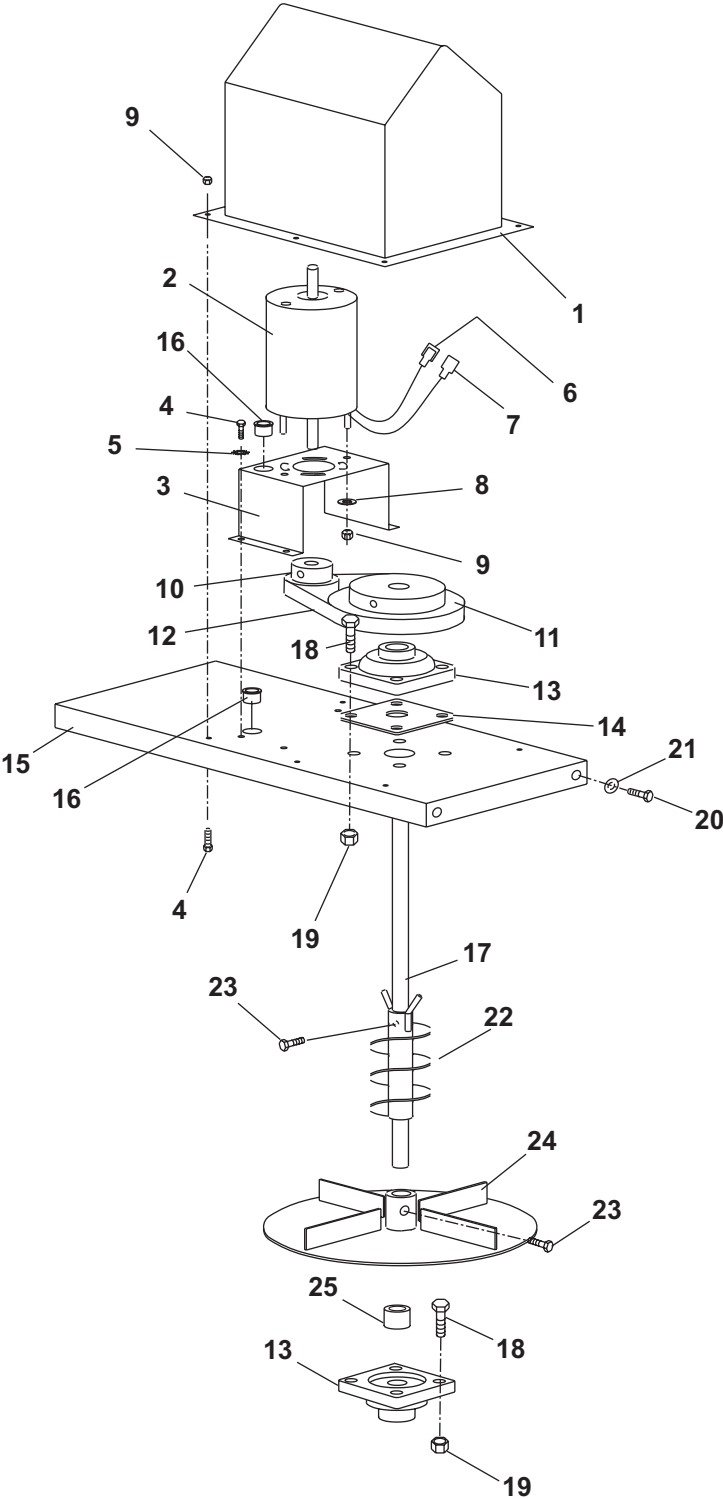




110 Series Drive Components Parts List



NOTE: Part of 21934 kit



110 Series Drive Parts List							
Item	Part	Qty	Description	Item	Part	Qty	Description
1	P2121Y	1	Motor Cap Assembly	14	P2095	1	Neoprene Gasket
2	P3035	1	Motor 12VDC 1/3 HP	15	P2009	1	Motor Base Plate
3	P2010	1	Motor Pedestal	16	M1362	2	Grommet
4	M2150*	10	#10-32 x 5/8 Machine Screw	17	P3046	1	Drive Shaft
5	M2058*	4	#10 Lock Washer	18	M2071*	8	3/8-16 x 1 Cap Screw
6	M1458*	1	1/4" Blade Terminal	19	M2005*	8	3/8-16 Locknut
7	M1459*	1	1/4" Insulated Receptacle	20	M2048*	4	1/4-20 x 3/4 Cap Screw
8	68682*	2	M5 x 10 Plain Washer	21	M2059*	4	1/4 Plain Washer
9	M2007*	8	#10-32 Locknut	22	P2028	1	Auger
10	P2100	1	Pulley – Drivegear 12T	23	M2008*	2	5/16-18 x 1/2 Cap Screw
11	P2101	1	Gearbelt Pulley 40T	24	P2024	1	Spinner – 110
12	M1355	1	Gearbelt	25	68592	1	Spinner Spacer
13	M1351	2	5/8 Four Bolt Flange Bearing				
* available as a service parts kit only (5 pieces per package)							

Copyright© 1998 Douglas Dynamics, L.L.C. All rights reserved. This material may not be reproduced or copied, in whole or in part, in any printed, mechanical, electronic, film or other distribution and storage media, without the written consent of Fisher Engineering. Authorization to photocopy items for internal or personal use by Fisher Engineering outlets is granted.

Fisher Engineering reserves the right under its product improvement policy to change construction or design details and furnish equipment when so altered without reference to illustrations or specifications used herein. Fisher Engineering and the vehicle manufacture may require and/or recommend optional equipment for snow and ice control. Fisher Engineering offers a limited warranty for all spreaders and accessories. See separately printed page for this important information. The following are registered trademarks of Douglas Dynamics, L.L.C.: FISHER®.

Printed in USA