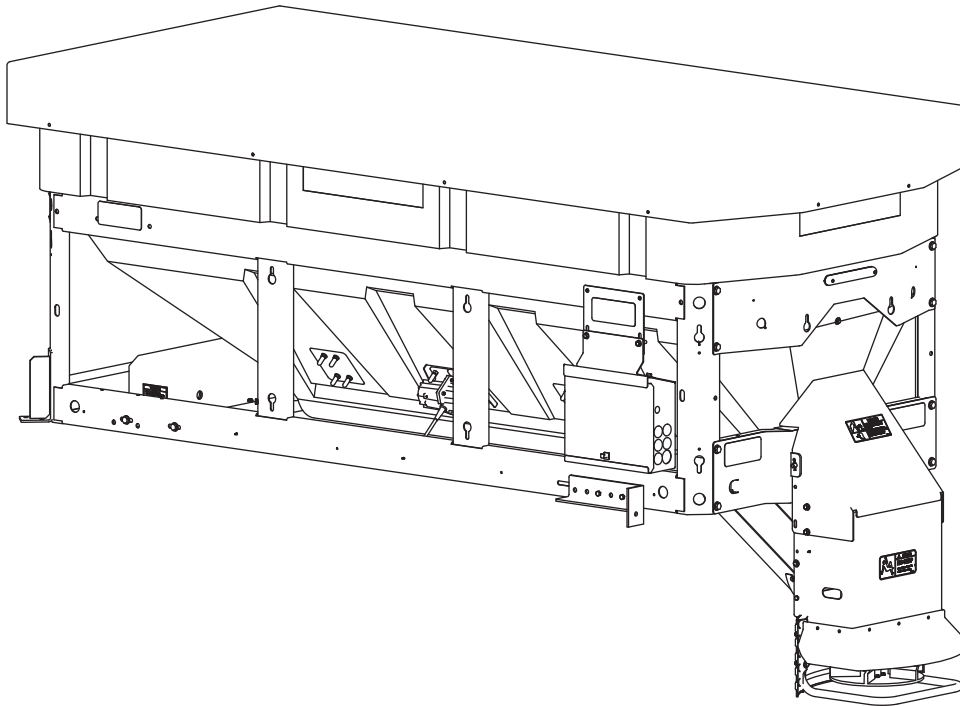




# V-Maxx™ G2 Hopper Spreader

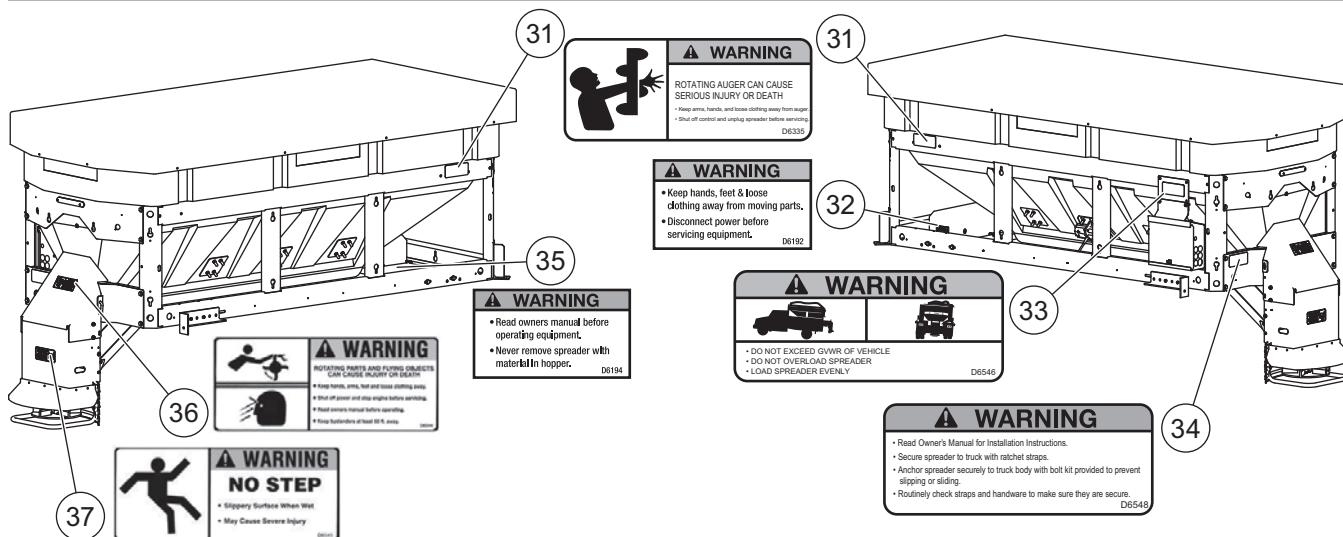
VX-4200

Parts List





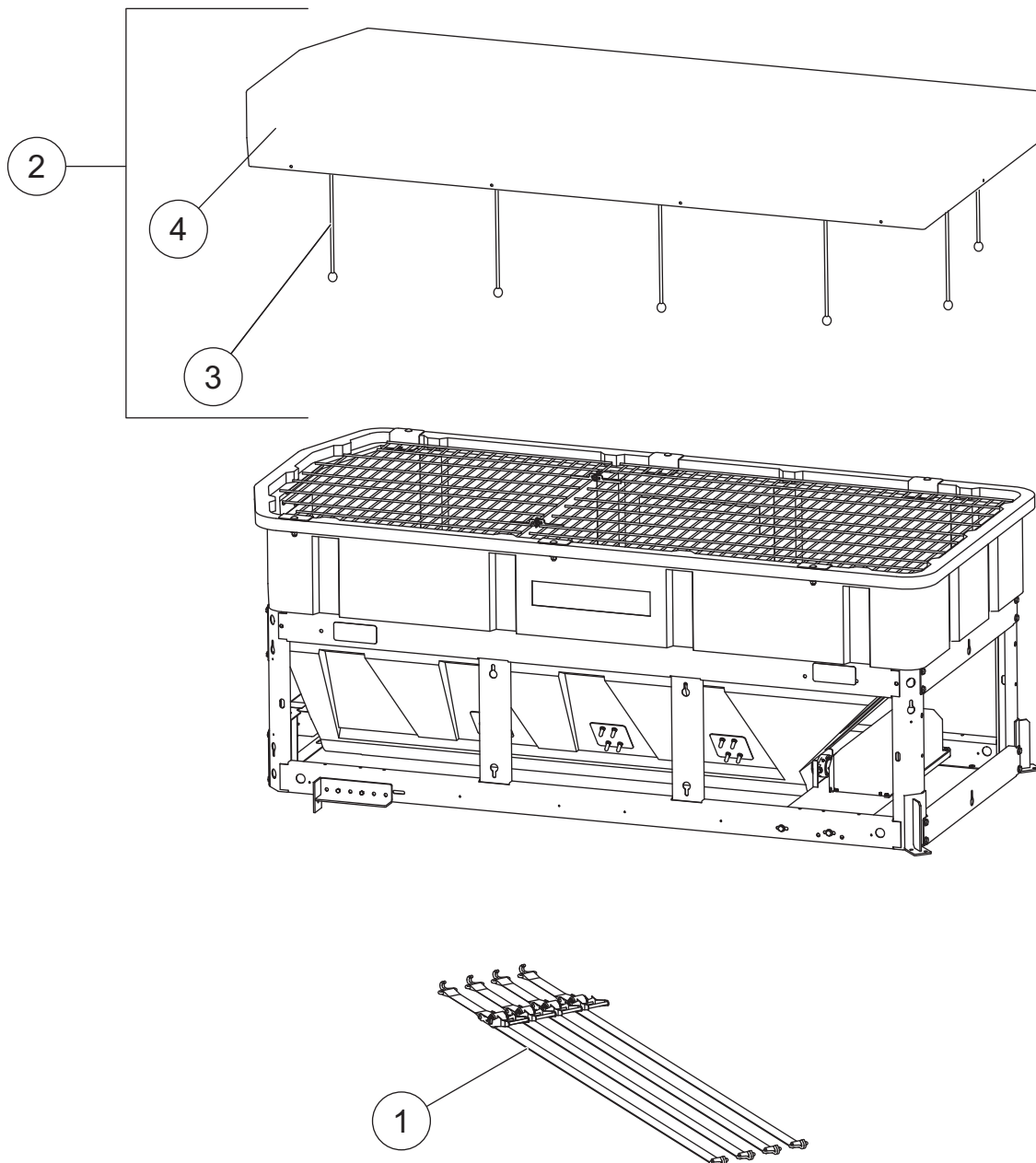
# VX-4200 V-Maxx™ G2 HOPPER SPREADER



Item	Part	Qty	Description	Item	Part	Qty	Description
1	D6886	1	Hopper	20	D4120	6	1/2 Locknut
2	D6890	1	Top Screen Front Section	21	T30820	24	3/8 x 1 Stud Cover
3	D6892	1	Top Screen Rear Section	22	D6898	1	Cross Bar
4	D6866	2	5/16 x 1-1/4 Clevis Pin	23	D6166	1	5/16-18 x 1 Hex Cap Screw
5	D6853	2	Hairpin Cotter	24	96606	1	Top Screen Service Kit
6	F51284	6	1/2-13 x 3 Carriage Bolt	25	96607	1	Top Screen Mounting Hardware
7	D6138	2	5/16-18 Locknut	26	96608	1	Inverted V Service Kit
8	D6889	1	Inverted V Salt Baffle	27	96605	1	Inverted V Mounting Hardware
9	D6815	3	Bolt Plate, 4-Bolt	28	F50547	4	3/8-16 x 2 Hex Cap Screw SS
10	D6888	1	Inverted V Assembly	29	D6169	4	3/8 Flat Washer SS
11	D4121	4	3/8-16 x 1 Hex Cap Screw	30	T30728	4	3/8-16 Locknut SS
12	D6869	1	Salt Discharge Baffle	31	D6335	2	Label - Warning, Rotating Auger
13	D5508	5	Inverted V Backing Plate	32	D6192	1	Label - Warning, Hands and Feet
14	D4125	4	3/8 Flat Washer	33	D6546	1	Label - Warning, Do Not Overload
15	D6584	24	3/8-16 Serrated Flange Locknut	34	D6548	1	Label - Warning, Owner's Manual
16	51068	1	Heavy Duty Vibrator, DC-200	35	D6194	1	Label - Warning, Before Operating
17	D6860	1	Vibrator Backing Plate	36	D6544	1	Label - Warning, Rotating Parts
18	D6165	6	5/16 Flat Washer SS	37	D6545	1	Label - Warning, No Step
19	D4119	6	1/2 Flat Washer	ns	83691	2	Label - SnowEx® V-Maxx G2
<b>Item 24 96606 Top Screen Service Kit</b>							
2	D6890	1	Top Screen Front Section	25	96609	1	Top Screen Mounting Hardware
3	D6892	1	Top Screen Rear Section				
<b>Item 25 96607 Top Screen Mounting Hardware</b>							
4	D6866	2	5/16 x 1-1/4 Clevis Pin	18	D6165	4	5/16 Flat Washer SS
5	D6853	2	Hairpin Cotter	19	D4119	6	1/2 Flat Washer
6	F51284	6	1/2-13 x 3 Carriage Bolt	20	D4120	6	1/2 Locknut
<b>Item 26 96608 Inverted V Service Kit</b>							
8	D6889	1	Inverted V Salt Baffle	27	96605	1	Inverted V Mounting Hardware
10	D6888	1	Inverted V Assembly				
<b>Item 27 96605 Inverted V Mounting Hardware</b>							
7	D6138	1	5/16-18 Locknut	18	D6165	1	5/16 Flat Washer SS
9	D6815	3	Bolt Plate, 4-Bolt	21	T30820	24	3/8 x 1 Stud Cover
13	D5508	5	Inverted V Backing Plate	28	F50547	4	3/8-16 x 2 Hex Cap Screw SS
15	D6584	20	3/8-16 Serrated Flange Locknut	29	D6169	4	3/8 Flat Washer SS
17	D6860	1	Vibrator Backing Plate	30	T30728	4	3/8-16 Locknut SS
ns = not shown				SS = Stainless Steel			

VX-4200 V-Maxx™ G2 HOPPER SPREADER

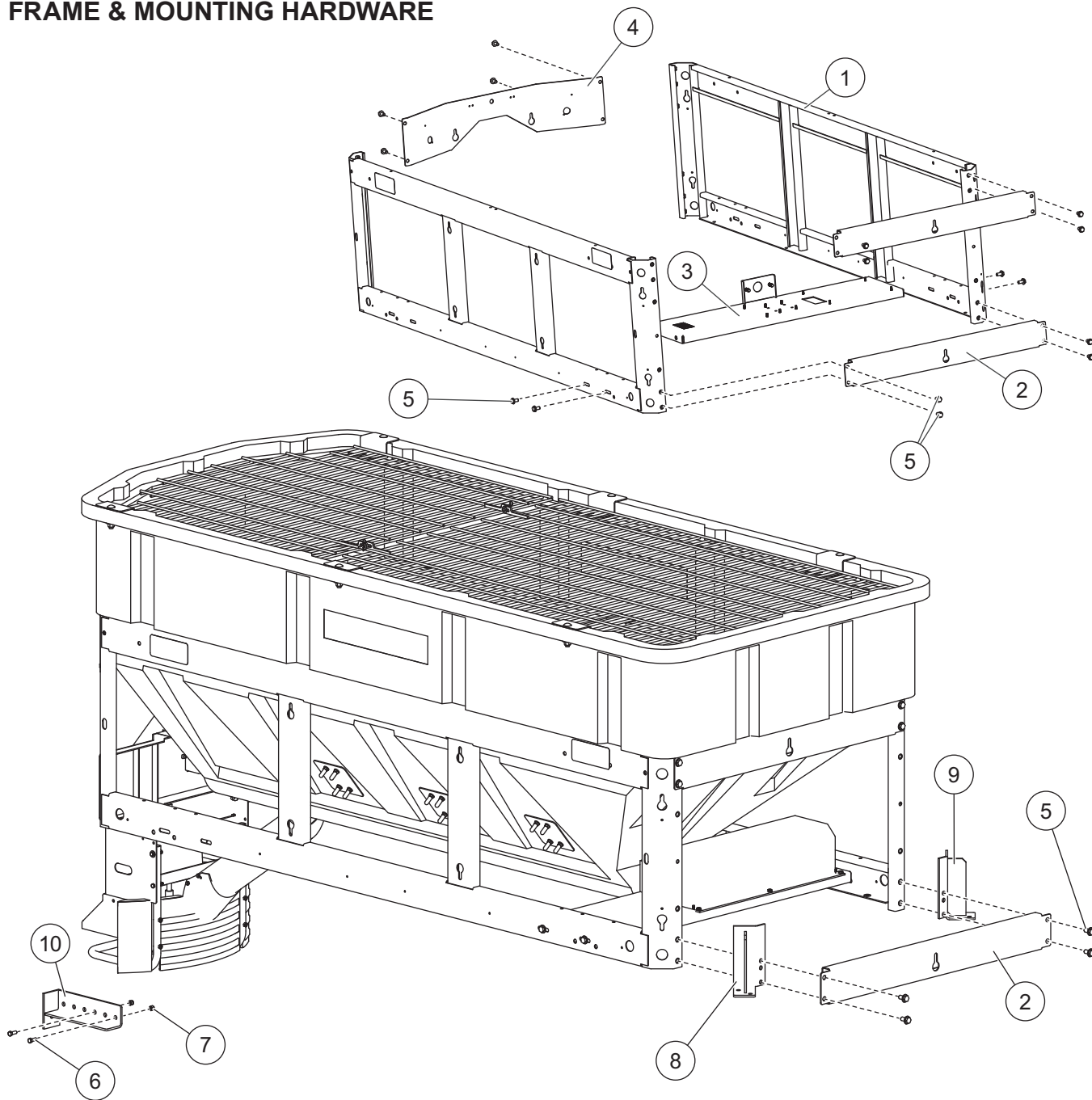
RATCHET STRAPS & COVER



Straps and Cover							
Item	Part	Qty	Description	Item	Part	Qty	Description
1	D6856	1	Ratchet Strap, pkg of 4	2	D6883	1	Tarp and Bungee Strap Kit
<b>Item 2</b>				<b>D6883 Tarp and Bungee Strap Kit</b>			
3	11013	1	Bungee Strap (set of 15)	4		1	Tarp

VX-4200 V-Maxx™ G2 HOPPER SPREADER

FRAME & MOUNTING HARDWARE

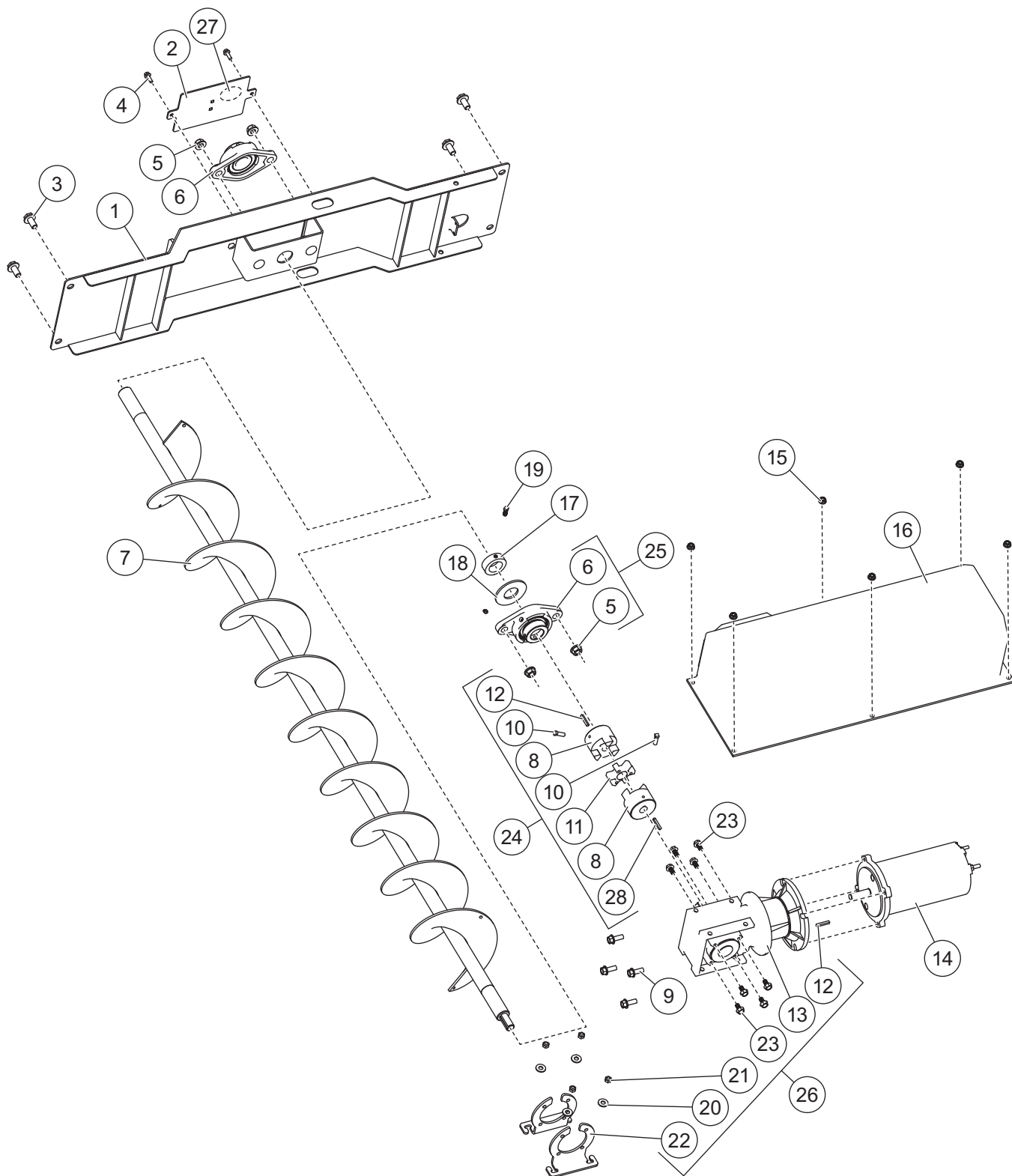


Frame and Mounting Hardware

Item	Part	Qty	Description	Item	Part	Qty	Description
1	D6879-1	2	Side Frame	7	D4124	4	3/8 Locknut
2	D6882	2	Upper/Lower Front Rail	8	D6759	1	Left Front Stop Bracket
3	D6884	1	Auger Motor/Transmission Support	9	D6760	1	Right Front Stop Bracket
4	D6880-1	1	Rear Apron	10	D6756	1	Right Stop Bracket
5	D6528	16	1/2-13 x 1 Serrated Hex Cap Screw	ns	D6755	1	Left Stop Bracket
6	D4121	4	3/8-16 x 1 Hex Cap Screw				

ns = not shown

AUGER DRIVE ASSEMBLY



**VX-4200 V-Maxx™ G2 HOPPER SPREADER**

**AUGER DRIVE ASSEMBLY**

Item	Part	Qty	Description	Item	Part	Qty	Description
1	D6881	1	Spinner Drive Mount Plate	15	D5706	6	5/16-18 Serrated Flange Nut
2	D6814	1	Bearing Cover	16	D6868	1	Auger Motor Cover
3	D6528	4	1/2-13 x 1 Serrated Hex Cap Screw	17	D6792	1	Auger Shaft Hopper Collar
4	D6132	2	1/4-20 x 3/4 Hex Cap Screw	18	D6789	1	Auger Shaft Hopper Washer
5	D5535	4	1/2-13 Serrated Flange Nut	19	D7162	1	5/16-18 x 3/4 Set Screw
6	D5382	2	Auger Bearing	20	D6165	4	5/16 Flat Washer
7	D6897	1	80" Auger	21	D6138	4	5/16-18 Locknut
8	F50513	2	Auger Coupler	22	D6752-1	2	Transmission Support Bracket
9	D6452	4	3/8-16 x 1 Serrated Flange Bolt	23	D5753	8	M8-1.25 x 16 mm Flange Bolt
10	D7163	2	5/16-18 x 1 Coupler Set Screw	24	99793	1	Auger Coupler Kit
11	F50514	1	Urethane Coupler Spider	25	99794	2	Auger Bearing Kit
12	D6873	2	3/16 Key Stock	26	96601	1	Auger Transmission Kit
13	D6894	1	Auger Transmission	27	D6829	1	Label - Attention, Grease Fitting
14	D6872	1	Auger Motor	28	F51936	1	3/16 x 1 Key Stock
<b>Item 24</b>				<b>99793 Auger Coupler Kit</b>			
8	F50513	2	Auger Coupler	12	D6873	1	3/16 Key Stock
10	D7163	2	Coupler Set Screw	28	F51936	1	3/16 x 1 Key Stock
11	F50514	1	Urethane Coupler Spider				
<b>Item 25</b>				<b>99794 Auger Bearing Kit</b>			
5	D5535	2	1/2-13 Serrated Flange Nut	6	D5382	1	Auger Bearing
<b>Item 26</b>				<b>96601 Auger Transmission Kit</b>			
12	D6873	2	3/16 Key Stock	21	D6138	4	5/16-18 Locknut
13	D6894	1	Auger Transmission	22	D6752-1	2	Transmission Support Bracket
20	D6165	4	5/16 Flat Washer	23	D5753	8	M8-1.25 x 16 mm Flange Bolt
M = Metric							





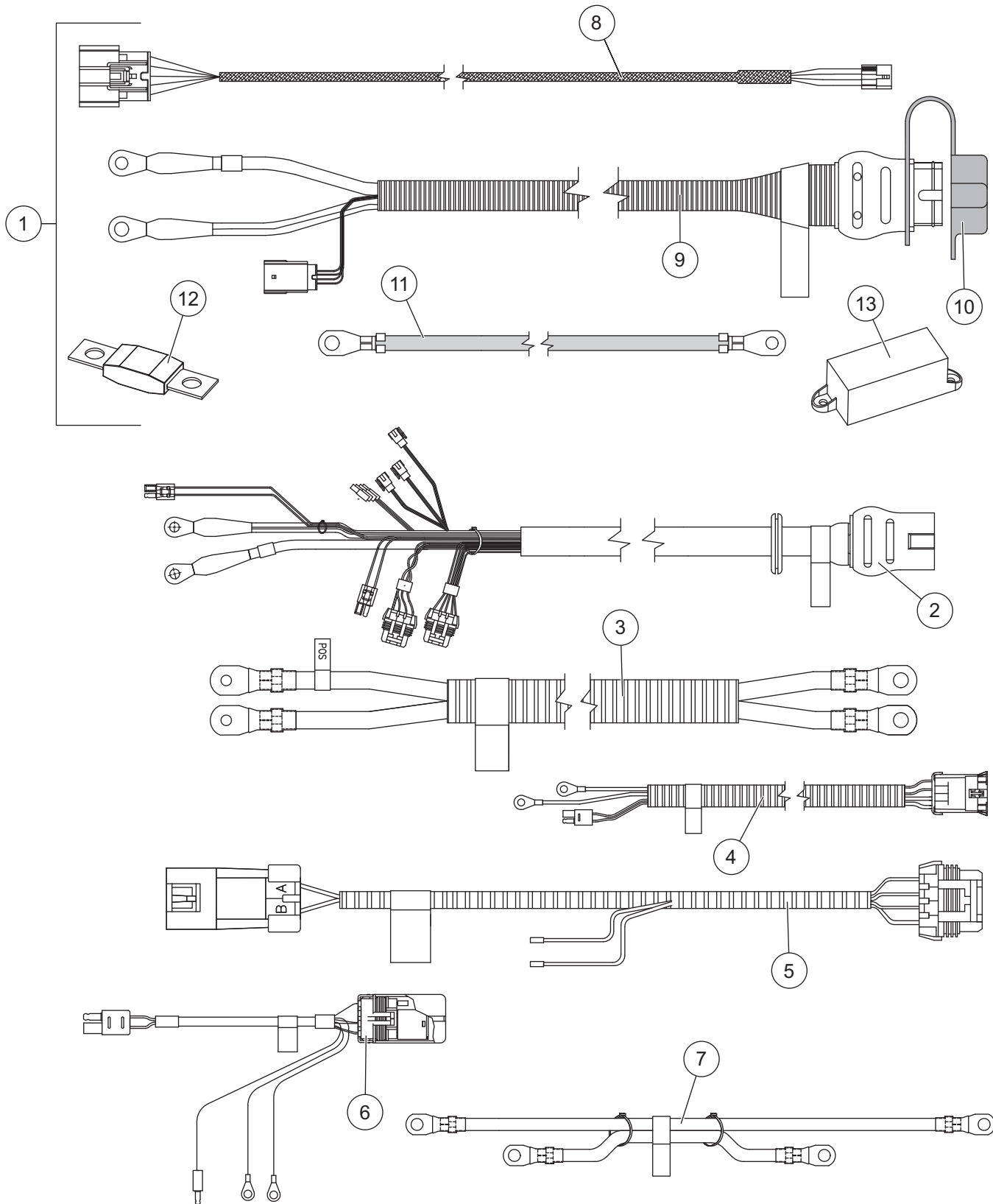
**VX-4200 V-Maxx™ G2 HOPPER SPREADER**

**SPINNER DRIVE ASSEMBLY**

57254 Spinner Drive Assembly							
Item	Part	Qty	Description	Item	Part	Qty	Description
1	D6817	1	Spinner Shroud	12	D6823	1	5-Flite Urethane Spinner
2	D6563	1	1/2 x 20 Bent Pin	13	T15049	1	5/16-18 x 1/2 Hex Cap Screw
3	D4135	1	.093 x 2-3/8 Hairpin Cotter	14	D6824	1	Spinner Hub
4	D6854	3	1/4-20 x 1 Serrated Hex Washer Head Cap Screw SS	15	T15016	7	1/4-20 Waxed Locknut SS
5	D6887	1	Direct Drive Spinner Motor	16	D6820	1	Spinner Guard Tube
6	D6130	7	3/16 Long Rivet	17	D6858	1	Material Deflector
7	D6885	1	Material Chute	18	D6867	1	Chute Extension, 10"
8	D6870	1	Spinner Motor Cover	19	D6859	1	Drive Extension Spinner Shield
9	D6452	8	3/8-16 x 1 Serrated Flange Bolt Type F	20	D6462	8	5/16-18 x 1-3/4 Hex Cap Screw
10	D6138	8	5/16-18 Locknut	21	D6165	6	5/16 Flat Washer
11	D6132	4	1/4-20 x 3/4 Serrated Hex Washer Head Cap Screw SS	22	D6333	4	3/16 x .354 Black Bulbex Rivet
				23	99797	1	Spinner Hub Kit
				ns	83696	1	Spinner Motor Harness
<b>Item 23</b>				<b>99797 Spinner Hub Kit</b>			
4	D6854	3	1/4-20 x 1 Serrated Hex Washer Head Cap Screw SS	13	T15049	1	5/16-18 x 1/2 Hex Cap Screw
12	D6823	1	5-Flite Urethane Spinner	14	D6824	1	Spinner Hub
				15	T15016	3	1/4-20 Waxed Locknut SS
ns = not shown				SS = Stainless Steel			

VX-4200 V-Maxx™ G2 HOPPER SPREADER

CONTROL & ELECTRICAL COMPONENTS



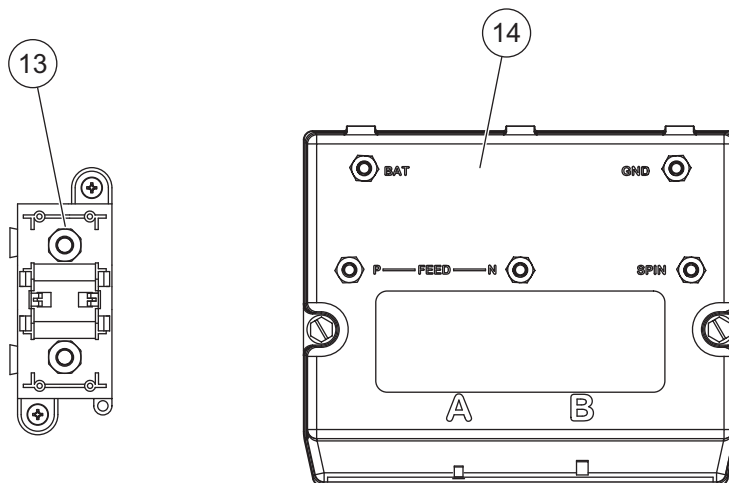
Not drawn to scale.

VX-4200 V-Maxx™ G2 HOPPER SPREADER

CONTROL & ELECTRICAL COMPONENTS

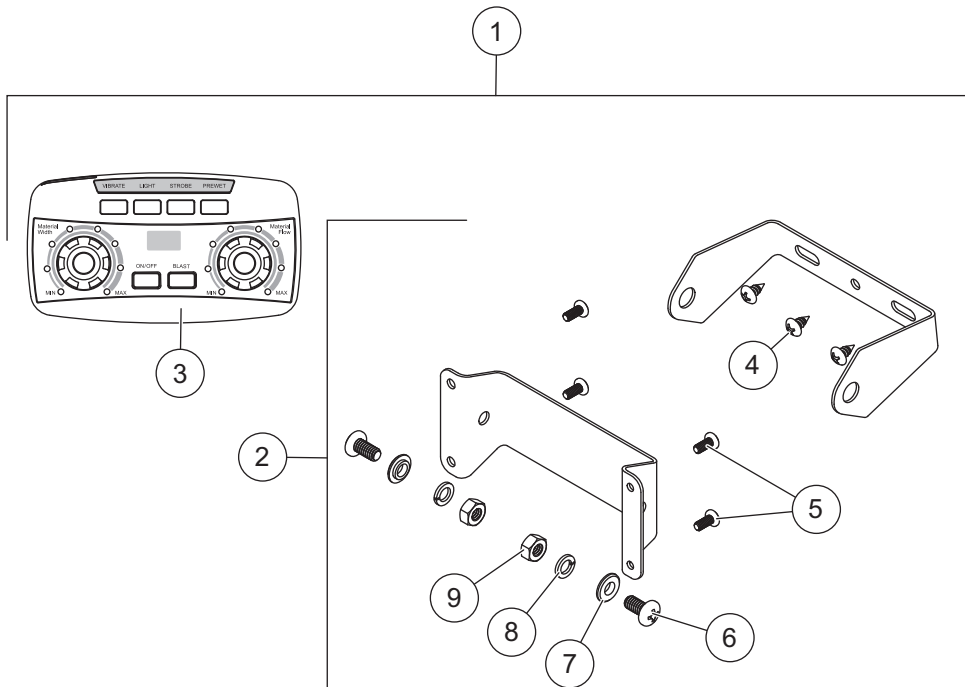
Cables & Harnessing / Electrical Enclosure Assembly							
Item	Part	Qty	Description	Item	Part	Qty	Description
1	78402	1	Vehicle Side Harness Kit	ns	99775	1	Cable Boot – 8-Pin
2	83688	1	Cable Assy, Hopper	ns	57116	1	Bracket, Cable Boot
3	83697	1	Cable Assy, Module to Auger Motor	ns	83712	1	Vibrator Extension Harness, 24"
4	78415	1	Cable Assy, Spinner Motor, Hopper	ns	D6514	1	Center High Mount Stop Light (CHMSL)
5	83696	1	Harness, Spinner Chute	ns	D6529*	2	#10-32 x 1-1/4 Machine Screw SS
6	78382	1	Vibrator Harness Assembly	ns	D6518*	2	#10-32 x 1-1/4 Locknut SS
7	78385	1	Cable Assy, Mod. to Isolated Stud				
<b>Item 1 78402 Vehicle Side Harness Kit</b>							
8	69902	1	Vehicle Control Harness	12	95836	1	Fuse, 100 Amp
9	76057	1	Vehicle Harness Assy (incl. item 10)	13	95837	2	Fuse Holder/Isolated Stud Block
10	99759	1	Plug Cover	ns		6	Cable Tie, HD
11	22511	1	22" Battery Cable – Red	ns		10	Cable Tie, 15.35"
<b>Electrical Box Components</b>							
13	95837	1	Fuse Holder/Isolated Stud Block	14	52375	1	Spreader Module, 5-Post
ns = not shown				SS = Stainless Steel			

\* CHMSL Mounting Hardware



VX-4200 V-Maxx™ G2 HOPPER SPREADER

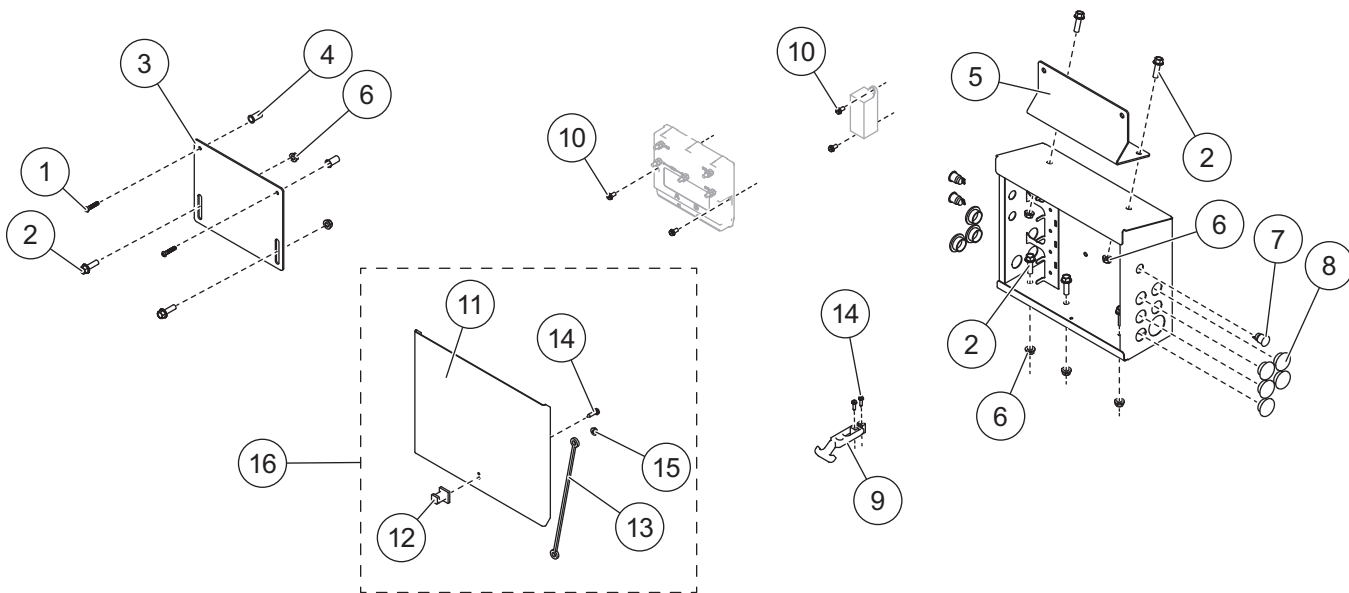
CONTROL & ELECTRICAL COMPONENTS



Cab Control							
Item	Part	Qty	Description	Item	Part	Qty	Description
1	52430	1	Cab Control Kit	3	52432	1	Cab Control 2-Knob
2	52345	1	Cab Control Bracket Kit				
<b>Item 1</b>				<b>52430 Cab Control Kit</b>			
2	52345	1	Cab Control Bracket Kit	3	52432	1	Cab Control 2-Knob
<b>Item 2</b>				<b>52345 Cab Control Bracket Kit</b>			
		1	Bracket, Control Inner	6	2	1/4-20 x 1/2 Pan Head Machine Screw SS – Black	
		1	Bracket, Control Outer				
4		3	#10 x 3/8 Pan Head Tapping Screw SS	7	2	1/4 Shoulder Washer SS – Black	
5		4	#8 x 3/8 Pan Head Machine Screw	8	2	1/4 Lock Washer SS	
				9	2	1/4-20 Hex Nut G5 – Black	
SS = Stainless Steel				G = Grade			

VX-4200 V-Maxx™ G2 HOPPER SPREADER

ELECTRICAL BOX ASSEMBLY



99789 Electrical Box Assembly						
Item	Part	Qty	Description	Item	Part	Description
1	57966	2	1/4-20 x 1-1/4 Hex Cap Screw SS	10	78436	4 1/4-20 x 1/2 Washer Machine Screw SS
2	83641	7	3/8-16 x 1-1/4 Serrated Flange Screw G5	11	57014	1 Cover
3	56999	1	Bracket, Support Top	12	D6198	1 Latch Keeper
4	78263	2	1/4-20 Well Nut	13	43554	1 12" Lanyard Loop
5	57029	1	Bracket, Support Bottom	14	D6553	3 #10 x 3/4 Washer Head Slotted Screw
6	D6584	7	3/8-16 Serrated Flange Nut	15	T15133	1 1/4-20 Serrated Flange Nut
7	99254	3	Switch, Push Button, MO	16	57016	1 Cover Assembly
8	99195	9	Break Through Plug	ns	83698	1 Labels – Electronic Assembly
9	D6105	1	Flexible Draw Latch			
Item 16			57016 Cover Assembly			
11	57014	1	Cover	14	D6553	3 #10 x 3/4 Washer Head Slotted Screw
12	D6198	1	Latch Keeper	15	T15133	1 1/4-20 Serrated Flange Nut
13	43554	1	12" Lanyard Loop			
SS = Stainless Steel			ns = not shown		G = Grade	



TrynEx International, LLC  
531 Ajax Drive  
Madison Heights, MI 48071-2429  
[www.snowexproducts.com](http://www.snowexproducts.com)

 A DIVISION OF DOUGLAS DYNAMICS, LLC

Copyright © 2017 Douglas Dynamics, LLC. All rights reserved. This material may not be reproduced or copied, in whole or in part, in any printed, mechanical, electronic, film, or other distribution and storage media, without the written consent of TrynEx International, LLC. Authorization to photocopy items for internal or personal use by TrynEx International, LLC, outlets or spreader owner is granted.

TrynEx International, LLC, reserves the right under its product improvement policy to change construction or design details and furnish equipment when so altered without reference to illustrations or specifications used. TrynEx International, LLC, or the vehicle manufacturer may require or recommend optional equipment for spreaders. Do not exceed vehicle ratings with a spreader. TrynEx International, LLC, offers a limited warranty for all spreaders and accessories. See separately printed page for this important information. The following are registered (®) or unregistered (™) trademarks of Douglas Dynamics, LLC: SnowEx®, V-Maxx™.

Printed in U.S.A.