



Fisher Engineering

50 Gordon Drive, Rockland, Maine 04841-2139 • www.fisherplows.com

89910, 89920

February 15, 2021
Lit. No. 74147, Rev. 04

STEEL-CASTER™

Hopper and Drive Components

STEEL-CASTER™ Hopper Spreaders

0.35 yd³ & 0.7 yd³

Parts List

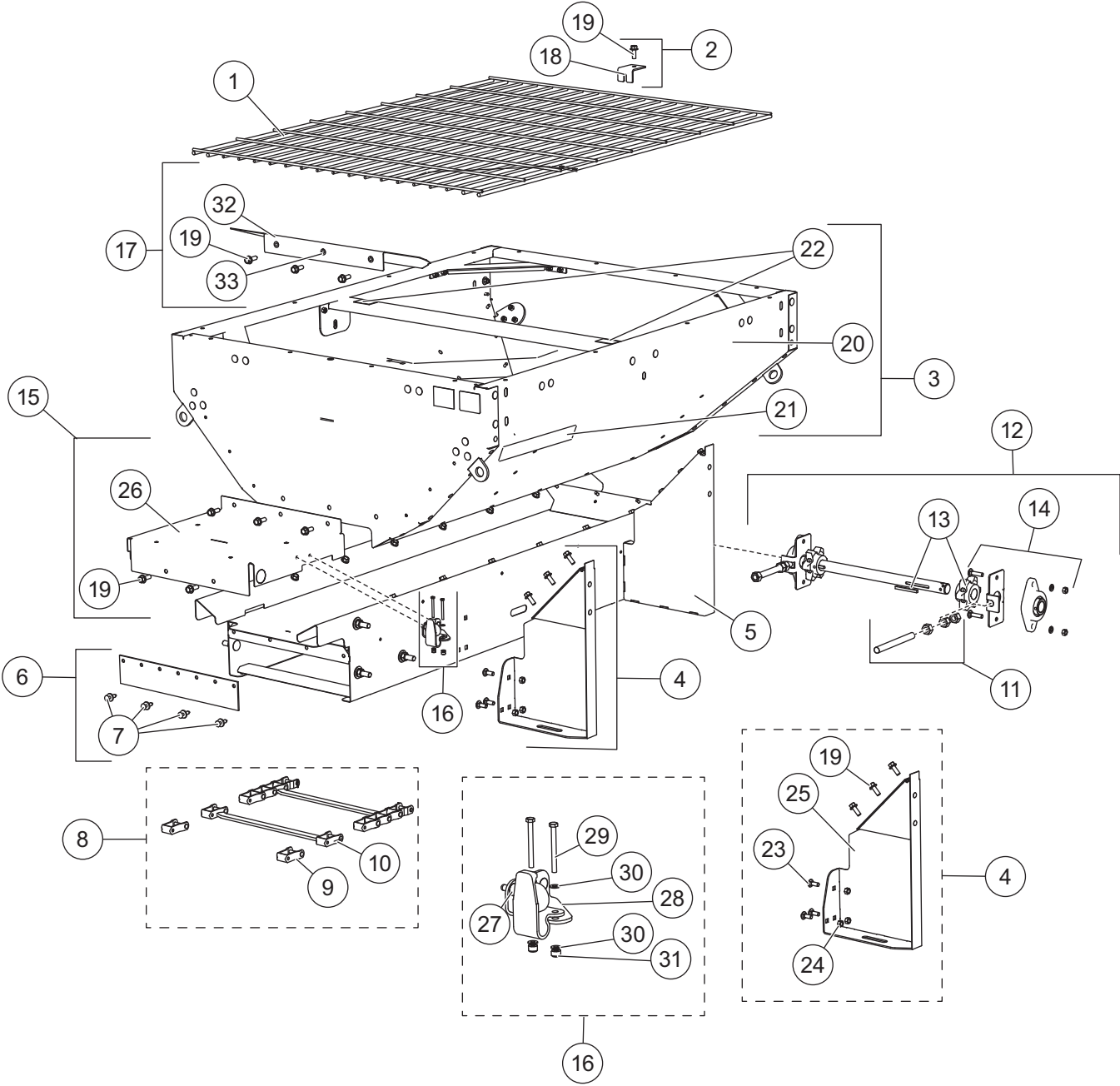


This Parts List is for FISHER® STEEL-CASTER hopper spreaders
with serial numbers beginning with 200706 and higher.

A DIVISION OF FISHER, LLC

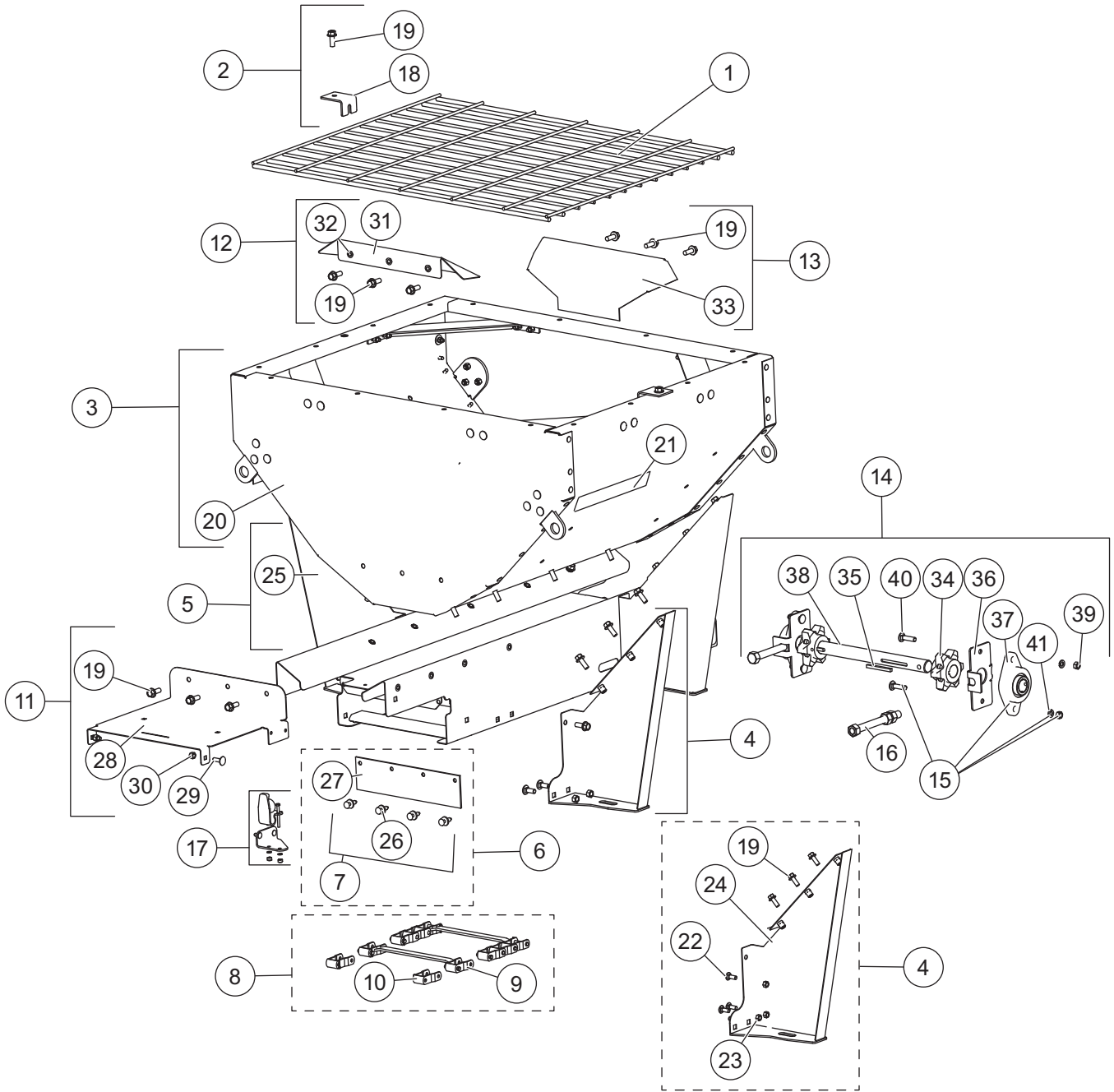
STEEL-CASTER™ HOPPER SPREADER

HOPPER COMPONENTS – 0.7 yd³



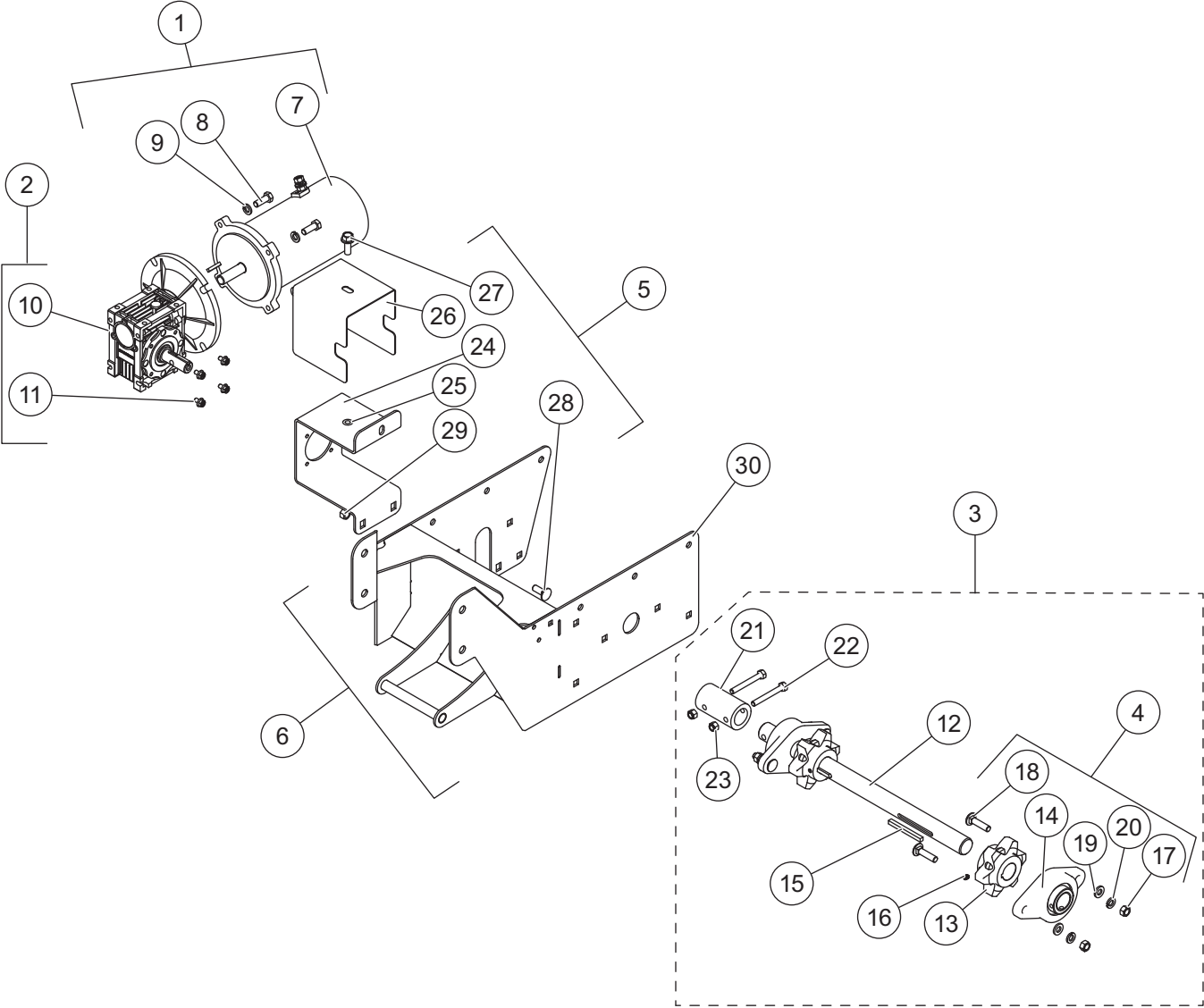
STEEL-CASTER™ HOPPER SPREADER

HOPPER COMPONENTS – 0.35 yd³



STEEL-CASTER™ HOPPER SPREADER

POWERGROUP COMPONENTS – 0.35 yd³

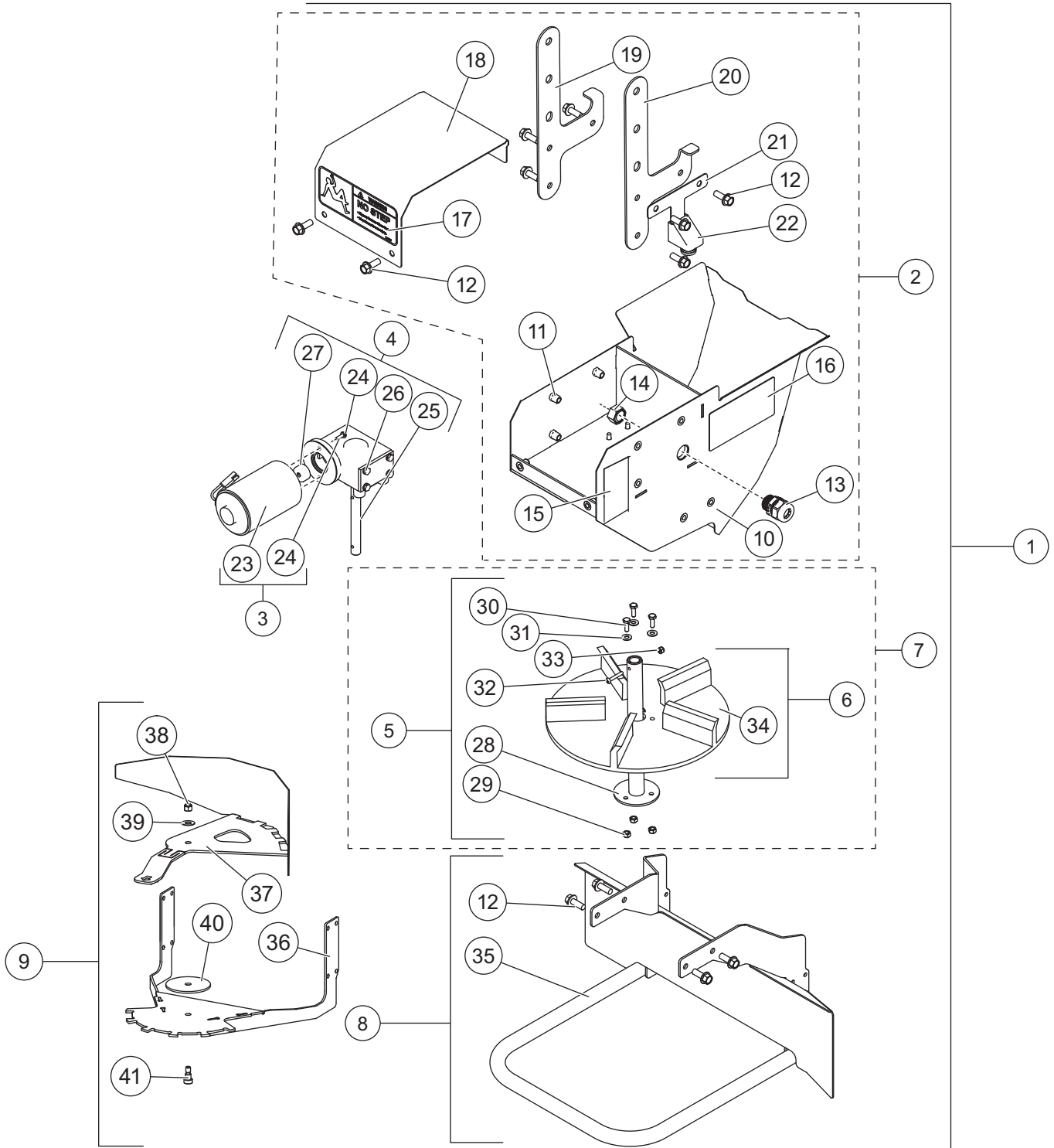


STEEL-CASTER™ HOPPER SPREADER

Powergroup Components – 0.35 yd³							
Item	Part	Qty	Description	Item	Part	Qty	Description
1	85479	1	Motor, 1/2 hp, 1750 rpm	4	94953	1	Spreader Bearing Kit
2	83267	1	Transmission Service Kit, 80:1	5	83263	1	Gear Box Bracket Kit – 0.35 yd ³
3	83264	1	Drive Shaft Kit – 0.35 yd ³	6	83262	1	Powergroup Mount Kit – 0.35 yd ³
Item 1				85479 Motor, 1/2 hp, 1750 rpm			
7	D6825-1	1	Motor, 1/2 hp, 1750 rpm	9		4	3/8 Spring Lock Washer SS
8		4	3/8-16 x 1 Hex Cap Screw SS	ns	65195	1	Machine Key, 0.188 sq x 1.000
Item 2				83267 Transmission Service Kit, 80:1			
10	10923	1	Transmission, 80:1 MRVC 040	11		1	M6-1 x 10 Flanged Hex Cap Screw
Item 3				83264 Drive Shaft Kit – 0.35 yd³			
12	74661	1	Gear Box Shaft	18		4	3/8-16 x 1-1/2 Carriage Bolt
13	65909	2	Drive Sprocket Machining 6T	19		4	3/8 Flat Washer, Type A Wide SS
14	94536	2	2-Bolt Flange Bearing, 1.125 ID	20		4	3/8 Spring Lock Washer SS
15	95076	2	2.75" Brass Key	21	74678	1	Drive Shaft Coupler – 0.35 yd ³
16		2	1/4-20 x 3/8 Socket Set Screw	22		2	5/16 x 2-1/4 Hex Cap Screw
17		4	3/8-16 Hex Nut SS	23		2	5/16-18 Hex Locknut GB
Item 4				94953 Spreader Bearing Kit			
14	94536	1	2-Bolt Flange Bearing, 1.125 ID	19		2	3/8 Flat Washer, Type A Wide SS
17		2	3/8-16 Hex Nut SS	20		2	3/8 Spring Lock Washer SS
18		2	3/8-16 x 1-1/2 Carriage Bolt				
Item 5				83263 Gear Box Bracket Kit – 0.35 yd³			
24		1	Gear Box Mount Bracket – 0.35 yd ³	27		2	3/8-16 x 1 Hex Cap Screw, SS
25		1	3/8-16 Hex Rivnut SS	28		2	3/8-16 x 1 Carriage Bolt
26		1	Motor Coupler Guard	29		2	3/8-16 Hex Locknut GB
Item 6				83262 Powergroup Mount Kit – 0.35 yd³			
30		1	Chain Powergroup Mount – 0.35 yd ³	ns		2	3/8-16 x 1 Carriage Bolt
ns		6	3/8-16 x 1 Hex Cap Screw, SS	ns		2	3/8-16 Hex Locknut GB
		SS = Stainless Steel				G = Grade	
						ns = not shown	
						M = Metric	

STEEL-CASTER™ HOPPER SPREADER

CHUTE & SPINNER DRIVE ASSEMBLY COMPONENTS – 0.7 yd³ & 0.35 yd³

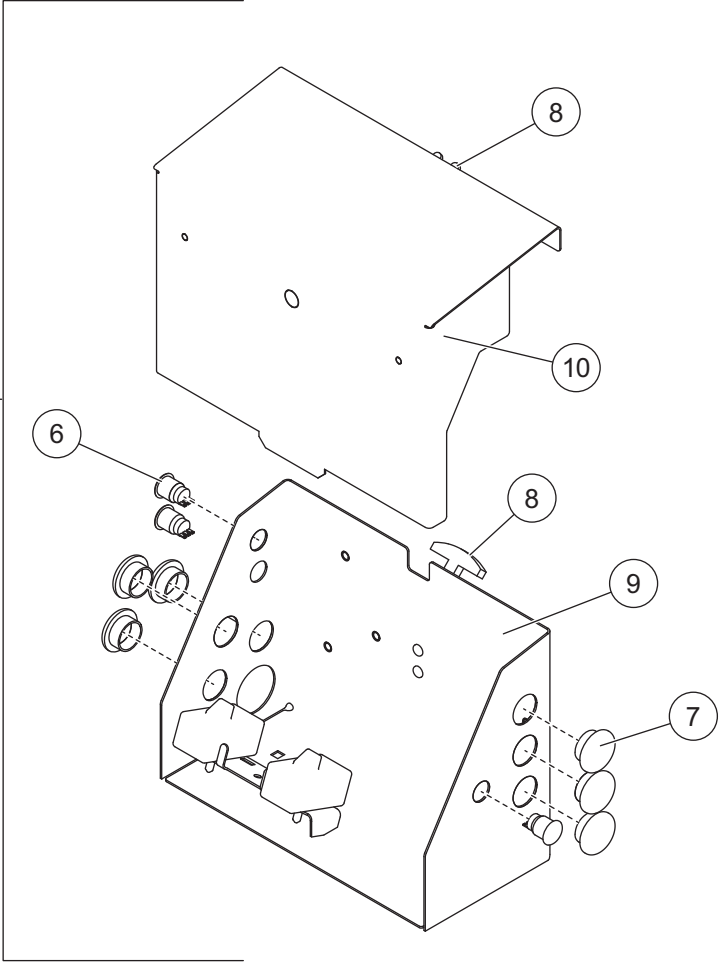
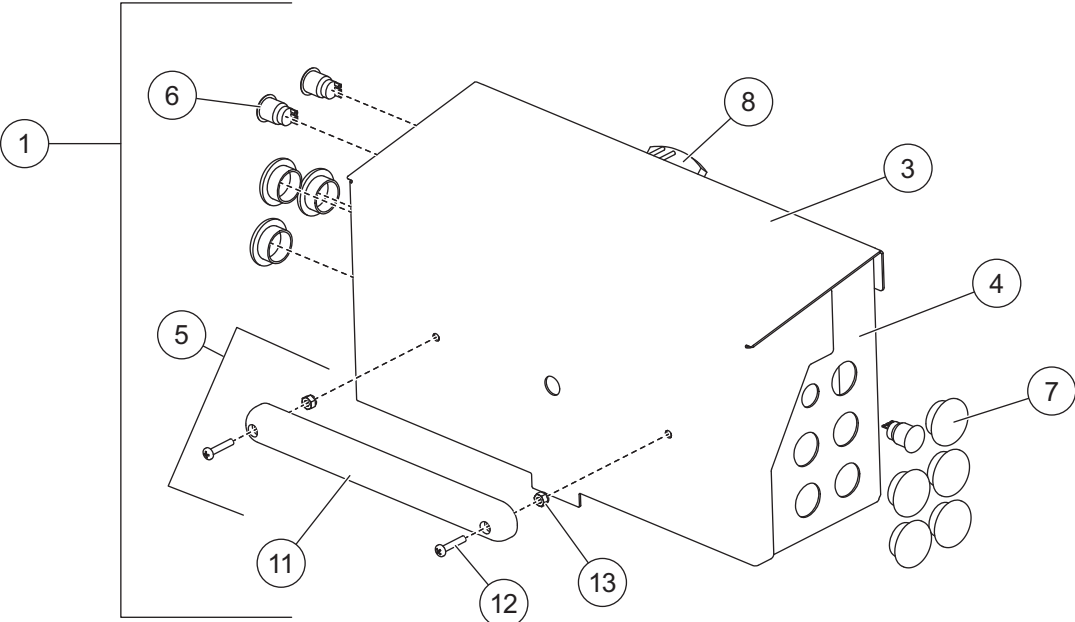


STEEL-CASTER™ HOPPER SPREADER

Chute & Spinner Drive Assembly Components							
Item	Part	Qty	Description	Item	Part	Qty	Description
1	83890	1	Chute Assembly	6	85438	1	Spinner Disk Service Kit
2	83888	1	Spinner Drive Housing	7	83887	1	Spinner Disk and Mount Kit
3	75901	1	Spinner Motor Service Kit	8	85437	1	Spinner Guard Service Kit
4	83722	1	Spinner Transmission Kit	9	83270	1	Shutter Accessory, Chute
5	83889	1	Spinner Mount Kit				
Item 1				83890 Chute Assembly			
	74690	1	Spinner Drive Assembly		91959	2	3/32 x 2-1/4 Hairpin Cotter
	11981	2	Chute Locking Pin				
Item 2				83888 Spinner Drive Housing			
10		1	Chute Motor Enclosure	17	D6545	1	Label – Warning, No Step
11		12	3/8-16 Hex Rivnut SS	18		1	Chute Motor Cover
12		12	3/8-16 x 1 Serrated Flange Hex Cap Screw SS	19	91639	1	Chute Hanger, DS
				20	91641	1	Chute Hanger, PS
13		1	10/2 3/4 NPT Strain Relief	21		1	Cable Boot Bracket
14		1	3/4 Nut, Nylon	22	11992	1	Dust Cover, Spinner Harness
15	29593	2	Label – Warning, Multiple Pinch Points	ns	11100	1	Label – Warning, Rear Camera
16	92969	1	Label – Warning, Chute Disconnect				
Item 3				75901 Spinner Motor Service Kit			
23	72690	1	Motor	24		2	#10-32 x 5/8 Hex Cap Screw
Item 4				83722 Spinner Transmission Kit			
24		2	#10-32 x 5/8 Hex Cap Screw	26		4	1/4-20 x 1/2 Hex Cap Screw
25	D6107	1	Worm Transmission 8:1, 5.9" Shaft	27	D6232	1	Motor Drive Coupler
Item 5				83889 Spinner Mount Kit			
28		1	Spinner Hub	31		3	1/4 Flat Washer Type A Narrow
29		3	1/4-20 Hex Locknut GB	32		2	#10-32 x 2 Hex Cap Screw
30		3	1/4-20 x 3/4 Hex Cap Screw SS	33		2	#10-32 Hex Locknut GB
Item 6				85438 Spinner Disk Service Kit			
34	D6823	1	12 x 5/8 Spinner	ns		3	1/4 Flat Washer SS
ns		3	1/4-20 x 1 Serrated Flange Hex Cap Screw SS	ns		3	1/4-20 Nylon Nut
Item 7				83887 Spinner Disk and Mount Kit			
5	83889	1	Spinner Mount Kit	6	85438	1	Spinner Disk Service Kit
Item 8				85437 Spinner Guard Service Kit			
12		4	3/8-16 x 1 Serrated Flange Hex Cap Screw SS	35		1	Deflector
Item 9				83270 Shutter Accessory, Chute			
36		1	Shutter Mount	39		1	3/8 Flat Washer SS
37		1	Shutter Deflector	40		1	Plastic Washer
38		2	5/16-18 Hex Locknut GB SS	41		1	3/8 x 5/16 x 5/16-18 Shoulder Bolt SS
		G = Grade				SS = Stainless Steel	
						ns = not shown	

STEEL-CASTER™ HOPPER SPREADER

ELECTRICAL ENCLOSURE ASSEMBLY – 0.7 yd³ & 0.35 yd³

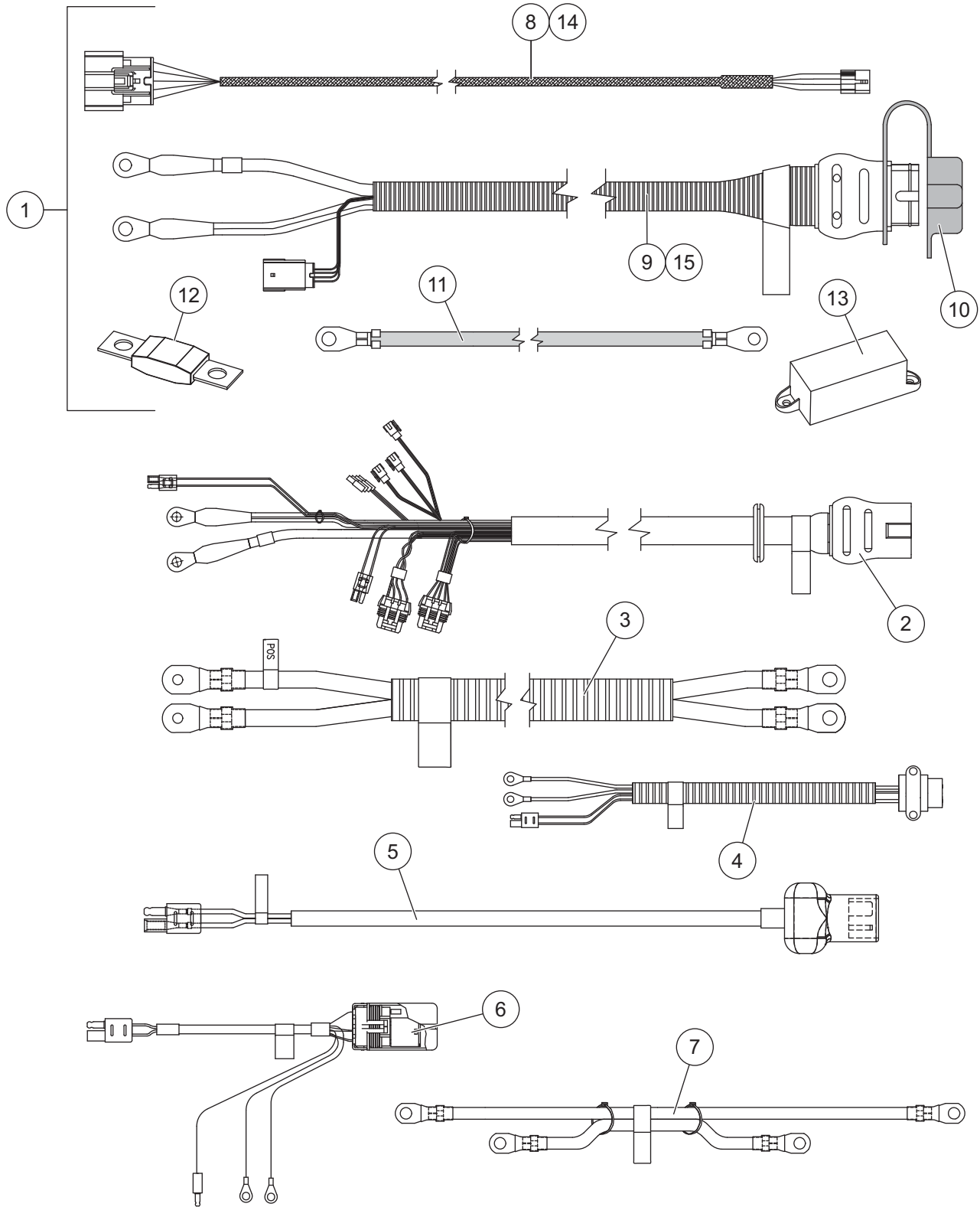


STEEL-CASTER™ HOPPER SPREADER

Electrical Enclosure Components							
Item	Part	Qty	Description	Item	Part	Qty	Description
1	83299	1	Electrical Box Assembly – 0.7 yd ³	2	83292	1	Electrical Box Assembly – 0.35 yd ³
Item 1				83299 Electrical Box Assembly – 0.7 yd³			
3		1	Mailbox Cover	8		1	Keeper
4		1	Electrical Enclosure – 0.7 yd ³	ns		1	Rubber Latch Assembly
5	99080	1	CHMSL Kit	ns		4	3/16 Pop Rivet
6	99254	3	Switch, Push Button MO	ns	87480	1	Label – Information, Feed/Work Light
7	99195	8	Break-Thru Plug	ns	85481	1	Label – Information, Feed Light
Item 2				83292 Electrical Box Assembly – 0.35 yd³			
6	99254	3	Switch, Push Button MO	ns		1	Rubber Latch Assembly
7	99195	6	Break-Thru Plug	ns		4	3/16 Pop Rivet
8		1	Keeper	ns	87480	1	Label – Information, Feed/Work Light
9		1	Electrical Enclosure – 0.35 yd ³	ns	85481	1	Label – Information, Feed Light
10		1	Mailbox Cover – 0.35 yd ³				
Item 5				99080 CHMSL Kit			
11		1	CHMSL w/8" Lead	13		2	#10-32 Hex Locknut GB SS
12		2	#10-32 x 1 Machine Screw				
		G = Grade				SS = Stainless Steel	
						ns = not shown	

STEEL-CASTER™ HOPPER SPREADER

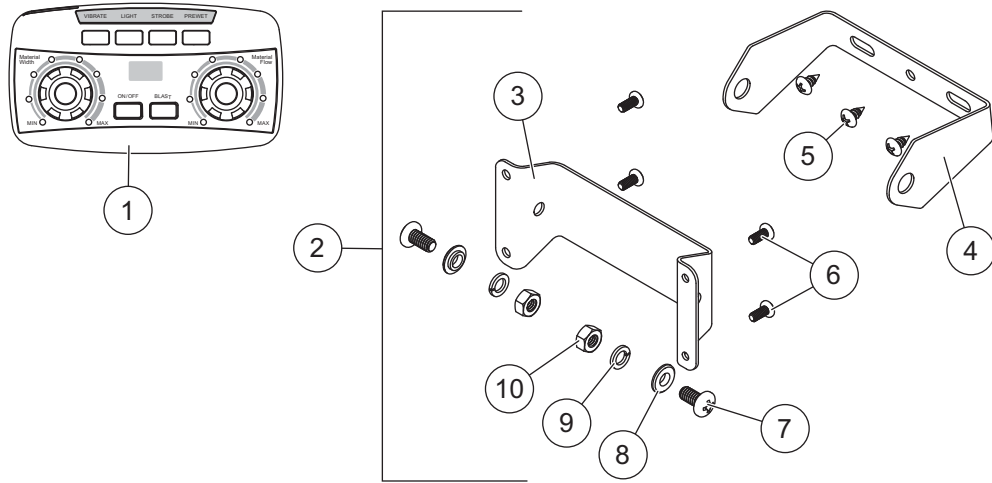
ELECTRICAL COMPONENTS – 0.7 yd³ & 0.35 yd³



Not drawn to scale.

STEEL-CASTER™ HOPPER SPREADER

CAB CONTROL



99533 Cab Control Kit							
Item	Part	Qty	Description	Item	Part	Qty	Description
1	99773	1	Cab Control 2-Knob	2	52345	1	Cab Control Bracket Kit
Item 2				52345 Cab Control Bracket Kit			
3		1	Bracket, Control Inner	7		2	1/4-20 x 1/2 Pan Head Machine Screw SS – Black Oxide
4		1	Bracket, Control Outer	8		2	1/4 Shoulder Washer – Black Oxide
5		3	#10 x 3/8 Tapping Screw SS	9		2	1/4 Lock Washer SS
6		4	#8-32 x 3/8 Phillips Pan Head Machine Screw	10		2	1/4-20 Hex Nut G5 – Black Oxide
G = Grade				SS = Stainless Steel			

STEEL-CASTER™ HOPPER SPREADER

ACCESSORIES

Accessory Kits			
Part	Description	Part	Description
99494	Strobe Light Kit	85696	Spill Guards – 0.35 yd ³
99505-1	Primary Work Light Kit	85697	Spill Guards – 0.7 yd ³
99732-1	Auxiliary Work Light Kit	85698	Side Extensions – 0.35 yd ³
85694	License Plate Kit	85699	Side Extensions – 0.7 yd ³
11763	Grease Point Kit (0.7 yd ³ only)	85693	Truck Conversion Kit – 0.35 yd ³
76668	Vibrator Kit	85706	Inverted V Kit – 0.35 yd ³
85692	Vehicle-Side Harness Kit – 0.35 yd ³	85707	Inverted V Kit – 0.7 yd ³
78402	Vehicle -Side Harness Kit – 0.7 yd ³	30059	Tarp Kit – 0.35 yd ³
68790	Ratchet Strap Kit (pkg of 4)	30061	Tarp Kit – 0.7 yd ³
85695	Pre-Wet, 50-gal	30055	Bungee Kit, 9" – 0.35 yd ³
99080	CHMSL Kit	30056	Bungee Kit, 15" – 0.7 yd ³

STEEL-CASTER™ HOPPER SPREADER



Fisher Engineering
50 Gordon Drive
Rockland, ME 04841-2139
www.fisherplows.com

A DIVISION OF FISHER, LLC

Copyright © 2021 Douglas Dynamics, LLC. All rights reserved. This material may not be reproduced or copied, in whole or in part, in any printed, mechanical, electronic, film, or other distribution and storage media, without the written consent of Fisher Engineering. Authorization to photocopy items for internal or personal use by Fisher Engineering outlets or spreader owner is granted.

Fisher Engineering reserves the right under its product improvement policy to change construction or design details and furnish equipment when so altered without reference to illustrations or specifications used. Fisher Engineering or the vehicle manufacturer may require or recommend optional equipment for spreaders. Do not exceed vehicle ratings with a spreader. Fisher Engineering offers a limited warranty for all spreaders and accessories. See separately printed page for this important information. The following are registered (®) or unregistered (™) trademarks of Douglas Dynamics, LLC: FISHER®, STEEL-CASTER™.

Printed in U.S.A.