



Western Products  
PO Box 245038  
Milwaukee, WI 53224-9538  
www.westernplows.com

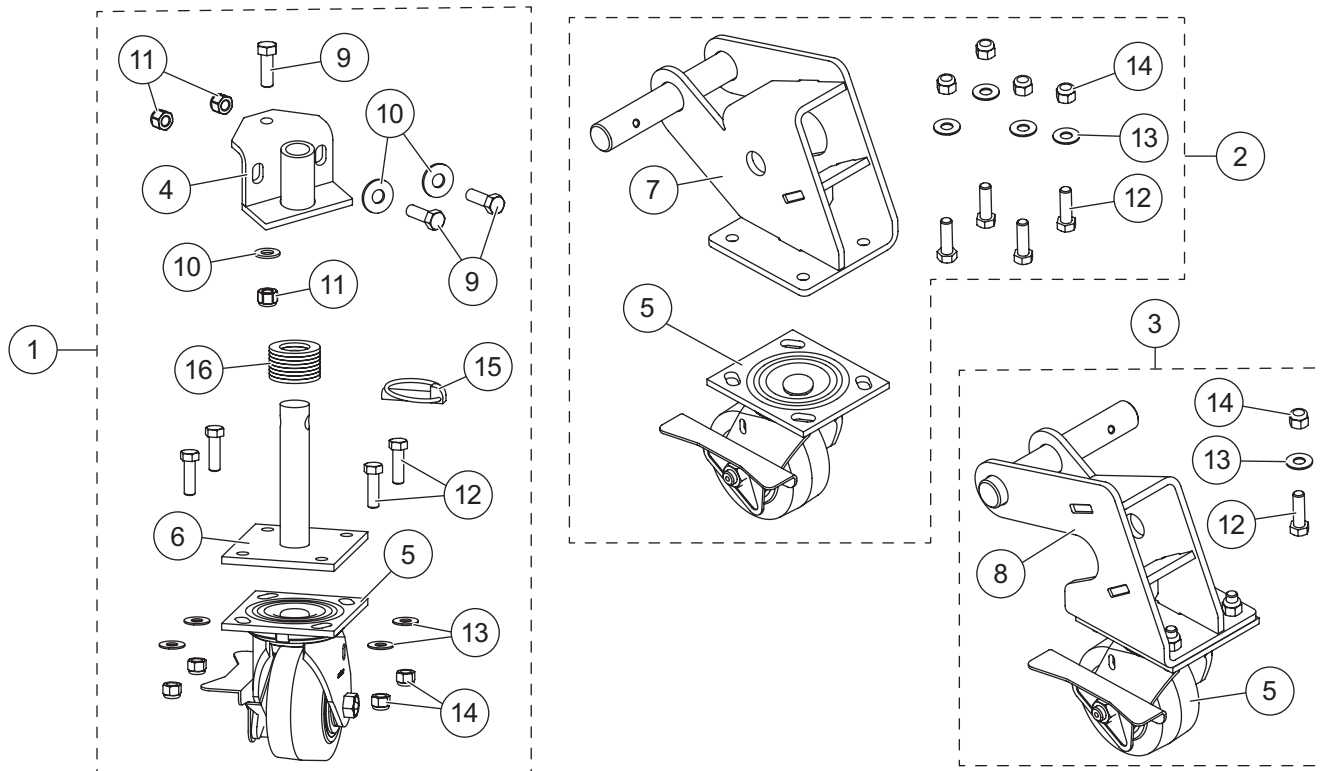
A DIVISION OF DOUGLAS DYNAMICS, LLC

79107 – PRO PLUS® HD Blade

Wheel Assembly Kit

Parts List & Installation Instructions

PARTS LIST



79107 Wheel Assembly Kit							
Item	Part	Qty	Description	Item	Part	Qty	Description
1	77074	2	Shoe Wheel Kit	3	77078	1	Receiver Wheel Kit – PS
	77076	1	Receiver Wheel Kit – DS				
<b>Item 1</b>				<b>77074 Shoe Wheel Kit</b>			
4	84376	1	Attachment Bracket	6	93289	1	Wheel Mount
5	93286	1	Swivel Caster Wheel	ns	77075	1	Bolt Bag, Shoe Wheel Kit
<b>Item 2</b>				<b>77076 Receiver Wheel Kit – DS</b>			
5	93286	1	Swivel Caster Wheel	ns	77077	1	Bolt Bag, Receiver Wheel Kit
7	57792	1	Rear Wheel Bracket – DS				
<b>Item 3</b>				<b>77078 Receiver Wheel Kit – PS</b>			
5	93286	1	Swivel Caster Wheel	ns	77077	1	Bolt Bag, Receiver Wheel Kit
8	57788	1	Rear Wheel Bracket – PS				
<b>ns</b>				<b>77075 Bolt Bag, Shoe Wheel Kit</b>			
9		3	1/2-13 x 1-1/2 Hex Cap Screw G5	13		4	3/8 Flat Washer SS
10		3	1/2 Flat Washer, Wide	14		4	3/8-16 Hex Locknut GB
11		3	1/2-13 Hex Locknut GB	15		1	7/16 x 1-3/4 Linchpin
12		4	3/8-16 x 1-1/4 Hex Cap Screw G5	16		8	Round Flat Washer, Special
<b>ns</b>				<b>77077 Bolt Bag, Receiver Wheel Kit</b>			
12		4	3/8-16 x 1-1/4 Hex Cap Screw G5	14		4	3/8-16 Hex Locknut GB
13		4	3/8 Flat Washer SS				
			ns = not shown				G = Grade
							SS = Stainless Steel

## 79107 PRO PLUS® HD WHEEL ASSEMBLY KIT

### ⚠ WARNING

Do not exceed GVWR or GAWR, including blade and ballast. The rating label is found on the driver-side vehicle door cornerpost.

### ⚠ WARNING

Blade can drop unexpectedly. Place blade on jack stands. Failure to do so could result in serious personal injury.

### ⚠ CAUTION

Read this document before installing the Wheel Assembly Kit.

### ⚠ CAUTION

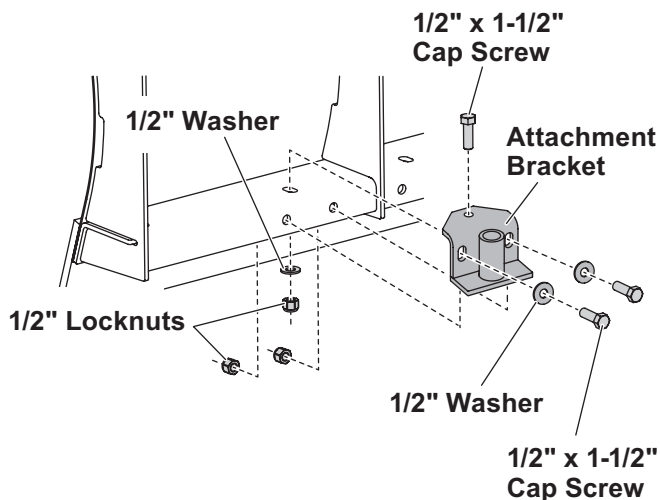
Use standard methods and practices when attaching snowplow and installing accessories, including proper personal protective safety equipment.

### ⚠ CAUTION

See your WESTERN® outlet/website for specific vehicle application recommendations before installation. The Quick Match selection system has specific vehicle and snowplow requirements.

## MOUNTING ATTACHMENT BRACKETS TO THE BLADE

1. Park the vehicle on a smooth, level, hard surface, such as concrete. Raise the blade, and then turn the control OFF.
2. From the front of the blade assembly, place jack stands under the blade.
3. Turn the control ON and lower the blade so the blade rests securely on the jack stands. Turn the control OFF. Turn the vehicle ignition to the "OFF" position and remove the key.
4. Position the attachment bracket to the blade base channel as shown. Align the holes in the attachment bracket with the holes in the base channel.
5. Loosely assemble each attachment bracket with two 1/2" x 1-1/2" cap screws, 1/2" washers, and 1/2" locknuts through the back of the bracket and base channel, and one 1/2" x 1-1/2" cap screw, 1/2" washer, and 1/2" locknut through the top hole in the bracket and base channel. Torque fasteners to 75 ft-lb.

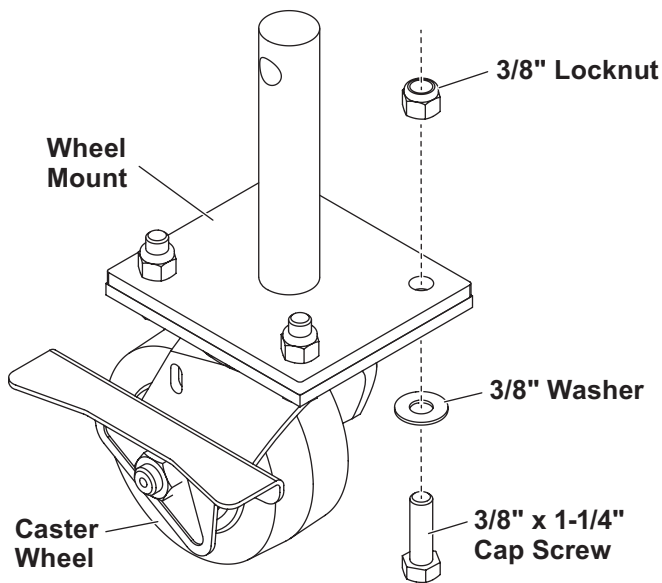


6. Repeat for the opposite side.

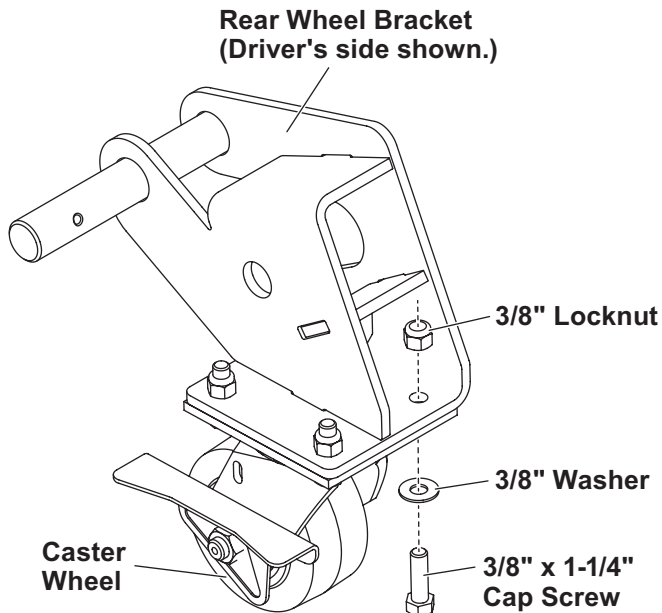
## 79107 PRO PLUS® HD WHEEL ASSEMBLY KIT

### MOUNTING CASTER WHEELS TO THE WHEEL MOUNTS & WHEEL BRACKETS

1. **For the shoe wheels:** Use the provided 3/8" hardware in the shoe wheel kit bolt bags to attach the caster wheels to the wheel mounts as shown.

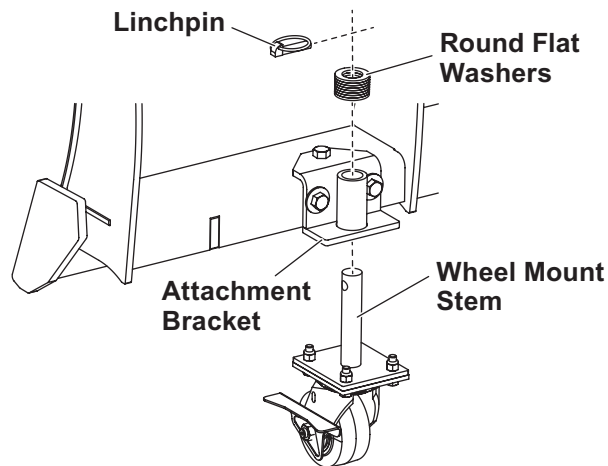


2. **For the receiver wheels:** Use the provided 3/8" hardware in the receiver wheel kit bolt bags to attach the caster wheels to the passenger-side and driver-side rear wheel brackets as shown.



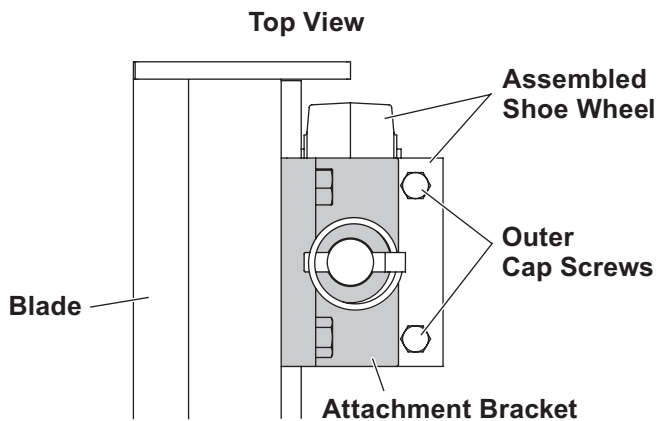
### ATTACHING SHOE WHEEL ASSEMBLIES

1. Insert the wheel mount stem through the bottom of the attachment bracket.
2. Adjust the wheel to the desired height by adding/removing the supplied round flat washers onto the wheel mount stem.



3. Secure the shoe wheel assembly to the blade using the supplied linchpin.

**IMPORTANT:** Align the outer cap screws on the shoe wheel assembly with the outer edge of the attachment bracket for smooth wheel movement.

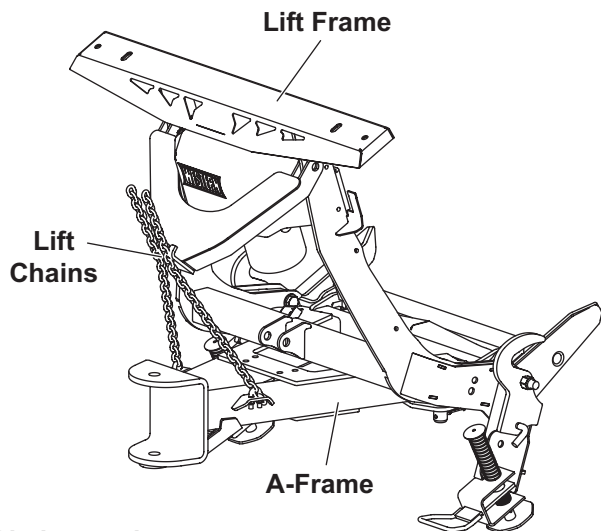


4. Repeat for the opposite side.
5. Turn the vehicle ignition to the "ON" position and turn the control ON. Slightly raise the blade, and then turn the control OFF.
6. Remove the jack stands and then lower the blade to the ground.

## 79107 PRO PLUS® HD WHEEL ASSEMBLY KIT

### INSTALLING RECEIVER WHEEL ASSEMBLIES TO THE LIFT FRAME

1. Detach the snowplow from the vehicle. Refer to the Owner's Manual for instructions.
2. Push the lift frame forward until it rests on the A-frame. Reposition the lift chains to remove any slack and to prevent any unexpected movement.

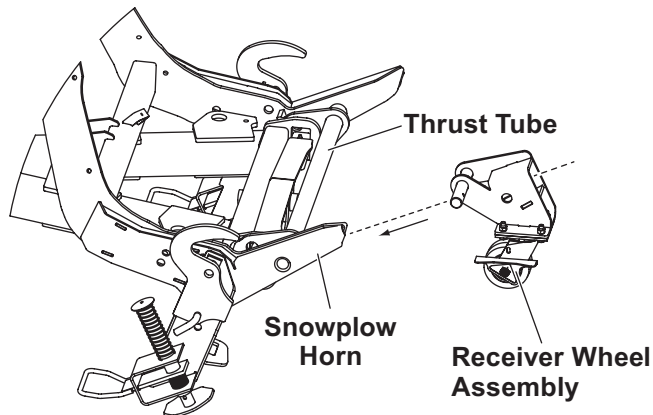


Blade not shown.

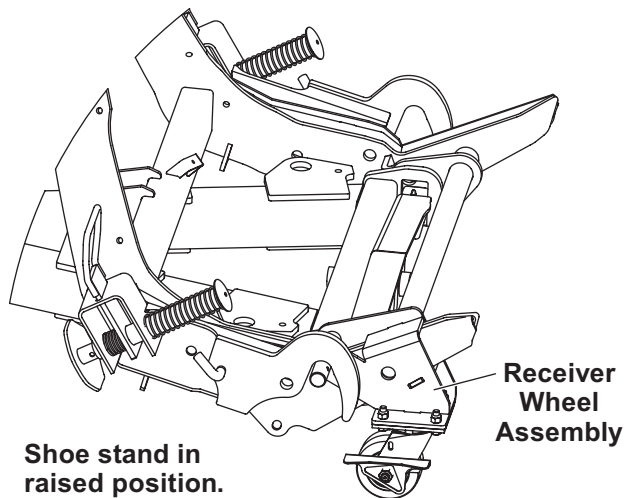
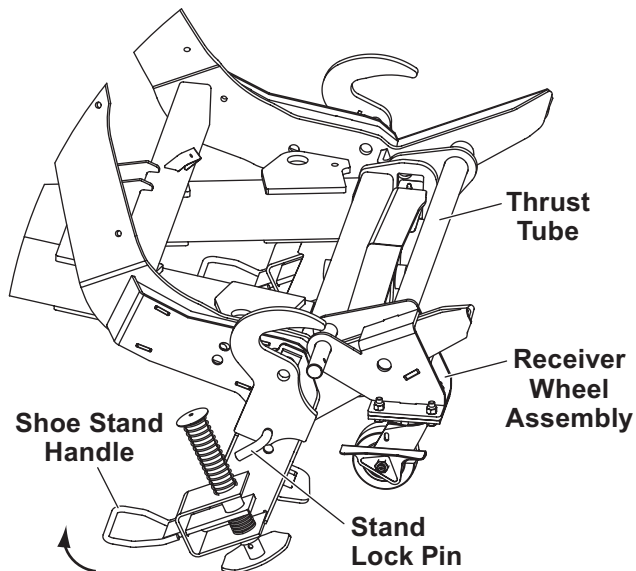
3. Place a floor jack under the thrust tube to raise the lift frame, and place a jack stand under the thrust tube. Lower the floor jack so the lift frame is resting on the jack stand.

**NOTE: Position the floor jack off to one side when raising the lift frame, and place the jack stand in the center of the thrust tube for better stability.**

4. Place the driver's side receiver wheel assembly on the snowplow horn as shown.



5. Repeat for the passenger's side.
6. Lift the driver's side shoe stand handle and release the stand lock pin so the shoe stand assembly rotates up until the stand lock pin fully engages.



7. Repeat for the passenger's side.
8. Use a floor jack to raise the back end of the lift frame and remove the jack stand. Slowly lower the snowplow to the ground until it is completely resting on all four wheels.

## USING THE WHEEL KIT

**⚠ CAUTION**

Be sure to engage the wheel brakes when the snowplow is left unattended to prevent accidental movement. Failure to do so could result in snowplow damage or personal injury.

**⚠ CAUTION**

The wheel kit assembly is for transporting the snowplow after it has been removed from the vehicle. Do not leave the wheel kit assembly attached while plowing. Failure to comply could damage the snowplow and/or vehicle.

To move the snowplow to the desired location, stand in front of the blade and push the snowplow. Pushing the snowplow from in front of the blade allows for better control and stability.

If pushing the snowplow from behind the blade or using the lift frame, be aware of the terrain and be careful of any cracks or obstacles in the floor.

## 79107 PRO PLUS® HD WHEEL ASSEMBLY KIT

---

Copyright © 2018 Douglas Dynamics, LLC. All rights reserved. This material may not be reproduced or copied, in whole or in part, in any printed, mechanical, electronic, film, or other distribution and storage media, without the written consent of Western Products. Authorization to photocopy items for internal or personal use by Western Products outlets or snowplow owner is granted.

Western Products reserves the right under its product improvement policy to change construction or design details and furnish equipment when so altered without reference to illustrations or specifications used. Western Products or the vehicle manufacturer may require or recommend optional equipment for snow removal. Do not exceed vehicle ratings with a snowplow. Western Products offers a limited warranty for all snowplows and accessories. See separately printed page for this important information. The following are registered (®) or unregistered (™) trademarks of Douglas Dynamics, LLC: PRO PLUS® HD, UltraMount® 2, WESTERN®.

**Printed in U.S.A.**

---