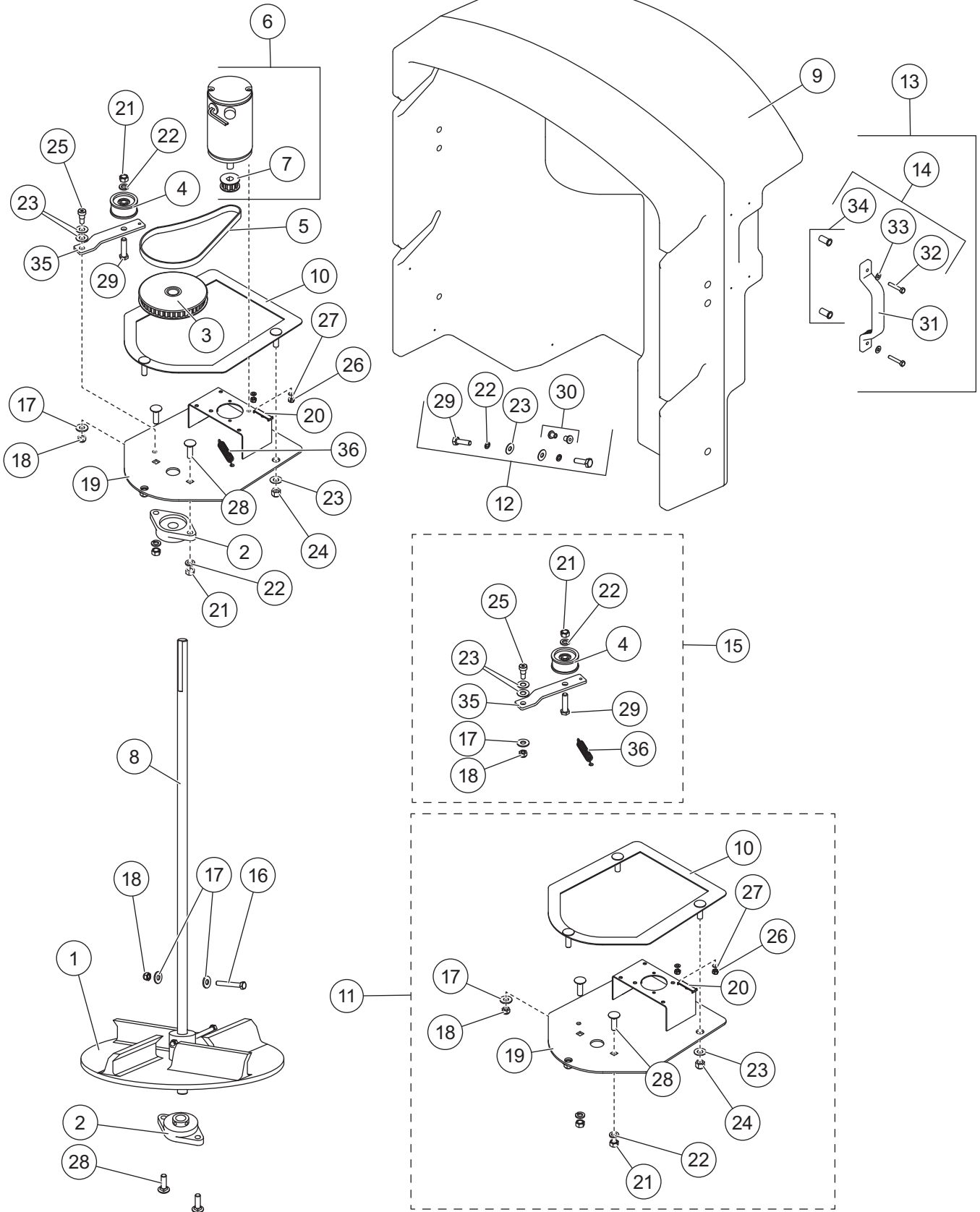


# Tornado™ HOPPER SPREADER

## CHUTE & SPINNER ASSEMBLY



# Tornado™ HOPPER SPREADER

<b>89770 Chute Assembly</b>							
<b>Item</b>	<b>Part</b>	<b>Qty</b>	<b>Description</b>	<b>Item</b>	<b>Part</b>	<b>Qty</b>	<b>Description</b>
1	94424	1	Spinner, Poly Two-Stage	10	30377	1	Bolt Plate (incl. items 23 and 24)
2	96167	2	2-Bolt Flanged Bearing, 0.750 ID	11	71236	1	Motor Mount Kit
3	76796	1	Cogged Belt Pulley, 40-Tooth, .75" ID	12	78268	2	3/8 Well Nut Fastener Kit
4	65509	1	2" Idler Pulley	13	78247	2	Chute Handle Kit
5	78285	1	Gear Belt, 3/8 Pitch	14	78270	4	1/4 Well Nut Fastener Kit
6	78300	1	Motor 12V DC 1/3 hp (incl. item 10)	15	78298	1	Idler Kit
7	76795	1	Cogged Belt Pulley, 10-Tooth, .5" ID	16		1	5/16-18 x 2-1/4 Hex Cap Screw SS
8	78283	1	Shaft, 0.75"	17		2	5/16 Flat Washer Type A Narrow
9	30372	1	Chute Cover	18		1	5/16-18 Hex Locknut GB SS
<b>Item 11</b>				<b>71236 Motor Mount Kit</b>			
10	30377	1	Bolt Plate (incl. items 23 and 24)	23		3	3/8 Flat Washer Type A Wide SS
17		1	5/16 Flat Washer Type A Narrow	24		3	3/8-16 Hex Locknut Brass
18		1	5/16-18 Hex Locknut GB SS	26		2	#10-32 Hex Locknut GB SS
19		1	Motor Mount	27		2	#10 Flat Washer Type A SS
20	76059	1	Bundling Clip	28		2	3/8-16 x 3/4 Carriage Bolt
21		2	3/8-16 Hex Nut SS	ns		2	Cable Tie
22		2	3/8 Spring Lock Washer SS				
<b>Item 12</b>				<b>78268 3/8 Well Nut Fastener Kit</b>			
22		2	3/8 Lock Washer SS	29		2	3/8-16 x 1-1/2 Hex Cap Screw SS
23		2	3/8 Flat Washer Type A Wide SS	30	78267	1	3/8-16 Well Nut (pkg of 2)
<b>Item 13</b>				<b>78247 Chute Handle Kit</b>			
14	78270	1	1/4 Well Nut Fastener Kit	31		1	Handle
<b>Item 14</b>				<b>78270 1/4 Well Nut Fastener Kit</b>			
32		2	1/4-20 x 1-1/2 Hex Cap Screw SS	34	78269	1	1/4-20 Well Nut (pkg of 2)
33		2	1/4 Flat Washer Type A Narrow SS				
<b>Item 15</b>				<b>78298 Idler Kit</b>			
4	65509	1	2" Idler Pulley	23		2	3/8 Flat Washer Type A Wide SS
17		1	5/16 Flat Washer Type A Narrow	25		1	3/8 x 3/8 x 5/16-18 Shoulder Bolt
18		1	5/16-18 Hex Locknut GB SS	29		1	3/8-16 x 1-1/2 Hex Cap Screw SS
21		2	3/8-16 Hex Nut SS	35		1	Idler Arm
22		1	3/8 Spring Lock Washer SS	36		1	Spring
			ns = not shown				G = Grade
							SS = Stainless Steel