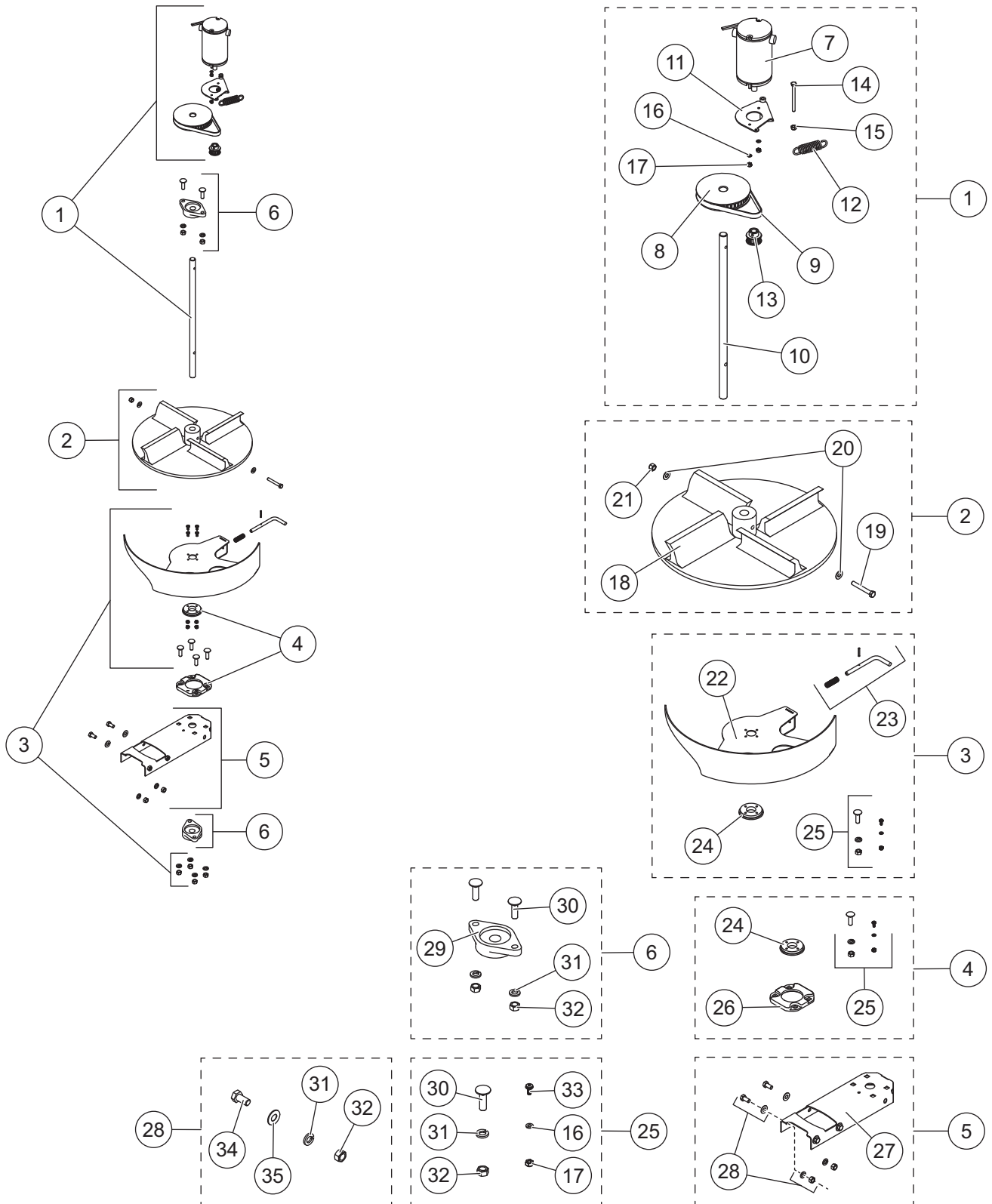


Striker™ HOPPER SPREADER

SPINNER DRIVE & SHUTTER ASSEMBLIES



Striker™ HOPPER SPREADER

| Spinner Drive & Shutter Assemblies | | | | | | | |
|---|-------------|------------|--------------------------------------|---|-------------|----------------|------------------------------------|
| Item | Part | Qty | Description | Item | Part | Qty | Description |
| 1 | 96506 | 1 | Chute Drive Service Kit | 4 | 96504 | 1 | Chute Shutter Bearing Kit |
| 2 | 99485 | 1 | Poly Spinner Kit | 5 | 96392 | 1 | Shutter Bearing Support Kit |
| 3 | 99135 | 1 | Shutter Replacement Kit | 6 | 96501 | 2 | Bearing Kit |
| Item 1 | | | | 96506 Chute Drive Service Kit | | | |
| 7 | 93200* | 1 | Motor 12V 1/3-hp | 13 | 76795 | 1 | 10-Tooth Pulley, Drive Gear |
| 8 | 76796 | 1 | 40-Tooth Cogged Belt Pulley 3/4 Bore | ns | 99614 | 1 | Bolt Bag – Chute Service Kit |
| 9 | M1355 | 1 | Spinner Drive Belt | 14 | | 1 | 1/4-20 x 3 Hex Cap Screw SS |
| 10 | 99228 | 1 | Spinner Shaft | 15 | | 1 | 1/4-20 Locknut GB SS |
| 11 | 80028 | 1 | Spinner Motor Tensioner Plate | 16 | | 2 | #10 Flat Washer SS |
| 12 | 99776 | 1 | Spinner Motor Spring SS | 17 | | 2 | #10-32 Locknut GB SS |
| Item 2 | | | | 99485 Poly Spinner Kit | | | |
| 18 | | 1 | Spinner, Black Poly – CW Rotation | 20 | | 2 | 5/16 Flat Washer SS |
| 19 | | 1 | 5/16-18 x 2-1/4 Hex Cap Screw SS | 21 | | 1 | 5/16-18 Locknut GB SS |
| Item 3 | | | | 99135 Shutter Replacement Kit | | | |
| 22 | | 1 | Chute Shutter | 24 | | 1 | Chute Shutter Bearing – Inner |
| 23 | 96505 | 1 | Shutter Lock Pin Kit | 25 | 99615 | 1 | Bolt Bag – Shutter |
| Item 4 | | | | 96504 Chute Shutter Bearing Kit | | | |
| 24 | | 1 | Chute Shutter Bearing – Inner | 26 | | 1 | Chute Shutter Bearing – Outer |
| 25 | 99615 | 1 | Bolt Bag – Shutter | | | | |
| Item 5 | | | | 96392 Shutter Bearing Support Kit | | | |
| 27 | | 1 | Chute Lower Bearing Support | 28 | 96529 | 1 | Bolt Bag – Shutter Bearing Support |
| Item 6 | | | | 96501 Bearing Kit | | | |
| 29 | 96167 | 1 | Pillow Block Bearing 3/4 Bore | 31 | | 2 | 3/8 Lock Washer SS |
| 30 | | 2 | 3/8-16 x 1-1/4 Carriage Bolt | 32 | | 2 | 3/8-16 Hex Nut SS |
| Item 25 | | | | 99615 Bolt Bag – Shutter | | | |
| 16 | | 4 | #10 Flat Washer SS | 31 | | 4 | 3/8 Lock Washer SS |
| 17 | | 4 | #10-32 Locknut GB SS | 32 | | 4 | 3/8-16 Hex Nut SS |
| 30 | | 4 | 3/8-16 x 1-1/4 Carriage Bolt | 33 | | 4 | #10-32 x 1/2 #2 Pan Head Screw SS |
| Item 28 | | | | 96529 Bolt Bag – Shutter Bearing Support | | | |
| 31 | | 4 | 3/8 Lock Washer SS | 34 | | 4 | 3/8-16 x 3/4 Hex Cap Screw SS |
| 32 | | 4 | 3/8-16 Hex Nut SS | 35 | | 4 | 3/8 Flat Washer SS |
| | | | SS = Stainless Steel | | | ns = not shown | G = Grade |

* Requires 80028 if purchasing 93200 to replace 93100.