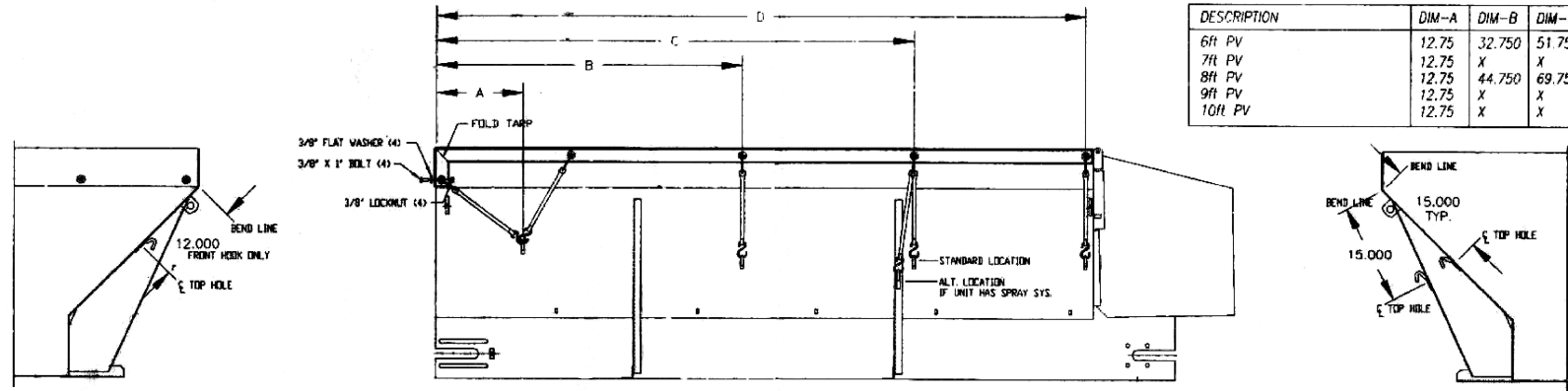


DESCRIPTION	PART No	QTY	PART No	QTY	PART No	QTY	PART No	QTY
TARP	04034-035-00	01	04034-018-00	01	04034-xxx-xx	01	04034-xxx-xx	01
TARP HOOK	04019-022-00	12	04019-022-00	12	04019-022-00	12	04019-022-00	12
TARP STRAP	04019-015-00	12	04019-015-00	12	04019-015-00	12	04019-015-00	12
BOLT, 3/8-16 x 1 HH	04003-003-03	05	04003-003-03	05	04003-003-03	05	04003-003-03	05
FLATWASHER	04004-002-08	05	04004-002-08	05	04004-002-08	05	04004-002-08	05
LOCKNUT	04003-804-02	05	04003-804-02	05	04003-804-02	05	04003-804-02	05
SCREW, 1/4-20 x 3/4 TEK	04002-066-02	24	04002-066-02	24	04002-066-02	24	04002-066-02	24

DESCRIPTION	DIM-A	DIM-B	DIM-C	DIM-D
6ft PV	12.75	32.750	51.750	70.750
7ft PV	12.75	X	X	X
8ft PV	12.75	44.750	69.750	94.750
9ft PV	12.75	X	X	X
10ft PV	12.75	X	X	X



FRONT VIEW

SIDE VIEW

REAR VIEW

INSTRUCTIONS

- 1) CENTER WIDTH OF TARP ON HOPPER (END WITH 6 GROMMETS TO FRONT OF HOPPER).
- 2) ALIGN FRONT EDGE OF TARP WITH BEND ON FRONT PANEL.
- 3) MARK FRONT GROMMETS LOCATIONS AND DRILL (4) 13/32 DIA. HOLES.
- 4) SECURE FRONT OF TARP WITH 3/8" HARDWARE SUPPLIED.
- 5) USING TARP HOOKS AS A GUIDE, MARK AND DRILL 1/8" DIA HOLES AT LOCATIONS SPECIFIED.
- 6) SECURE TARP HOOKS TO HOPPER WITH SELF-TAPPING SCREWS SUPPLIED.
- 7) ATTACH TARP STRAPS.

REV	E.C.O.	REVISION	DATE	BY	APPV	WHERE USED	ITEM	PART NUMBER	QTY
A	--	ADDED 6 FT TABULATIONS	6/10	JG	JG	PV			
REV	E.C.O.	REVISION	DATE	BY	APPV	<p><b>DO NOT SCALE DRAWING</b></p> <p>FOR TOLERANCES SEE FORM M10-7 UNLESS OTHERWISE SPECIFIED</p>	MATERIAL:	<p>LINDENWOOD ILLINOIS</p>	
						SCALE 1/16 (EXCEPT AS NOTED)	DATE 3/17/04	TITLE INST. PV TARP MOUNTING	
						REF. DRAWING	CADD FILENAME:	DRAWING SIZE B	DRAWING No: 00108-791-00