

## RT3 Undercarriage

2019 and After GM 4500 or 5500 or 6500 Heavy-Duty International CV Truck

Part No. LTA16245C—Serial No. 40000000 and Up

Part No. LTA16255C—Serial No. 40000000 and Up

### Installation Instructions

BOSS Products limited consumer warranty and BOSS Products commercial warranty policies are located at [www.BOSSPlow.com](http://www.BOSSPlow.com).

Patent: [www.ttcopats.com](http://www.ttcopats.com).

## Safety

- Always follow the vehicle manufacturer's recommendations relating to system installation. For recommended vehicle models, refer to the *BOSS Snowplow Application Chart and Selection Guide*.
- Never disable, remove, or relocate any sensors or other components related to the operation of the air bags.
- To comply with federal regulations and to assure a safe vehicle, do not exceed the front gross-axle-weight rating (FGAWR), rear gross-axle-weight rating (RGAWR), and the gross-vehicle-weight rating (GVWR) at any time.
- Due to the variety of equipment that you can install on the vehicle and undercarriage, do not exceed the front gross-axle-weight rating (FGAWR), rear gross-axle-weight rating (RGAWR), and the gross-vehicle-weight rating (GVWR) at any time. This may require weighing the vehicle and adding ballast as necessary. It may also limit the payload capacity of the vehicle.

## Installation

Determine the left and right sides of the machine from the normal operating position.

1. Park the machine on a level surface, shut off the engine, wait for all moving parts to stop, engage the parking brake, and remove the key.
2. If your vehicle is equipped with a front stabilizer bar, remove it.
3. Remove the existing fasteners shown in [Figure 1](#).

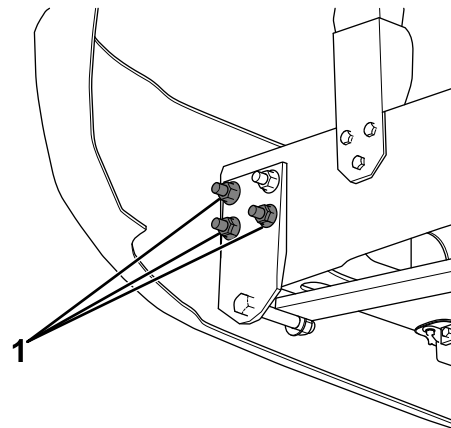
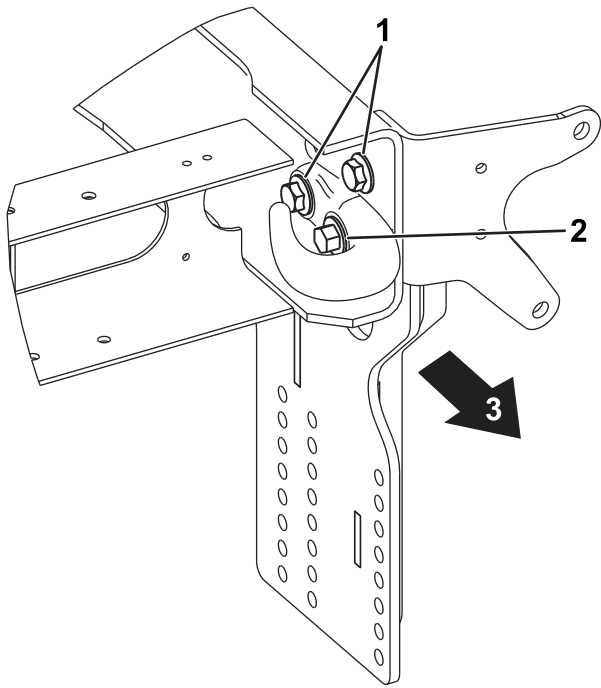


Figure 1

g279365

1. Remove these fasteners.
4. Loosely secure the sideplates to the vehicle frame using 1 bolts (M16), 1 locknut, and 4 of the previously removed bolts and nuts ([Figure 2](#) and [Figure 3](#)).

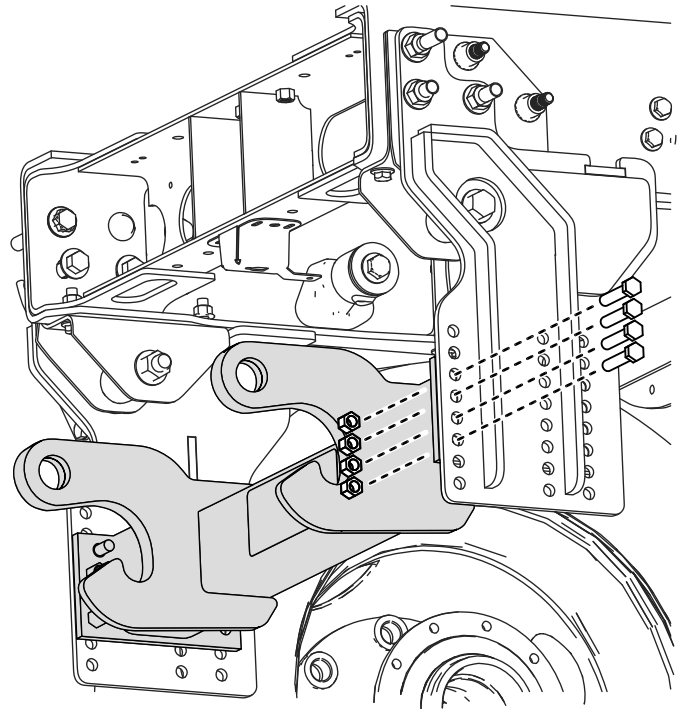




**Figure 2**

g344946

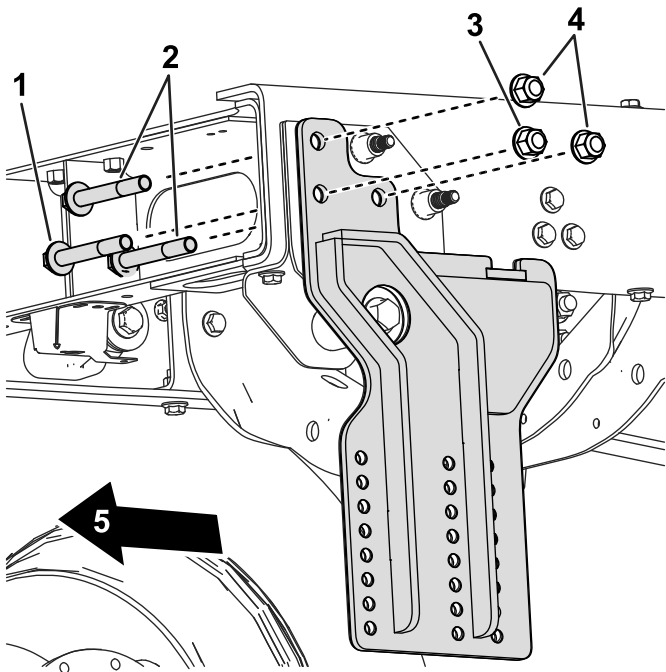
- |                                |                         |
|--------------------------------|-------------------------|
| 1. Previously removed hardware | 3. Front of the vehicle |
| 2. Bolt (M16)                  |                         |



**Figure 4**

Model LTA16245C

g330486



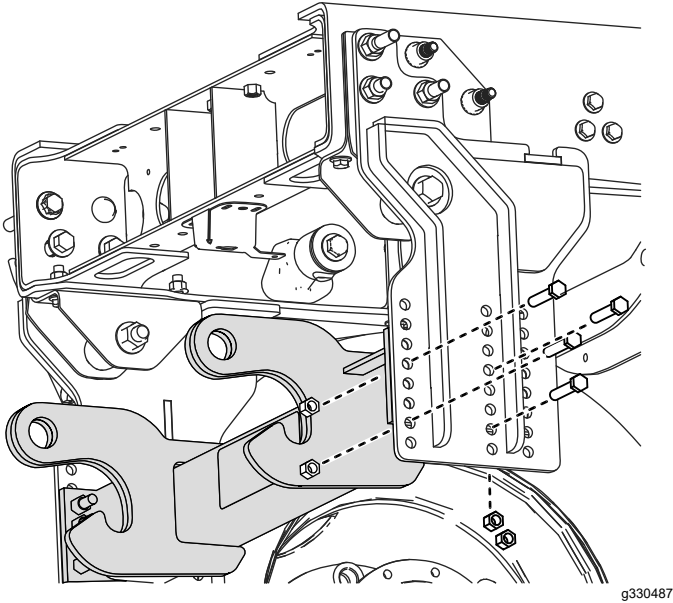
**Figure 3**

g344932

- |                             |                            |
|-----------------------------|----------------------------|
| 1. Bolt (M16)               | 4. Previously removed nuts |
| 2. Previously removed bolts | 5. Front of the vehicle    |
| 3. Locknut                  |                            |

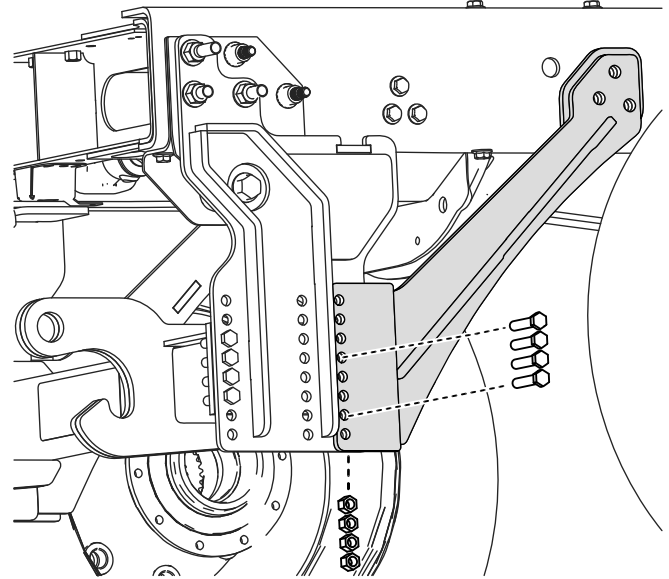
5. Loosely secure the pushbeam according to your model:

- For model LTA16255C, loosely secure the pushbeam to the sideplates using 8 bolts (1/2 x 1-1/2 inches) and locknuts (**Figure 5**).



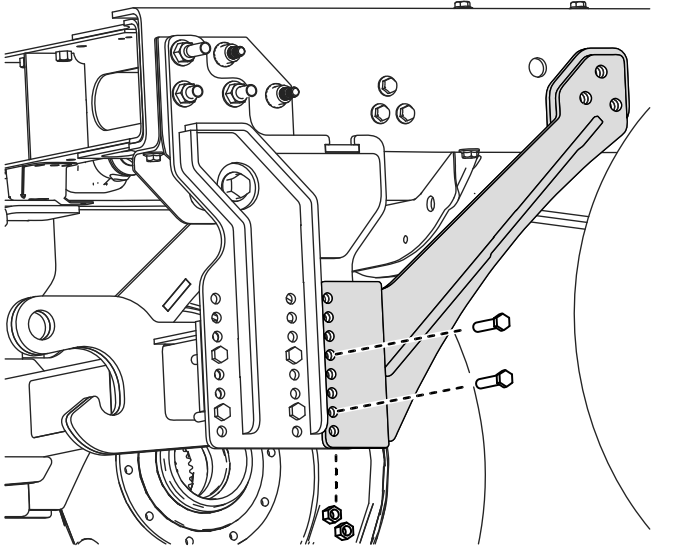
**Figure 5**  
Model LTA16255C

6. Loosely attach the bottom of the angle brackets to the sideplates according to your model:
  - For model LTA16245C, loosely secure the bottom of the angle bracket to the rear of the sideplate and pushbeam using 8 bolts (1/2 x 2-1/2 inches) and locknuts (**Figure 6**).



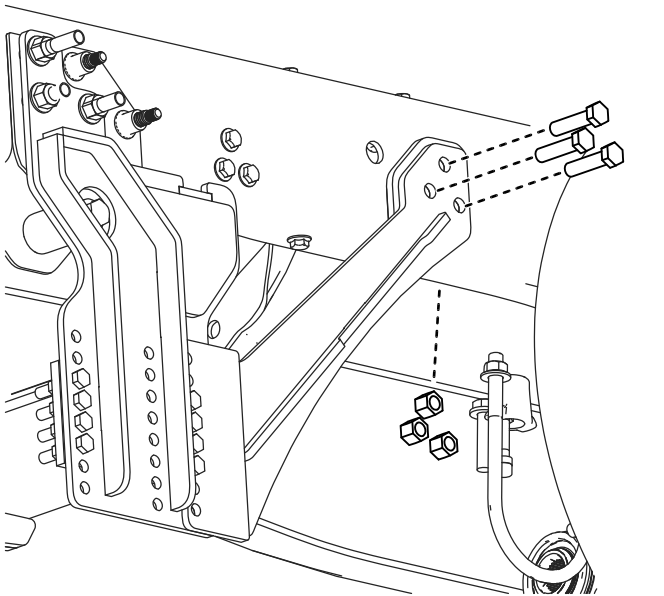
**Figure 6**  
Model LTA16245C

- For model LTA16255B, loosely secure the bottom of the angle bracket to the rear of the sideplate using 4 bolts (1/2 x 1-1/2 inches) and locknuts (Figure 7).



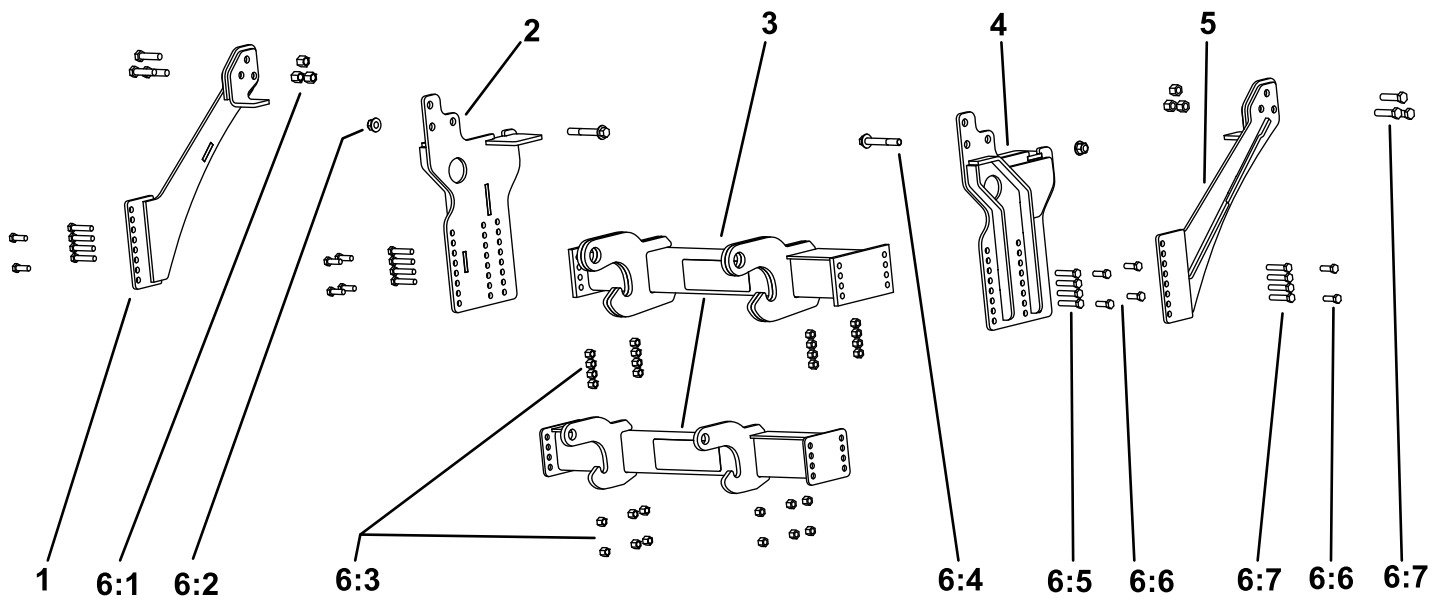
**Figure 7**  
Model LTA16255B

- 
7. Loosely secure the top of the angle brackets to the vehicle frame using 3 bolts (1/2 x 2-1/2 inches) and locknuts (Figure 8).



**Figure 8**

- 
8. Torque all the fasteners to the following specifications:
    - M16 bolts to 257 N·m (190 ft-lb)
    - 1/2-inch bolts to 76 N·m (56 ft-lb)
    - 5/8-inch bolts to 153 N·m (113 ft-lb)



g344929

**Parts**

Ref.	Part Number	Qty.	Description	Ref.	Part Number	Qty.	Description
1	LTA17715	1	ANG BRKT,PS,GM 45/55/6500,INTL CV,19+	6:1	HDW05619	6	NUT, 5/8-11, NYL INS, YZN
2	PBA17705	1	PBSP,PS,GM 45/55/6500,INTL CV,19+	6:2	HDW10399	2	NUT, NYLOCK, M16, 10.9, FLANGE HEAD, YZN
	PBA16260-03 (for model LTA16245C)		PB ASM, HD, GM 45/55/6500, INTL CV, 19+	6:3	HDW01748	16	NUT, 1/2-13, NYL INS, YZN
3	PBA16291-03 (for model LTA16255C)	1	PB ASM, GM 45/55/6500, 19+	6:5	HDW01755	8	HHCS 1/2-13X2 GR5 YZN
4	PBA17700	1	PBSP,DR,GM 45/55/6500,INTL CV,19+	6:4	HDW15422	2	HHCS, M16 X 110 MM, 10.9, FLANGE HEAD, YZN
5	LTA17710	1	ANG BRKT,DR,GM 45/55/6500,INTL CV,19+	6:6	HDW01728 (for model LTA16255C)	12	HHCS, 1/2-13 X 1-1/2, NC, GR5, YZN
6	HDW16256	1	KIT-FASTENER, GM 45/55/6500, INTL CV, 19+	6:7	HDW05917	14	HHCS, 1/2-13 X 2-1/2, GR5, PLT
				6:7	HDW05917 (for model LTA16245C)	8	HHCS, 1/2-13 X 2-1/2, GR5, PLT
				6:7	HDW05917 (for both models)	6	HHCS, 1/2-13 X 2-1/2, GR5, PLT

**Notes:**

**Notes:**

**BOSS**  
S N O W P L O W