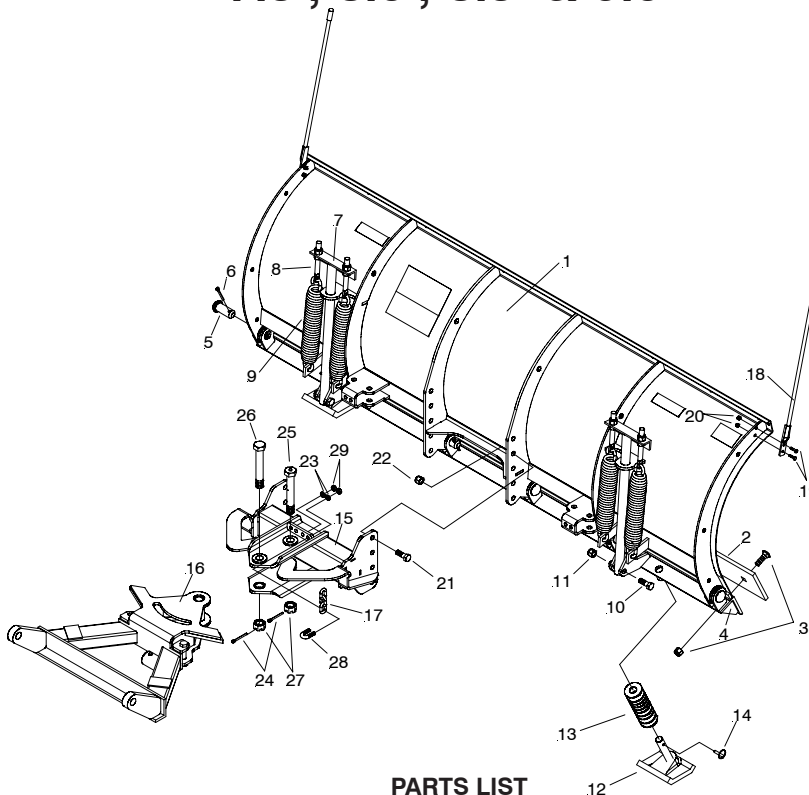




E-Z Mount Plus™ DAG Blade Assembly

7.5', 8.0', 8.5' & 9.0'



PARTS LIST

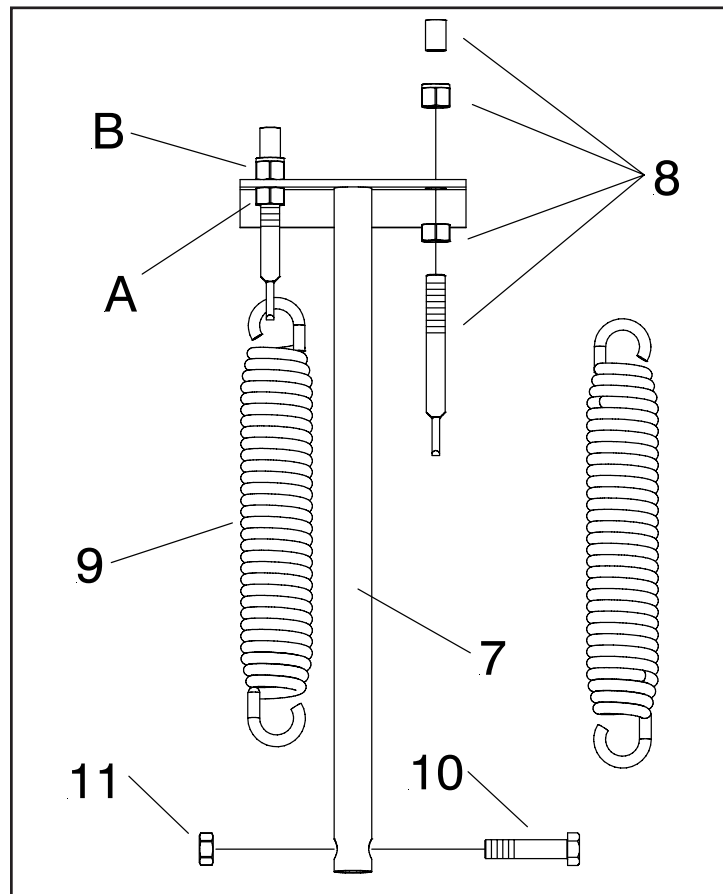
Item	Part No.	Part No.	Part No.	Part No.	Qty.	Description
	DAG-7.5	DAG-8.0	DAG-8.5	DAG-9.0		
1	84250	84251	84252	84253	1	DAG Moldboard Assy.
	84260	84261	84262	84263	1	• Moldboard Weld
2	8CE7.5	8CE8.0	8CE8.5	8CE9.0	1	• Cutting Edge
3	8CEBB	8CEBB	8CEBB	8CEBB	1	• Bolt C 5/8-11 x 2" Gr.5 & Locknut (Kit of 10)
4	84270	84271	84272	84273	1	• Trip Edge Weldment
5	81100003003	81100003003	81100003003	81100003003	6	• Pin 1-3/16 x 2-13/16"
6	20420	20420	20420	20420	6	• Cotter Pin 1/4 x 2"
7	12528	12528	12528	12528	2	• T-Bar Weldment
8	09124	09124	09124	09124	4	• Eye Bolt w/Locknut & Cap
9	07017	07017	07017	07017	4	• Trip Spring
10	20144	20144	20144	20144	2	• Bolt H 5/8 - 11 x 2-3/4" Gr. 5
11	20318	20318	20318	20318	2	• Locknut Esna 5/8-11
12	84040	84040	84040	84040	2	• Wear Shoe Assy
13	20361	20361	20361	20361	20	• Flatwasher 1"
14	811000224	811000224	811000224	811000224	2	• 5/16" Lynch Pin

Item	Part No.	Qty.	Description
	16544	1	EZ Mount Plus® Diamond PAF
15	81036	1	• Diamond Xp Pivot Bar
16	81037	1	• DAG Plus Push Frame
17	8511002008036	2	• Chain 5/16 x 36" Plated
	08852	1	• Plow Marker Kit
18	811000095	2	•• Plow Marker
19	22250	4	•• Bolt 1/4-20 x 1 (18-8 SS)
20	22249	4	•• Locknut 1/4-20 (18-8 SS)
	08125	1	• HARDWARE BAG
21	20140	8	•• Bolt H 5/8-11 x 1-3/4" Gr. 5
22	20309	8	•• Locknut Esna 5/8-11
23	20328	4	•• Lockwasher 7/16
24	20420	2	•• Cotter Pin 1/4 x 2"
25	22272	1	•• King Bolt H 1-8 x 6-1/2 w/ Grease Fitting
26	22273	1	•• Pivot Bolt H 1-8 x 6-1/2
27	22274	2	•• Slotted Hex Nut 1-8
28	8518001026	2	•• U-Bolt
29	8501001007	4	•• Hex Nut 7/16-14

Parts indented are included in the carton, bag or assembly under which they are indented.

CAUTION: CHECK THE TRIPEDGE ADJUSTMENT AT THIS TIME.

- A. THE SPRINGS ARE PROPERLY ADJUSTED WHEN A PIECE OF PAPER CAN BE PLACED BETWEEN EACH COIL.
- B. IF THE TRIPEDGE SPRINGS NEED ADJUSTMENT, LOOSEN THE BOTTOM NUT (A) ON BOTH SPRING ASSEMBLIES. ROTATE THE TOP LOCKNUT NUT (B) UNTIL THE SPRINGS ARE PROPERLY ADJUSTED.
- C. BE SURE TO TIGHTEN THE BOTTOM NUT SECURELY ON BOTH ASSEMBLIES TO PREVENT LOOSENING OF THE ASSEMBLIES.



Spring Assembly

Meyer Products Inc. and Diamond Equipment reserves the right, under its continuing product improvement program, to change construction or design details, specifications and prices without notice or without incurring any obligation.

Meyer Products Inc.
18513 Euclid Ave. • Cleveland, Ohio 44112-1084
Phone 486-1313 (Area Code 216)
email • warranty@meyerproducts.com

Diamond Equipment
6 Angell Lane • Damariscotta, ME 04543-9720
Phone 563-2227 (Area Code 207)
www.diamondplow.com • email info@diamondplow.com

Meyer
PRODUCTS LLC