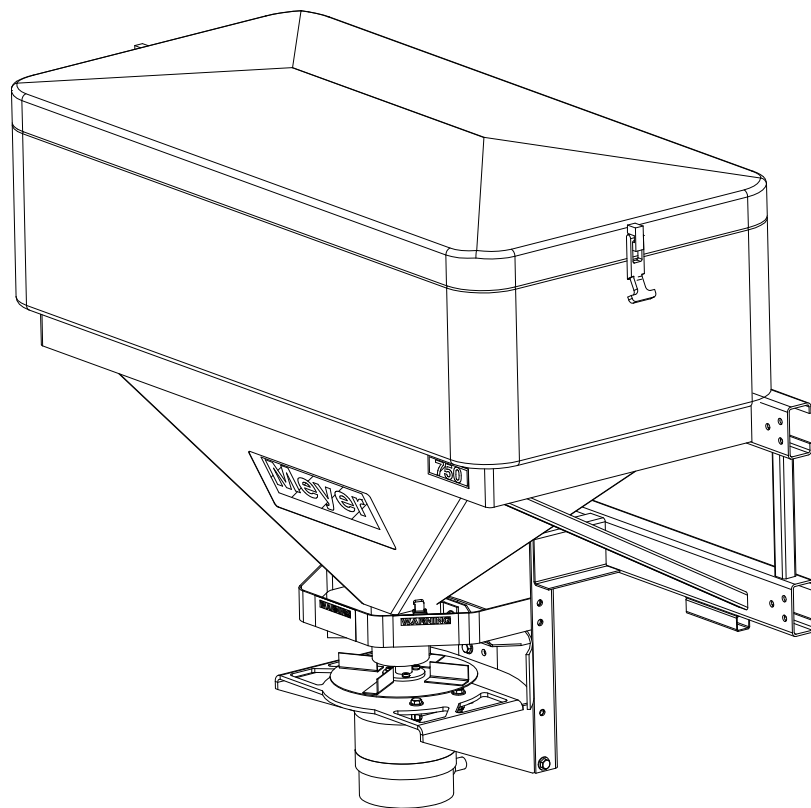


# Installation Instruction and Owners Manual BLASTER SALT/SAND SPREADERS MOUNTING SYSTEMS for Models: 750 & 750S



Meyer Products LLC reserves the right, under its continuing product improvement program, to change construction or design details, specifications and prices without notice or without incurring any obligation.

# INSTALLING HINGED MOUNT MODEL: (35500)

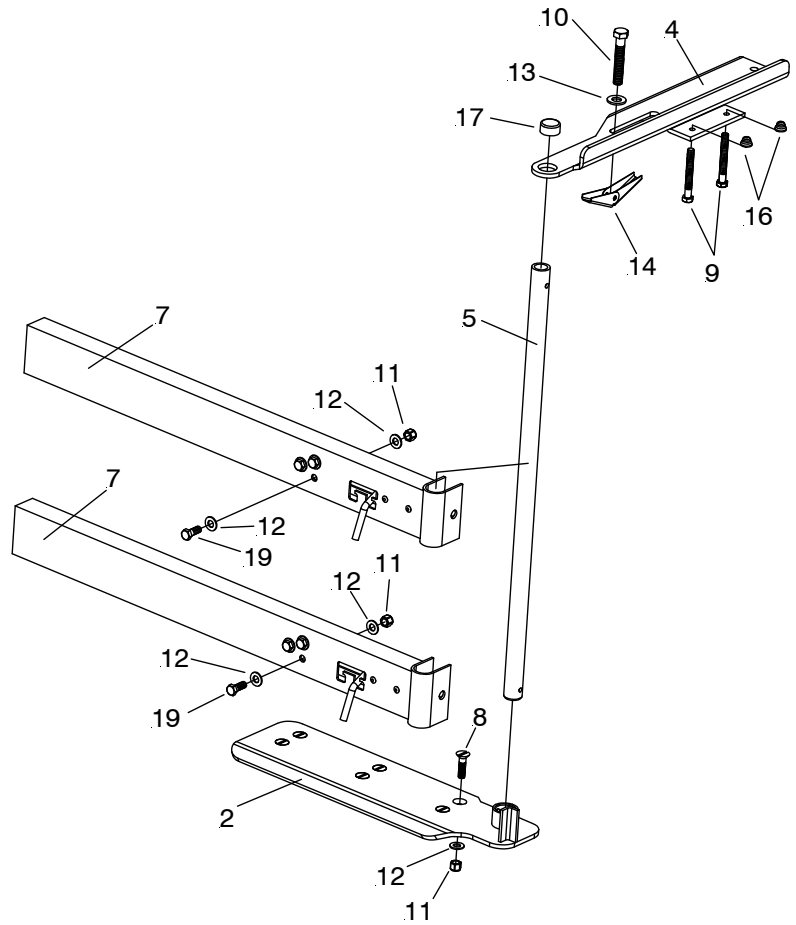
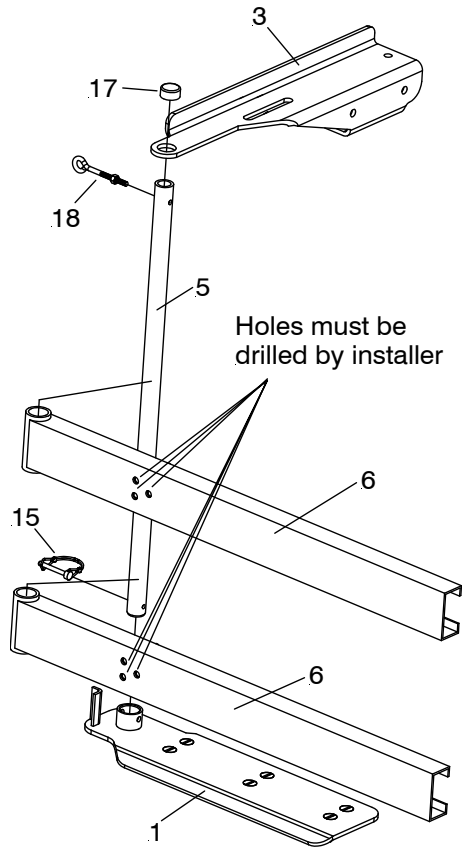
**This section covers the installation of a BLASTER 750 & 750S on a vehicle as hinged mount. CAUTION – This salt spreader is a heavy, bulky item that should be installed with assistance.**

As with any new equipment installation read and understand all instructions prior to starting the job, and do not hurry through it. A correct installation now can save time and money later.

- 1.) Using an assistant, remove the spreader unit and all loose components from the packaging and set the cover aside until installation is complete. Retain original packaging for storage purposes during the "off" season.
- 2.) Find the Driver and Passenger Side Bed Rail Brackets (3 & 4) and center along the top of each bed rail with the slot over the trucks stake pocket. Attach using 1/2-13 x 3" Bolt (11), 1/2" Flatwasher (14) and 1/2-13 Toggle Wing (2) through the slot and stake pocket. Hand tighten both sides.
- 3.) Slide the Driver and Passenger Side Bed Rail Brackets (3 & 4) out toward the back of the truck. This will assist in determining the correct distance for mounting the spreader away from the tailgate, approximately 2" of clearance.
- 4.) Place the Driver and Passenger Side Bumper Plates (1 & 2) on the bumper. Slide the Hinge Pin (5) through the bed rail bracket and into the socket on the bumper plates. Lower the tailgate to check that it will still function properly.
- 5.) Before drilling any holes double check that the Driver and Passenger Side Bumper Plates (1 & 2) are parallel and level with each other. Use a square or level to check that the Hinge Pin (5) is vertical and square to the Driver and Passenger Side Bumper Plates (1 & 2) and Driver and Passenger Side Bed Rail Brackets (3 & 4). NOTE: The driver and passenger side mounting components are mirror images of each other, and each side must be installed in exactly the same manor for the spreader to open and close properly. After everything has been checked, remove the Hinge Pins (5) and keep them handy, they will be used shortly. Tighten the toggle bolts in the Driver and Passenger Side Bed Rail Brackets (3 & 4). **Do not exceed 30 Ft. lbs. of torque.**
- 6.) If possible clamp the Driver and Passenger Side Bumper Plates (1 & 2) to the bumper and use them as guide for drilling, if that is not possible use a center punch or scribe to mark the holes. Mount the plate using 3/8-16 x 1" Screws (8), 3/8" Flatwashers (13), and 3/8-16 Locknuts (12) that are included in the swing mount hardware package.
- 7.) Install the two Hinge Channel (6) on the driver side (left) of the frame. Install the two Locking Arm Assemblies (7) on the passenger side (right). Install the Hinge Pin (5) on the passenger side and lock it in place in the bumper plate base with the 1/4" Snap Pin (16) provided. Pull back the two latches on the passenger Locking Arm Assemblies (7) to their open/locked position. With an assistant, lift the spreader upright (hopper opening face up) and set it on the newly installed bumper plates. With the assistant holding the spreader, slide the "C" channels outward from the main frame so that the Hinge Channel (6) on the driver's side line up to allow installation of the driver side Hinge Pin (5). Drop the Hinge Pin (5) through to the Driver Side Bumper Plate (1) and lock it in place with the other 1/4" Snap Pin (16). When the "U" shaped ends are placed around the passenger side Hinge Pin (5), release the spring-loaded latches to the closed position and push downward to lock. The spreader should now be supporting itself.
- 8.) Thread 3/8-16 x 3" Bolts (10) into the bottom of the driver side bed rail bracket but do not tighten. Place Bolt Tip Cover (17) on the end of each bolt. Tighten bolts firmly. NOTE: If Bolt Tip Covers (17) are not used, damage to vehicle paint may occur. Repeat this step on the passenger side.
- 9.) **Measure to ensure that the spreader is centered on the vehicle and is supported by the mounting before proceeding.** There will be 6 pre-punched holes on the latching side of the spreader frame, 3 on the on the upper "C" channel and 3 on the lower. Use these holes as a guide and drill 3/8" Dia. through the adjustable "C" channels. Install 3/8-16 x 1" Bolt (19) with 3/8" Flatwashers (12) and 3/8-16 Locknuts (11) in each hole.
- 10.) Open the passenger side latches and swing the spreader unit away from the truck to check for binding. If binding occurs it will be caused by one or both of 2 situations:
- 11.) The bolts holding down the Bumper Plates (1 & 2) are striking the frame support blocks. Remove spreader from mounting and reposition 1 bolt at a time until all are clear. New holes can be drilled if necessary.
- 12.) The Hinge Pins (5) are not properly lined up. Adjust Hinge Pins (5) one side at a time by loosening the bolts holding the Bed Rail Bracket (3 & 4) down and reposition the brackets slightly; this will in turn adjust the Hinge Pin (5).  
  
Swinging to passenger side requires removal of driver side Hinge Pin (5). **Make sure all bolts are tight.**
- 13.) Secure the cord coming from the motor to the spreader frame and lower adjustable "C" channel with wire ties. Rout the cord out to the pivot. This will take up the slack in the cord and still allow the spreader to swing. This can be changed at any time by simply routing the cord to the other side.
- 14.) The cover may now be installed and latched both sides. The spreader unit can be pivoted from either the driver or passenger side.
- 15.) **WARNING – TO AVOID DAMAGING YOUR VEHICLE, NEVER ATTEMPT TO SWING THE SPREADER WHEN LOADED WITH MATERIAL.**

NOTE: For your convenience the mounting components will not need to be taken off the vehicle to remove the salt spreader. With an assistant holding the unit remove the driver side hinge pin, open both passenger side latches and lift the spreader up and away. Replace the driver side hinge and security pins.

# HINGED MOUNT COMPONENTS (35500)

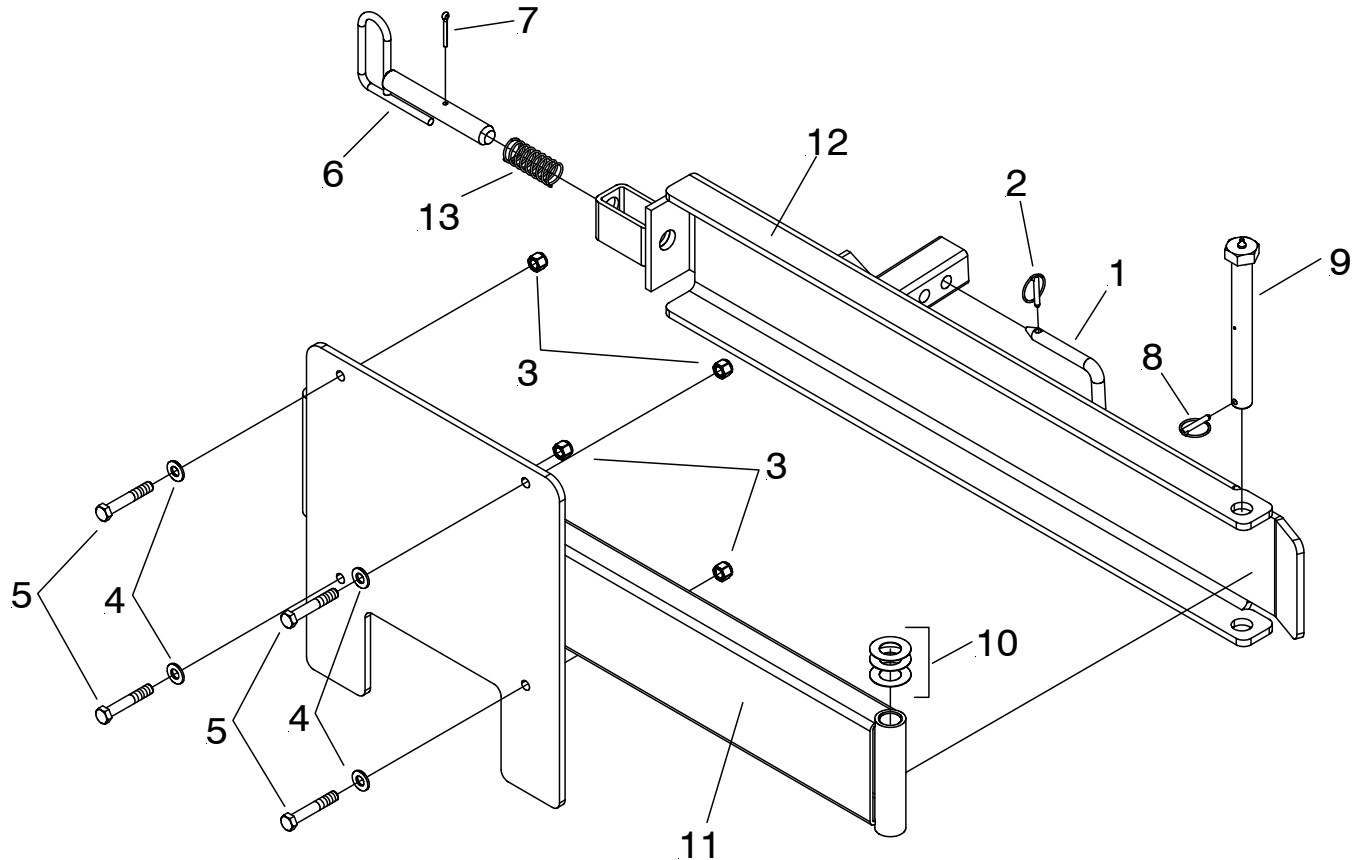


## Parts List

Item	Part No.	Qty.	Description
	35500		<b>Magnum Hinge Mount</b>
1	35505	1	• Bumper Plate DS
2	35506	1	• Bumper Plate PS
3	35502	1	• Bed Rail Bracket DS
4	35503	1	• Bed Rail Bracket PS
5	35504	2	• Hinge Pin
6	35501	2	• Hinge Channel
7	35508	2	• Locking Arm Assembly
8	22754	10	• Bolt 3/8-16 x 1-1/4" SS
9	22743	4	• Bolt 3/8-16 x 3" SS
10	22736	2	• Bolt 1/2-13 x 3" SS
11	22735	20	• Locknut 3/8-16 SS
12	22734	34	• Flawasher 3/8" SS
13	22733	2	• Flawasher 1/2" SS
14	22744	2	• Toggle Wing 1/2-13
15	22745	2	• 1/4" Snap Pin
16	22746	4	• Bolt Tip Cover
17	22747	2	• Pipe Cap
18	22748	1	• Eye Bolt W/Nut 1/4-20
19	22737	12	• Bolt 3/8-16 x 1" SS

Parts indented are included in the assembly under which they are indented.

# SWING WAY HITCH MOUNT (35100)



## Parts List

Item	Part No.	Qty.	Description
	35100		<b>Swing Away Hitch Mount</b>
	08670	1	• Pin w/Lynch Pin Kit
1	11101	2	•• Hinge Pin
2	22083	2	•• Lynch pin
	34608	1	• Hardware Bag 350/750
3	22732	8	•• Locknut 1/2-13 SS
4	22733	16	•• Flatwasher 1/2" SS
5	22736	8	•• Bolt 1/2-13 x 3" SS
	35120	1	• Swing Away Assembly
6	11859	1	•• Blue Handle Pin
7	20406	1	•• Cotter Pin 3/16 x 1-1/2"
8	22083	1	•• Lynch pin
9	22375	1	•• 1 x 8-3/4" Pivot Pin
	22957	3	•• Shim
11	35108	1	•• Swing Away Hitch
12	35109	1	•• Swing Away Hitch Pivot
13	814000005	1	•• Spring

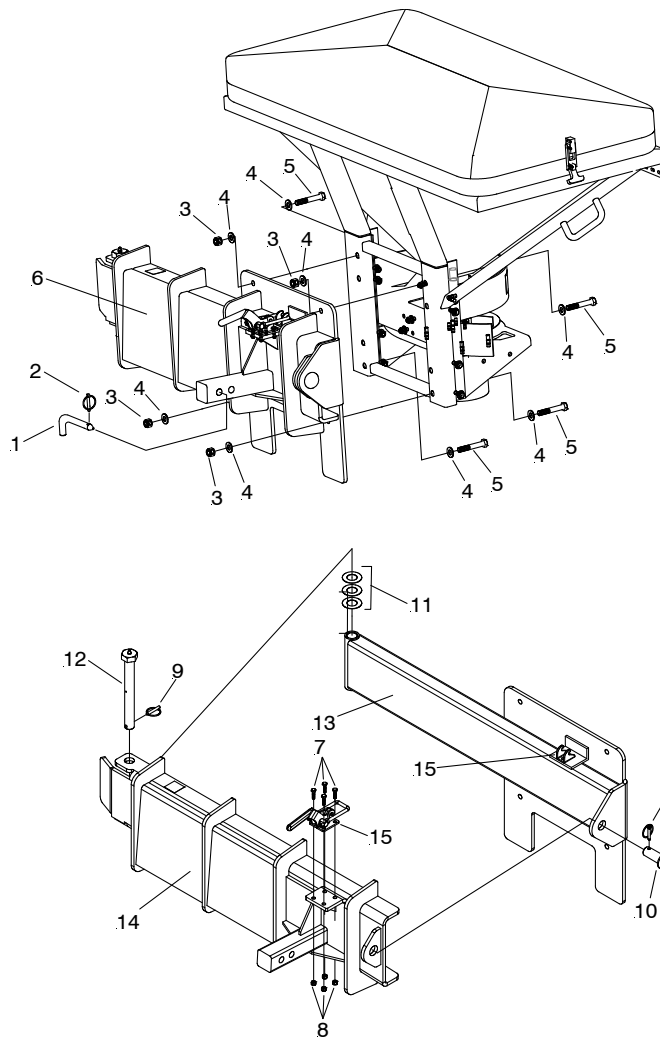
Parts indented are included in the assembly under which they are indented.

This section covers the installation of an BLASTER 350 & 750 as a Swing Away mount.

**CAUTION** – because of its bulk and weight, this salt spreader should be installed with an assistant. As with any new equipment installation, please read and understand all instructions prior to starting the job, and do not hurry through it. A correct installation now can save time and money later.

- 1.) With the help of an assistant, slide the 35120 Swing Away Assembly into the 2" rear hitch receiver and pin to receiver hitch using Hinge Pin (1) and Lynch Pin (2).
- 2.) Attach Spreader to 35120 Swing Away Assembly using 1/2-13 x 3" Bolt (5), 1/2" Flatwashers (4) and 1/2-13 Locknut (3).

# SWING WAY HITCH MOUNT (35160)



## Parts List

Item	Part No.	Qty.	Description
	35160		<b>Swing Away Hitch Mount</b>
	08670	1	• Pin w/Lynch Pin Kit
1	11101	2	•• Hinge Pin
2	22083	2	•• Lynch pin
	34608	1	• Hardware Bag 350/750
3	22732	8	•• Locknut 1/2-13 SS
4	22733	16	•• Flatwasher 1/2" SS
5	22736	8	•• Bolt 1/2-13 x 3" SS
6	35140	1	• Swing Away Assembly
7	20005	4	•• Bolt H 1/4-20 x 1" Gr. 5
8	20303	4	•• Locknut 1/4-20
9	22083	2	•• Lynch pin
10	22438	1	•• Pin 1 x 2-1/2
11	22957	3	•• Shim
12	22375	1	•• 1 x 8-3/4" Pivot Pin
13	35130	1	•• Swing Away Hitch Pivot
14	35135	1	•• Swing Away Hitch
15	38295	1	•• Swing Away Pull Clamp

Parts indented are included in the assembly under which they are indented.

This section covers the installation of an BLASTER 350 & 750 as a Swing Away mount.

**CAUTION** – because of its bulk and weight, this salt spreader should be installed with an assistant. As with any new equipment installation, please read and understand all instructions prior to starting the job, and do not hurry through it. A correct installation now can save time and money later.

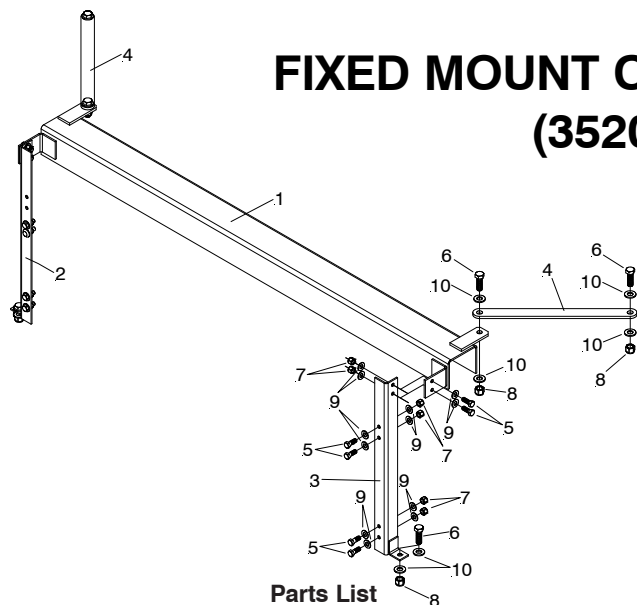
- 1.) With the help of an assistant, slide the 35140 Swing Away Assembly into the 2" rear hitch receiver and pin to receiver hitch using Hinge Pin (1) and Lynch Pin (2).
- 2.) Attach Spreader to 35140 Swing Away Assembly using 1/2-13 x 3" Bolt (5), 1/2" Flatwashers (4) and 1/2-13 Locknut (3).

# INSTALLING FIXED MOUNT MODEL: (35200)

This section covers the installation of an BLASTER 750 & 750S as a fixed mount.

**CAUTION** – because of its bulk and weight, this salt spreader should be installed with an assistant. As with any new equipment installation, please read and understand all instructions prior to starting the job, and do not hurry through it. A correct installation now can save time and money later.

- 1.) With the help of an assistant, remove the spreader unit and all loose components from the packaging and set the cover aside until installation is complete. Retain original packaging for storage.
- 2.) Bolt the DS & PS Upright Weldments (2 & 3) to the spreader frame using (4) 3/8-16 x 1" Bolts (5) with 3/8" Flatwashers (9) and 3/16 Locknuts (7).
- 3.) Place the Tailgate Bracket (1) over the tailgate, centered with the brackets pointed away from the truck as shown below.
- 4.) Set the spreader with attached DS & PS Upright Weldments (1 & 2) on the bumper and center it with respect to the tailgate. After setting the spreader in place, the DS & PS Upright Weldments (1 & 2) should fall between the brackets welded to the Tailgate Bracket. Using a "C" clamp or vise grip pliers, clamp the DS & PS Upright Weldments (1 & 2) to the Tailgate Bracket (1) weldment brackets.
- 5.) Check that the unit is level and centered on the truck.
- 6.) The Tailgate Bracket (1) weldment brackets will have 2 holes in each, use these holes as a guide and drill a 3/8" hole through the DS & PS Upright Weldments (1 & 2). Be sure to place a 3/8-16 x 1" Bolt (5) with 3/8" Flatwashers (9) and 3/8-16 Locknuts (7) in each hole before removing clamps.
- 7.) Again, check to see that the unit is centered on the truck. Bolt both Stiffener brackets (4) to the Tailgate Bracket (1) using a 1/2-13 x 1-1/2" Bolt (6) with 1/2" Flatwashers (10) and 1/2-13 Locknuts (8) for each side. Do not tighten these bolts yet.
- 8.) Swing Stiffener brackets (4) until pre-punched hole is centered with top of bed rail. Use the Stiffener bracket (4) as a guide and drill 1/2" Dia. hole through the bed rail on both sides. Use a 1/2-13 x 1-1/2 Bolt (6) with 1/2" Flatwashers (10) and 1/2-13 Locknut (8) on each side. Tighten all bolts.
- 9.) Use the bottom of the DS & PS Upright Weldments (2 & 3) as a guide for drilling into the bumper. Drill a 3/8" Dia. hole through the bumper and fasten with a 1/2-13 x 1-1/4" Bolt (6) 1/2" Flatwashers (10) and 1/2-13 Locknut (8) on each side.
- 10.) Double check that all nuts and bolts are tight.
- 11.) Install cover and latch both sides.



## FIXED MOUNT COMPONENTS (35200)

### Parts List

Item	Part No.	Qty.	Description
	35200		<b>Blaster Fixed Mount</b>
1	35207	1	• Tailgate Bracket
2	35205	1	• DS Upright Weldment
3	35202	1	• PS Upright Weldment
4	35201	2	• Stiffener
	35211	1	• Hardware Bag
5	22737	12	•• Bolt 3/8-16 x 1" SS
6	22742	6	•• Bolt 1/2-13 x 1-1/2" SS
7	22735	4	•• Locknut 3/8-16 SS
8	22732	6	•• Locknut 1/2-13 SS
9	22734	16	•• Flawasher 3/8" SS
10	22733	12	•• Flawasher 1/2" SS

Parts indented are included in the assembly under which they are indented.

# ASSEMBLY INSTRUCTIONS FOR DUMP BED MOUNTING (35300)

Note: This mounting is designed to support a BLASTER 750 & 750S spreader when mounted to a 2 or 3 yard dump truck with a tailgate.

- 1.) Start by placing the spreader on the ground face down, locate the PS & DS Upright Weldment (2 & 3) and eight 3/8"-16 x 1-1/4" Bolts (5), sixteen 3/8" Flatwashers (10) and eight 3/8-16 Locknuts (8). The PS & DS Upright Weldment (2 & 3) come with a series of pre-drilled holes these are to allow for flexibility in the height of the spreader when mounted and the adjustability of the Lower Supports (4). Place the PS & DS Upright Weldment (2 & 3) onto into the spreader frame making sure that the same pattern of mounting holes is used for each side. Bolt the PS & DS Upright Weldment (2 & 3) to each side.
- 2.) Using two 1/2"-13 x 1-1/2" Bolts (6), four 1/2" Flatwashers (11), and two 1/2-13 Locknuts (9), attach Channel Weldment (1) to one of the PS & DS Upright Weldment (2 & 3) so that the channels are rearward of the spreader framework. Repeat this step on the other side. Fully tighten all bolts.
- 3.) With assistance from another person, lift the entire spreader and mounting frame assembly and place centered onto vehicle. The Chennel Weldment should seat fully down onto the tailgate. Thread four 1/2"-13 x 3" Bolts (7) into each tailgate Channel Weldment (1) and tighten evenly until all slack is removed. Once again, go through and fully tighten all bolts to provide a good gripping action on the tailgate.
- 4.) The Lower Supports (4) provided with this kit have several long slots. These are to allow for adjustment when installing. First examine the rearward portion of the vehicle frame for existing hole that may be used. If there are no holes present new ones will have to be drilled. Loosely attach the Lower Supports (1) to the lower portion of the PS & DS Upright Weldment (2 & 3) using two 1/2"-13 x 1-1/2" Bolts (6), four 1/2" Flatwashers, and two 1/2-13 Locknuts (9) for each side. Align the Lower Support (1) to the hole or holes in the vehicle frame and attach with two 1/2"-13 x 1-1/2" Bolts (6), four 1/2" Flatwashers, and two 1/2-13 Locknuts (9) for each side.

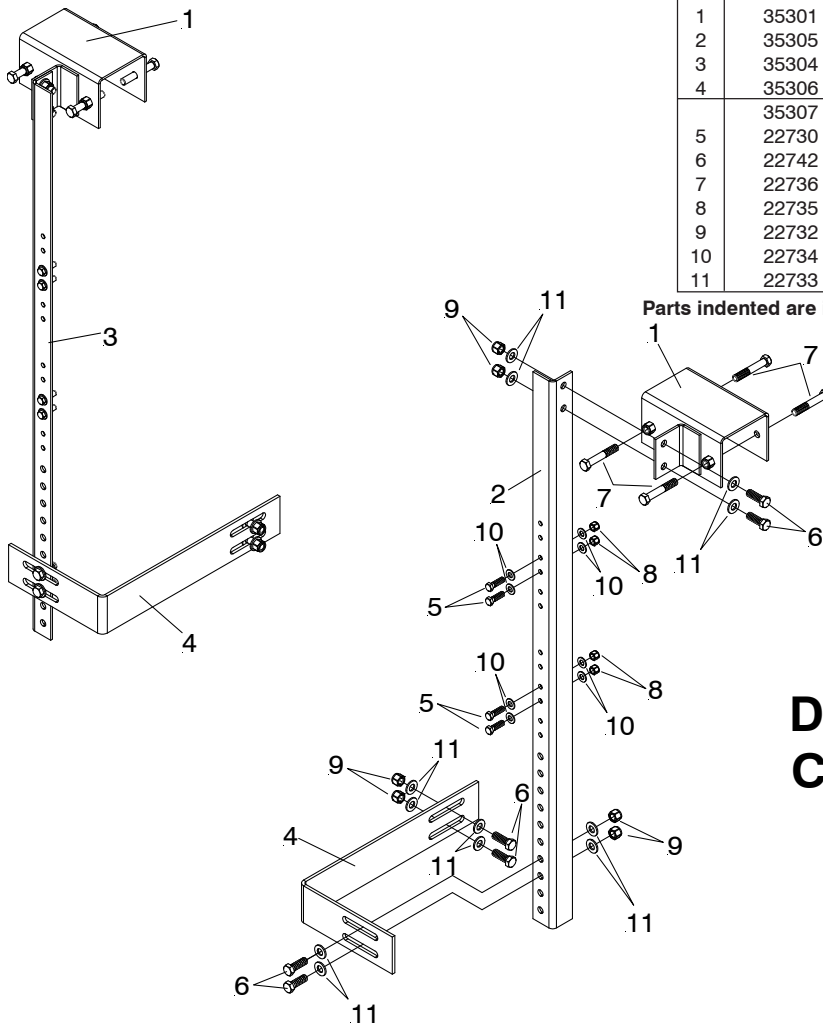
Double check that the spreader is sitting level and square, and that all fasteners have been sufficiently tightened. Plug the spreader into the wire harness and the unit is ready to be used.

**WARNING:** Do not raise the dump with the spreader or any of the mounting components attached.

## Parts List

Item	Part No.	Qty.	Description
	35300		<b>Blaster Dump Body Mount</b>
1	35301	2	• Channel Weldment
2	35305	1	• PS Upright Weldment
3	35304	1	• DS Upright Weldment
4	35306	2	• Lower Support
	35307	1	• Hardware Bag
5	22730	8	•• Bolt 3/8-16 x 1-1/4" SS
6	22742	12	•• Bolt 1/2-13 x 1-1/2" SS
7	22736	8	•• Bolt 1/2-13 x 3" SS
8	22735	8	•• Locknut 3/8-16 SS
9	22732	12	•• Locknut 1/2-13 SS
10	22734	16	•• Flawasher 3/8" SS
11	22733	24	•• Flawasher 1/2" SS

Parts indented are included in the assembly under which they are indented.



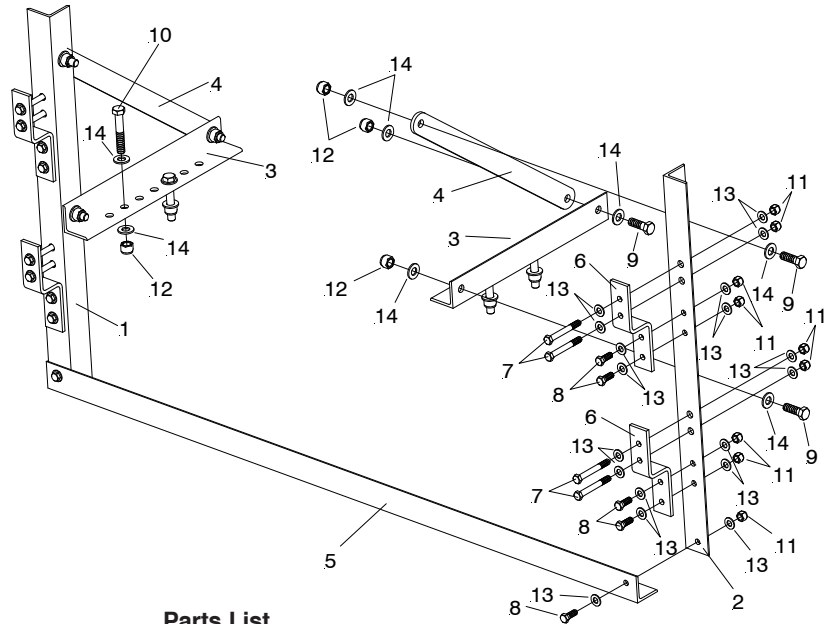
## DUMP BED MOUNTING COMPONENTS (35300)

# ASSEMBLY INSTRUCTIONS FOR FLATBED MOUNTING (35400)

Note: This mounting is designed for use with the BLASTER 750 & 750S spreaders, when used with a flat bed vehicle.

- 1.) Begin the assembly by attaching the four Hooks (6) DS & PS Upright Weldments (1 & 2). This is accomplished by using two 3/8"-16 x 1-1/4" Bolts (8) with four 3/8" Flatwashers (13) and two 3/8-16 Locknuts (11) for each hook. Attach two Hooks (6) to each DS & PS Upright Weldments (1 & 2) as shown. Tighten all bolts fully, and make sure the extra bolt hole in the hook face of the vertical support is downward of the hooks as shown, this will be used later.
- 2.) Bolt one Lower Support (3) to each DS & PS Upright Weldments (1 & 2) with Hooks (6) that was assembled in the first step. Use one 1/2"-13 x 1-1/2" Bolt (9), two 1/2" Flatwashers (14), and one 1/2-13 Locknut (12) on the hole closest to the center of the DS & PS Upright Weldments (1 & 2).
- 3.) Locate the Brace (4) and bolt between the DS & PS Upright Weldments (1 & 2) (use highest hole) and Lower Support (3). Use two 1/2"-13 x 1-1/2" Bolt (9), four 1/2" Flatwashers (14), and two 1/2-13 Locknut (12). Check that the DS & PS Upright Weldments (1 & 2) is perpendicular to the Lower Support (3) and that all bolts are tight.
- 4.) Use the Spreader Bar (5) to attach the two triangulated assemblies that were built in steps 1-3 together. Use two 3/8"-16 x 1-1/4" Bolts (8) with four 3/8" Flatwashers (13) and two 3/8-16 Locknuts (11). This part is bolted to the lowest holes in the DS & PS Upright Weldments (1 & 2). Do not fully tighten units until later.
- 5.) Place the mounting into the spreader and align all bolt holes. Fully tighten the Spreader Bar (5) bolts and remove the mounting from the spreader.
- 6.) The mounting can now be bolted to the vehicle. The mounting will come with several pre-drilled holes in the Lower Supports (3) use these as drilling guides. There will need to be four 1/2" holes drilled through the bed so check for any obstructions on the other side before drilling. When possible try to spread the bolt pattern out as far as possible, this will provide the strongest mounting. Use four 1/2"-13 x 3" Bolts (10) with eight 1/2" Flatwashers (14) and four 1/2-13 Locknuts (12).
- 7.) With the help of an assistant place the spreader into the mounting hooks and bolt the spreader to the mount. Use eight 3/8"-16 x 3" Bolts (7) with sixteen 3/8" Flatwashers (13) and eight 3/8-16 Locknuts (11).

## FLATBED MOUNTING COMPONENTS (35400)



### Parts List

Item	Part No.	Qty.	Description
	35400		<b>Blaster Flatbed Mount</b>
1	35405	1	• DS Upright Weldment
2	35404	1	• PS Upright Weldment
3	35403	2	• Lower Support
4	35401	2	• Brace
5	35402	1	• Spreader Bar
6	35406	4	• Hook
	35407	1	• Hardware Bag
7	22743	6	• Bolt 3/8-16 x 3" SS
8	22730	10	• Bolt 3/8-16 x 1-1/4" SS
9	22742	8	• Bolt 1/2-13 x 1-1/2" SS
10	22736	4	• Bolt 1/2-13 x 3" SS
11	22735	18	• Locknut 3/8-16 SS
12	22732	10	• Locknut 1/2-13 SS
13	22734	36	• Flatwasher 3/8" SS
14	22733	20	• Flatwasher 1/2" SS

Parts indented are included in the assembly under which they are indented.