



**Fisher Engineering**

P.O. Box 529 Rockland, Maine 04841

April 30, 1999

No. 6449

# Minute Mount<sup>®</sup>

SYSTEM

## Attachment Kit

### Dodge

**W150** 1972-88

**W150** 1992-93

**W250 & W350** 1972-93

**Ramcharger** 1974-93

### ⚠ CAUTION

See your FISHER<sup>®</sup> outlet for application recommendations. The Kit Selection Guide has specific vehicle and snowplow requirements.

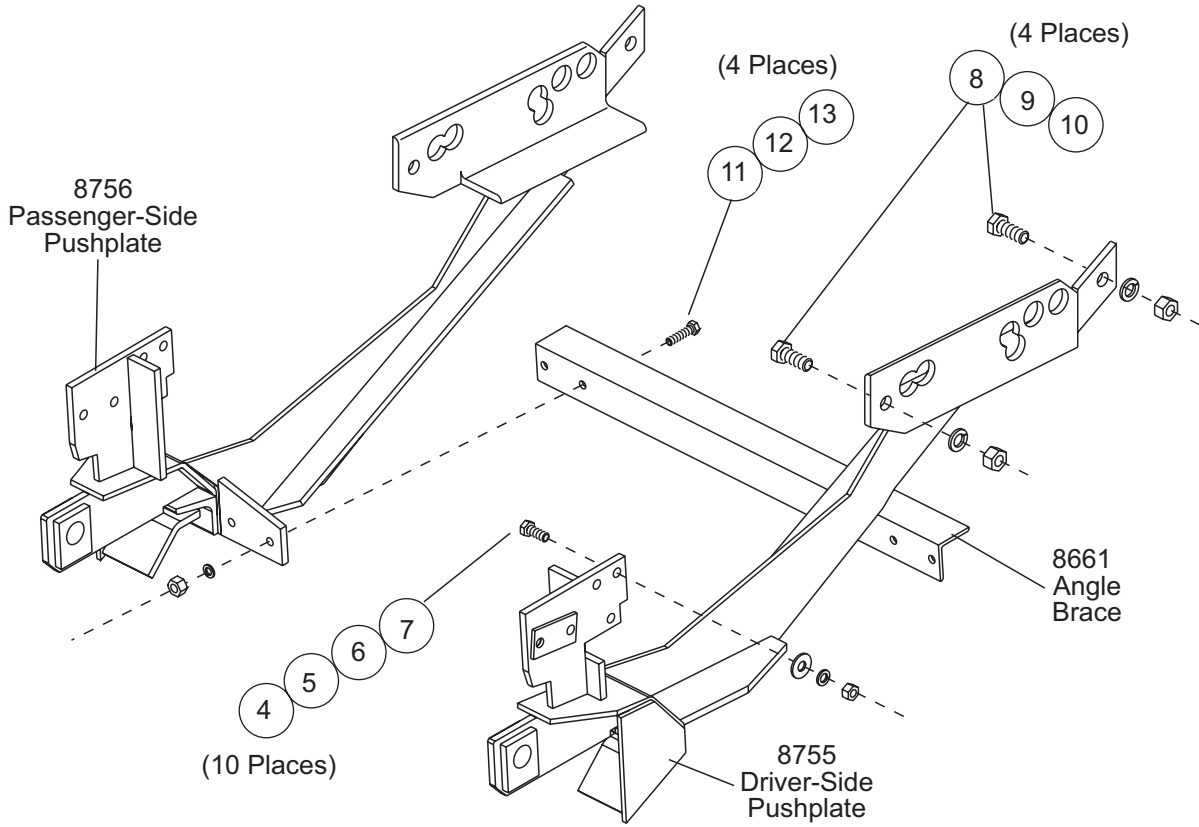
## Table Of Contents

Attachment Kit Assembly .....	2
Bolt Bag Parts List .....	2
Safety Information .....	3
Installation Instructions .....	3

### 7124 KIT PARTS LIST

7124 Attachment Kit					
Part #	Qty Req	Description	Part #	Qty Req	Description
8755	1	Driver-Side Pushplate	8661	1	Angel Brace
8756	1	Passenger-Side Pushplate	8762	1	Bolt Bag-7124

PARTS LIST AND DIAGRAM



8762 Bolt Bag							
Ref #	Part #	Qty	Description	Ref #	Part #	Qty	Description
4	90177	10	7/16 x 1-1/2" Gr. 5 Cap Screws	10	90343	4	5/8" Nut
5	90317	10	7/16" Flat Washers	11	90103	4	3/8 x 1" Gr. 5 Cap Screws
6	90362	10	7/16" Lock Washers	12	90361	4	3/8" Lock Washers
7	90335	10	7/16" Nut	13	90334	4	3/8" Nut
8	90244	4	5/8 x 1-1/2" Gr. 5 Cap Screws	14	7274	1	5/16 x 12" Chain (not shown)
9	90366	4	5/8" Lock Washers	15	7275	1	Chain Connecting Link (not shown)

## SAFETY INFORMATION

### ⚠ WARNING

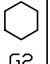


Indicates a potentially hazardous situation that, if not avoided, could result in death or serious personal injury.

### ⚠ CAUTION

Indicates a situation that, if not avoided, could result in minor personal injury and/or damage to product or property.

**NOTE:** Identifies tips, helpful hints and maintenance information the owner/operator should know.

Torque all fasteners according to the torque chart. For proper fit, do not tighten fasteners until instructed to do so.

NC FASTENER TORQUE (FT-LB)			
DIAMETER- THREADS PER INCH	GRADE		
			
	G2	G5	G8
1/4 - 20	6	9	13
5/16 - 18	11	18	28
3/8 - 16	19	31	46
7/16 - 14	30	50	75
1/2 - 13	45	75	115
9/16 - 12	66	110	165
5/8 - 11	93	150	225
3/4 - 10	150	250	370
7/8 - 9	150	378	591
1 - 8	220	583	893

## INSTALLATION INSTRUCTIONS

**NOTE:** To insure proper fit of attachments and alignment of "connecting pin arms," do not fully tighten any fasteners until instructed to do so.

1. On the driver-side, remove and discard three 7/16" bolts from front bumper bracket to frame.

**For vehicles with diesel engines:** Remove the two 7/16" fasteners holding the channel bumper bracket stiffener to the bumper bracket. Remove and discard the stiffener and bolts.

Install driver-side pushplate over sway bar, if equipped, placing rear angle on pushplate under and outside of vehicle frame and inside of spring with front tab on inside of frame. Line up front hole of angle on pushplate and hole in frame. Install one 5/8" x 1-1/2" cap screw, through frame and pushplate angle and fasten with 5/8" lock washer and nut. **Do not fully tighten fasteners at this time.**

Raise front of pushplate and install five 7/16" x 1-1/2" cap screws through hanger plate, frame and bumper bracket. Fasten with five 7/16" flat washers, lock washer and nuts. **Do not tighten fasteners. Note: Reuse vehicle 7/16" nuts as necessary.**

2. Repeat same on passenger-side pushplate.
3. Install angle brace on back of pushplate tabs with angle leg on top. Fasten with four 3/8" x 1" Gr. 5 cap screws, lock washers and nuts.
4. Tighten cap screws on cross bar angle. Place jack under cross bar to hold pushplate up against the frame. Check the center-to-center distance between the connecting pin arms on the pushplates. It should be 29-1/8". To ensure that the arms are parallel, a second measurement must be taken further back on the arms. This measurement should be the same. **Tighten remaining fasteners.**
5. Check inside the frame for interference on rear angle of pushplate. Drill one 11/16" hole in frame for each pushplate using rear tab of angle on pushplate as a guide. Fasten with one 5/8" x 1-1/2" Gr. 5 cap screw, lock washer and nut. **Tighten.**
6. An extra length of lift chain and connecting link are supplied with this kit to be used, if necessary, to provide for sufficient blade travel when Electric Hydraulic Pak kits are used.

Copyright © 1999 Douglas Dynamics, L.L.C. All rights reserved. This material may not be reproduced or copied, in whole or in part, in any printed, mechanical, electronic, film or other distribution and storage media, without the written consent of Fisher Engineering. Authorization to photocopy items for internal or personal use by Fisher Engineering outlets is granted.

Fisher Engineering reserves the right under its product improvement policy to change construction or design details and furnish equipment when so altered without reference to illustrations or specifications used herein. Fisher Engineering and the vehicle manufacturer may require and/or recommend optional equipment for snow removal. Fisher Engineering offers a limited warranty for all snowplows and accessories. See separately printed page for this important information. The following are registered (®) and unregistered (™) trademarks of Douglas Dynamics, L.L.C.: FISHER®, Minute Mount®

**Printed in USA**