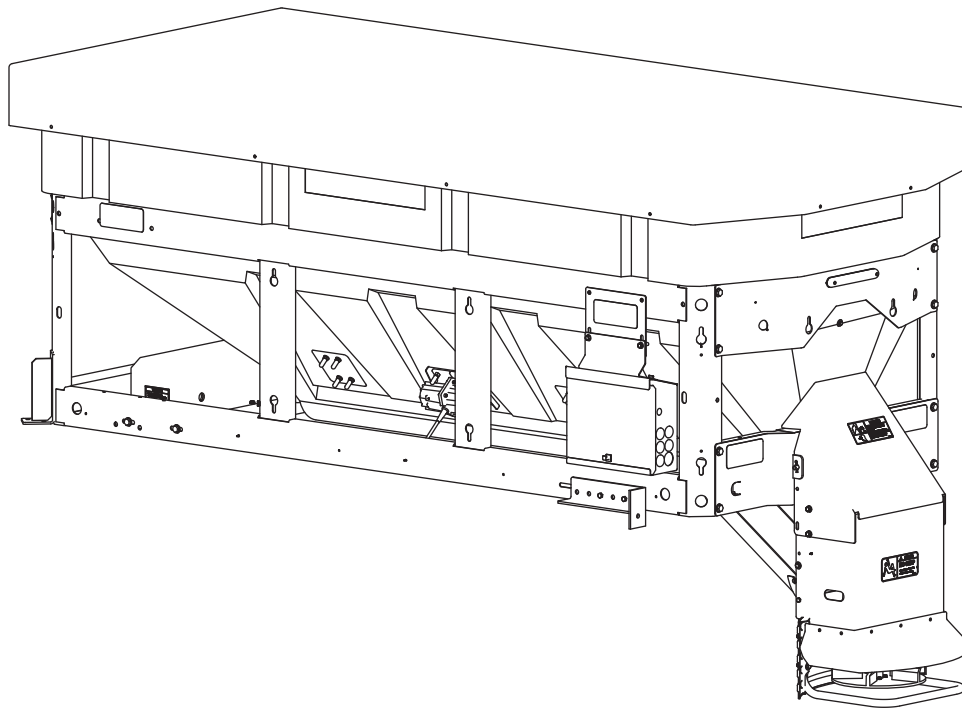




# V-Maxx™ G2 Hopper Spreader

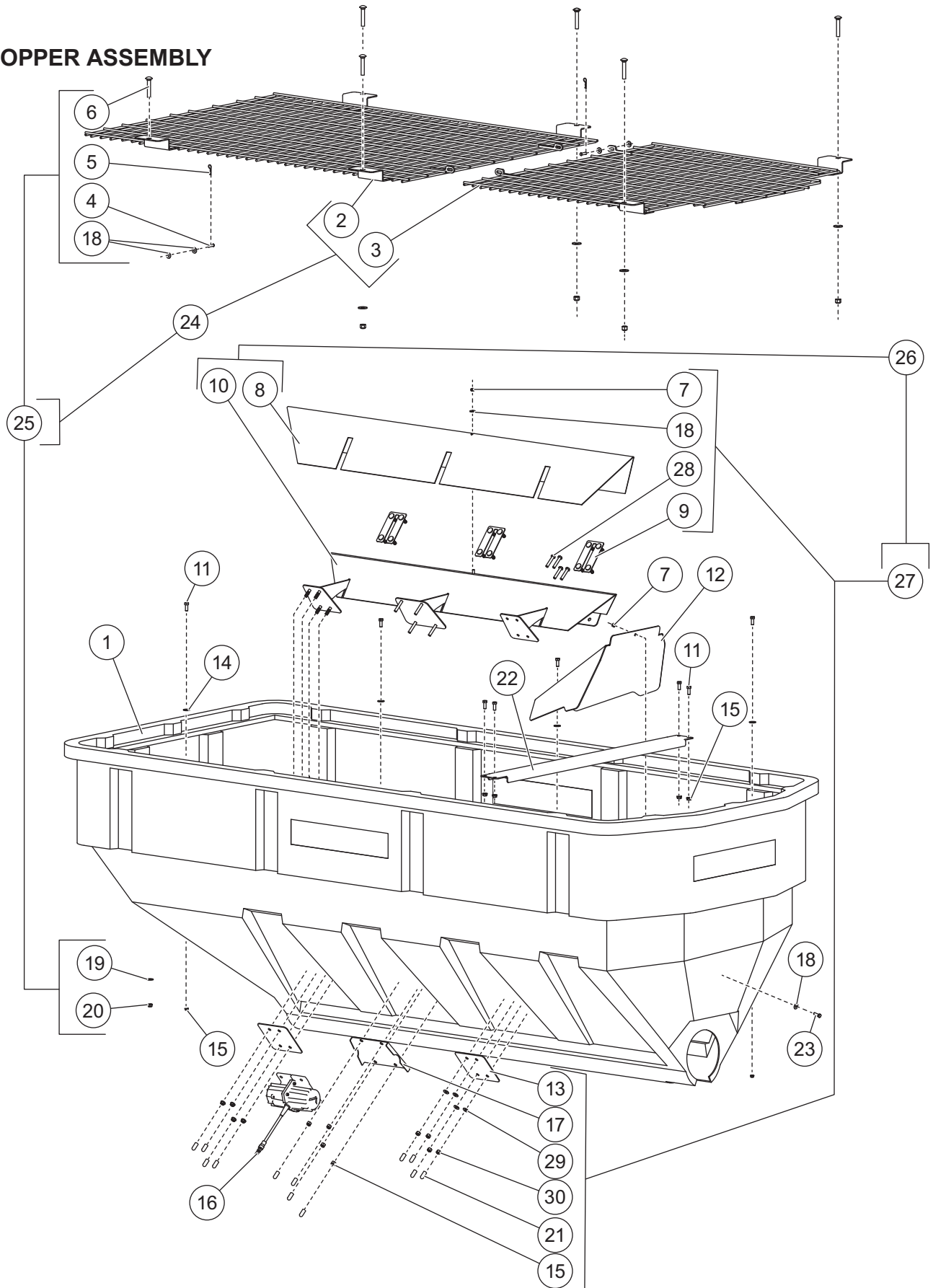
VX-4200

Parts List

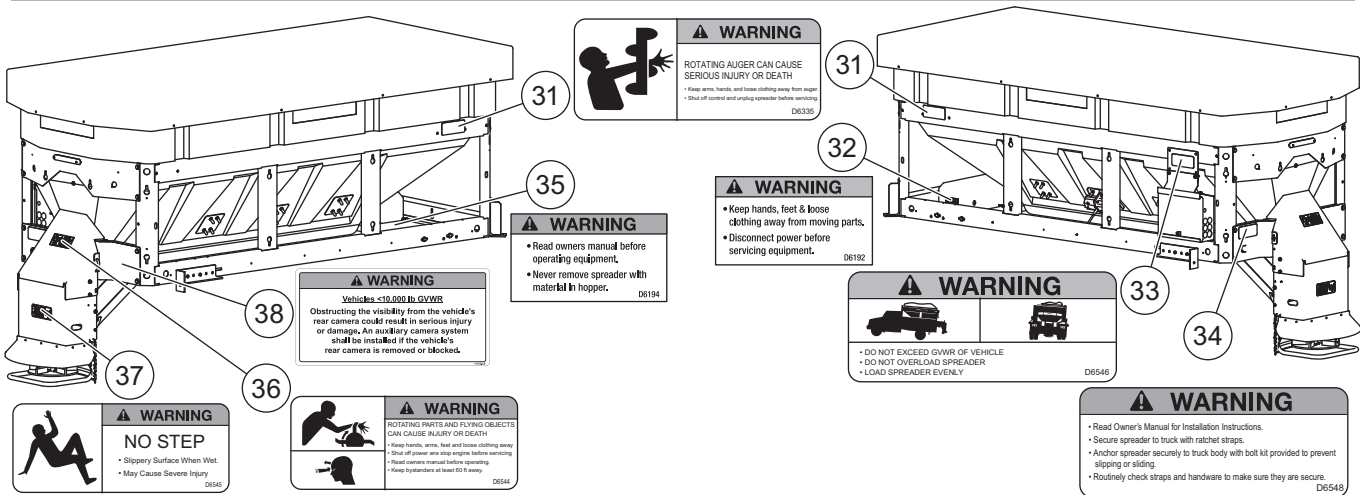


# VX-4200 V-Maxx™ G2 HOPPER SPREADER

## HOPPER ASSEMBLY



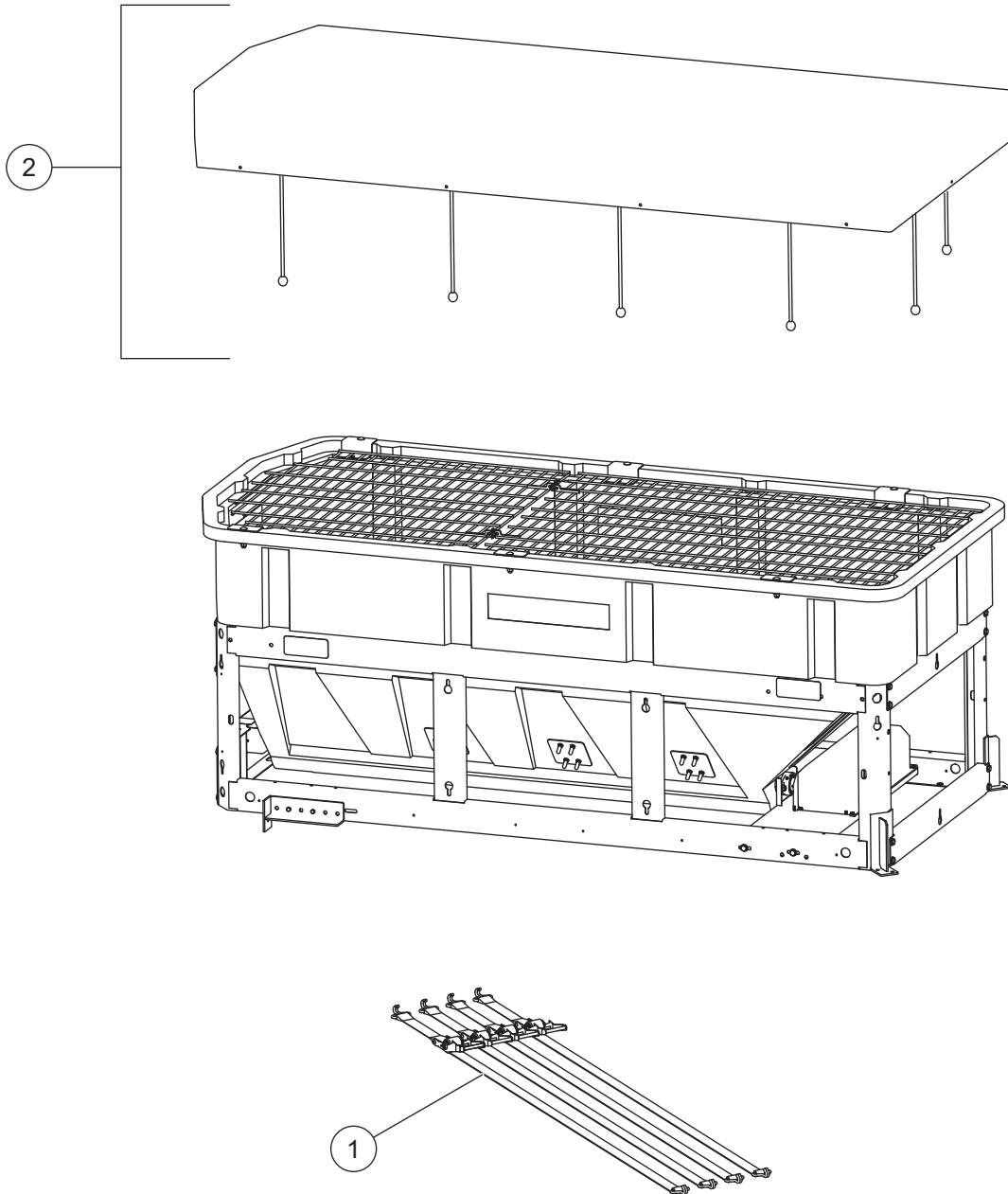
# VX-4200 V-Maxx™ G2 HOPPER SPREADER



Item	Part	Qty	Description	Item	Part	Qty	Description
1	D6886	1	Hopper	21	T30820	24	3/8 x 1 Stud Cover
2	D6890	1	Top Screen Front Section	22	D6898	1	Cross Bar
3	D6892	1	Top Screen Rear Section	23	D6166	1	5/16-18 x 1 Hex Cap Screw
4	D6866	2	5/16 x 1-1/4 Clevis Pin	24	96606	1	Top Screen Service Kit
5	D6853	2	Hairpin Cotter	25	96607	1	Top Screen Mounting Hardware
6	F51284	6	1/2-13 x 3 Carriage Bolt	26	96608	1	Inverted V Service Kit
7	D6138	2	5/16-18 Locknut	27	96605	1	Inverted V Mounting Hardware
8	D6889	1	Inverted V Salt Baffle	28	F50547	4	3/8-16 x 2 Hex Cap Screw SS
9	D6815	3	Bolt Plate, 4-Bolt	29	D6169	4	3/8 Flat Washer SS
10	D6888	1	Inverted V Assembly	30	T30728	4	3/8-16 Locknut SS
11	D4121	4	3/8-16 x 1 Hex Cap Screw	31	D6335	2	Label – Warning, Rotating Auger
12	D6869	1	Salt Discharge Baffle	32	D6192	1	Label – Warning, Hands and Feet
13	D5508	5	Inverted V Backing Plate	33	D6546	1	Label – Warning, Do Not Overload
14	D4125	4	3/8 Flat Washer	34	D6548	1	Label – Warning, Owner's Manual
15	D6584	24	3/8-16 Serrated Flange Locknut	35	D6194	1	Label – Warning, Before Operating
16	51068	1	Heavy Duty Vibrator, DC-200	36	D6544	1	Label – Warning, Rotating Parts
17	D6860	1	Vibrator Backing Plate	37	D6545	1	Label – Warning, No Step
18	D6165	6	5/16 Flat Washer SS	38	11100	1	Label – Warning, Rear Camera
19	D4119	6	1/2 Flat Washer	ns	83691	2	Label – SnowEx® V-Maxx G2
20	D4120	6	1/2 Locknut				
<b>Item 24 96606 Top Screen Service Kit</b>							
2	D6890	1	Top Screen Front Section	25	96609	1	Top Screen Mounting Hardware
3	D6892	1	Top Screen Rear Section				
<b>Item 25 96607 Top Screen Mounting Hardware</b>							
4	D6866	2	5/16 x 1-1/4 Clevis Pin	18	D6165	4	5/16 Flat Washer SS
5	D6853	2	Hairpin Cotter	19	D4119	6	1/2 Flat Washer
6	F51284	6	1/2-13 x 3 Carriage Bolt	20	D4120	6	1/2 Locknut
<b>Item 26 96608 Inverted V Service Kit</b>							
8	D6889	1	Inverted V Salt Baffle	27	96605	1	Inverted V Mounting Hardware
10	D6888	1	Inverted V Assembly				
<b>Item 27 96605 Inverted V Mounting Hardware</b>							
7	D6138	1	5/16-18 Locknut	18	D6165	1	5/16 Flat Washer SS
9	D6815	3	Bolt Plate, 4-Bolt	21	T30820	24	3/8 x 1 Stud Cover
13	D5508	5	Inverted V Backing Plate	28	F50547	4	3/8-16 x 2 Hex Cap Screw SS
15	D6584	20	3/8-16 Serrated Flange Locknut	29	D6169	4	3/8 Flat Washer SS
17	D6860	1	Vibrator Backing Plate	30	T30728	4	3/8-16 Locknut SS
ns = not shown				SS = Stainless Steel			

# VX-4200 V-Maxx™ G2 HOPPER SPREADER

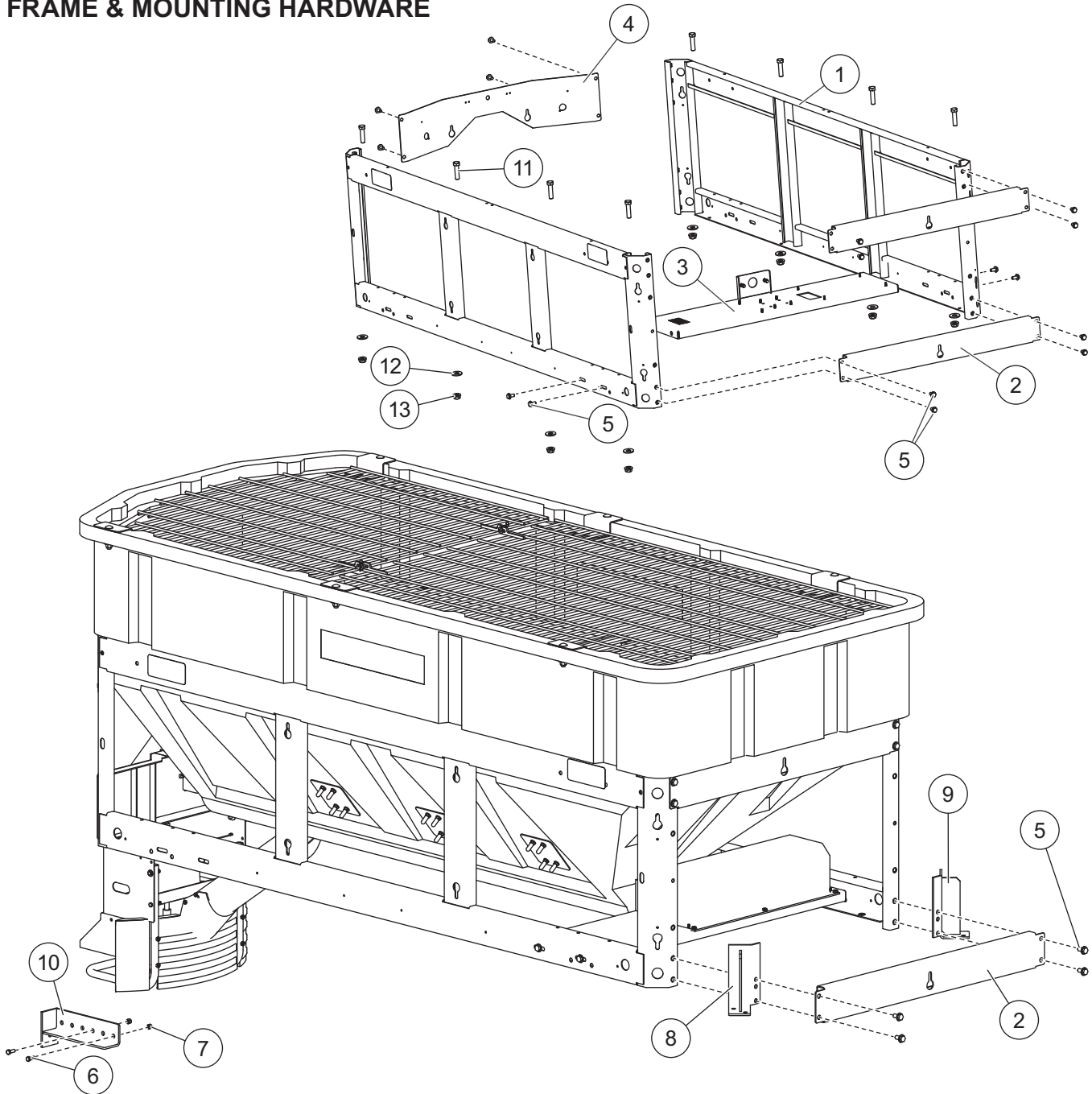
## RATCHET STRAPS & COVER



Ratchet Straps and Cover						
Item	Part	Qty	Description	Item	Part	Qty Description
1	D6856	1	Ratchet Strap, pkg of 4	2	D6883	1 Tarp Kit

# VX-4200 V-Maxx™ G2 HOPPER SPREADER

## FRAME & MOUNTING HARDWARE



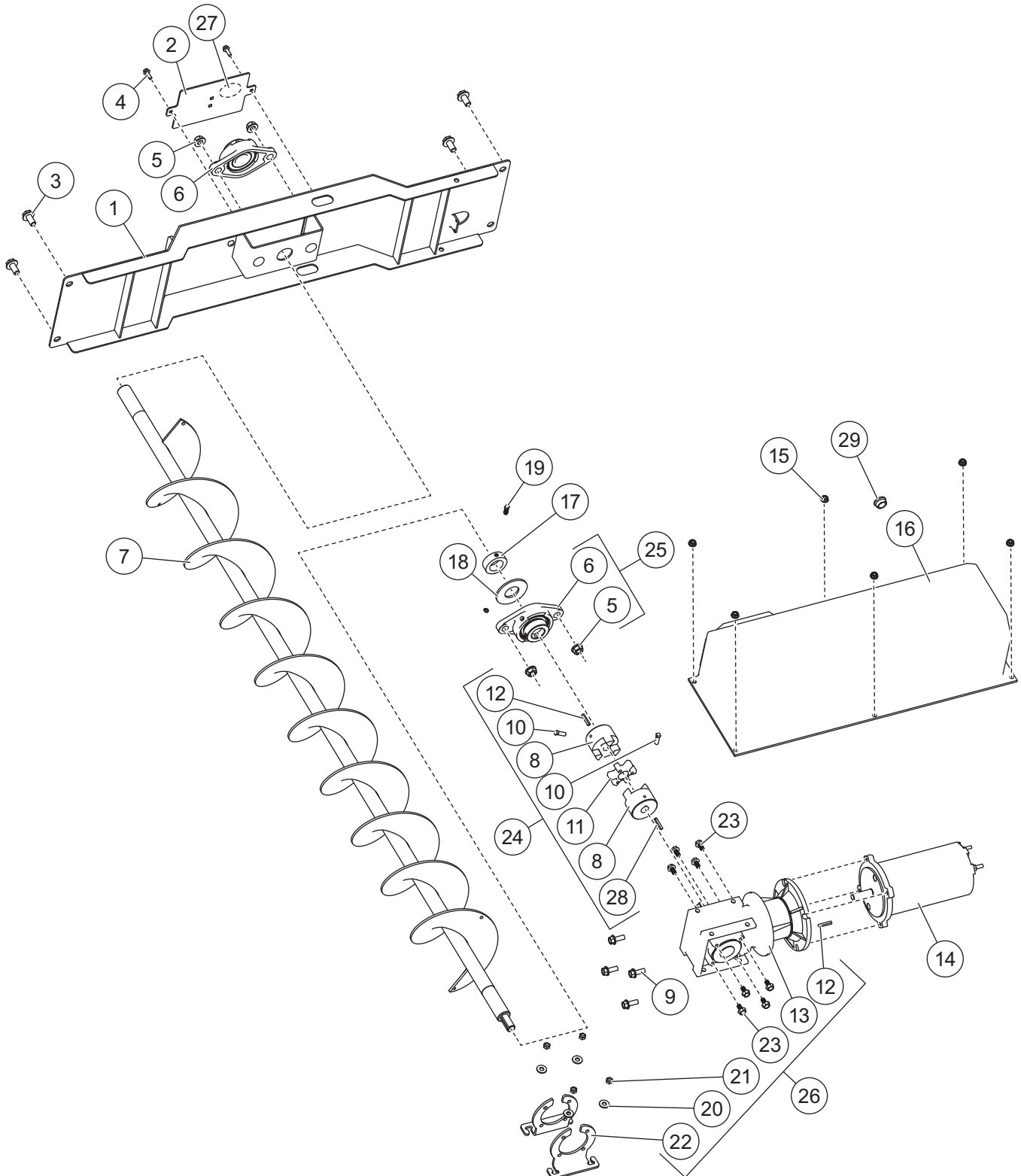
**Frame and Mounting Hardware**

Item	Part	Qty	Description	Item	Part	Qty	Description
1	D6879-1	2	Side Frame	8	D6759	1	Left Front Stop Bracket
2	D6882	2	Upper/Lower Front Rail	9	D6760	1	Right Front Stop Bracket
3	D6884	1	Auger Motor/Transmission Support	10	D6756	1	Right Stop Bracket
4	D6880-1	1	Rear Apron	ns	D6755	1	Left Stop Bracket
5	D6528	16	1/2-13 x 1 Serrated Hex Cap Screw	11	D4116	8	1/2-13 x 1-1/2 Hex Cap Screw
6	D4121	4	3/8-16 x 1 Hex Cap Screw	12	D4119	8	1/2 Flat Washer
7	D4124	4	3/8 Locknut	13	D4120	8	1/2-13 Locknut

ns = not shown

# VX-4200 V-Maxx™ G2 HOPPER SPREADER

## AUGER DRIVE ASSEMBLY



# VX-4200 V-Maxx™ G2 HOPPER SPREADER

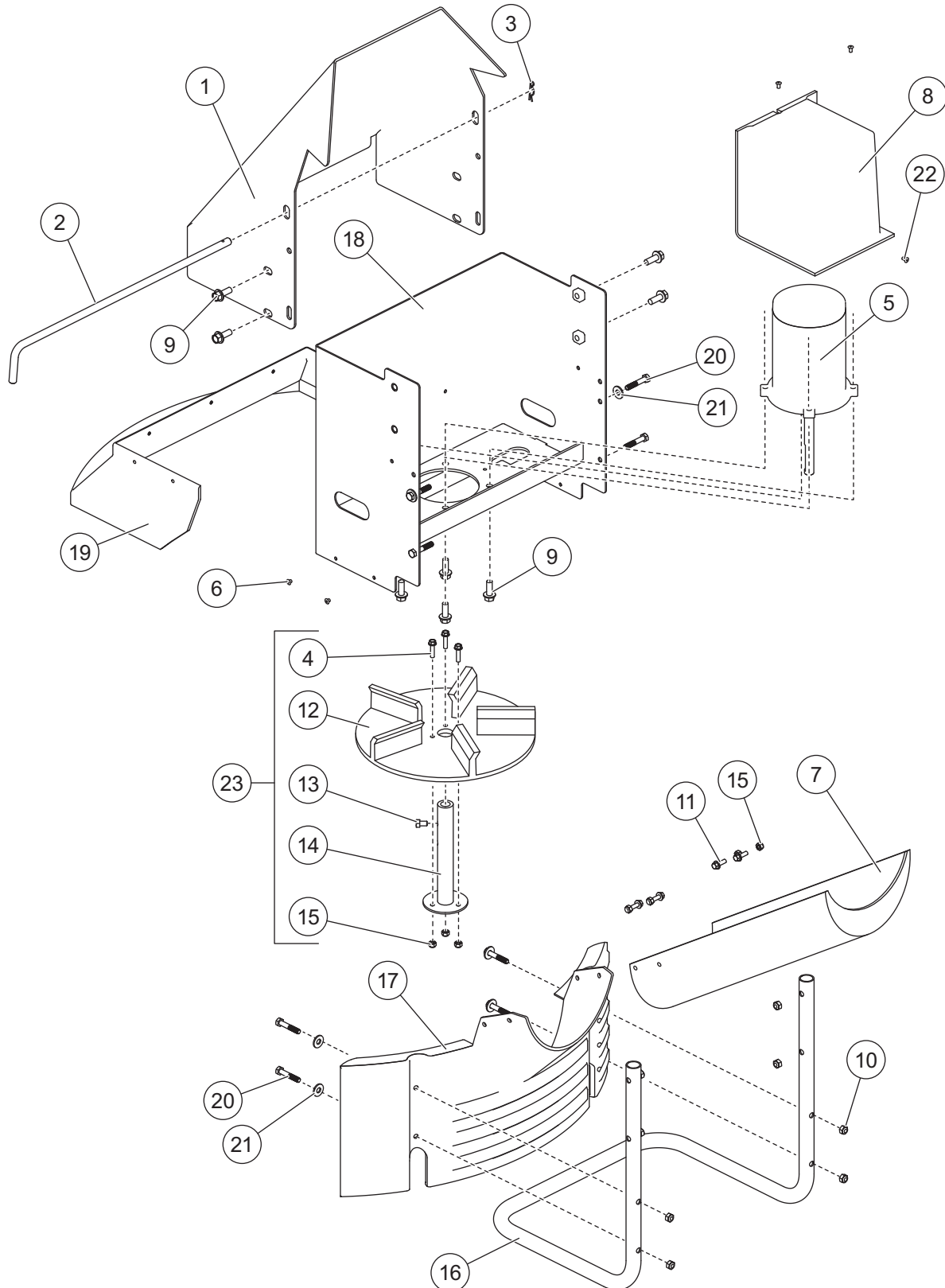
## AUGER DRIVE ASSEMBLY

<b>Auger Drive Assembly</b>							
<b>Item</b>	<b>Part</b>	<b>Qty</b>	<b>Description</b>	<b>Item</b>	<b>Part</b>	<b>Qty</b>	<b>Description</b>
1	D6881	1	Spinner Drive Mount Plate	16	D6868	1	Auger Motor Cover
2	D6814	1	Bearing Cover	17	D6792	1	Auger Shaft Hopper Collar
3	D6528	4	1/2-13 x 1 Serrated Hex Cap Screw	18	D6789	1	Auger Shaft Hopper Washer
4	D6132	2	1/4-20 x 3/4 Hex Cap Screw	19	D7162	1	5/16-18 x 3/4 Set Screw
5	D5535	4	1/2-13 Serrated Flange Nut	20	D6165	4	5/16 Flat Washer
6	D5382	2	Auger Bearing	21	D6138	4	5/16-18 Locknut
7	D6897	1	80" Auger	22	D6752-1	2	Transmission Support Bracket
8	F50513	2	Auger Coupler	23	D5753	8	M8-1.25 x 16 mm Flange Bolt
9	D6452	4	3/8-16 x 1 Serrated Flange Bolt	24	99793	1	Auger Coupler Kit
10	D7163	2	5/16-18 x 1 Coupler Set Screw	25	99794	2	Auger Bearing Kit
11	F50514	1	Urethane Coupler Spider	26	96601	1	Auger Transmission Kit
12	D6873	2	3/16 x 1-1/4 Key Stock	27	D6829	1	Label – Attention, Grease Fitting
13	D6894	1	Auger Transmission	28	F51936	1	3/16 x 1 Key Stock
14	D6872	1	Auger Motor	29	99195	1	Break-Thru Plug
15	D5706	6	5/16-18 Serrated Flange Nut				
<b>Item 24</b>				<b>99793 Auger Coupler Kit</b>			
8	F50513	2	Auger Coupler	12	D6873	1	3/16 x 1-1/4 Key Stock
10	D7163	2	Coupler Set Screw	28	F51936	1	3/16 x 1 Key Stock
11	F50514	1	Urethane Coupler Spider				
<b>Item 25</b>				<b>99794 Auger Bearing Kit</b>			
5	D5535	2	1/2-13 Serrated Flange Nut	6	D5382	1	Auger Bearing
<b>Item 26</b>				<b>96601 Auger Transmission Kit</b>			
12	D6873	2	3/16 x 1-1/4 Key Stock	21	D6138	4	5/16-18 Locknut
13	D6894	1	Auger Transmission	22	D6752-1	2	Transmission Support Bracket
20	D6165	4	5/16 Flat Washer	23	D5753	8	M8-1.25 x 16 mm Flange Bolt

M = Metric

# VX-4200 V-Maxx™ G2 HOPPER SPREADER

## SPINNER DRIVE ASSEMBLY





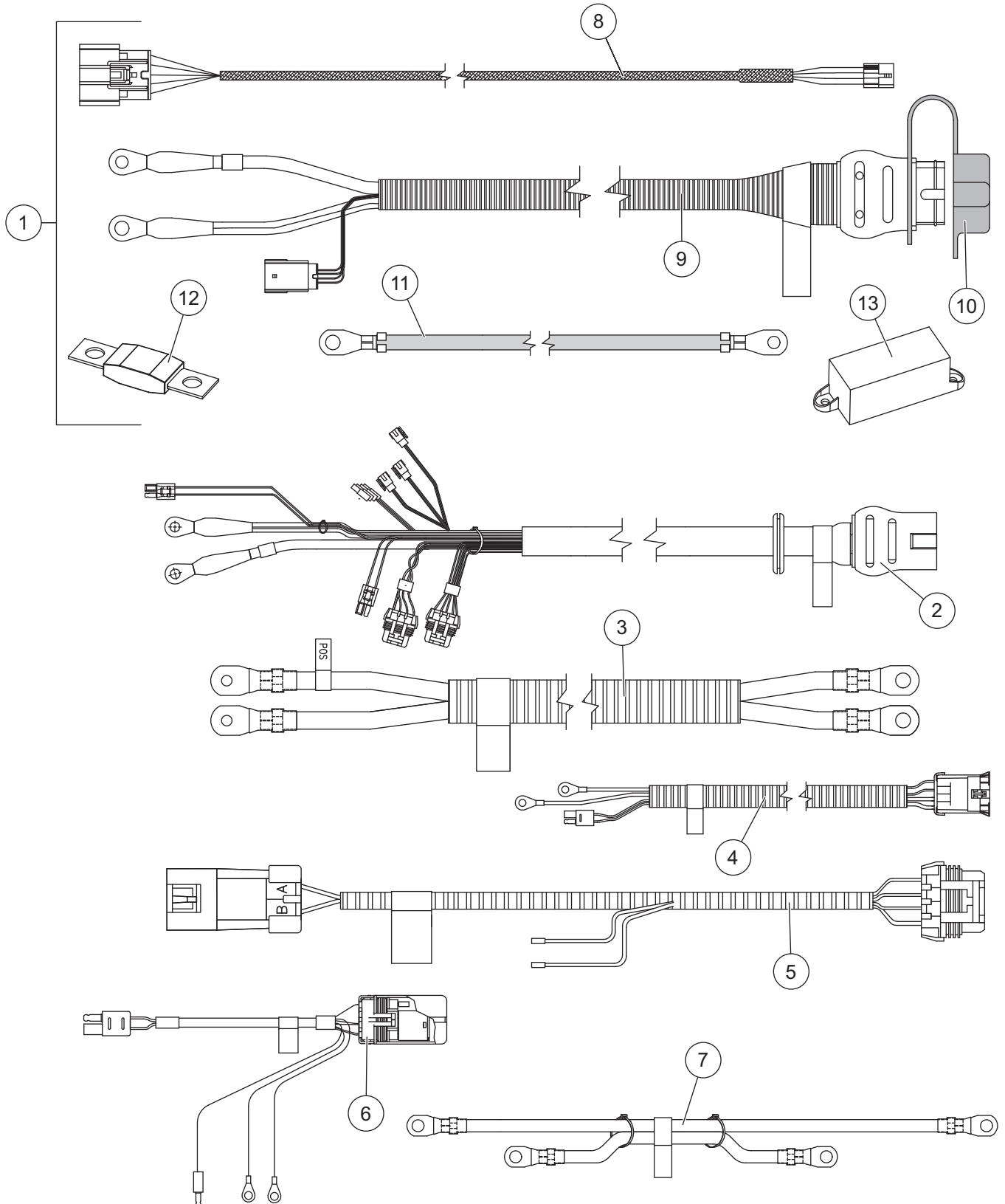
# VX-4200 V-Maxx™ G2 HOPPER SPREADER

## SPINNER DRIVE ASSEMBLY

<b>57254 Spinner Drive Assembly</b>							
Item	Part	Qty	Description	Item	Part	Qty	Description
1	D6817	1	Spinner Shroud	12	D6823	1	5-Flite Urethane Spinner
2	D6563	1	1/2 x 20 Bent Pin	13	T15049	1	5/16-18 x 1/2 Hex Cap Screw
3	D4135	1	.093 x 2-3/8 Hairpin Cotter	14	D6824	1	Spinner Hub
4	D6854	3	1/4-20 x 1 Serrated Hex Washer-Head Cap Screw SS	15	T15016	7	1/4-20 Waxed Locknut SS
5	D6887	1	Direct Drive Spinner Motor	16	D6820	1	Spinner Guard Tube
6	D6130	7	3/16 Long Rivet	17	D6858	1	Material Deflector
7	D6885	1	Material Chute	18	D6867	1	Chute Extension, 10"
8	D6870	1	Spinner Motor Cover	19	D6859	1	Drive Extension Spinner Shield
9	D6452	8	3/8-16 x 1 Serrated Flange Bolt Type F	20	D6462	8	5/16-18 x 1-3/4 Hex Cap Screw
10	D6138	8	5/16-18 Locknut	21	D6165	6	5/16 Flat Washer
11	D6132	4	1/4-20 x 3/4 Serrated Hex Washer-Head Cap Screw SS	22	D6333	4	3/16 x .354 Black Bulbex Rivet
				23	99797	1	Spinner Hub Kit
				ns	83696	1	Spinner Motor Harness
<b>Item 23</b>				<b>99797 Spinner Hub Kit</b>			
4	D6854	3	1/4-20 x 1 Serrated Hex Washer-Head Cap Screw SS	13	T15049	1	5/16-18 x 1/2 Hex Cap Screw
12	D6823	1	5-Flite Urethane Spinner	14	D6824	1	Spinner Hub
				15	T15016	3	1/4-20 Waxed Locknut SS
ns = not shown				SS = Stainless Steel			

# VX-4200 V-Maxx™ G2 HOPPER SPREADER

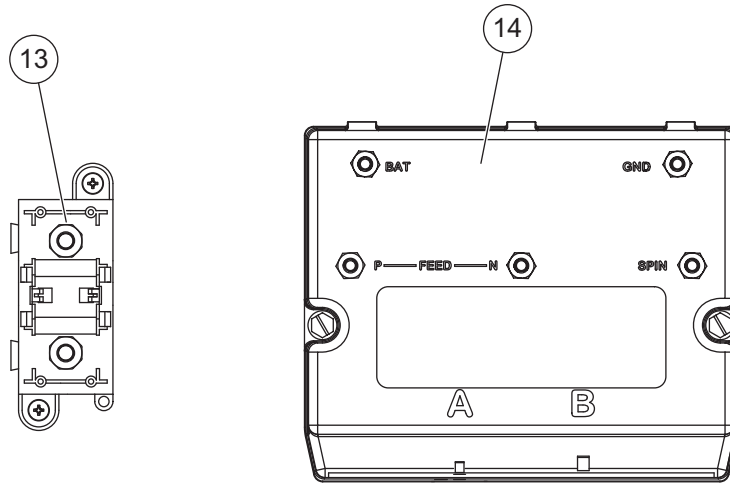
## CONTROL & ELECTRICAL COMPONENTS



Not drawn to scale.

# VX-4200 V-Maxx™ G2 HOPPER SPREADER

## CONTROL & ELECTRICAL COMPONENTS

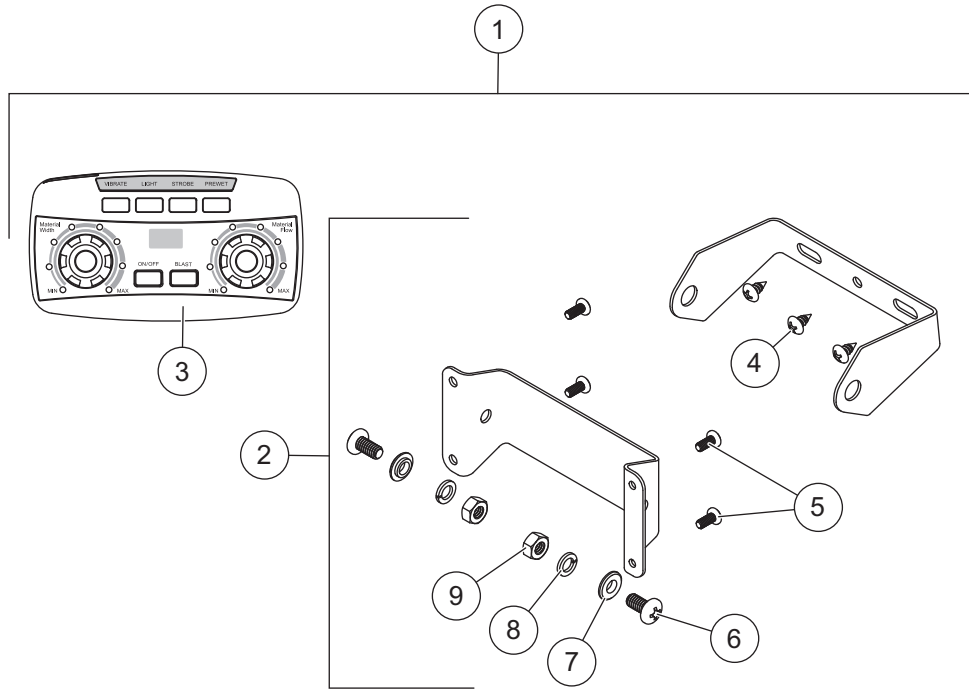


Cables & Harnessing / Electrical Enclosure Assembly							
Item	Part	Qty	Description	Item	Part	Qty	Description
1	78402	1	Vehicle-Side Harness Kit	ns	99775	1	Cable Boot, 8-Pin
2	83688	1	Cable Assembly, Hopper	ns	57116	1	Bracket, Cable Boot
3	83697	1	Cable Assy, Module to Auger Motor	ns	83712	1	Vibrator Extension Harness, 24"
4	78415	1	Cable Assy, Spinner Motor, Hopper	ns	D6514	1	Center High Mount Stop Light (CHMSL)
5	83696	1	Harness, Spinner Chute	ns	D6529*	2	#10-32 x 1-1/4 Machine Screw SS
6	78382	1	Vibrator Harness Assembly	ns	D6158*	2	#10-32 Locknut SS
7	78385	1	Cable Assy, Mod. to Isolated Stud				
<b>Item 1 78402 Vehicle-Side Harness Kit</b>							
8	69902	1	Vehicle Control Harness	12	95836	1	Fuse, 100A
9	76057	1	Vehicle Harness Assy (incl. item 10)	13	95837	2	Fuse Holder/Isolated Stud Block
10	99759	1	Plug Cover	ns		6	Cable Tie, HD
11	22511	1	22" Battery Cable – Red	ns		10	Cable Tie, 15.35"
Electrical Box Components							
13	95837	1	Fuse Holder/Isolated Stud Block	14	52375	1	Spreader Module, 5-Post
ns = not shown				SS = Stainless Steel			

\* CHMSL Mounting Hardware.

# VX-4200 V-Maxx™ G2 HOPPER SPREADER

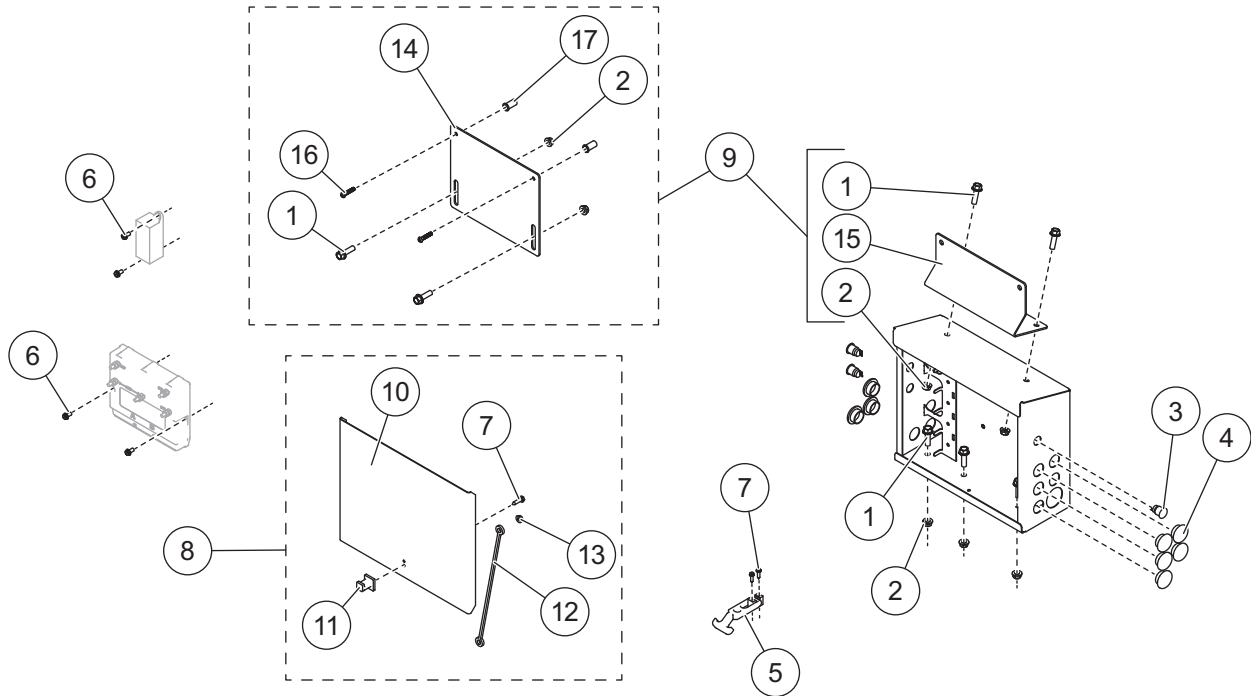
## CONTROL & ELECTRICAL COMPONENTS



Cab Control							
Item	Part	Qty	Description	Item	Part	Qty	Description
1	52430	1	Cab Control Kit	3	52432	1	Cab Control 2-Knob
2	52345	1	Cab Control Bracket Kit				
<b>Item 1</b>				<b>52430 Cab Control Kit</b>			
2	52345	1	Cab Control Bracket Kit	3	52432	1	Cab Control 2-Knob
<b>Item 2</b>				<b>52345 Cab Control Bracket Kit</b>			
		1	Bracket, Control Inner	6		2	1/4-20 x 1/2 Pan-Head Machine Screw SS – Black
		1	Bracket, Control Outer				
4		3	#10 x 3/8 Pan-Head Tapping Screw SS	7		2	1/4 Shoulder Washer SS – Black
5		4	#8 x 3/8 Pan-Head Machine Screw	8		2	1/4 Lock Washer SS
				9		2	1/4-20 Hex Nut G5 – Black
SS = Stainless Steel				G = Grade			

# VX-4200 V-Maxx™ G2 HOPPER SPREADER

## ELECTRICAL BOX ASSEMBLY



99789 Electrical Box Assembly							
Item	Part	Qty	Description	Item	Part	Qty	Description
1	83641	3	3/8-16 x 1-1/4 Serrated Flange Screw G5	7	D6553	2	#10 x 3/4 Hex Washer-Head Slotted Screw
2	D6584	3	3/8-16 Serrated Flange Nut	8	57016	1	Cover Assembly
3	99254	3	Switch, Push Button, MO	9	83702	1	Bracket Kit
4	99195	9	Break-Thru Plug	ns	83698	1	Label Kit – Electronic Assembly
5	D6105	1	Flexible Draw Latch				
6	78436	4	1/4-20 x 1/2 Hex Washer-Head Machine Screw SS				
<b>Item 8 57016 Cover Assembly</b>							
7	D6553	2	#10 x 3/4 Hex Washer-Head Slotted Screw	11	D6198	1	Latch Keeper
10	57014	1	Cover	12	43554	1	12" Lanyard Loop
				13	88300	1	1/4-20 Serrated Flange Nut
<b>Item 9 83702 Bracket Kit</b>							
1	83641	4	3/8-16 x 1-1/4 Serrated Flange Screw G5	15		1	Bottom Support Bracket
2	D6584	4	3/8-16 Serrated Flange Nut	16	57966	2	1/4-20 x 1-1/4 Hex Cap Screw SS
14		1	Top Support Bracket	17	78263	2	1/4-20 Well Nut
SS = Stainless Steel		ns = not shown		G = Grade			



TrynEx International, LLC  
531 Ajax Drive  
Madison Heights, MI 48071-2429  
[www.snowexproducts.com](http://www.snowexproducts.com)

 A DIVISION OF DOUGLAS DYNAMICS, LLC

Copyright © 2018 Douglas Dynamics, LLC. All rights reserved. This material may not be reproduced or copied, in whole or in part, in any printed, mechanical, electronic, film, or other distribution and storage media, without the written consent of TrynEx International, LLC. Authorization to photocopy items for internal or personal use by TrynEx International outlets or spreader owner is granted.

TrynEx International reserves the right under its product improvement policy to change construction or design details and furnish equipment when so altered without reference to illustrations or specifications used. TrynEx International or the vehicle manufacturer may require or recommend optional equipment for spreaders. Do not exceed vehicle ratings with a spreader. TrynEx International offers a limited warranty for all spreaders and accessories. See separately printed page for this important information. The following are registered (®) or unregistered (™) trademarks of Douglas Dynamics, LLC: SnowEx®, V-Maxx™.

**Printed in U.S.A.**