

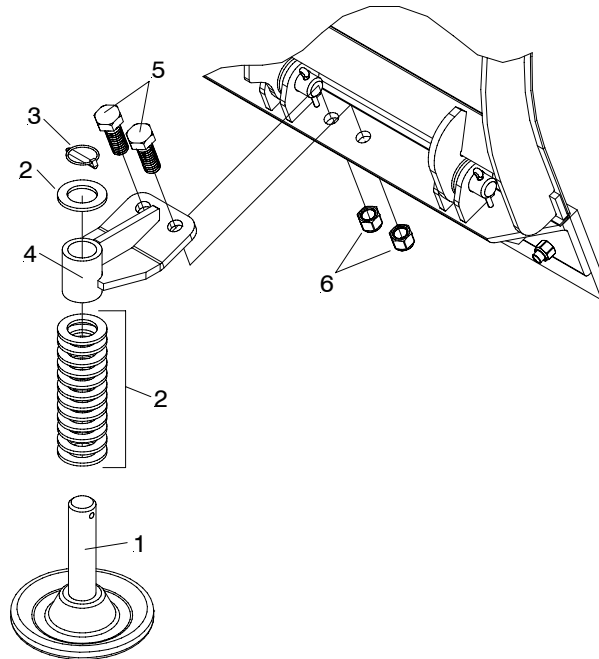
PARTS & INSTALLATION INSTRUCTIONS

MEYER SUPER-V OPTIONAL MUSHROOM RUNNERS

PARTS LIST

Item	Part No.	Qty	Description
	09214	1	Super-V Mushroom Runner Kit
	09330	2	• Runner Shoe Assembly
1	13150	2	•• Mushroom Shoe Casting Assy.
2	20363	13	•• Runner Washer
3	22083	1	•• Linch Pin
4	12545	2	• Runner Bracket Assy.
	08585	1	• Hardware Bag
5	20141	4	•• Bolt H 5/8-11 x 2" Gr. 5
6	20309	4	•• Locknut 5/8-11

Parts indented are included in the carton, bag or assembly under which they are indented.



Installation Instructions

- A.** Place Runner Bracket Assembly (4) on top angle of the tripedge weldment and align with the two holes already drilled as shown above.
- B.** Fasten Runner Bracket Assembly (4) to the angle using Bolt H 5/8-11 x 2" (5) and 5/8-11 Locknut (6).
- C.** Slide the twelve Runner Washers (2) over Mushroom Shoe Casting (1).
- D.** Slide Mushroom Shoe Casting (1) thru bottom of Runner Bracket Assembly (4) then slide one Runner Washer (2) over Mushroom Shoe Casting (1) and attach Linch Pin (3) to Mushroom Shoe Casting (1).

CUTTING EDGE SHOULD BE APPROXIMATELY 1/4" OFF THE GROUND

Meyer Products and Diamond Equipment reserves the right, under its continuing product improvement program, to change construction or design details, specifications and prices without notice or without incurring any obligation.

Meyer Products Inc.
18513 Euclid Ave. • Cleveland, Ohio 44112-1084
Phone 486-1313 (Area Code 216)
www.meyerproducts.com • email info@meyerproducts.com



Meyer New England
6 Angell Lane • Damariscotta, ME 04543-4507
Phone 563-2227 (Area Code 207)
www.diamondplow.com • email info@diamondplow.com