

Safety

- Always follow the vehicle manufacturer's recommendations relating to system installation. For recommended vehicle models, refer to the *BOSS Snowplow Application Chart and Selection Guide*.
- Never disable, remove, or relocate any sensors or other components related to the operation of the air bags.
- To comply with federal regulations and to assure a safe vehicle, do not exceed the front gross-axle-weight rating (FGAWR), rear gross-axle-weight rating (RGAWR), and the gross-vehicle-weight rating (GVWR) at any time.
- Due to the variety of equipment that you can install on the vehicle and undercarriage, do not exceed the front gross-axle-weight rating (FGAWR), rear gross-axle-weight rating (RGAWR), and the gross-vehicle-weight rating (GVWR) at any time. This may require weighing the vehicle and adding ballast as necessary. It may also limit the payload capacity of the vehicle.

Installation

1. Park the vehicle on a level surface, engage the parking brake, shut off the engine, and remove the key.
2. Remove the bumper and tow hooks from the vehicle.

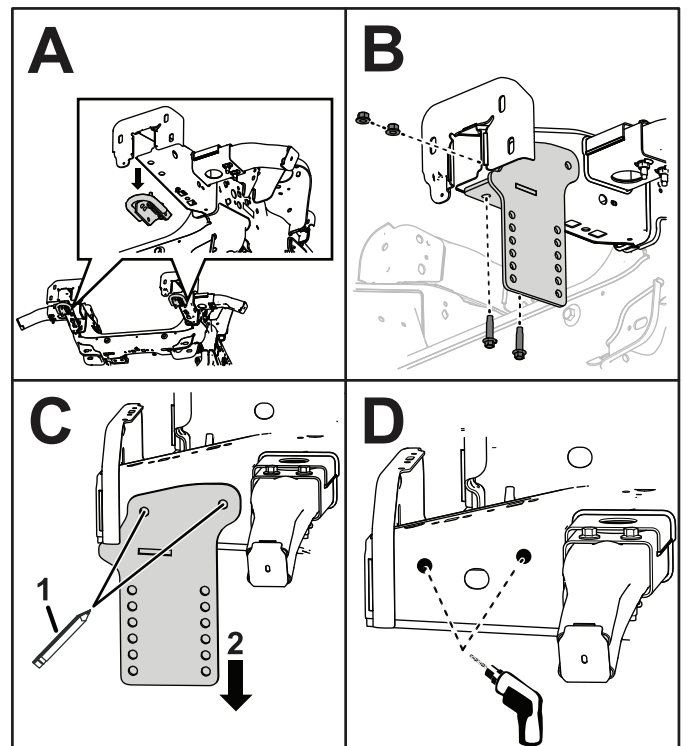


Figure 1

g349298

3. Align the bottom holes of the support plates with the tow hook holes under the end of the vehicle frame rails.
4. Use the existing bolts from the tow hooks to attach the driver-side support plate, passenger-side support plate, and tow hooks to the frame.
5. Mark the holes on the outside of the frame rails and remove the support plates.

⚠ WARNING

Using a drill without proper eye protection may allow debris to enter the eye, causing injury.

When drilling, always wear eye protection.

6. Locate your marks and drill 2 holes (1.43 cm or 9/16 inch) on each frame rail.
7. Remove the skid plate from the vehicle crossmember under the truck.
8. Align the skid plate attachment with the existing holes (1/4 inch) in the crossmember.
9. Use a drill to widen the existing holes (1/4 inch) to 1/2 inch.

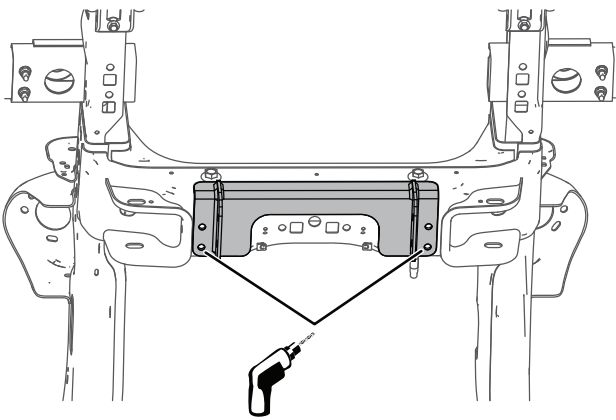


Figure 2

g349312

10. Use bolt pullers to secure the 4 hex-head bolts (1/2 inch), flat washers (1/2 inch), lock washers and top locknuts (1/2 inch) to the skid plate and crossmember.

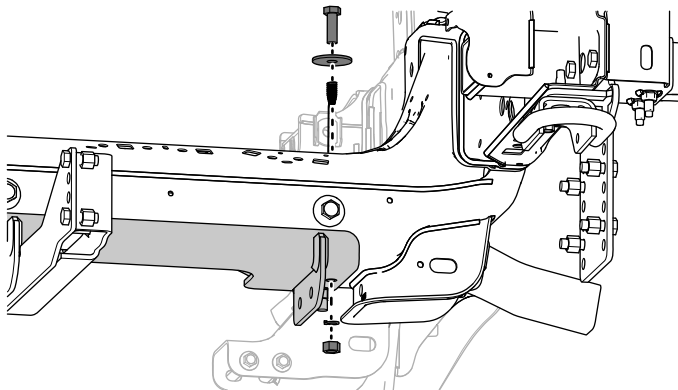


Figure 3

g349091

11. Use 4 hex-head bolts (1/2 inch, GR8) and 4 nylon locknuts (1/2 inch) to loosely secure the angle brackets to the skid plate attachment (Figure 4).

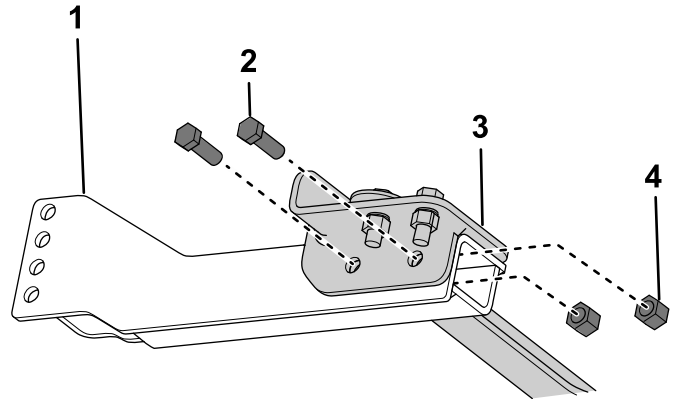


Figure 4

g348036

1. Angle bracket—driver side
2. Hex-head bolt (1/2 inch, GR5)
3. Skid plate attachment
4. Nylon locknut (1/2 inch)

12. Use 4 hex-head bolts (1/2 inch, GR5) and 4 nylon locknuts (1/2 inch) to loosely secure the support plates to the vehicle frame.

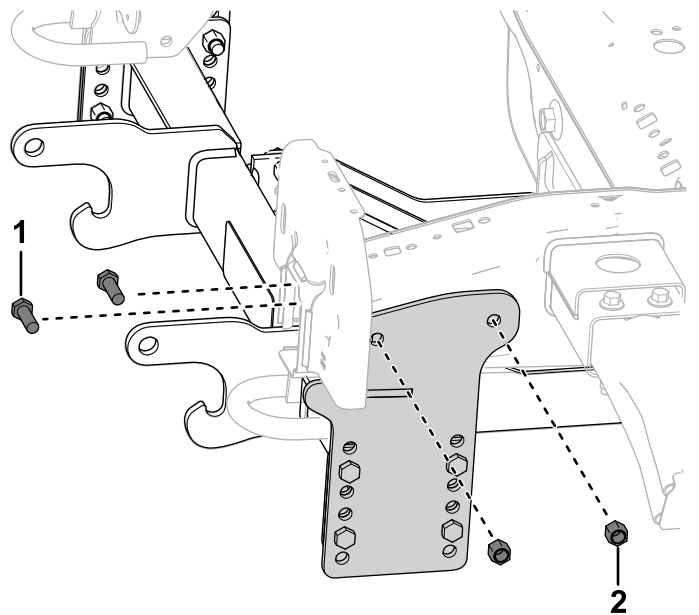


Figure 5

g348879

1. Hex-head bolt (1/2 inch, GR5)
2. Nylon locknut (1/2 inch)

13. Install the tow hooks.

- Use 8 hex-head bolts (1/2 inch, GR5) and 8 nylon locknuts (1/2 inch) to loosely secure the push beam assembly to the support plates.

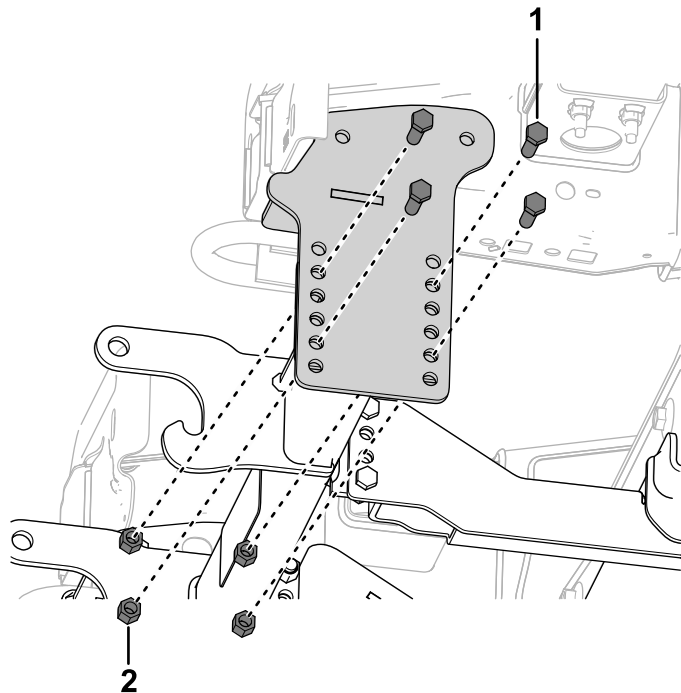


Figure 6

g348878

- Hex-head bolt (1/2 inch, GR5)
- Nylon locknut (1/2 inch)

- Use 4 hex-head bolts (1/2 inch, GR5) and 4 nylon locknuts (1/2 inch) to loosely secure the angle brackets to the tabs on the back of the push beam assembly (Figure 7).

Note: Refer to the Recommended Pushbeam Height table below

Recommended Pushbeam Height

Plow Type	Recommended Pushbeam Height
Rear Mounted Plow	48 cm (19 inches)
UTV	44-1/2 cm (17-1/2 inches)
Heavy Duty	15 cm (16-1/2 inches)
Standard Duty	39 cm (15-1/2 inches)
HTX/Sport Duty	37 cm (14-1/2 inches)

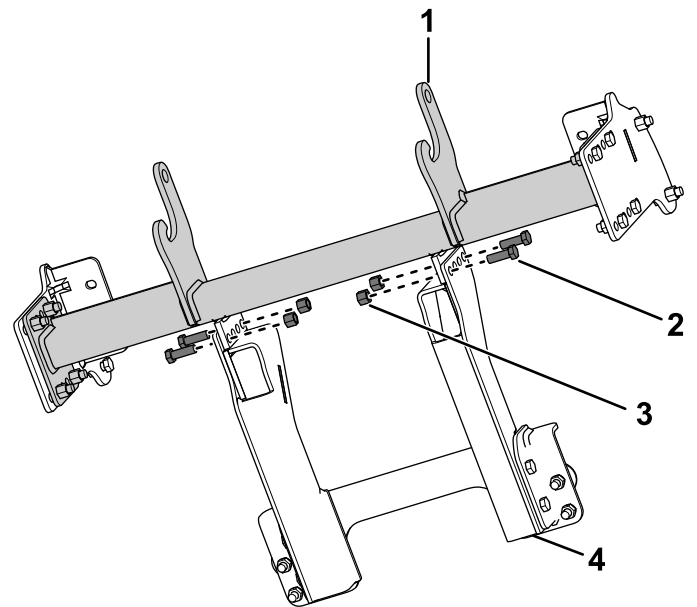


Figure 7

g348035

- Push beam assembly
- Hex-head bolts (1/2 inch, GR5)
- Nylon locknuts (1/2 inch)
- Angle bracket—driver side GR8)

- Measure and notch the vehicle valance, or remove the valance if desired.
- Remove the active air dam valance and motors (if equipped) from the backside of the bumper. Apply dielectric grease to the electrical connectors and secure them to the bumper.

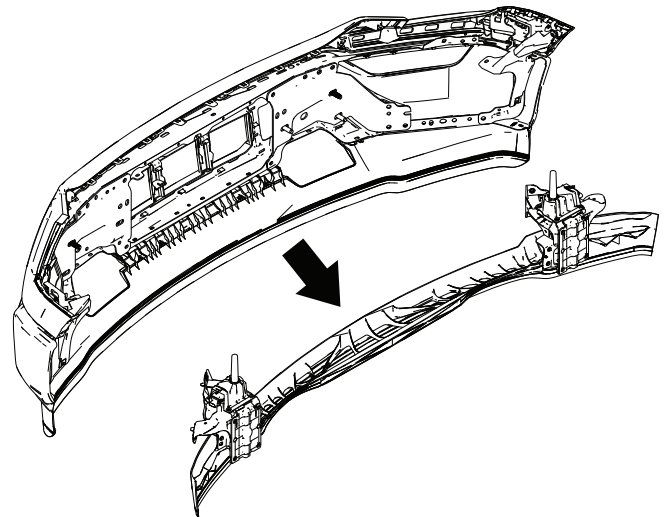
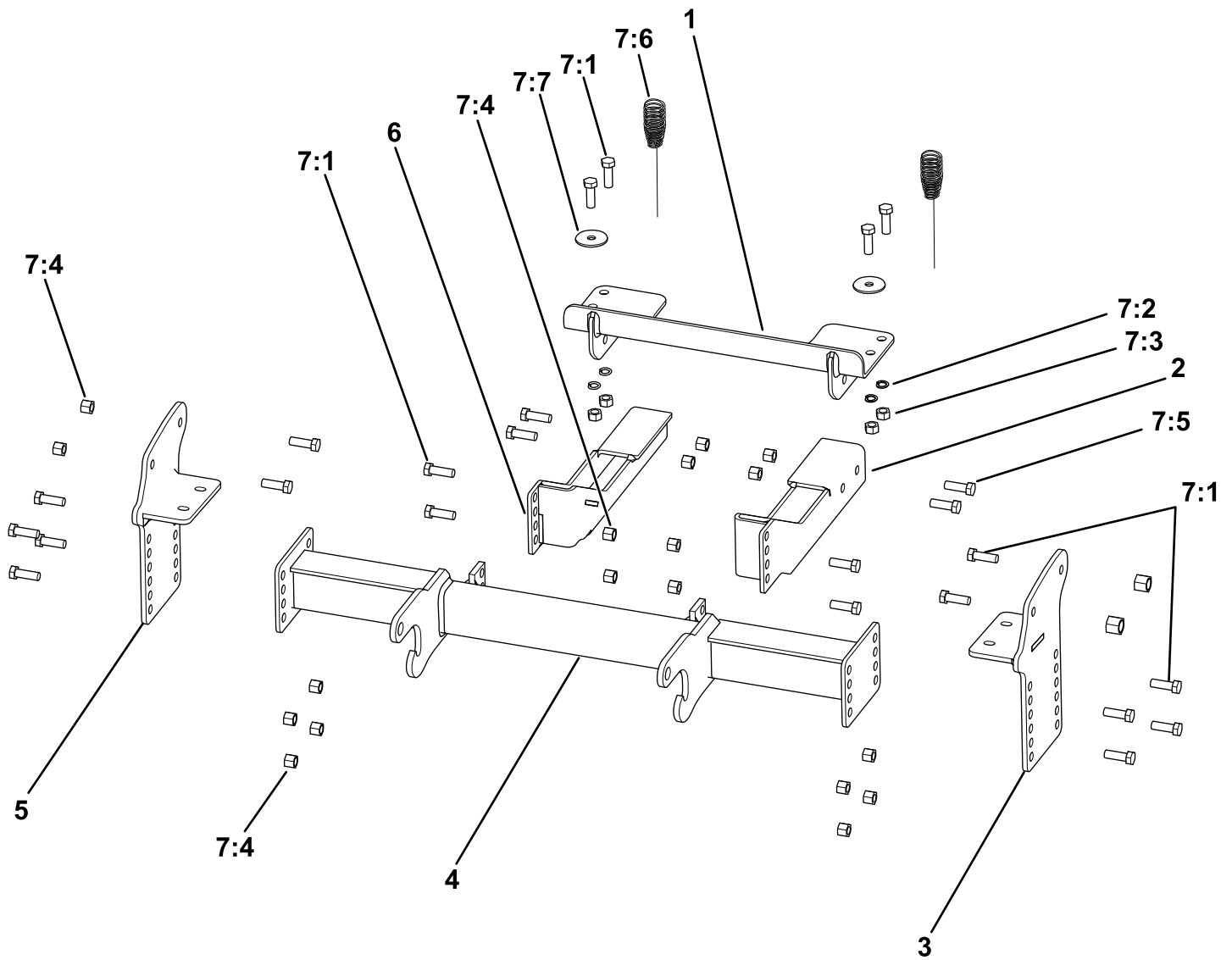


Figure 8

g357207

- Install the bumper to the vehicle.
- Torque all of the fasteners to the following specifications:
 - 1/2-inch bolts: torque to 76 N·m (56 ft-lb)
 - M12 bolts: torque to 80 to 100 N·m (59 to 73 ft-lb).



g348061

Parts

Ref.	Part Number	Qty.	Description	Ref.	Part Number	Qty.	Description
1	LTA10122-03	1	SKID PLT,FORD F150,21+	7:1	HDW01728	20	HHCS, 1/2-13 X 1-1/2, NC, GR5, YZN
2	LTA10123-03	1	ARM,ANGLE BRKT,DR,FORD F150,21+	7:2	HDW01732	4	WASHER, 1/2, SPLIT LOCK, YZN
3	PBA10125-03	1	PBSP,DR,FORD F150,21+	7:3	HDW02410	4	NUT, 1/2-13, FIN, FULL, YZN
4	PBA09166-03	1	PUSHBEAM ASM RT3 SP/FORD F150,09+[WELD]	7:4	HDW01748	20	NUT, 1/2-13, NYL INS, YZN
5	PBA10130-03	1	PBPS,PS,FORD F150,21+	7:5	HDW05553	4	HHCS, 1/2-13 X 1-1/2, NC, GR8, YZN
6	LTA10124-03	1	ARM,ANGLE BRKT,PS,FORD F150,21+	7:6	MSC09670	2	BOLT PULLER, 1/2-13
7	HDW10175	1	FASTENER KIT, FORD F150, 21+	7:7	HDW10982	2	WASHER,FENDER,1/2"IDX2"OD